

F.A.P. RTE.	SECTION	COUNTY	TOTAL SHEETS	SHEET NO.
353	23N-2	COOK	75	1
ILLINOIS			CONTRACT NO. 60T19	

STATE OF ILLINOIS
DEPARTMENT OF TRANSPORTATION
DIVISION OF HIGHWAYS

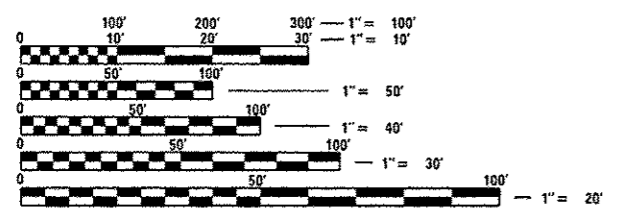
**PROPOSED
HIGHWAY PLANS**

F.A.P ROUTE 353: U.S. ROUTE 30 (LINCOLN HIGHWAY)
SECTION 23N-2
AT WESTERN AVENUE
INTERSECTION IMPROVEMENT
PROJECT: ACHSIP-0353(023)
COOK COUNTY
C-91-307-12

FOR INDEX OF SHEETS, SEE SHEET NO. 2

PROJECT LOCATED IN THE
VILLAGE OF OLYMPIA FIELDS AND
CITY OF CHICAGO HEIGHTS

TRAFFIC DATA
2012 ADT
U.S. RTE 30 = 28,900
WESTERN AVENUE = 16,800
SPEED LIMIT = (U.S. RTE 30) = 35 MPH
(WESTERN AVENUE) = 35 MPH

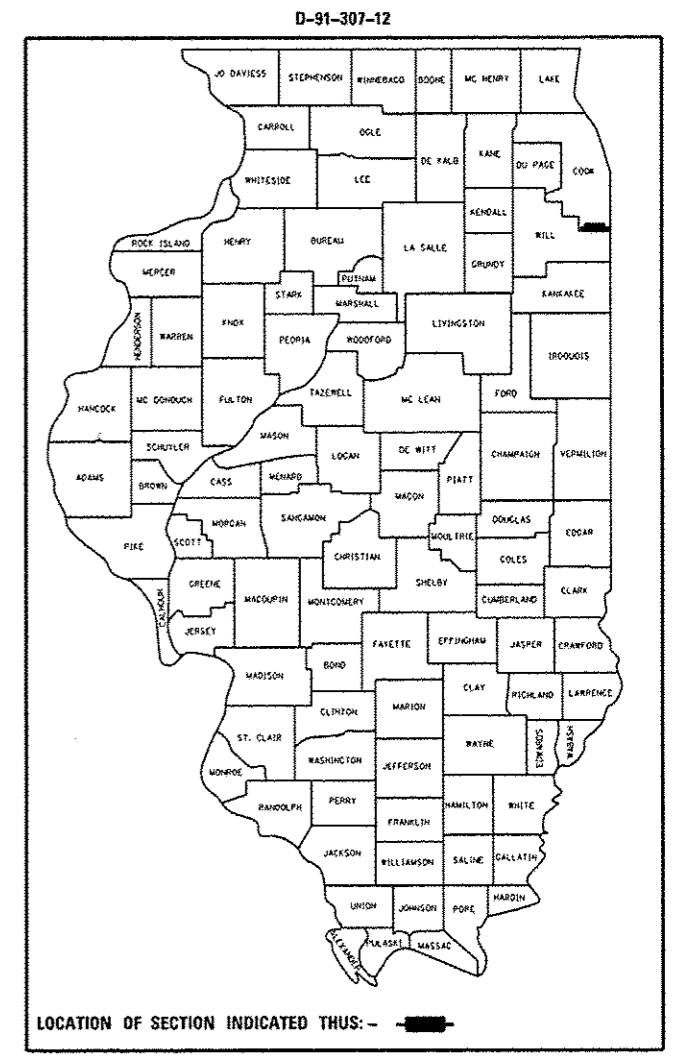
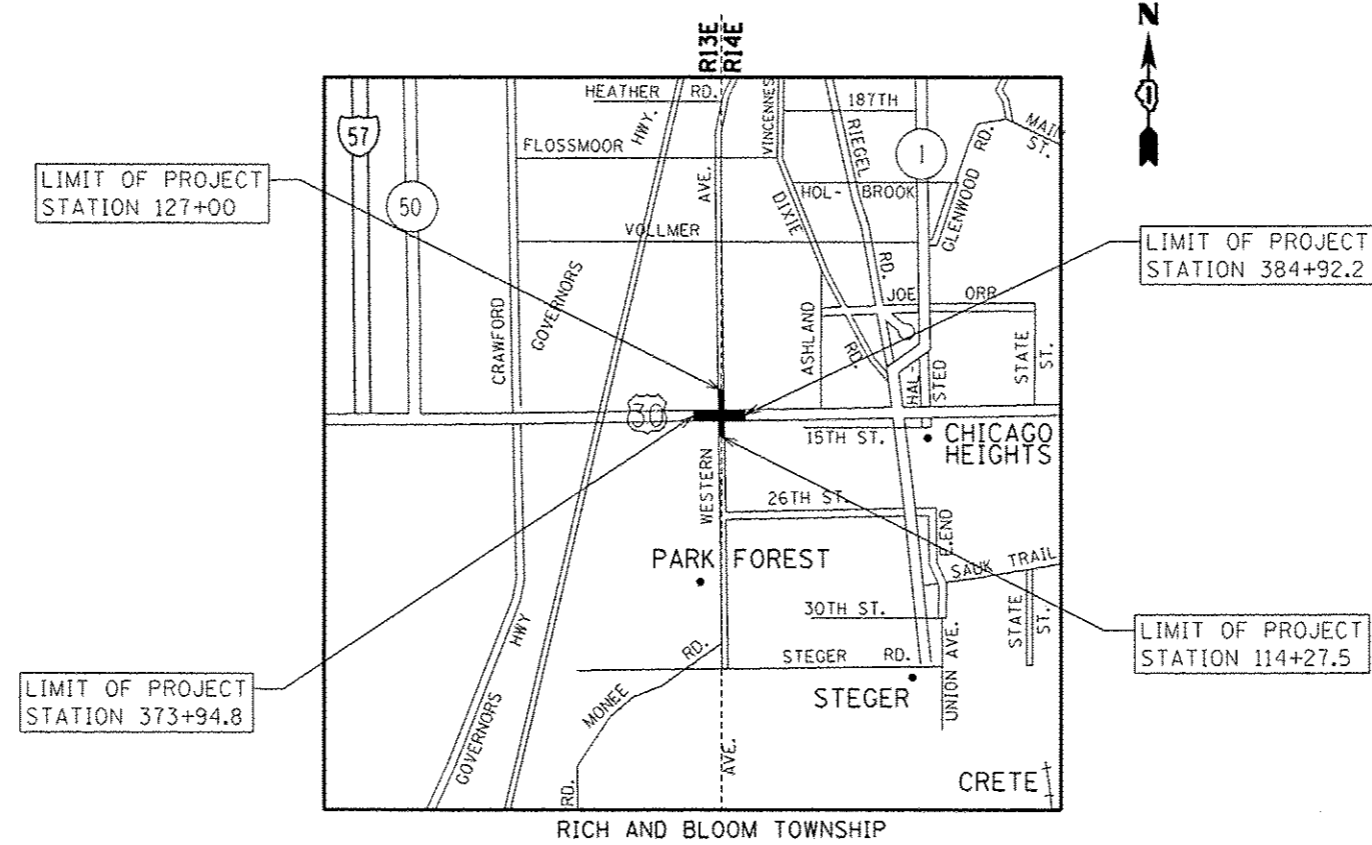


FULL SIZE PLANS HAVE BEEN PREPARED USING STANDARD ENGINEERING SCALES. REDUCED SIZED PLANS WILL NOT CONFORM TO STANDARD SCALES. IN MAKING MEASUREMENTS ON REDUCED PLANS, THE ABOVE SCALES MAY BE USED.

J.U.L.I.E.
JOINT UTILITY LOCATION INFORMATION FOR EXCAVATION
1-800-892-0123
OR 811

PROJECT ENGINEER KARI SMITH (847) 705-4437
PROJECT MANAGER KEN ENG (847) 705-4247

CONTRACT NO. 60T19



STATE OF ILLINOIS
DEPARTMENT OF TRANSPORTATION
DIVISION OF HIGHWAYS
SUBMITTED *October 15 2013*
John F. ...
DEPUTY DIRECTOR OF HIGHWAYS, REGION ENGINEER
Dec 6 2013
John D. Baranzelli PE
ENGINEER OF DESIGN AND ENVIRONMENT
Dec 6 2013
Omair Osman PE
DIRECTOR OF HIGHWAYS, CHIEF ENGINEER

**PRINTED BY THE AUTHORITY
OF THE STATE OF ILLINOIS**

GROSS LENGTH OF PROJECT (U.S. RTE 30) = 1,097.4 FT = 0.21 MILE
GROSS LENGTH OF PROJECT (WESTERN AVE.) = 1,147.8 FT = 0.22 MILE
NET LENGTH OF PROJECT = 2,245.2 FT = 0.43 MILE