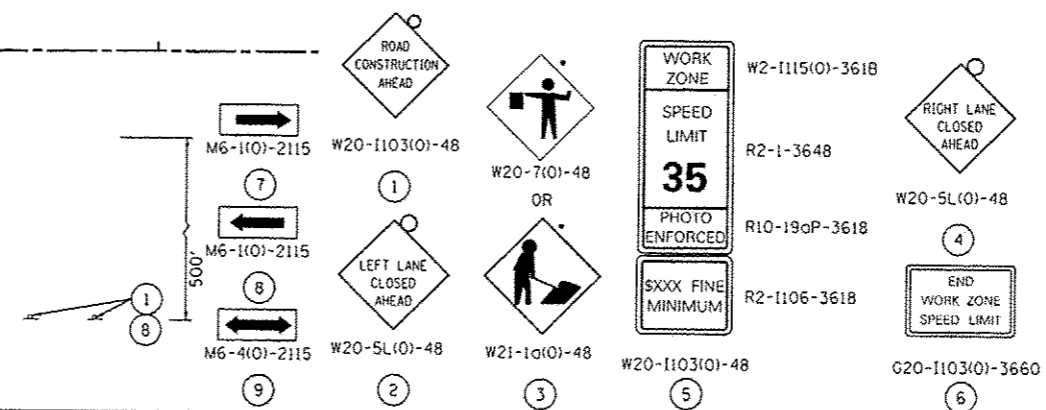


NOTES:

1. FOR ADDITIONAL TRAFFIC CONTROL AND SIGN DETAILS SEE HIGHWAY STANDARDS 701601, 701701 AND DISTRICT ONE STANDARD TC14.
 2. EXISTING TRAFFIC SIGNALS AT IL 64/VILLA AVE, AND AT IL 64/SHOPPING CENTER TO REMAIN IN OPERATION.
 3. ALL WB LEFT TURNING VEHICLES ONTO SB VILLA AVE WILL BE DETOURED. SEE SHEET 20.
 4. TEMPORARY RAISED REFLECTIVE PAVEMENT MARKERS WILL BE INSTALLED ALONG ALL TEMPORARY PAVEMENT MARKINGS IN ACCORDANCE WITH DISTRICT ONE DETAIL TC11.
- * MUST BE REMOVED WHEN FLAGGER OR WORKERS ARE NOT PRESENT FOR MORE THAN ONE HOUR

LEGEND:

- WORK AREA
- TYPE II BARRICADES OR DRUMS WITH STEADY BURN MONODIRECTIONAL LIGHT (SPACED 50' C-C OR AS NOTED BELOW) DEVICES IN TAPER (25' C-C) DEVICES IN RADII (10' C-C)
- DIRECTION OF TRAFFIC FLOW
- SIGN
- ARROW BOARD
- IMPACT ATTENUATOR
- TEMPORARY PAVEMENT
- DIRECTION INDICATOR BARRICADE WITH STEADY BURN MONODIRECTIONAL LIGHT (SPACED 25' C-C)



FILE NAME = I:\7290\729018 - IL 64 Over Salt Creek\A000\Cadd Sheets\1181824-10-13.dwg

COLLINS ENGINEERS
110 N. 90th St.
Chicago, IL 60648
Tel: (312) 991-9300
Fax: (312) 991-4310
www.collinseng.com

USER NAME = rgall	DESIGNED -	REVISION 12/20/2013 R.A.G.
PLOT SCALE = 100.0000' / in.	DRAWN -	REVISION -
PLOT DATE = 12/20/2013	CHECKED -	REVISION -
	DATE -	REVISION -

STATE OF ILLINOIS
DEPARTMENT OF TRANSPORTATION

ILLINOIS ROUTE 64 (NORTH AVE) OVER SALT CREEK
MAINTENANCE OF TRAFFIC - STAGE 3A

F.A.P. RTE.	SECTION	COUNTY	TOTAL SHEETS	SHEET NO.
307	1318-BR	DUPAGE	111	30
CONTRACT NO. 60V24			ILLINOIS FED. AID PROJECT	

SCALE: SHEET OF SHEETS STA. TO STA.