

**BENCHMARKS**

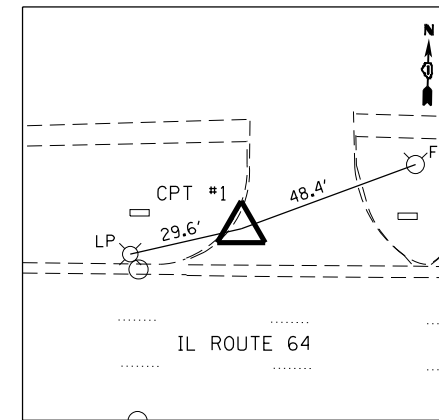
BM NO. 1  
P.K. IN CENTER MEDIAN  
STA. 103+45.79  
ELEV. 672.16

**ALIGNMENT COORDINATES**

POINT	STATION	NORTHING	EASTING
<b>IL ROUTE 64</b>			
ALN1	91+16.86	1,908,405.4771	1,082,789.2674
ALN2	98+03.42	1,098,426.0343	1,083,475.5184
ALN3	110+92.35	1,908,470.7165	1,084,763.6742
<b>VILLA AVE. (NORTH)</b>			
VILLA1	10+00.00	1,908,425.7440	1,083,465.8271
VILLA2	14+00.74	1,908,809.2852	1,083,349.6951
<b>VILLA AVE. (SOUTH)</b>			
VILLA4	5+92.57	1,908,018.7617	1,083,464.3912
VILLA3	10+00.00	1,908,426.0354	1,083,475.5494

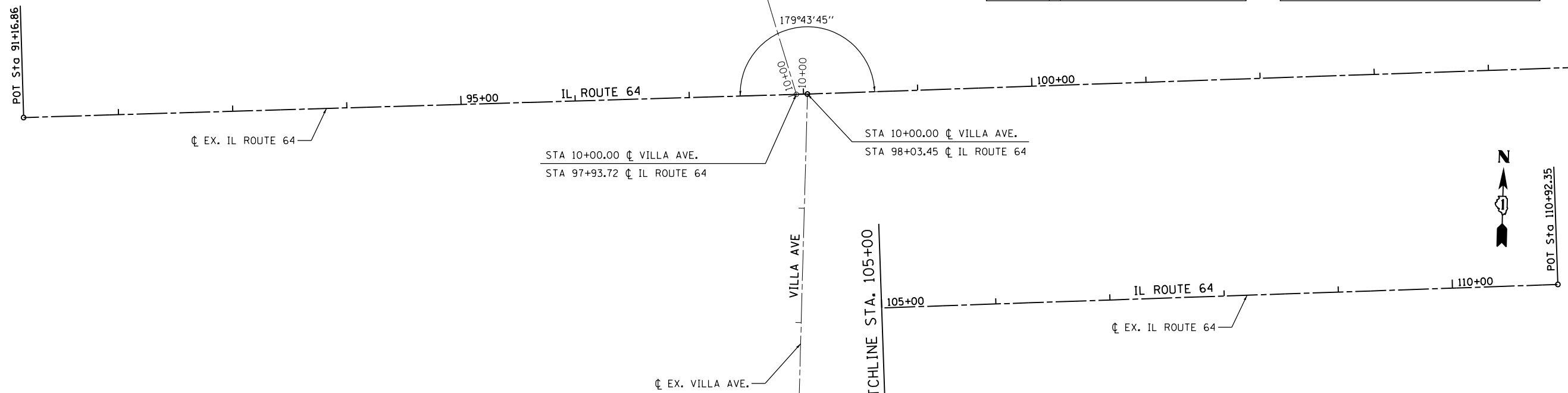
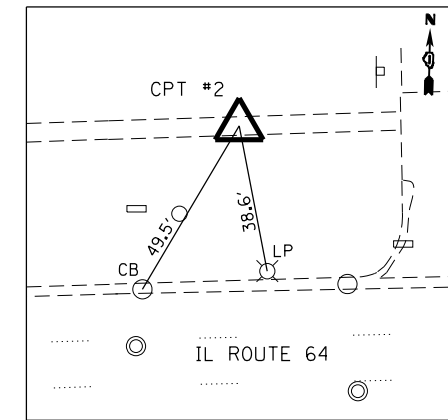
**CONTROL POINT #1**

P.K. IN ASPHALT ENTRANCE  
STA 91+17.44, 63.15' LT  
N 10908468.6211  
E 1082787.9599  
ELEV. 681.13



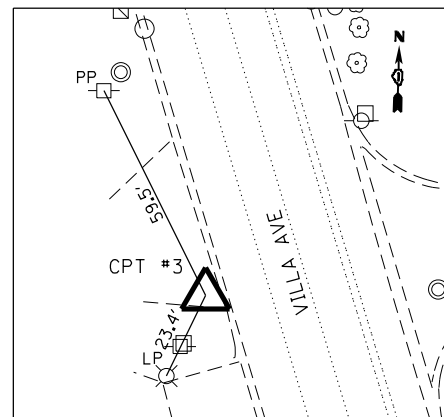
**CONTROL POINT #2**

"X" CUT SET IN CONCRETE  
STA 95+34.28, 88.56' LT  
N 1908506.4933  
E 1083203.8546  
ELEV. 681.10



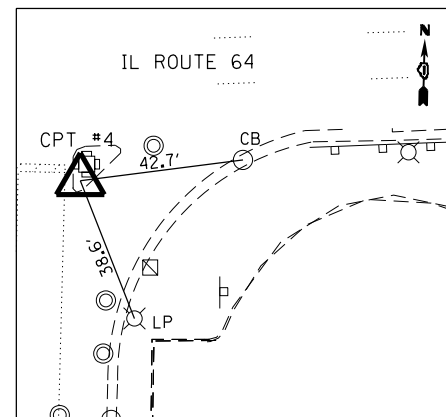
**CONTROL POINT #3**

P.K. SET IN ASPHALT ENTRANCE  
STA 12+65.21 (VILLA AVE), 26.53' RT  
N 1908671.8873  
E 1083363.5753  
ELEV. 675.95



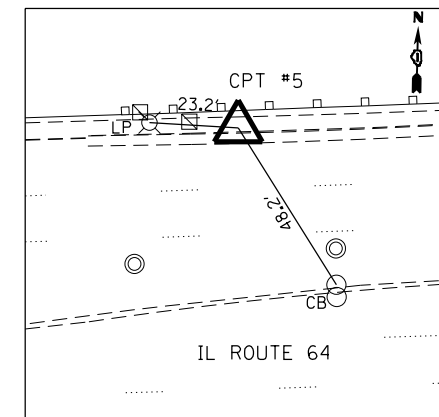
**CONTROL POINT #4**

"X" CUT SET IN ISLAND  
STA 98+21.81, 54.55' RT  
N 1908372.1523  
E 1083495.7963  
ELEV. 678.29



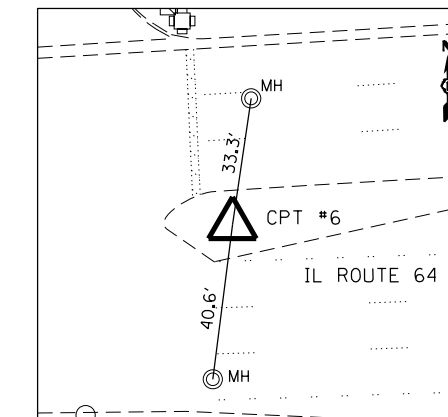
**CONTROL POINT #5**

"X" CUT IN CONCRETE SIDEWALK  
STA 101+16.22, 47.75' LT  
N 1908484.5998  
E 1083786.4755  
ELEV. 673.41



**CONTROL POINT #6**

P.K. SET IN ASPHALT MEDIAN  
STA 103+45.46, 1.61' LT  
N 1084017.1763  
E 1908446.4317  
ELEV. 672.16



FILE NAME = I:\7290\729018 - IL 64 Over Salt Creek\CADD\Cadd Sheets\PI39308-sh1-ATB.dgn

**COLLINS ENGINEERS**  
123 N. Wacker Dr.  
Suite 300  
Chicago, IL 60606  
Tel: (312) 704-9300  
Fax: (312) 704-9330  
www.collinseng.com  
ILLINOIS PROFESSIONAL DESIGN FIRM LICENSE NO. 084-1000993

USER NAME = rge11	DESIGNED -	REVISD -
PLOT SCALE = 100.0000' / 1" =	DRAWN -	REVISD -
PLOT DATE = 10/24/2013	CHECKED -	REVISD -
	DATE -	REVISD -

**STATE OF ILLINOIS  
DEPARTMENT OF TRANSPORTATION**

**ILLINOIS ROUTE 64 (NORTH AVE) OVER SALT CREEK  
ALIGNMENT, TIES, AND BENCHMARKS**

SCALE: SHEET OF SHEETS STA. TO STA.

F.A.P. R.E.	SECTION	COUNTY	TOTAL SHEETS	SHEET NO.
307	1318-BR	DuPAGE	111	18
CONTRACT NO. 60V24				
ILLINOIS FED. AID PROJECT				