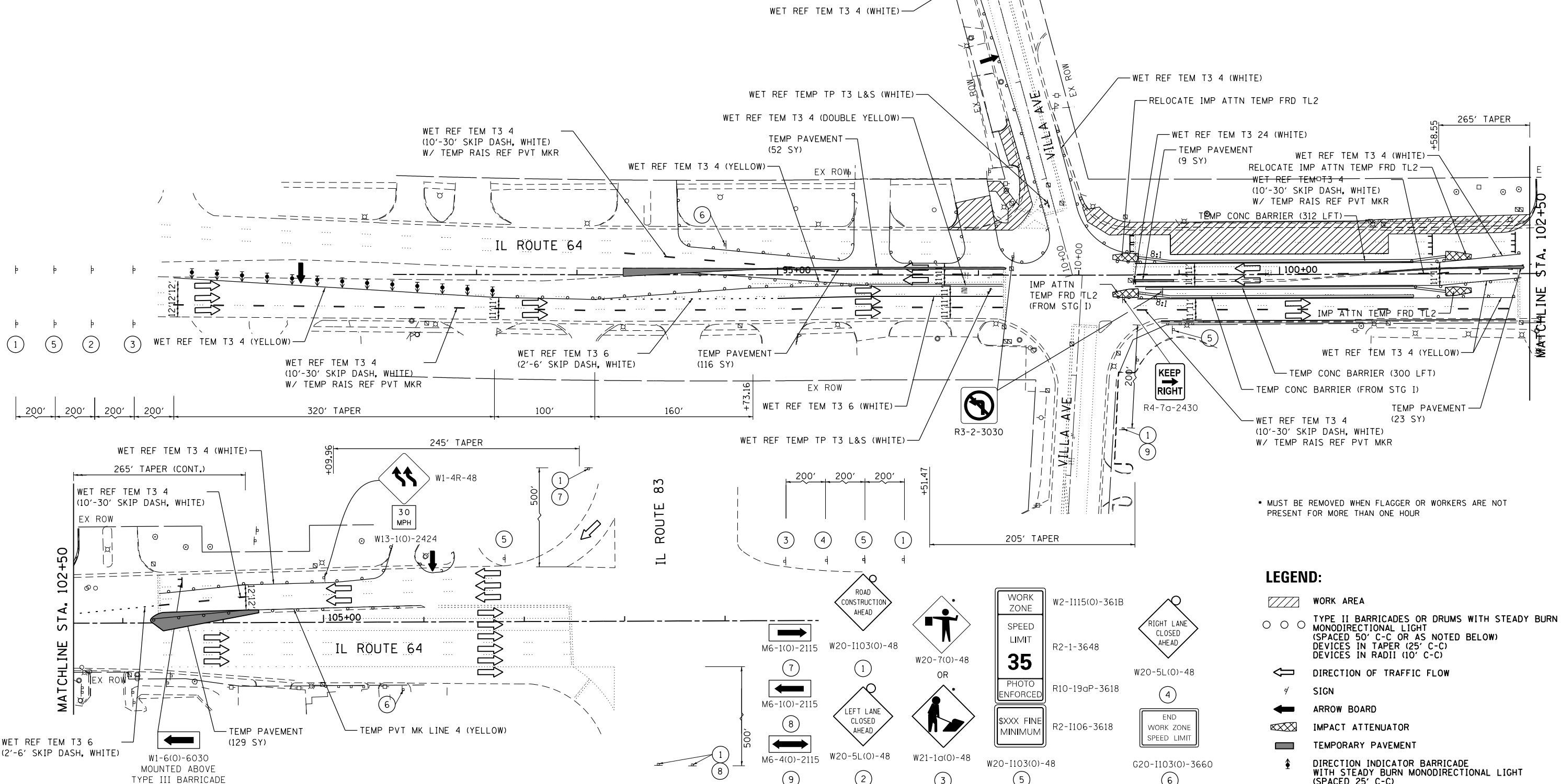


**TEMPORARY PAVEMENT TYPICAL SECTION**

**NOTES:**

1. FOR ADDITIONAL TRAFFIC CONTROL AND SIGN DETAILS SEE HIGHWAY STANDARDS 701601, 701701 AND DISTRICT ONE STANDARD TC14.
2. SEE TEMPORARY TRAFFIC SIGNAL PLANS FOR MODIFICATIONS AT IL 64/VILLA AVE AND IL 64/SHOPPING CENTER.
3. ALL WB LEFT TURNING VEHICLES ONTO SB VILLA AVE WILL BE DETOURED. SEE SHEET 20.
4. TEMPORARY RAISED REFLECTIVE PAVEMENT MARKERS WILL BE INSTALLED ALONG ALL TEMPORARY PAVEMENT MARKINGS IN ACCORDANCE WITH DISTRICT ONE DETAIL TC11.



\* MUST BE REMOVED WHEN FLAGGER OR WORKERS ARE NOT PRESENT FOR MORE THAN ONE HOUR

**LEGEND:**

- WORK AREA
- TYPE II BARRICADES OR DRUMS WITH STEADY BURN MONODIRECTIONAL LIGHT (SPACED 50' C-C OR AS NOTED BELOW) DEVICES IN TAPER (25' C-C) DEVICES IN RADII (10' C-C)
- DIRECTION OF TRAFFIC FLOW
- SIGN
- ARROW BOARD
- IMPACT ATTENUATOR
- TEMPORARY PAVEMENT
- DIRECTION INDICATOR BARRICADE WITH STEADY BURN MONODIRECTIONAL LIGHT (SPACED 25' C-C)

FILE NAME = I:\7290\729018 - IL 64 Over Salt Creek\CAADD\Cadd Sheets\PI39308-ah1-staging.dgn

**COLLINS ENGINEERS**  
 123 N. Wacker Dr.  
 Suite 300  
 Chicago, IL 60606  
 Phone: (312) 704-9300  
 Fax: (312) 704-9330  
 www.collinseng.com  
 ILLINOIS PROFESSIONAL DESIGN FIRM LICENSE NO. 084-000993

USER NAME = r9e11	DESIGNED -	REVISED -
PLOT SCALE = 100.0000' / 1"	DRAWN -	REVISED -
PLOT DATE = 10/24/2013	CHECKED -	REVISED -
	DATE -	REVISED -

**STATE OF ILLINOIS  
 DEPARTMENT OF TRANSPORTATION**

<b>ILLINOIS ROUTE 64 (NORTH AVE) OVER SALT CREEK    MAINTENANCE OF TRAFFIC - STAGE 2</b>	
SCALE:	SHEET OF SHEETS STA. TO STA.

F.A.P. RTE.	SECTION	COUNTY	TOTAL SHEETS	SHEET NO.
307	1318-BR	DuPAGE	111	26
CONTRACT NO. 60V24				
ILLINOIS FED. AID PROJECT				