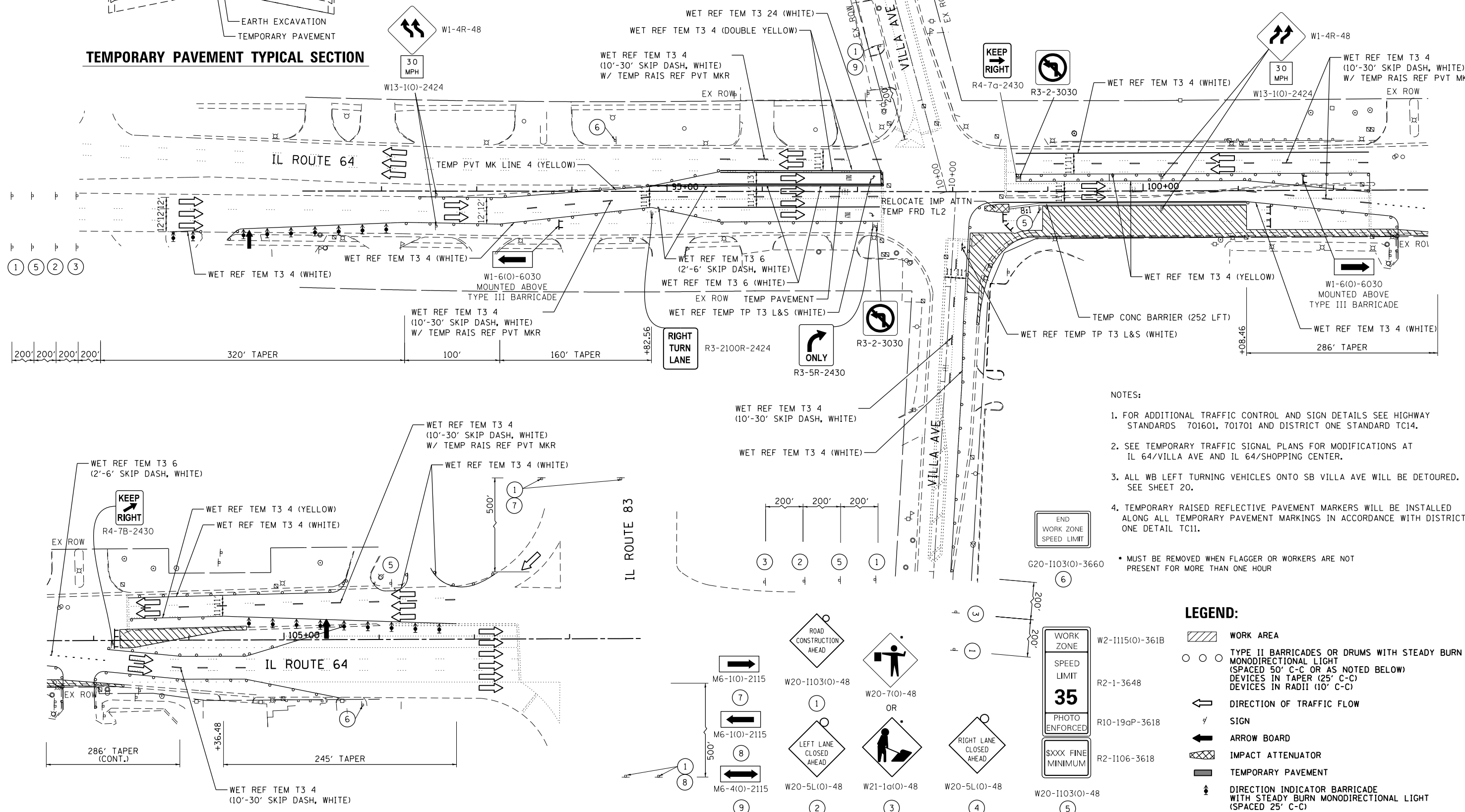


TEMPORARY PAVEMENT TYPICAL SECTION



- NOTES:**
- FOR ADDITIONAL TRAFFIC CONTROL AND SIGN DETAILS SEE HIGHWAY STANDARDS 701601, 701701 AND DISTRICT ONE STANDARD TC14.
 - SEE TEMPORARY TRAFFIC SIGNAL PLANS FOR MODIFICATIONS AT IL 64/VILLA AVE AND IL 64/SHOPPING CENTER.
 - ALL WB LEFT TURNING VEHICLES ONTO SB VILLA AVE WILL BE DETOURED. SEE SHEET 20.
 - TEMPORARY RAISED REFLECTIVE PAVEMENT MARKERS WILL BE INSTALLED ALONG ALL TEMPORARY PAVEMENT MARKINGS IN ACCORDANCE WITH DISTRICT ONE DETAIL TC11.
- MUST BE REMOVED WHEN FLAGGER OR WORKERS ARE NOT PRESENT FOR MORE THAN ONE HOUR

LEGEND:

- WORK AREA
- TYPE II BARRICADES OR DRUMS WITH STEADY BURN MONODIRECTIONAL LIGHT (SPACED 50' C-C OR AS NOTED BELOW) DEVICES IN TAPER (25' C-C) DEVICES IN RADII (10' C-C)
- DIRECTION OF TRAFFIC FLOW
- SIGN
- ARROW BOARD
- IMPACT ATTENUATOR
- TEMPORARY PAVEMENT
- DIRECTION INDICATOR BARRICADE WITH STEADY BURN MONODIRECTIONAL LIGHT (SPACED 25' C-C)

FILE NAME = I:\7290\7290.18 - IL 64 Over Salt Creek\CADD\Cadd Sheets\PI39308-sh1-stagging.dgn

COLLINS ENGINEERS
 123 N. Wacker Dr.
 Suite 300
 Chicago, IL 60606
 Phone: (312) 704-9300
 Fax: (312) 704-9300
 www.collinseng.com
 ILLINOIS PROFESSIONAL DESIGN FIRM LICENSE NO. 081-088993

| | | |
|-----------------------------|------------|-----------|
| USER NAME = rge11 | DESIGNED - | REVISED - |
| PLOT SCALE = 100.0000' / 1" | DRAWN - | REVISED - |
| PLOT DATE = 10/24/2013 | CHECKED - | REVISED - |
| | DATE - | REVISED - |

**STATE OF ILLINOIS
 DEPARTMENT OF TRANSPORTATION**

| | | | |
|--|-------|-----------|--------------|
| ILLINOIS ROUTE 64 (NORTH AVE) OVER SALT CREEK MAINTENANCE OF TRAFFIC - STAGE 3 | | | |
| SCALE: | SHEET | OF SHEETS | STA. TO STA. |

| | | | | |
|---------------------------|---------|--------|--------------|-----------|
| F.A.P. RTE. | SECTION | COUNTY | TOTAL SHEETS | SHEET NO. |
| 307 | 1318-BR | DuPAGE | 111 | 28 |
| CONTRACT NO. 60V24 | | | | |
| ILLINOIS FED. AID PROJECT | | | | |