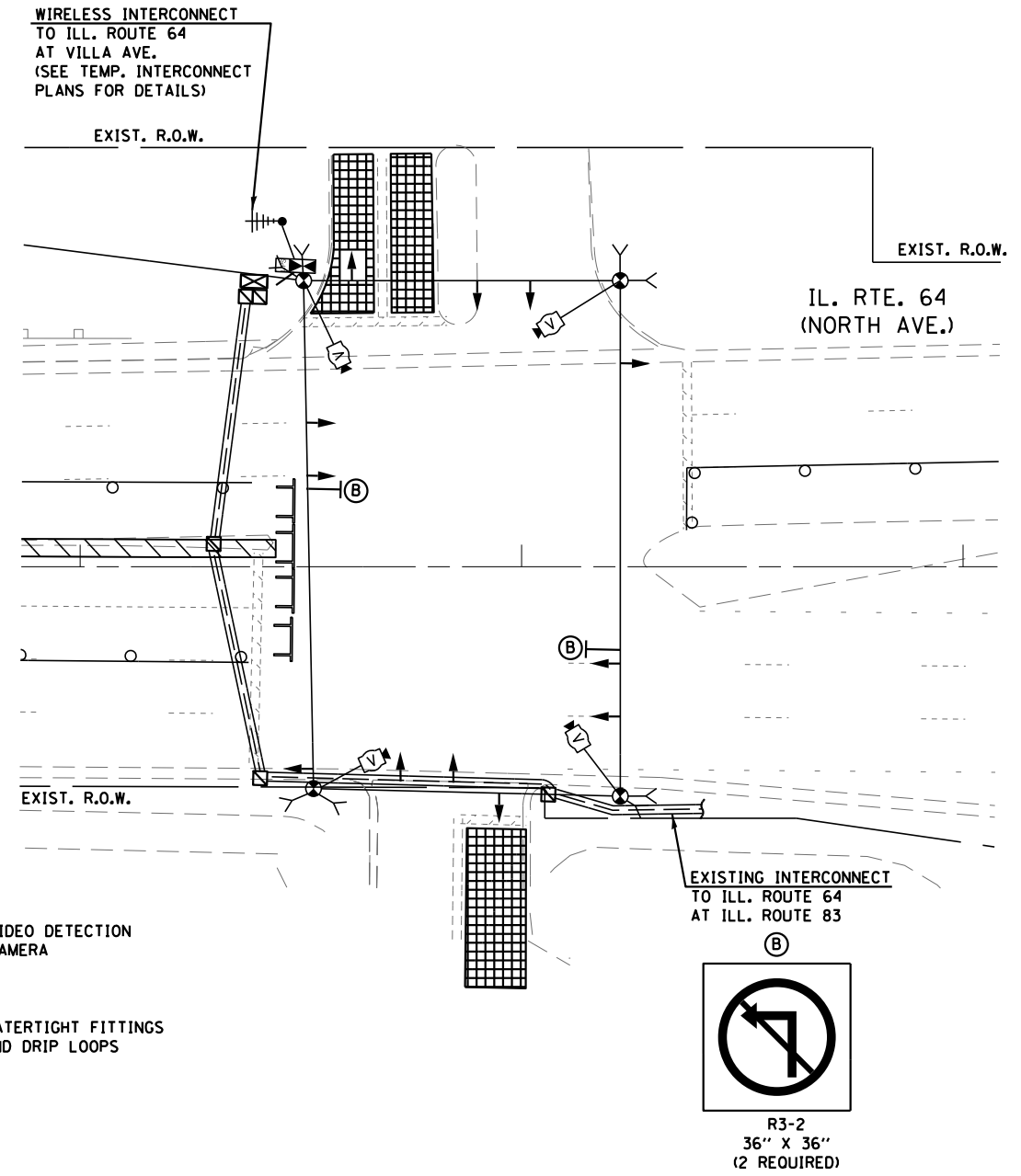
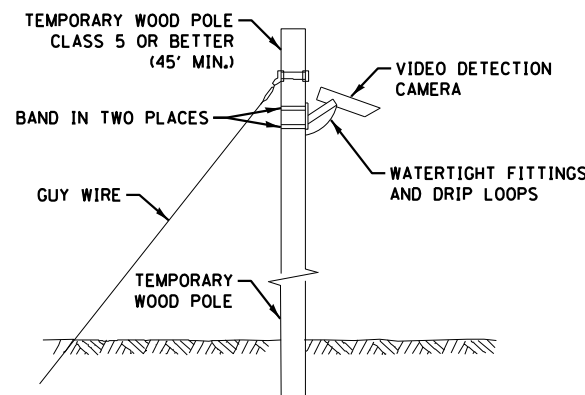


SIGNAL HEAD PLACEMENT FOR STAGE 3



SIGNAL HEAD PLACEMENT FOR STAGE 3A



TEMPORARY VIDEO DETECTION MOUNTING DETAIL
(NOT TO SCALE)

THE TRAFFIC SIGNAL CONTROL EQUIPMENT FOR THIS PROJECT SHALL BE "EAGLE" TO MATCH THE EXISTING ADJACENT SYSTEM.

I:\3003\DCN\CADD_Sheets\15171-sht-rs-20.dgn 24-OCT-2013 14:18:15



| | | |
|---------------------------------|-------------------|-----------|
| USER NAME = mgravida | DESIGNED - MG | REVISED - |
| | DRAWN - MG | REVISED - |
| PLOT SCALE = 48.000000:1.000000 | CHECKED - KGP | REVISED - |
| PLOT DATE = 24-OCT-2013 14:18 | DATE - 10/25/2013 | REVISED - |

STATE OF ILLINOIS
DEPARTMENT OF TRANSPORTATION

| | | |
|---|---------------------------|--------------|
| TEMPORARY TRAFFIC SIGNAL INSTALLATION PLAN | | |
| ILLINOIS ROUTE 64 (NORTH AVENUE) AT ELMHURST PLAZA | | |
| STAGE 2 AND STAGE 3A | | |
| SCALE: AS NOTED | SHEET NO. 18 OF 26 SHEETS | STA. TO STA. |

| | | | | |
|---------------------------|---------|--------|--------------|-----------|
| F.A.P. RTE. | SECTION | COUNTY | TOTAL SHEETS | SHEET NO. |
| 307 | 131B-BR | DUPAGE | 111 | 61 |
| CONTRACT NO. 60V24 | | | | |
| ILLINOIS FED. AID PROJECT | | | | |