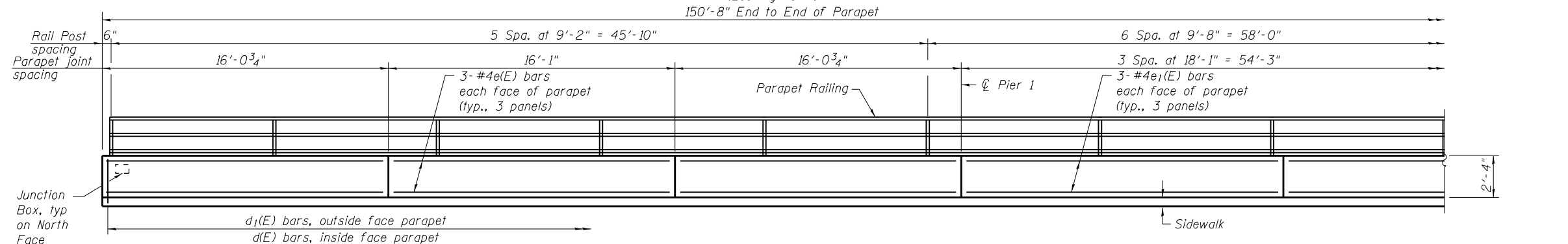


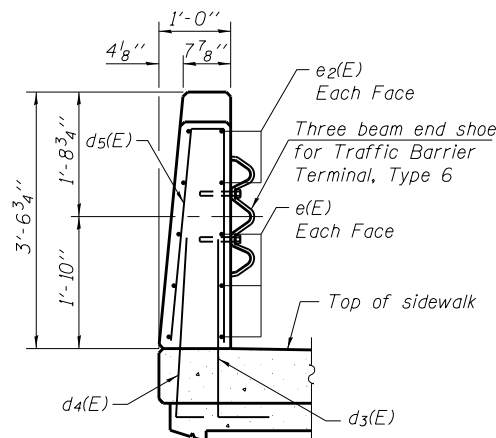
**ELEVATION OF SOUTH PARAPET**

(Looking North)

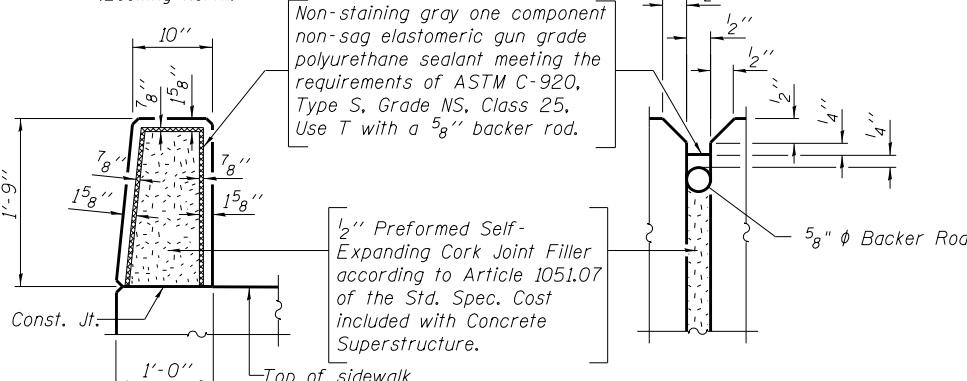


**ELEVATION OF NORTH PARAPET**

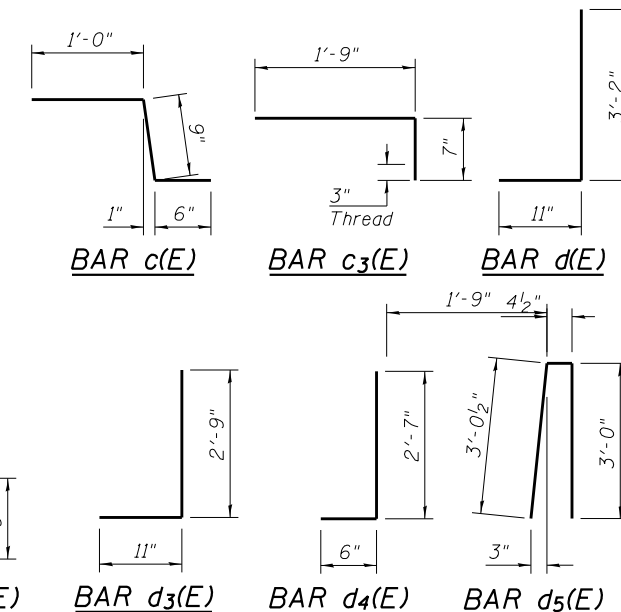
(Looking North)



**SECTION A-A**



**PARAPET JOINT DETAILS**



**SUPERSTRUCTURE  
BILL OF MATERIAL**

Bar	No.	Size	Length	Shape
a(E)	152	#4	29'-8"	—
a1(E)	152	#4	33'-6"	—
a2(E)	152	#4	37'-6"	—
a3(E)	151	#4	8'-0"	—
b(E)	630	#4	27'-4"	—
b1(E)	132	#5	27'-11"	—
c(E)	304	#5	2'-3"	⌋
c1(E)	152	#5	5'-7"	—
c2(E)	152	#5	10'-7"	—
c3(E)	304	#5	2'-4"	⌋
d(E)	152	#6	4'-1"	⌋
d1(E)	156	#4	3'-6"	—
d2(E)	64	#4	2'-1"	—
d3(E)	152	#6	3'-8"	—
d4(E)	152	#4	3'-1"	—
d5(E)	5	#4	6'-5"	—
e(E)	72	#4	15'-8"	—
e1(E)	36	#4	17'-9"	—
e2(E)	4	#4	3'-8"	—
Reinforcement Bars, Epoxy Coated		Pound		34,140
Concrete Superstructure		Cu. Yd.		93.6
Concrete Wearing Surface, 5"		Sq. Yd.		1702
Bridge Deck Grooving Protective Coat		Sq. Yd.		1390
				1883

Notes:  
See sheet S20 of S26 for Aluminum Railing, Type L details.  
See sheet S21 of S26 for Parapet Railing and Bicycle Railing details.  
Bicycle Railing (not shown) post spacing shall match the spacing of the Parapet Railing.

Note:  
South Parapet shown, North Parapet similar.

USER NAME =	DESIGNED - LJ	REVISED
PLOT SCALE =	CHECKED - EKM	REVISED
PLOT DATE	DRAWN - DR	REVISED
	CHECKED - LJ	REVISED

F.A.P. RTE.	SECTION	COUNTY	TOTAL SHEETS	SHEET NO.
307	131B-BR	DuPAGE	111	82
CONTRACT NO. 60V24			ILLINOIS FED. AID PROJECT	