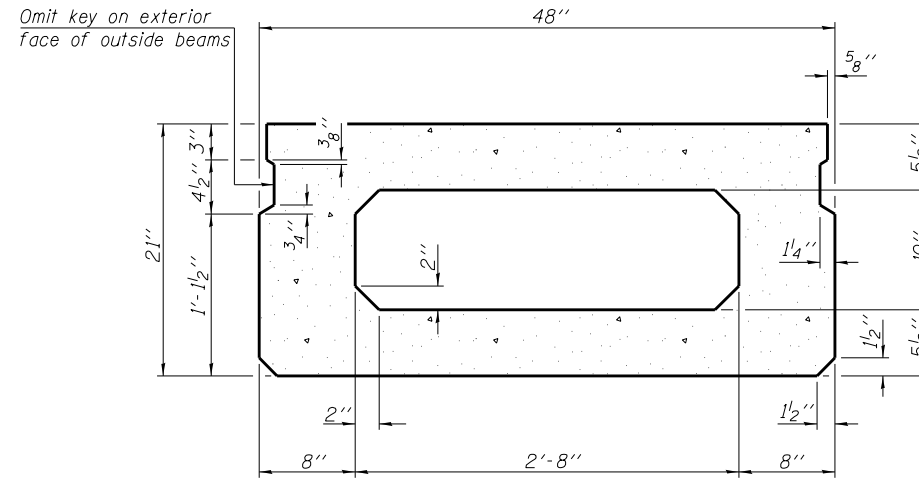
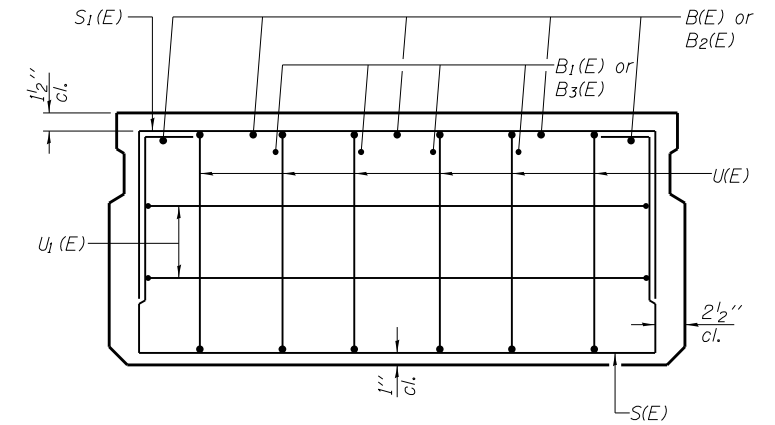


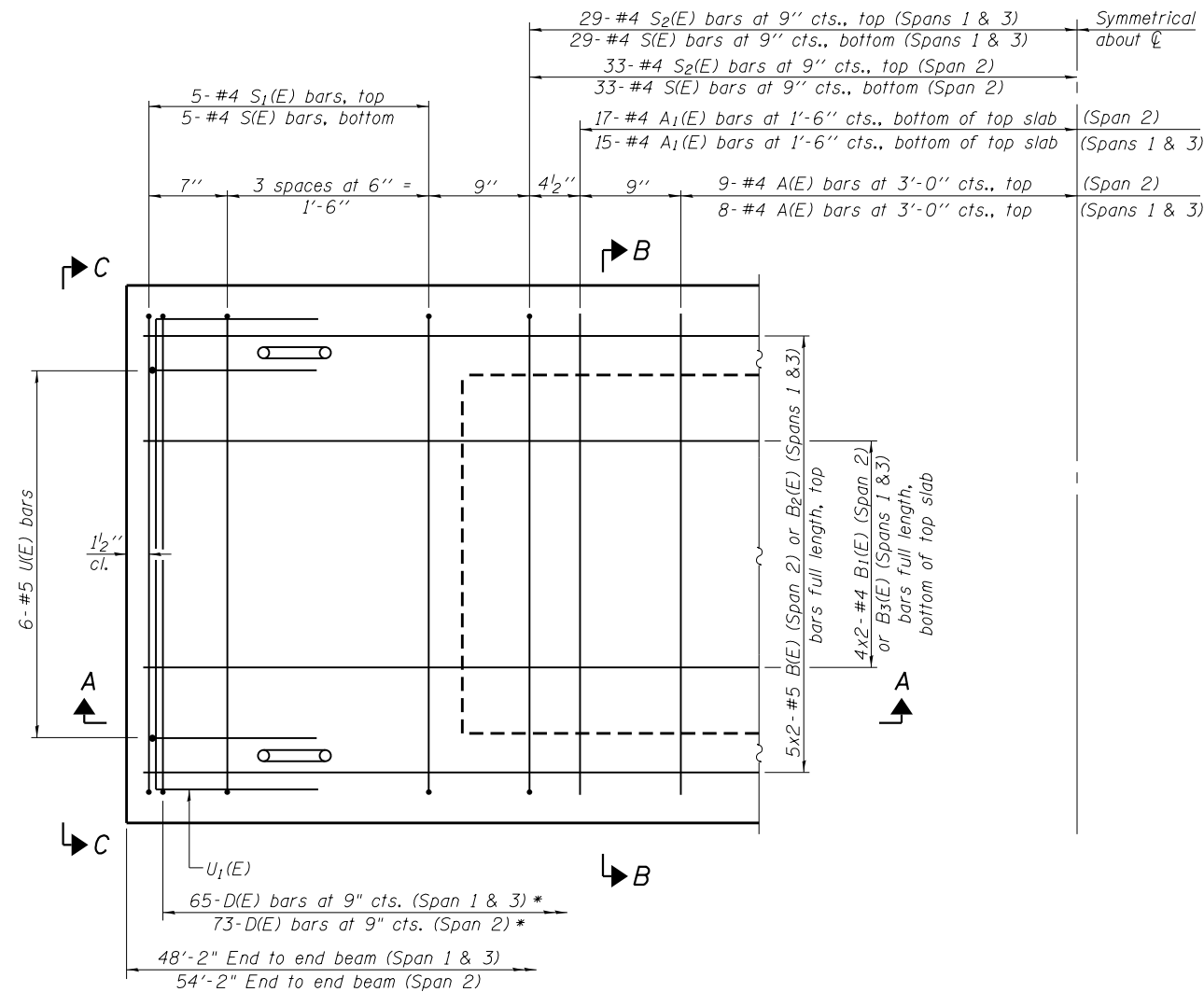
SECTION A-A



SECTION B-B
(Showing dimensions)

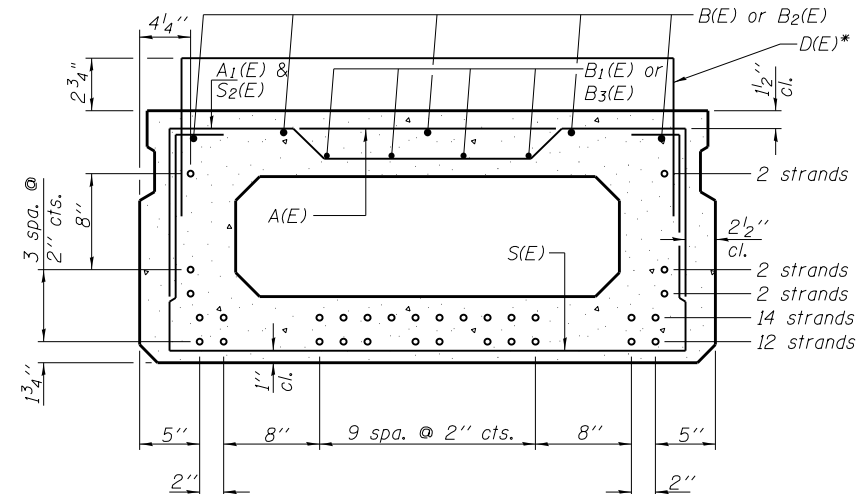


VIEW C-C



PLAN VIEW

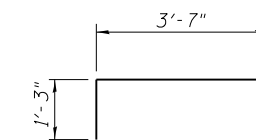
Note: Spacing of S(E) and S2(E) bars may be adjusted up to 4" in the immediate area of the transverse tie diaphragms to miss the block outs for the transverse ties.



SECTION B-B

(Showing reinforcement and permissible strand locations)

Note: Place the number of strands specified in each row symmetrically about the centerline of beam in the permissible strand locations shown.



D(E) BAR

* The bar shall be placed in one beam only in each span (below concrete parapet for parapet railing). See sheet S12 for details.

MINIMUM BAR LAP

#4 bar = 2'-0"
#5 bar = 2'-6"

BAR LIST
ONE BEAM ONLY - SPANS 1 & 3
(For Information Only)

| Bar | No. | Size | Length | Shape |
|-------|-----|------|--------|-------|
| A(E) | 15 | #4 | 3'-7" | — |
| A1(E) | 29 | #4 | 3'-10" | ~ |
| B2(E) | 10 | #5 | 25'-3" | — |
| B3(E) | 8 | #4 | 25'-0" | — |
| D(E)* | 65 | #4 | 6'-1" | U |
| S(E) | 68 | #4 | 7'-5" | U |
| S1(E) | 10 | #4 | 5'-11" | U |
| S2(E) | 58 | #4 | 6'-2" | U |
| U(E) | 12 | #5 | 4'-0" | U |
| U1(E) | 4 | #4 | 6'-0" | U |

BAR LIST
ONE BEAM ONLY - SPAN 2
(For Information Only)

| Bar | No. | Size | Length | Shape |
|-------|-----|------|--------|-------|
| A(E) | 17 | #4 | 3'-7" | — |
| A1(E) | 33 | #4 | 3'-10" | ~ |
| B(E) | 10 | #5 | 28'-3" | — |
| B1(E) | 8 | #4 | 28'-0" | — |
| D(E)* | 73 | #4 | 6'-1" | U |
| S(E) | 76 | #4 | 7'-5" | U |
| S1(E) | 10 | #4 | 5'-11" | U |
| S2(E) | 66 | #4 | 6'-2" | U |
| U(E) | 12 | #5 | 4'-0" | U |
| U1(E) | 4 | #4 | 6'-0" | U |

Note: See sheet S15 for additional details and Bill of Material.