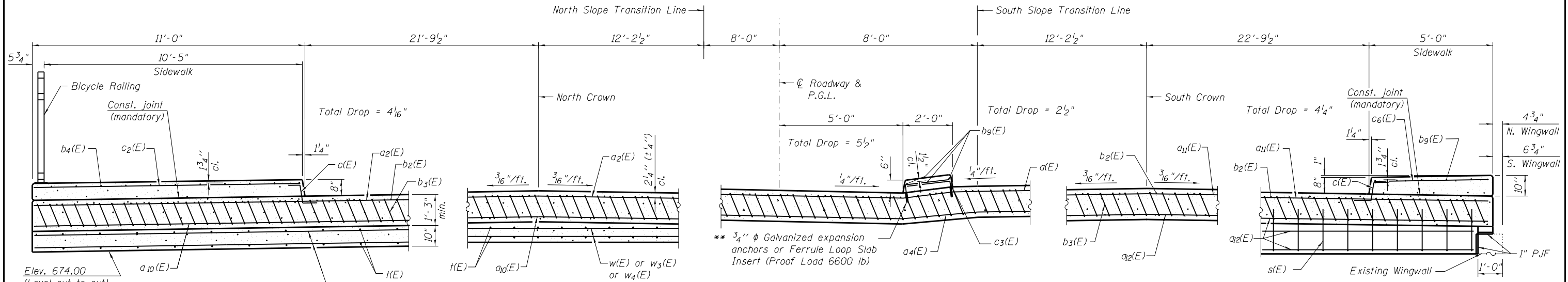


Notes:
 See sheet S16 of S26 for Detail A.
 Approach slab and parapet concrete shall be paid for as Concrete Superstructure.
 Approach footing concrete shall be paid for as Concrete Structures.
 Reinforcement shall be paid for as Reinforcement Bars, Epoxy Coated.
 For v(E) bar details, see sheet S23 of S26.
 The approach footing maximum applied service bearing pressure (Q_{max}) = 2.0 ksf.
 For bar splicer details, see sheet S26 of S26.
 Cost of excavation for approach footing included with Concrete Structures.

* Tilt #10 b₃(E) bars as required to maintain clearance.
 *** Cost included with Concrete Superstructure.



AT APPROACH FOOTING

NEAR ABUTMENT

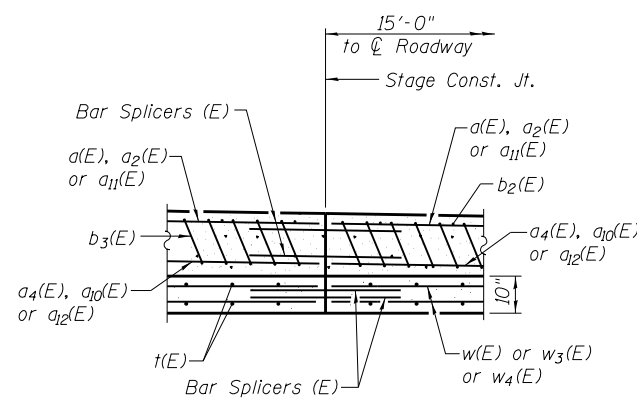
SECTION D-D
(Looking East)

** Cost of expansion anchors/inserts included in Reinforcement Bars, Epoxy Coated.

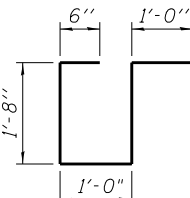
BILL OF MATERIAL

Bar	No.	Size	Length	Shape
a(E)	25	#4	29'-8"	—
a ₂ (E)	25	#4	37'-6"	—
a ₄ (E)	51	#5	29'-8"	—
a ₁₀ (E)	102	#5	20'-1"	—
a ₁₁ (E)	25	#4	32'-8"	—
a ₁₂ (E)	51	#5	32'-8"	—
b ₂ (E)	84	#4	29'-8"	—
b ₃ (E)	249	#10	30'-1"	—
b ₄ (E)	12	#5	25'-7"	—
b ₅ (E)	40	#10	8'-2"	—
b ₇ (E)	40	#4	8'-2"	—
b ₉ (E)	10	#5	29'-8"	—
c(E)	51	#5	2'-3"	—
c ₂ (E)	25	#5	10'-7"	—
c ₃ (E)	62	#5	2'-4"	—
c ₆ (E)	31	#5	4'-8"	—
s(E)	102	#5	5'-10"	—
s ₁ (E)	5	#6	17'-9"	—
w(E)	40	#5	29'-8"	—
w ₃ (E)	80	#5	20'-5"	—
w ₄ (E)	40	#5	32'-8"	—
t(E)	204	#4	9'-8"	—
Concrete Superstructure		Cu. Yd.	158.7	
Concrete Structures		Cu. Yd.	31.2	
Bridge Deck Grooving		Sq. Yd.	277	
Protective Coat		Sq. Yd.	352	
Reinforcement Bars, Epoxy Coated		Pound	50,330	

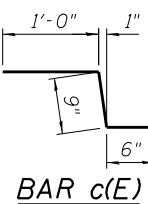
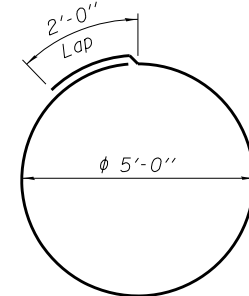
SECTION AT STAGE CONST. JOINT
(Shown at Approach Footing)



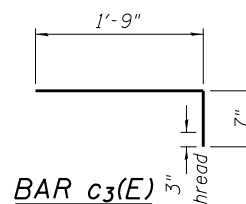
BAR s(E)



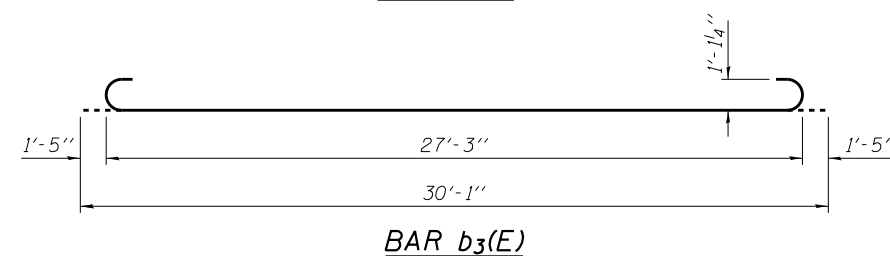
BAR s₁(E)



BAR c(E)



BAR c₃(E)



BAR b₃(E)

(Sheet 2 of 2)

USER NAME =	DESIGNED - LJ	REVISED
PLOT SCALE =	CHECKED - EKM	REVISED
PLOT DATE =	DRAWN - DR/PRH	REVISED
	CHECKED - LJ	REVISED

F.A.P. RTE.	SECTION	COUNTY	TOTAL SHEETS	SHEET NO.
307	131B-BR	DuPAGE	111	86
CONTRACT NO. 60V24			ILLINOIS FED. AID PROJECT	