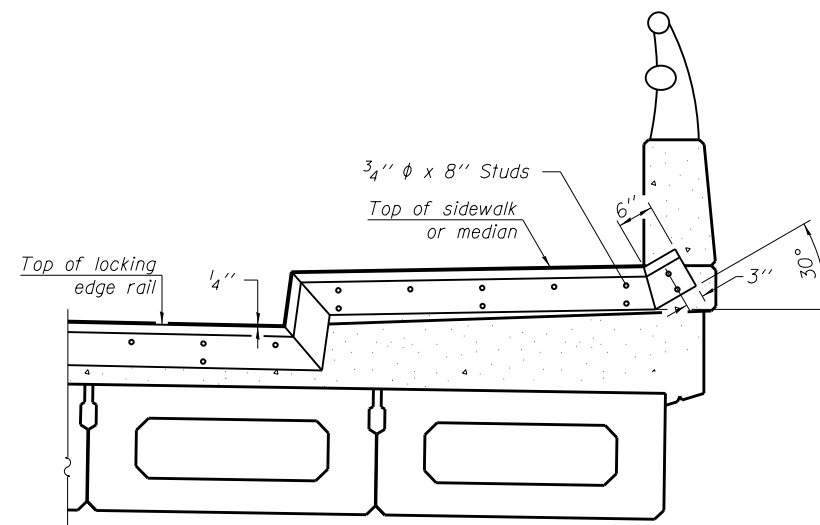


**TYPICAL END TREATMENT
AT NORTH SIDEWALK OR MEDIAN**

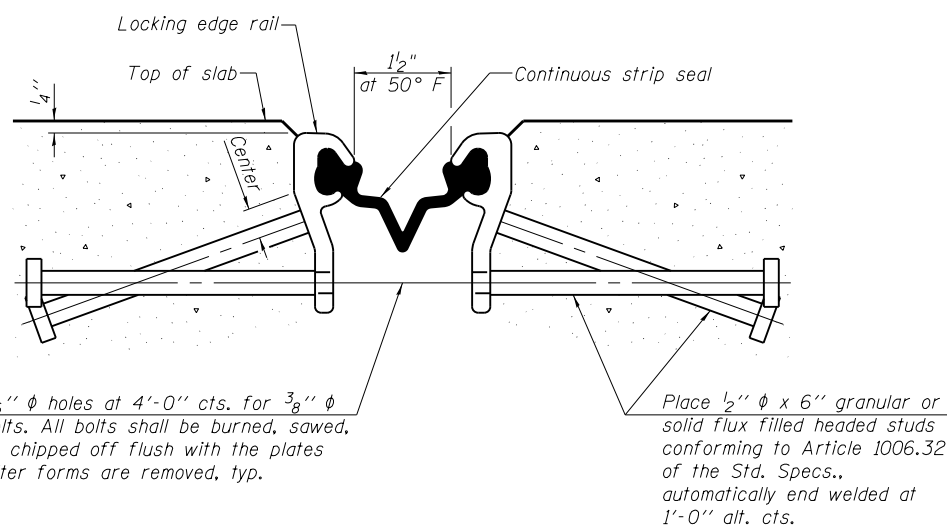
Shorter plates with a single row of studs at 12" cts. may be necessary on medians which are shallower than 9". See manufacturer's recommendation.



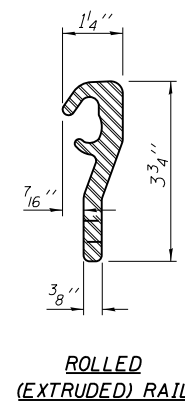
**TYPICAL END TREATMENT
AT SOUTH SIDEWALK OR MEDIAN**

Shorter plates with a single row of studs at 12" cts. may be necessary on medians which are shallower than 9". See manufacturer's recommendation.

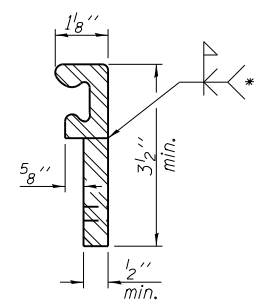
Notes:
 The strip seal shall be made continuous and shall have a minimum thickness of 1/4". The configuration of the strip seal shall match the configuration of the Locking Edge Rails.
 The height and thickness of the Locking Edge Rails shown are minimum dimensions. The actual configuration of the Locking Edge Rails and matching strip seal may vary from manufacturer to manufacturer. Flanged edge rails will not be allowed.
 The inside of the Locking Edge Rail groove shall be free of weld residue.
 Locking Edge Rails may be spliced at slope discontinuities and stage construction joints.
 The manufacturer's recommended installation methods shall be followed.
 All steel components shall be galvanized after fabrication according to Article 520.03 of the Standard Specifications.
 Maximum space between rail segments at stage lines shall be 3/16", sealed with a suitable sealant



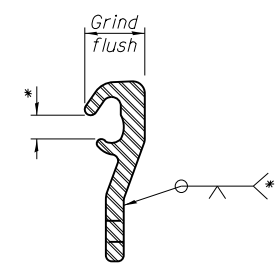
**SECTION THRU STRIP SEAL JOINT
FOR OVERLAY OVER DECK BEAMS**



**ROLLED
(EXTRUDED) RAIL**



WELDED RAIL



**LOCKING EDGE
RAIL SPLICE**

Rolled rail shown, welded rail similar.

* Omit weld at seal opening.
 ** Back gouge not required if complete joint penetration is verified by mock-up.

LOCKING EDGE RAIL

BILL OF MATERIAL

Item	Unit	Total
Preformed Joint Strip Seal	Foot	207.5

USER NAME =	DESIGNED - LJ	REVISED
	CHECKED - EKM	REVISED
PLOT SCALE =	DRAWN - DR	REVISED
PLOT DATE =	CHECKED - LJ	REVISED

F.A.P. RTE.	SECTION	COUNTY	TOTAL SHEETS	SHEET NO.
307	131B-BR	DuPAGE	111	91
CONTRACT NO. 60V24				
ILLINOIS FED. AID PROJECT				