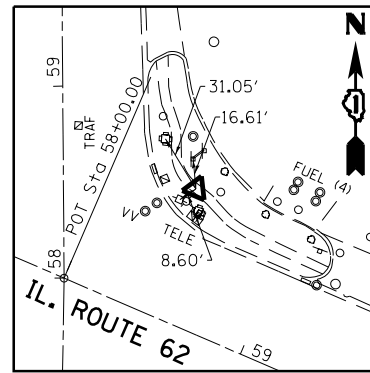
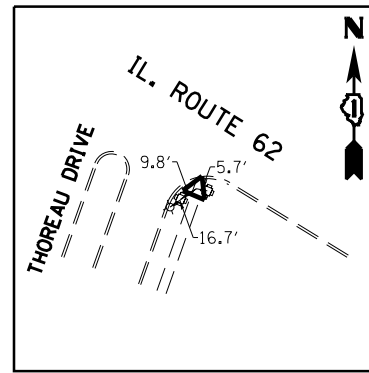


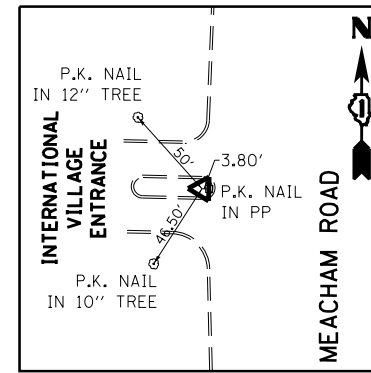
CONTROL POINT #1
P.K. NAIL IN CENTER OF BIT. PATH APPROX 830' WEST OF MEACHAM ROAD
ELEVATION 737.62



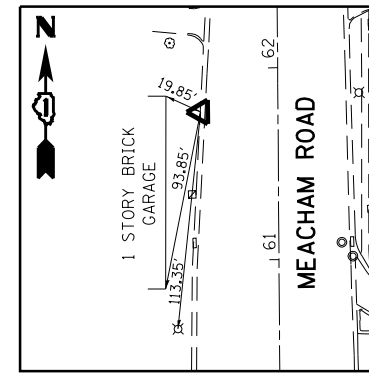
CONTROL POINT #2
CUT CROSS IN CONCRETE WALK AT N.E. CORNER OF INTERSECTION BY SHELL GAS STATION
ELEVATION 733.12



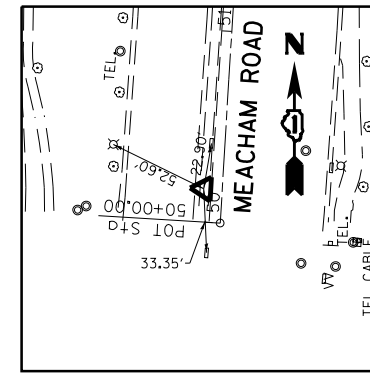
CONTROL POINT #3
CUT CROSS IN CONCRETE WALK
ELEVATION 737.47



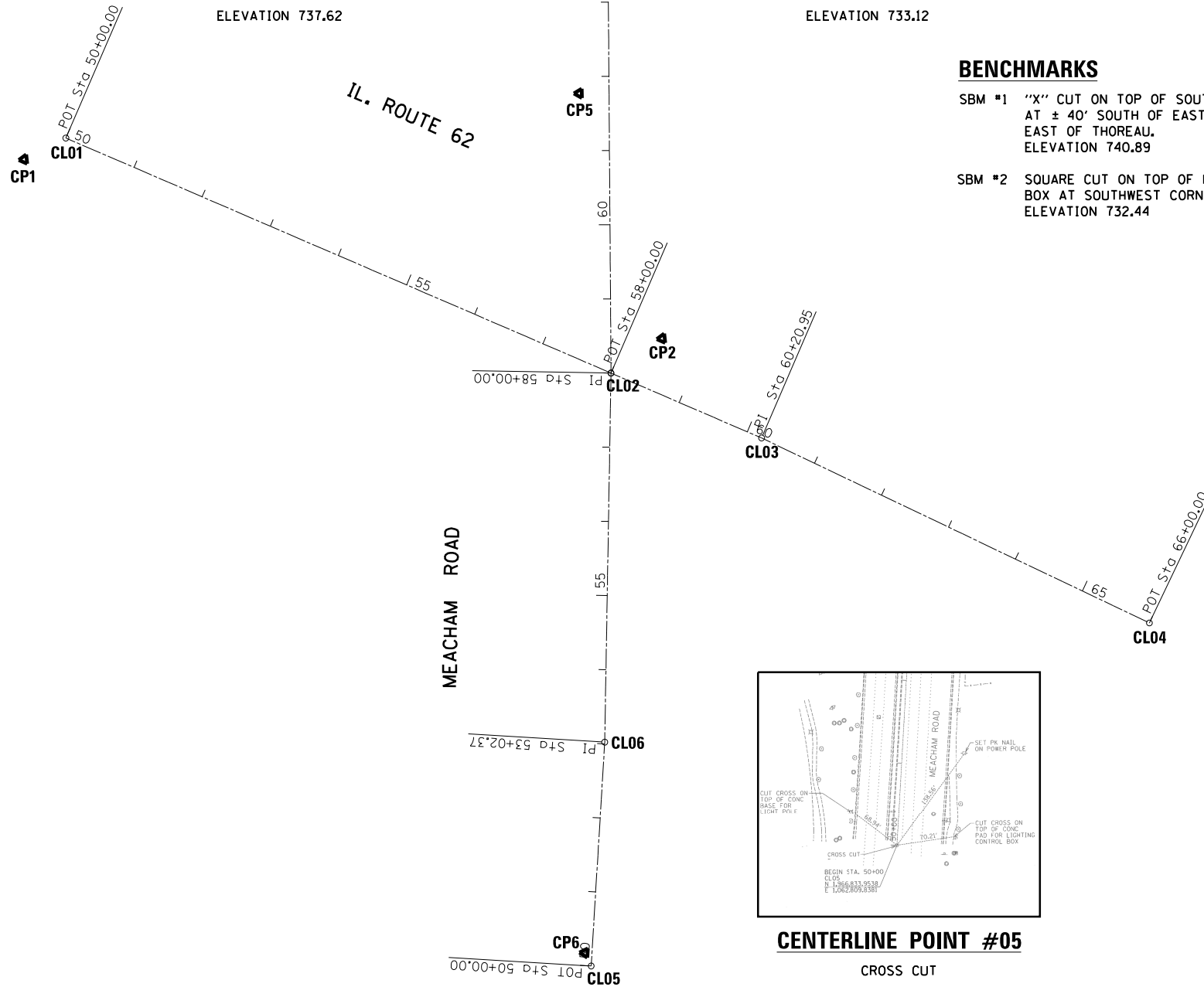
CONTROL POINT #4
FOUND DISK IN CONCRETE STAMPED VILLAGE OF SCHAUMBURG CONTROL 1992 WITH CROSS CUT AT CENTER
ELEVATION 740.97



CONTROL POINT #5
CUT CROSS ON TOP OF CURB APPROX. 350' NORTH FROM CL OF IL. ROUTE 72
ELEVATION 739.92

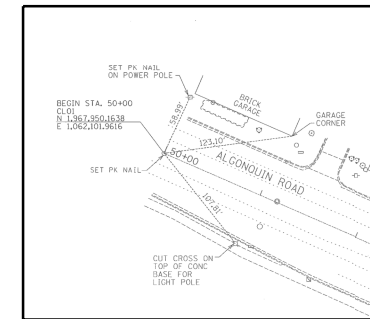


CONTROL POINT #6
CUT CROSS IN CONCRETE MEDIAN APPROX. 785' SOUTH OF IL. ROUTE 72
ELEVATION 731.11

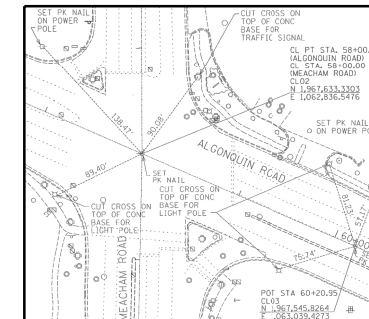


BENCHMARKS

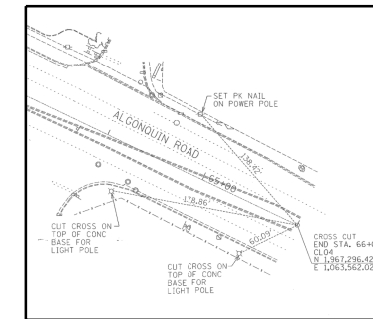
- SBM #1 "X" CUT ON TOP OF SOUTH FLANGE BOLT OF FIRE HYDRANT AT ± 40' SOUTH OF EAST OF IL. ROUTE 62 AND 100' WEST OF EAST OF THOREAU. ELEVATION 740.89
- SBM #2 SQUARE CUT ON TOP OF NORTHWEST CORNER OF TRAFFIC SIGNAL BOX AT SOUTHWEST CORNER OF IL. ROUTE 62 AND MEACHAM ROAD. ELEVATION 732.44
- SBM #3 TOP OF R,R. SPIKE HEAD IN WEST FACE OF POWER POLE WITH LIGHT AT NORTHEAST CORNER OF MEACHAM ROAD AND BRAIRWOOD LANE. ELEVATION 742.79
- SBM #4 TOP OF R,R. SPIKE IN SOUTH FACE OF 6TH POWER POLE WITH TRANSFORMER WEST OF MEACHAM ROAD AND NORTH SIDE OF IL. ROUTE 62. ELEVATION 738.90



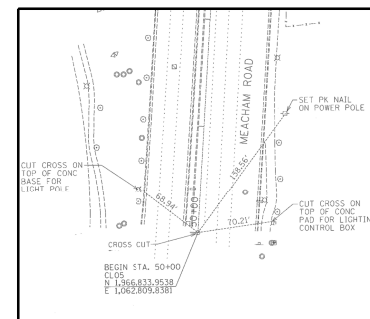
CENTERLINE POINT #01
SET P.K. NAIL
BEGIN STA. 50+00
N 1967950.1638
E 1062101.9616



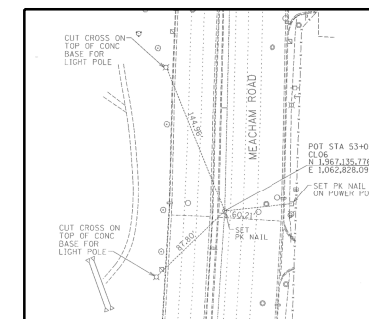
CENTERLINE POINT #02
SET P.K. NAIL
PT STA. 58+00 (IL. ROUTE 72)
PT STA. 58+00 (MEACHAM ROAD)
N 1967633.3303
E 1062836.5476



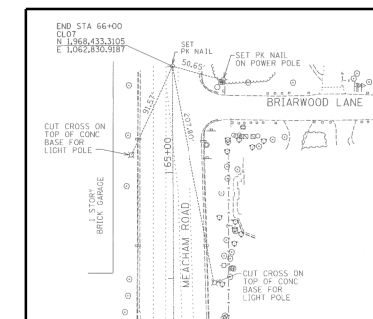
CENTERLINE POINT #04
CROSS CUT
END STA. 66+00
N 1967296.4270
E 1063562.0205



CENTERLINE POINT #05
CROSS CUT
BEGIN STA. 50+00
N 1966833.9538
E 1062809.8381



CENTERLINE POINT #06
SET P.K. NAIL
POT STA. 53+02.37
N 1967135.7760
E 1062828.0961



CENTERLINE POINT #7
SET P.K. NAIL
END STA. 66+00
N 1968433.3105
E 1062830.9187

FILE NAME =	USER NAME = SMITHCJ	DESIGNED -	REVISED -	STATE OF ILLINOIS DEPARTMENT OF TRANSPORTATION	ALIGNMENT, TIES AND BENCHMARKS IL. ROUTE 62 AT MEACHAM ROAD				F.A.P. RTE.	SECTION	COUNTY	TOTAL SHEETS	SHEET NO.			
Default	1-sh-t-ATB.dgn	DRAWN -	REVISED -		SCALE: 1" = 50'	SHEET	OF	SHEETS	STA.	TO	STA.	339	116-RS-5	COOK	54	10
	PLOT SCALE = 200.0000' / in.	CHECKED -	REVISED -													
	PLOT DATE = 10/18/2013	DATE -	REVISED -													
												CONTRACT NO. 60W05		ILLINOIS FED. AID PROJECT		