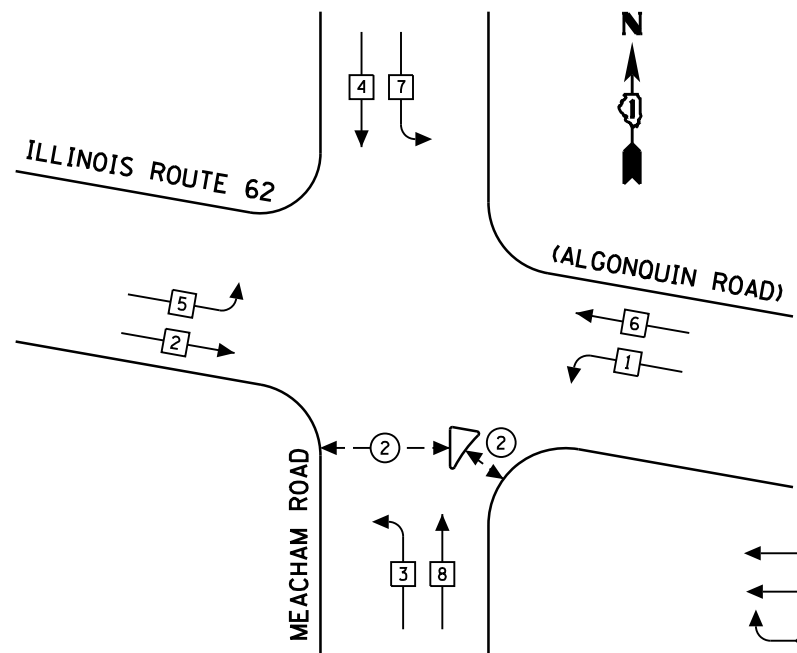


CONTROLLER SEQUENCE

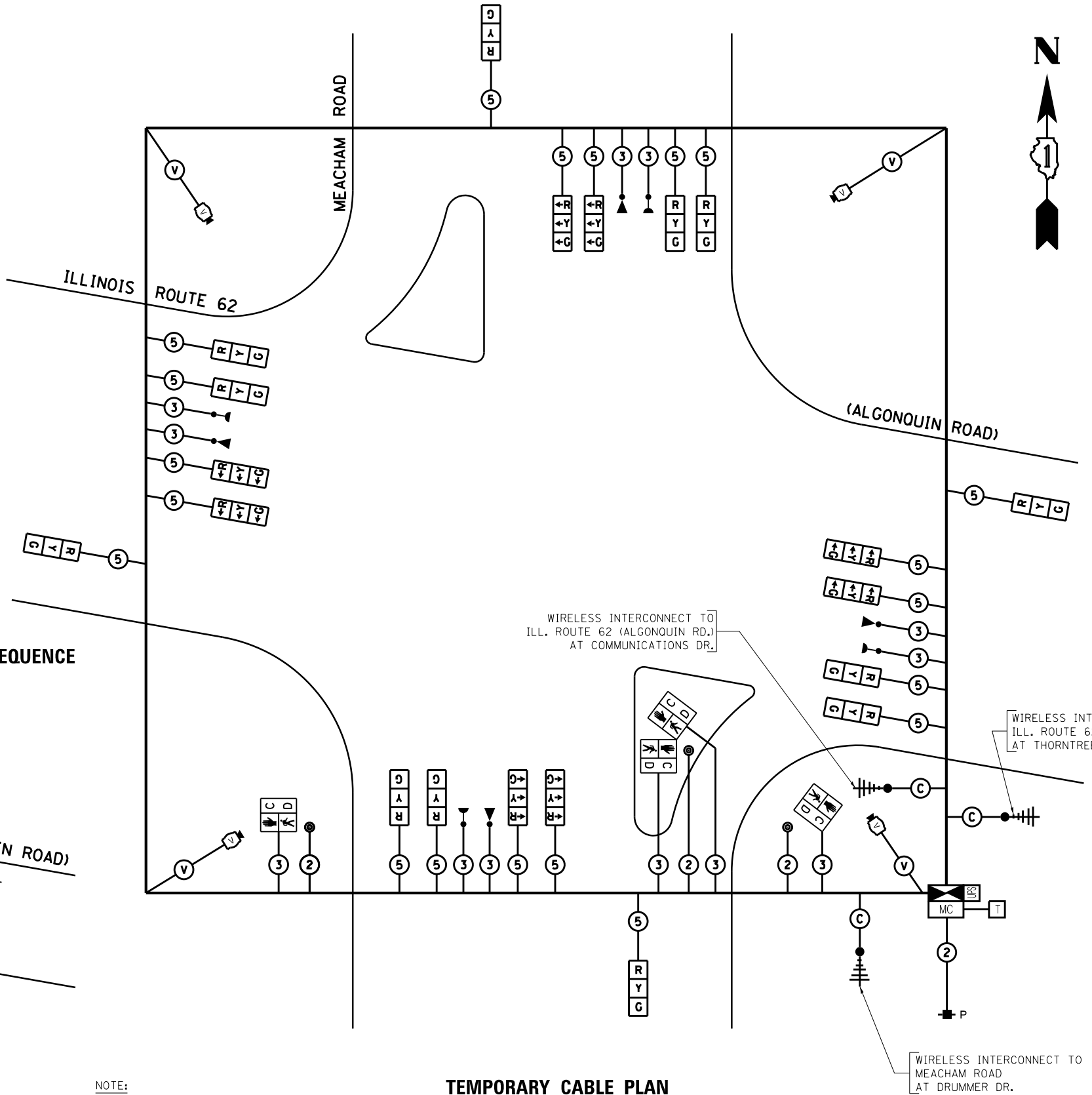
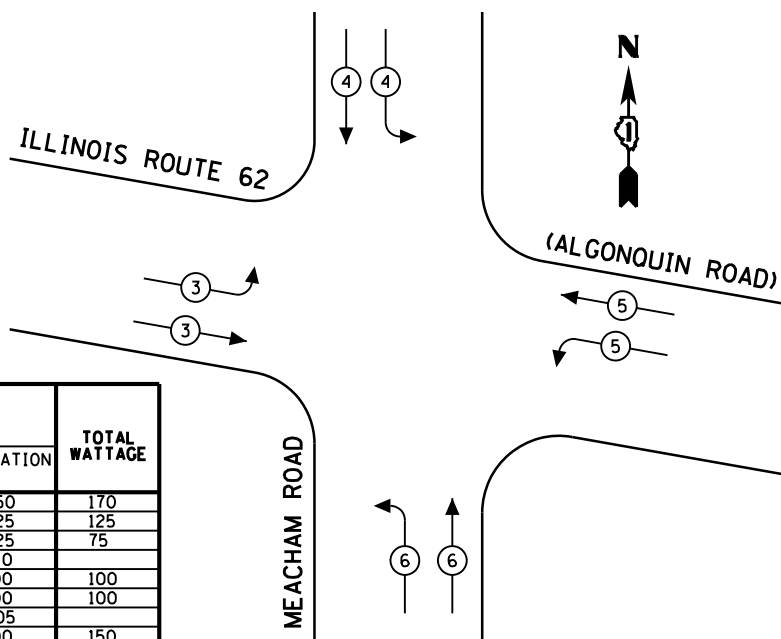


TEMPORARY PHASE DESIGNATION DIAGRAM

LEGEND

- ◁ ⊙ ▷ DUAL ENTRY PHASE
- ◁ □ ▷ SINGLE ENTRY PHASE
- ◁ ◇ (O.L.) ▷ OVERLAP
- ◁ ⊙ ▷ PEDESTRIAN PHASE
- NUMBER REFERS TO ASSOCIATED PHASE

TEMPORARY EMERGENCY VEHICLE PREEMPTION SEQUENCE

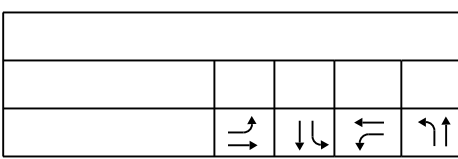


TEMPORARY CABLE PLAN
(NOT TO SCALE)

NOTE:
TEMPORARY RADIO INTERCONNECT SHALL NOT BE REMOVED UNTIL FIBER INTERCONNECT IS INSTALLED AND OPERATIONAL.

THE TRAFFIC SIGNAL CONTROL EQUIPMENT FOR THIS PROJECT SHALL BE "ECONOLITE" TO MATCH THE EXISTING ADJACENT SYSTEM.

I.D.O.T. TRAFFIC SIGNAL INSTALLATION ELECTRICAL SERVICE REQUIREMENTS					TOTAL WATTAGE
TYPE	NO LAMPS	WATTAGE		% OPERATION	
SIGNAL (RED)	20	INCAND.	LED	0.50	170
(YELLOW)	20			0.25	125
(GREEN)	20			0.25	75
ARROW				0.10	
PED. SIGNAL	4			1.00	100
CONTROLLER	1			1.00	100
ILLUM. SIGN				0.05	
VIDEO SYSTEM	1	150		1.00	150
FLASHER				0.50	
ENERGY COSTS TO:				TOTAL =	720
ILLINOIS DEPARTMENT OF TRANSPORTATION 201 WEST CENTER COURT SCHAUMBURG, ILLINOIS 60196-1096 ENERGY SUPPLY CONTACT: ELEANOR SARALLO PHONE: (630) 424-5124 COMPANY: COMMONWEALTH EDISON					



FILE NAME =	USER NAME = SMITHCJ	DESIGNED - PKG	REVISED -
et:\pwwork\pwwork\smithcjd0267315\PI15451	1-sh-t-ts.dgn	DRAWN - EA, EB	REVISED -
	PLOT SCALE = 48.0000' / in.	CHECKED - PKG	REVISED -
	PLOT DATE = 10/18/2013	DATE - 7/19/2013	REVISED -

STATE OF ILLINOIS
DEPARTMENT OF TRANSPORTATION

TEMPORARY CABLE PLAN, TEMPORARY PHASE DESIGNATION DIAGRAM
TEMPORARY EMERGENCY VEHICLE PREEMPTION SEQUENCE
ILLINOIS ROUTE 62 (ALGONQUIN ROAD) AT MEACHAM ROAD
SCALE: 1"=20' SHEET NO. OF SHEETS STA. TO STA.

F.A.P. RTE.	SECTION	COUNTY	TOTAL SHEETS	SHEET NO.
339	116-RS-5	COOK	54	31
CONTRACT NO. 60W05				
FED. ROAD DIST. NO. - ILLINOIS FED. AID PROJECT				