

FOR INDEX OF SHEETS AND STANDARDS SEE SHEET NO. 2 AND 3

STATE OF ILLINOIS
DEPARTMENT OF TRANSPORTATION

DIVISION OF HIGHWAYS

**PROPOSED
HIGHWAY PLANS**

PEORIA STREET BRIDGE AT
I-290/CONGRESS PARKWAY
(CIRCLE INTERCHANGE)
SECTION 2013-011R
BRIDGE REPLACEMENT,
ROADWAY RECONSTRUCTION, LIGHTING,
CTA STATION REHABILITATION
PROJECT: ACNHPP-0290(200)
COOK COUNTY
C-91-231-13



LOCATION OF SECTION INDICATED THIS: -

AECOM

TranSystems

AAA ENGINEERING

STATE OF ILLINOIS
DEPARTMENT OF TRANSPORTATION
DIVISION OF HIGHWAYS

SUBMITTED October 15 2013

John D. Baranzello, P.E.
DEPUTY DIRECTOR OF HIGHWAYS, REGION ENGINEER

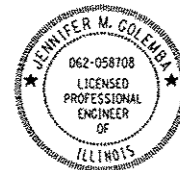
John D. Baranzello, P.E.
ENGINEER OF DESIGN AND ENVIRONMENT

Omer Osman, P.E.
DIRECTOR OF HIGHWAYS, CHIEF ENGINEER

**PRINTED BY THE AUTHORITY
OF THE STATE OF ILLINOIS**

DESIGN DESIGNATIONS: POSTED /DESIGN SPEEDS:

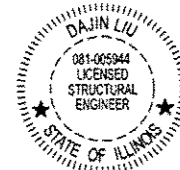
PEORIA STREET	0(2040)	LOCAL STREET (URBAN)	N/A
WB I-290	54,000(2040)	INTERSTATE	45 /50 MPH
EB I-290	33,000(2040)	INTERSTATE	45 /50 MPH
NW RAMP	36,000(2040)	INTERSTATE	35 /35 MPH
EN RAMP	31,000(2040)	INTERSTATE	30 /30 MPH
ES RAMP	44,000(2040)	INTERSTATE	40 /40 MPH



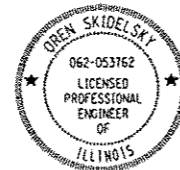
Jennifer M. Golemba 10/10/13
JENNIFER M. GOLEMBA DATE
LICENSE EXPIRES 11/30/2013
SHEET RANGE



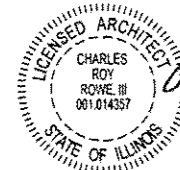
William D. Stermer 10/10/13
WILLIAM D. STERMER DATE
LICENSE EXPIRES 11/30/2013
SHEET RANGE



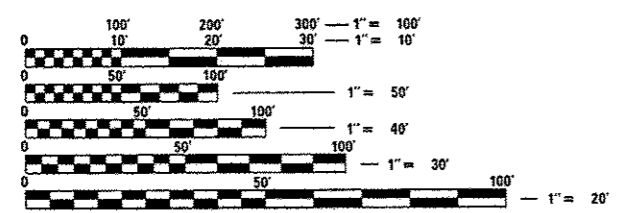
Dajin Liu 10/10/13
DAJIN LIU DATE
LICENSE EXPIRES 11/30/2014
SHEET RANGE



Oren X. Skidelsky 10/10/13
OREN X. SKIDELSKY DATE
LICENSE EXPIRES 11/30/2013
SHEET RANGE



Charles Roy Rowe III 10/10/13
CHARLES ROY ROWE DATE
LICENSE EXPIRES 11/30/2014
SHEET RANGE

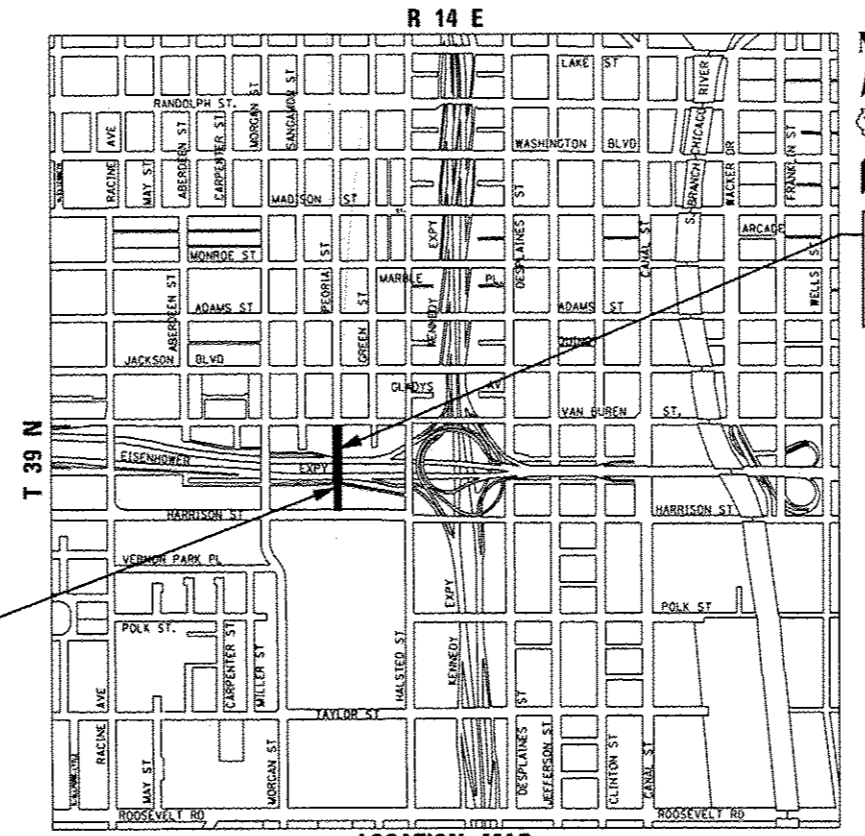


FULL SIZE PLANS HAVE BEEN PREPARED USING STANDARD ENGINEERING SCALES. REDUCED SIZED PLANS WILL NOT CONFORM TO STANDARD SCALES. IN MAKING MEASUREMENTS ON REDUCED PLANS, THE ABOVE SCALES MAY BE USED.

C.U.A.N.
CHICAGO UTILITY ALERT NETWORK
1-312-744-7000

NPDES PERMIT INFORMATION	
NPDES Disturbed	Area = 1.98 Acres
Approximate Location of Roadway is :	
Longitude	87° 38' 58.22" W
Latitude	41° 52' 31.87" N

PEORIA STREET BRIDGE
SN 016-1708
STA 3702 + 57.64 TO
STA 3705 + 30.73



LOCATION MAP
NOT TO SCALE
THE PROJECT IS LOCATED IN THE CITY OF CHICAGO
GROSS LENGTH = 687.95 FT (0.130 MILES)
NET LENGTH = 687.95 FT (0.130 MILES)

DISTRICT 1 DESIGN /CONSULTANT SERVICES: BRIAN KUTTAB, P.E. (847)705-4431 SCHAUMBURG, ILLINOIS

PROJECT ENGINEER: ADDIS ABEBAW
PROJECT MANAGER: BRIAN KUTTAB

CONTRACT NO. 60W29