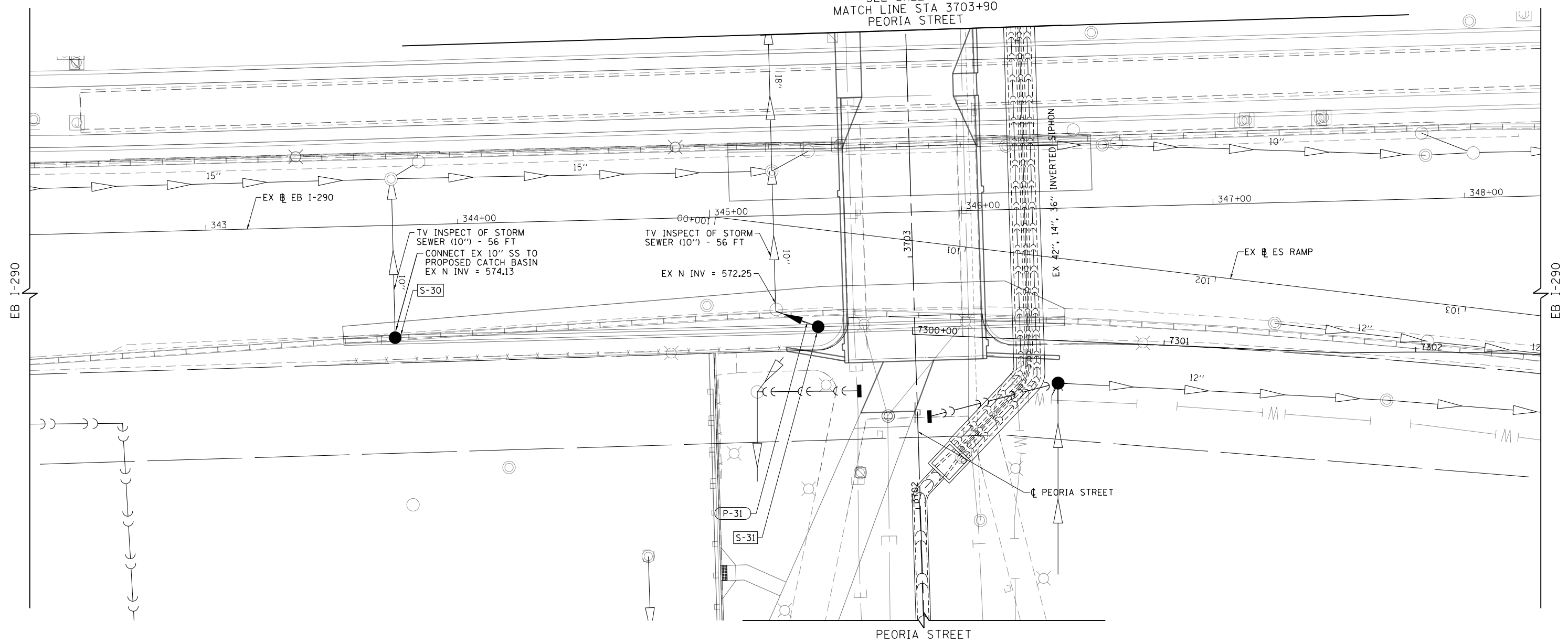
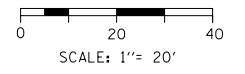


SEE SHEET NO. 79
MATCH LINE STA 3703+90
PEORIA STREET



NOTES:

1. REFER TO SHEETS 28 TO 29 FOR DRAINAGE STRUCTURE AND PIPE SCHEDULES.
2. SEE SHEET 28 FOR PEORIA STREET DRAINAGE AND REMOVALS.
3. EXISTING INVERTS SHOWN AT STRUCTURES ARE BASED ON AS-BUILT DRAWINGS AND SHALL BE CONFIRMED BY THE CONTRACTOR PRIOR TO FABRICATING PROPOSED STRUCTURES.



FILE PATH = p:\388035\pmt\lsc\omni\me\local\p\wec\000\Documents\01_Americas\Transportation\60269938_Circle\Phase_1\1000_CAD\005_Roadway_Sheets\60W29_Sht-Drain-05.dgn



D160W29-Sht-Drain-05.dgn	DESIGNED - MNB	REVISED -
USER NAME = BAW\bart	DRAWN - BAW	REVISED -
PLOT SCALE = 40.0000' / in.	CHECKED - JWC	REVISED -
PLOT DATE = 10/28/2013	DATE - 10/30/2013	REVISED -

**STATE OF ILLINOIS
DEPARTMENT OF TRANSPORTATION**

**DRAINAGE PLAN
I-290 EASTBOUND**

SCALE: 1"=20' SHEET 11 OF 11 SHEETS STA. 342+30 TO STA. 348+30

F.A.I. RTE.	SECTION	COUNTY	TOTAL SHEETS	SHEET NO.
90/94/290	2013-011R	COOK	356	80
CONTRACT NO. 60W29				
ILLINOIS FED. AID PROJECT				