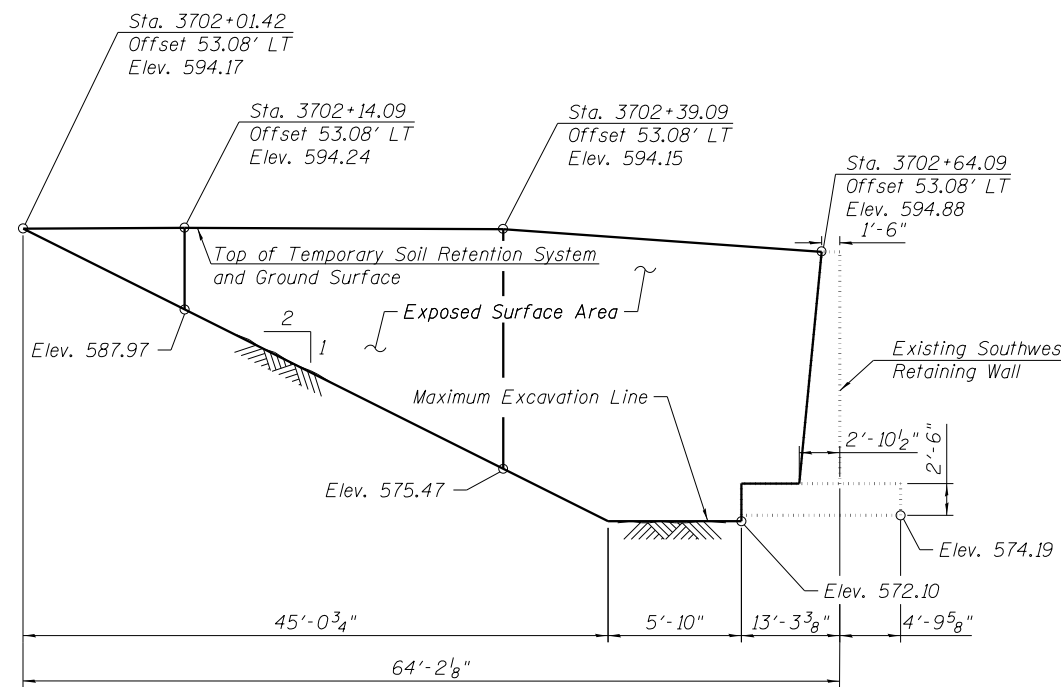


FOUNDATION LAYOUT

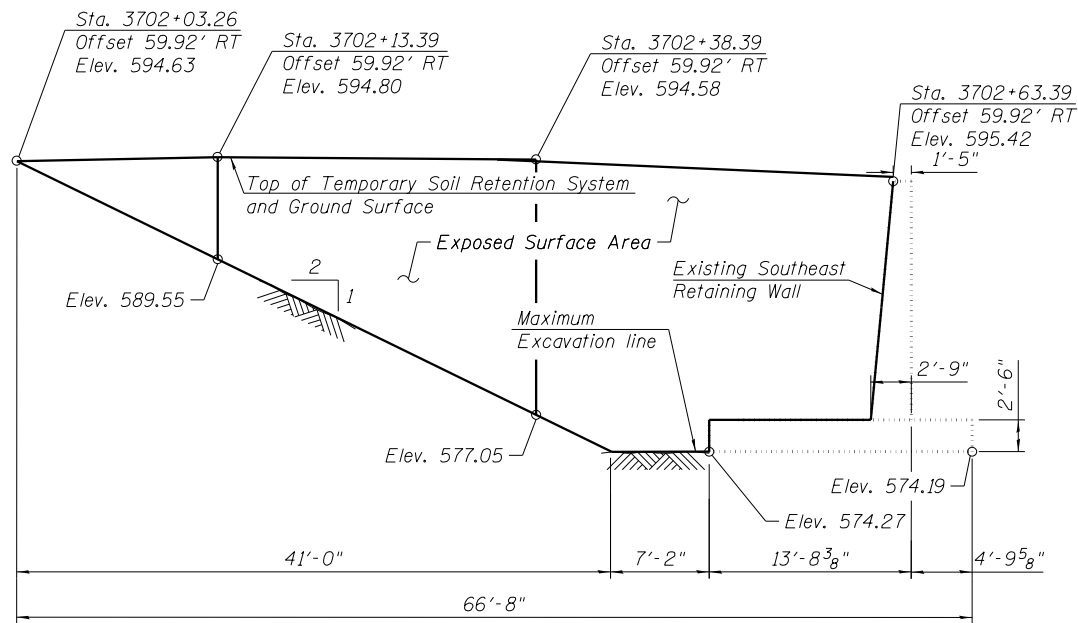
LEGEND:

- Combined Sewer →→→→→
- Storm Sewer →→→→→
- ITS Fiber Optic — FO — FO —
- Light Pole ○
- Soil Boring ⊕

Notes:
 Driving piles and temporary sheet piling is not allowed.
 A cantilevered sheet piling design does not appear feasible and additional members or other retention systems may be necessary. The Contractor shall submit a temporary soil retention system design including plan details and calculations for review and acceptance by the Engineer.
 See the Utility Plan on sheet 3 of 55 for existing utilities.
 The maximum allowable excavation slope is 1:2 (V:H).
 For additional Temporary Soil Retention System details see sheets 5 and 6 of 55.
 For Soil Retention System details see sheet 6 of 55.



TEMPORARY SOIL RETENTION SYSTEM NO. 1
(At South Abutment)



TEMPORARY SOIL RETENTION SYSTEM NO. 2
(At South Abutment)

BILL OF MATERIAL

Item	Unit	Quantity
Temporary Soil Retention System	Sq. Ft.	1608

11:01:31 PM 0161708-60W29-5004-SubStruct-Foundations.dgn



USER NAME = BAWItoft	DESIGNED JRM/KAH	REVISED
PLOT SCALE = 40:0.0046 ' / in.	CHECKED - MDS	REVISED
PLOT DATE = 10/28/2013	DRAWN - RLS	REVISED
	CHECKED - MDS	REVISED

STATE OF ILLINOIS
DEPARTMENT OF TRANSPORTATION

FOUNDATION LAYOUT
STRUCTURE NO. 016-1708
 SHEET NO. 4 OF 55 SHEETS

MUN	SECTION	COUNTY	TOTAL SHEETS	SHEET NO.
2090	2013-011R	COOK	356	136
CONTRACT NO.			60W29	
ILLINOIS FED. AID PROJECT				