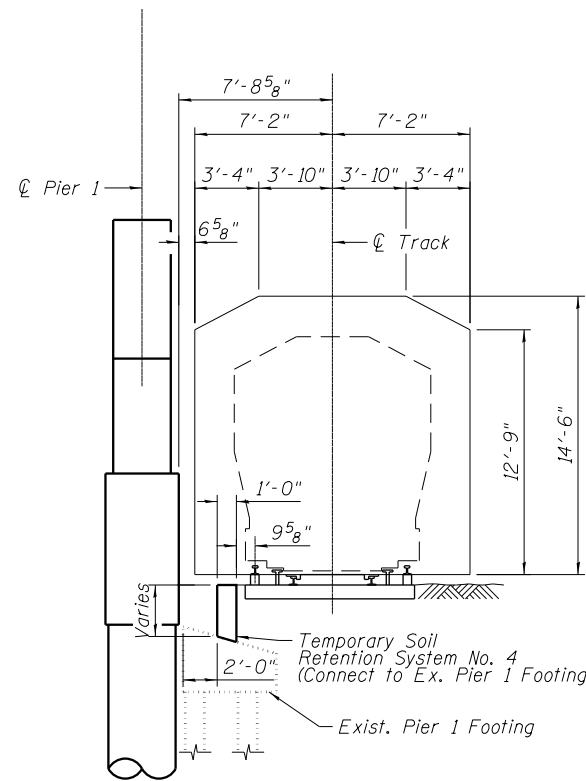
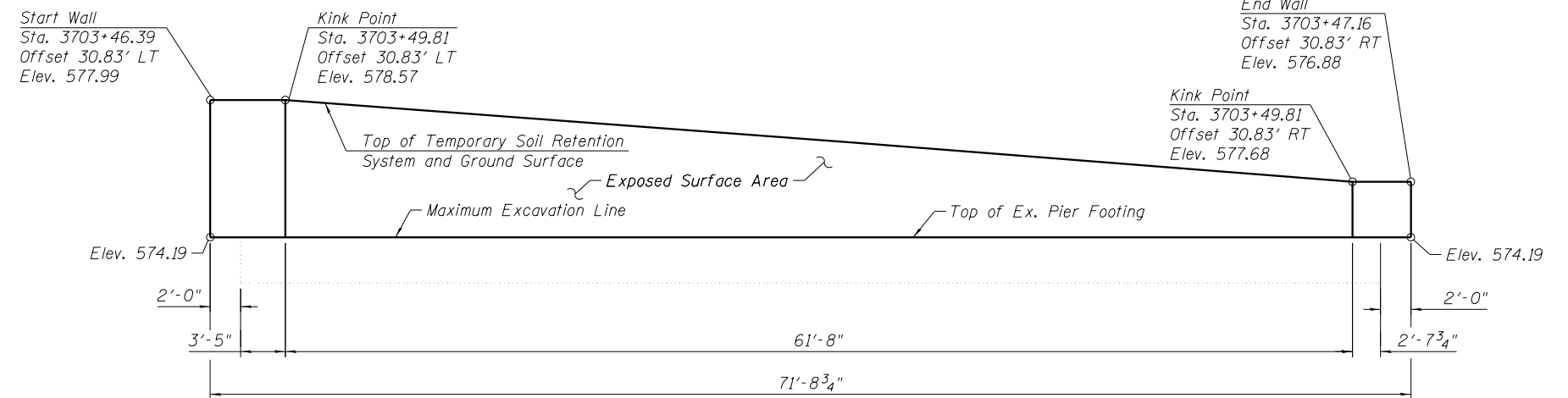


TEMPORARY SOIL RETENTION SYSTEM NO. 3
(At South Abutment)



SECTION THRU CTA TRACKS
(At Pier 1)



TEMPORARY SOIL RETENTION SYSTEM NO. 4
(At Pier 1)

Notes:
 Driving piles and temporary sheet piling is not allowed.
 A cantilevered sheet piling design does not appear feasible and additional members or other retention systems may be necessary. The Contractor shall submit a soil retention system design including plan details and calculations for review and acceptance by The Engineer.
 The maximum allowable excavation slope is 1:2 (V:H).
 CTA EB Blue Line is to be shutdown during installation of Temporary Soil Retention System No. 4. Closure to be coordinated with the CTA. See Special Provision for CTA Flagging and Coordination.

BILL OF MATERIAL

Item	Unit	Quantity
Temporary Soil Retention System	Sq. Ft.	902

11:01:32 PM 01/17/08-60W29-5005-Substruct-TempExc1.dgn



USER NAME = BAWIort	DESIGNED KAH	REVISED
PLOT SCALE = 10:8.0000 ' / in.	CHECKED MDS	REVISED
PLOT DATE = 10/28/2013	DRAWN AJP	REVISED
	CHECKED MDS	REVISED

STATE OF ILLINOIS
DEPARTMENT OF TRANSPORTATION

TEMPORARY SOIL RETENTION DETAILS 1
STRUCTURE NO. 016-1708

SHEET NO. 5 OF 55 SHEETS

MUN	SECTION	COUNTY	TOTAL SHEETS	SHEET NO.
2090	2013-011R	COOK	356	137
CONTRACT NO.			60W29	
ILLINOIS FED. AID PROJECT				