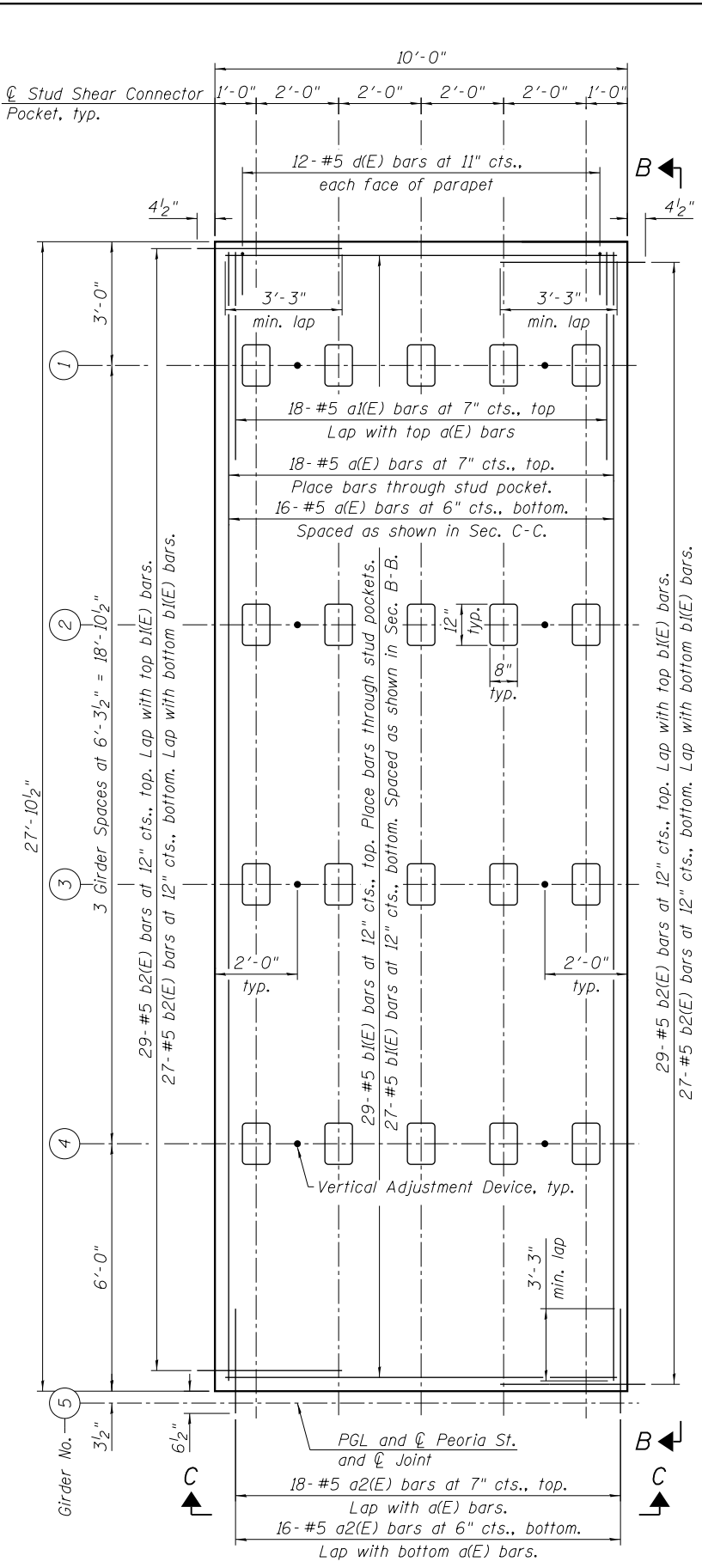


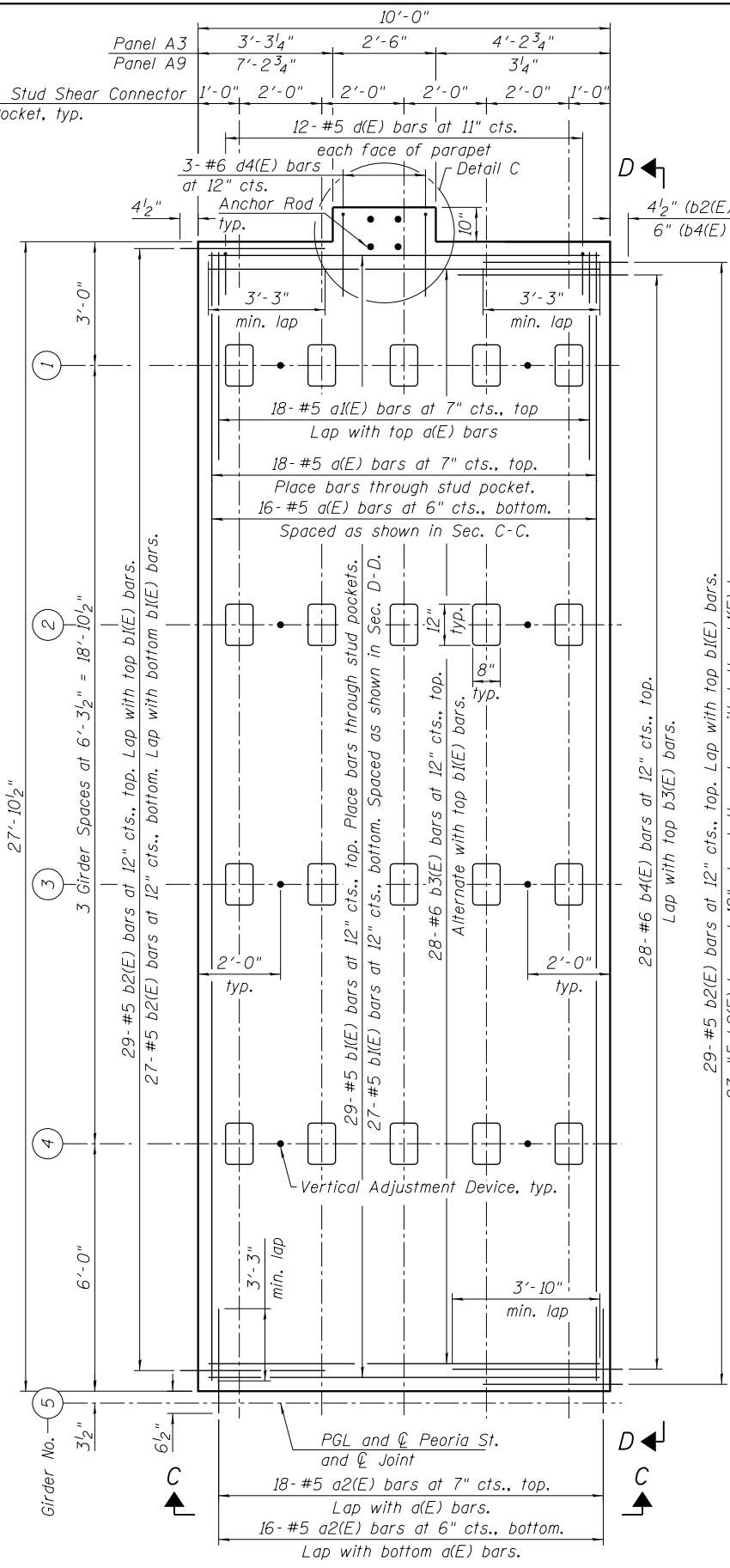
REINFORCING PLAN - DECK PANEL A1

(1 required)
Deck Panel A10 opposite hand (1 required)



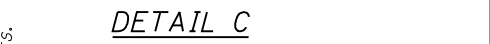
REINFORCING PLAN - DECK PANEL A2

(11 required)



REINFORCING PLAN - DECK PANEL A3

(1 required)
Deck Panel A9 opposite hand (1 required)



DETAIL C

Notes:
Provide a 3/4" min. gap between adjacent b2(E) or b4(E) dowels within UHPC joints. See Detail B on sheet 16 of 55.
For Sections A-A, B-B, C-C and D-D see Sheet 20 of 55.
For Section F-F, see Sheet 21 of 55.
See Sheet 20 of 55 for anchor rod details.

11/02/2013 PM 01:16:17 68-60W29-5017-Deck_PnlDet2.dgn



| | | |
|---------------------------------|--------------|---------|
| USER NAME = BAWIort | DESIGNED JRM | REVISED |
| | CHECKED WJC | REVISED |
| PLOT SCALE = 4x0.0000 '1' / in. | DRAWN RLS | REVISED |
| PLOT DATE = 10/28/2013 | CHECKED DL | REVISED |

**STATE OF ILLINOIS
DEPARTMENT OF TRANSPORTATION**

**PRECAST DECK PANEL DETAILS 2
STRUCTURE NO. 016-1708**

SHEET NO. 17 OF 55 SHEETS

| | | | | |
|---------------------------|-----------|--------|--------------|-----------|
| MUN | SECTION | COUNTY | TOTAL SHEETS | SHEET NO. |
| 2090 | 2013-011R | COOK | 356 | 149 |
| CONTRACT NO. | | | 60W29 | |
| ILLINOIS FED. AID PROJECT | | | | |