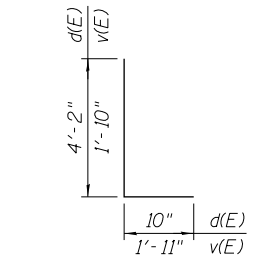
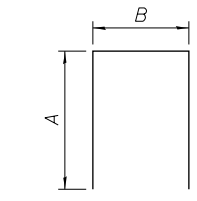


SECTION THROUGH WEST PARAPET
(Looking Up-Station, East Parapet similar, opposite hand)

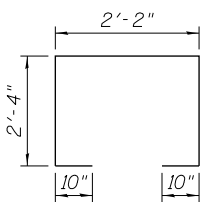


BAR d(E) and v(E)

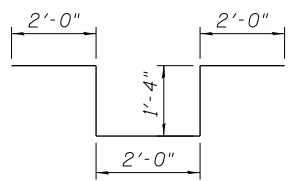


BARS d1(E), d2(E), s1(E) & u(E)

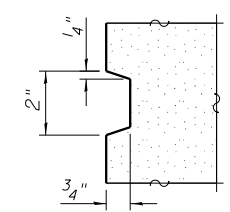
Bar	A	B
d1(E)	2'-5"	1'-1"
d2(E)	9"	11"
s1(E)	3'-2"	2'-0"
u(E)	1'-0"	8"



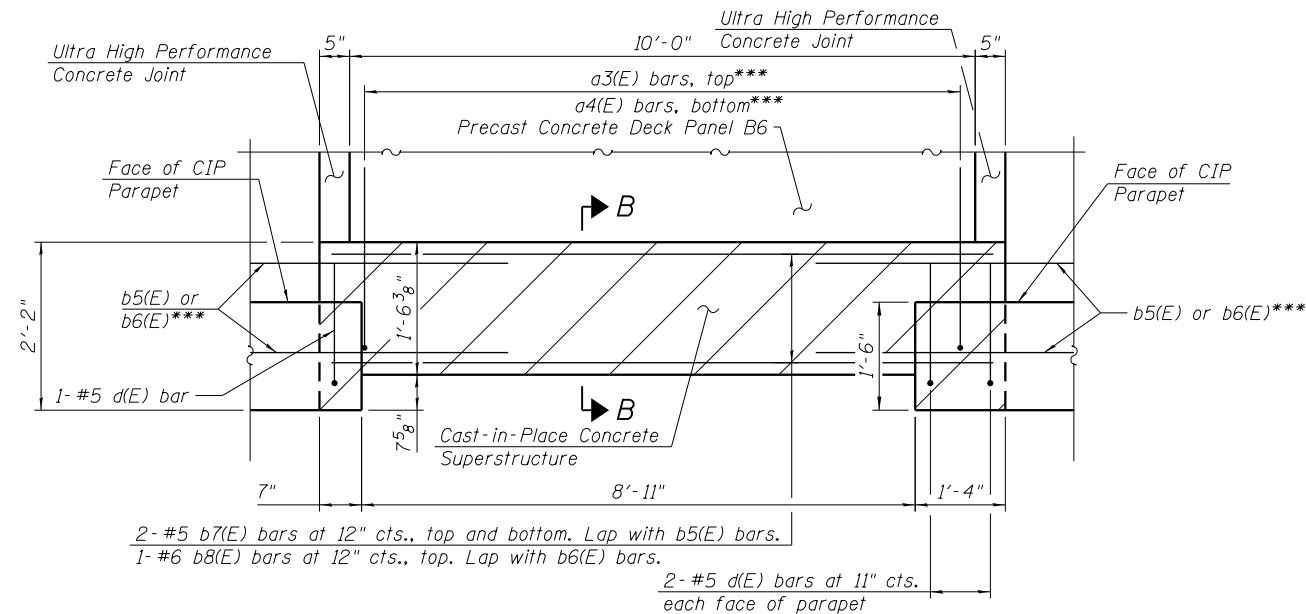
BAR s(E)



BARS d3(E)

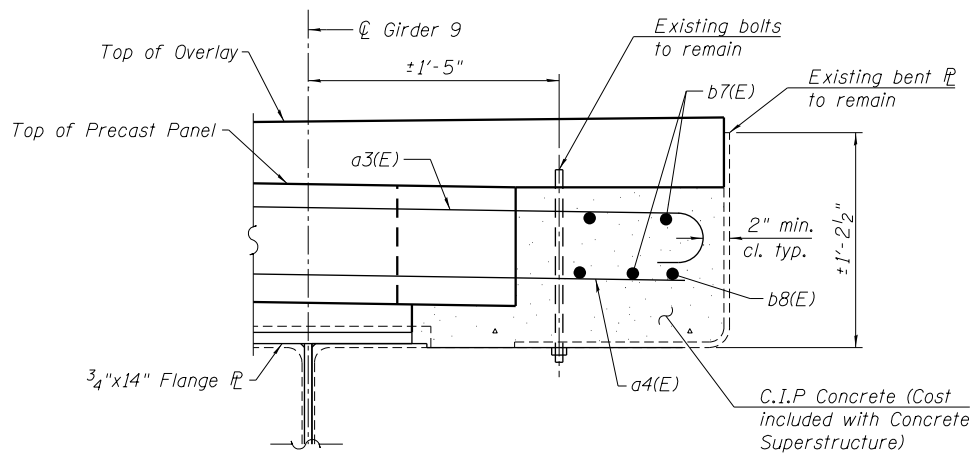


REVEAL DETAIL



DETAIL E
(At CTA Stairway)

*** Bars are included with Precast Deck Panels. See sheet 20 of 55 for Bill of Material.



SECTION B-B

BILL OF MATERIAL

Bar	No.	Size	Length	Shape
b7(E)	4	#5	10'-6"	—
b8(E)	1	#6	10'-6"	—
d(E)	6	#5	5'-0"	└
d1(E)	24	#5	5'-11"	└
d2(E)	106	#4	2'-5"	└
d3(E)	48	#6	8'-8"	└
d5(E)	52	#6	1'-6"	—
e(E)	20	#4	16'-11"	—
e1(E)	140	#4	19'-8"	—
e2(E)	40	#4	9'-8"	—
e3(E)	20	#4	8'-10"	—
e4(E)	10	#4	8'-7"	—
e5(E)	10	#4	14'-6"	—
e6(E)	10	#4	8'-8"	—
e7(E)	20	#4	13'-0"	—
e8(E)	10	#4	8'-8"	—
e9(E)	20	#4	17'-8"	—
e10(E)	10	#4	8'-3"	—
e11(E)	10	#4	8'-6"	—
e12(E)	32	#4	2'-2"	—
h(E)	24	#5	9'-4"	—
h1(E)	16	#5	4'-3"	—
h2(E)	12	#5	5'-2"	—
h3(E)	8	#5	3'-3"	—
h4(E)	12	#5	7'-10"	—
m(E)	16	#6	56'-0"	—
m1(E)	28	#6	10'-2"	—
m2(E)	8	#6	7'-11"	—
m3(E)	64	#6	5'-11"	—
m4(E)	16	#6	2'-8"	—
s(E)	112	#5	8'-6"	└
s1(E)	128	#5	8'-4"	└
u(E)	114	#5	2'-8"	└
v(E)	62	#5	3'-9"	└
v1(E)	24	#5	3'-0"	—
v2(E)	12	#5	2'-3"	—
Concrete Superstructure			Cu. Yd.	145.2
Protective Coat			Sq. Yd.	615
Reinforcement Bars, Epoxy Coated			Pound	10,200

MIN. BAR LAP
#6 bar = 3'-10"

Note:
See sheet 35 of 55 for additional CTA Stairway connection details.

11:04:04 PM 01/17/08-60W29-5023-SuperStruct-Detail2.dgn



USER NAME	DESIGNED	REVISION
BAW10r1	WJC	WJC
	JRM	JRM
	WJC	WJC
	JRM	JRM

STATE OF ILLINOIS
DEPARTMENT OF TRANSPORTATION

SUPERSTRUCTURE DETAILS 2
STRUCTURE NO. 016-1708

SHEET NO. 23 OF 55 SHEETS

MUN	SECTION	COUNTY	TOTAL SHEETS	SHEET NO.
2090	2013-011R	COOK	356	155
CONTRACT NO.			60W29	
ILLINOIS FED. AID PROJECT				