

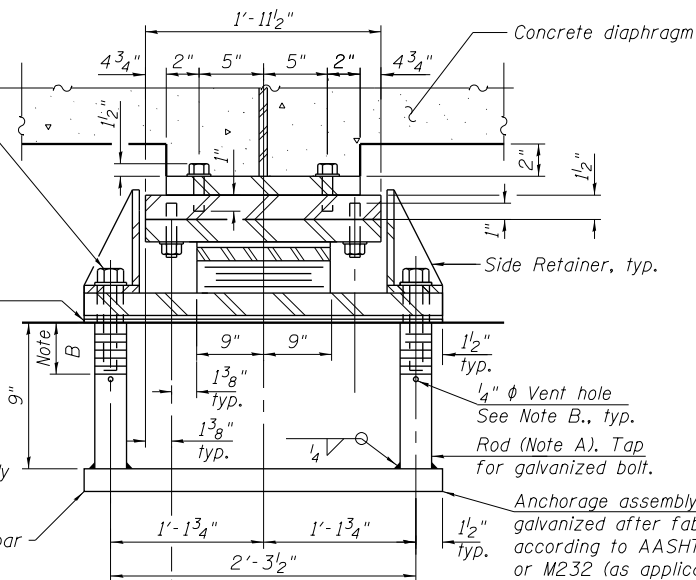
ELEVATION AT ABUT.
(Looking West)

$\frac{3}{4}$ " ϕ ASTM A325 bolt.
hot dip galvanized
per AASHTO M332.
Coat bolts with
anti-seize compound.
2" x 2" x $\frac{5}{16}$ " PL
washer under nut.
 $\frac{1}{4}$ " ϕ Hole in bott PL

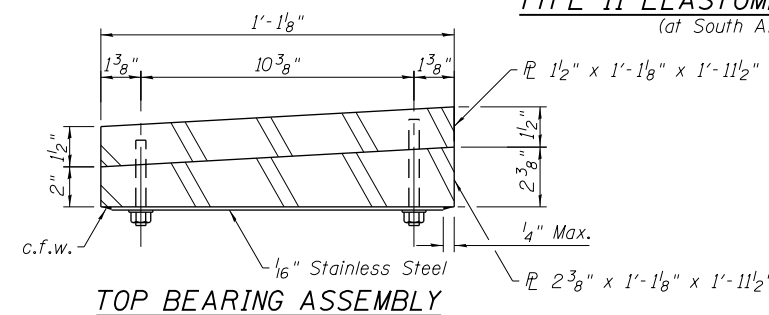
Fill PL for crown, shim
PL and $\frac{1}{8}$ " elastomeric
neoprene leveling pad
according to the
material properties of
Article 1052.02 of the
Standard Specifications.
Cost of pad included with
Elastomeric Bearing Assembly
Type II

ϕ 2- $\frac{3}{4}$ " ϕ H.S. Bolts w/lock washers (Typ. ea. side)
(Coat bolts with anti-seize compound)
Tapped holes in top PL; $\frac{7}{8}$ " ϕ holes in bearing PL

TYPE II ELASTOMERIC EXP. BRG.
(at South Abutment)



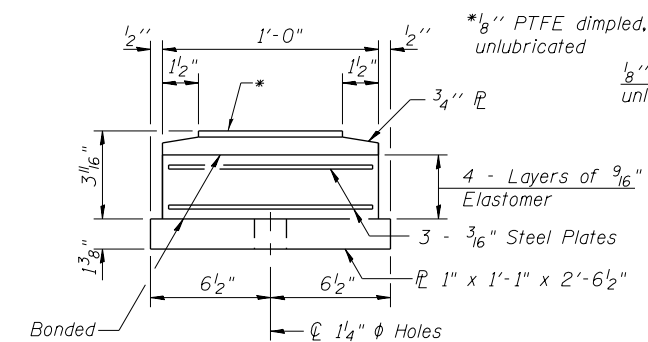
SECTION A-A



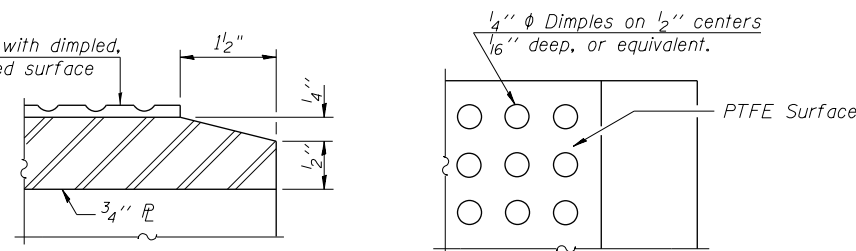
TOP BEARING ASSEMBLY

Note A:
AASHTO M270 G50 or G50W or similar material.
Rod dia. = $\frac{1}{2}$ " ϕ

Note B:
Bolt engagement $\frac{1}{4}$ " min., $1\frac{5}{8}$ " max., allowing up to $\frac{3}{8}$ "
adjustment shims. Tap full threads in rod $1\frac{3}{4}$ " deep.
Provide $\frac{1}{4}$ " ϕ galvanizing vent hole below full thread.

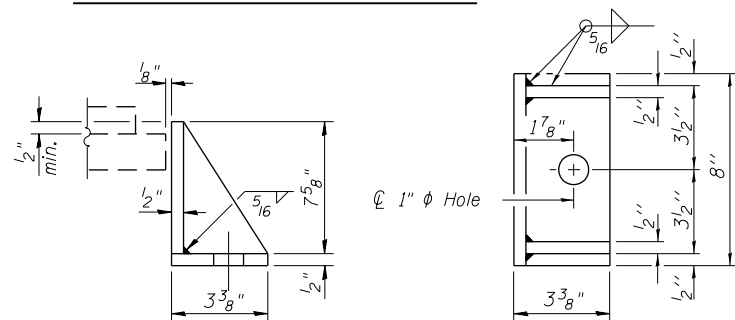


BOTTOM BEARING ASSEMBLY



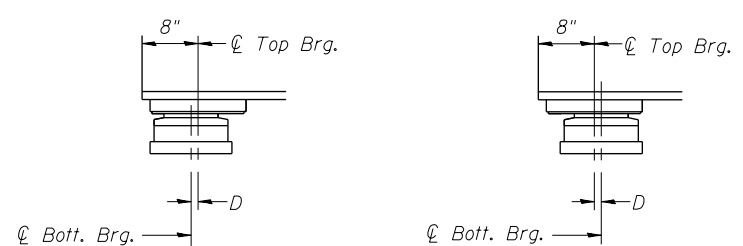
SECTION THRU PTFE

PLAN-PTFE SURFACE



SIDE RETAINER

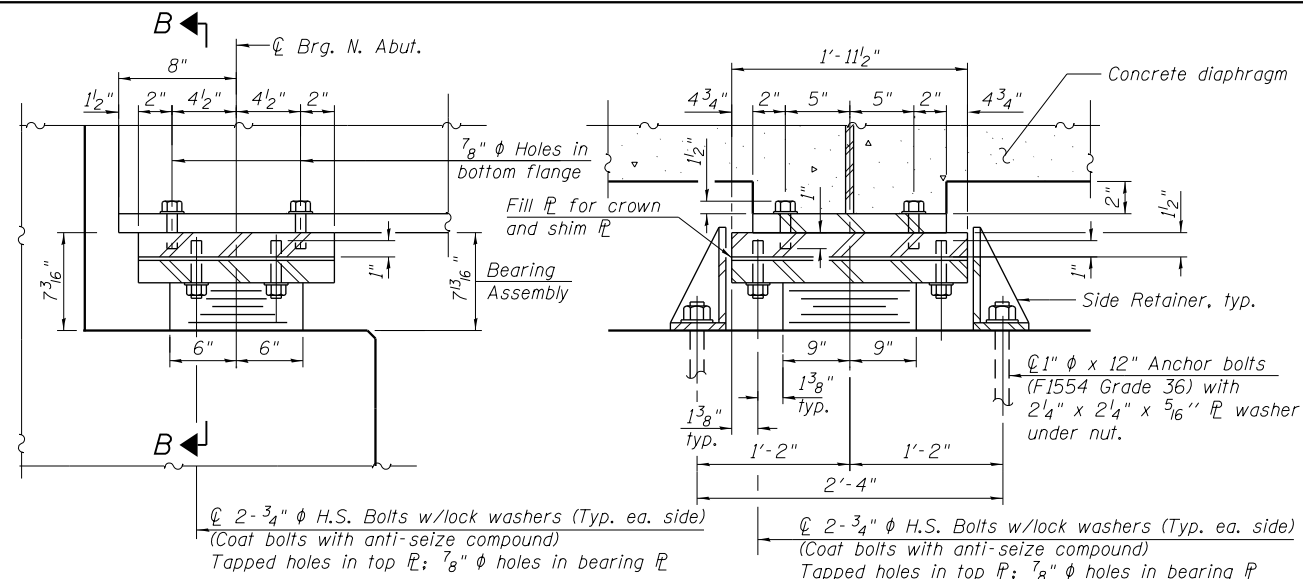
Equivalent rolled angle with stiffeners
will be allowed in lieu of welded plates.



BELOW 50°F. (Move bott. brg. away from fixed brg.)
ABOVE 50°F. (Move bott. brg. toward fixed brg.)

SETTING ANCHOR BOLTS AT EXP. BRG.

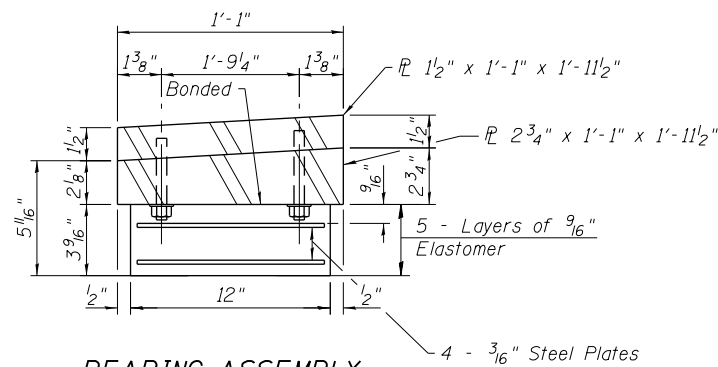
D = $\frac{1}{8}$ " per each 100' of expansion for every 15° temp.
change from the normal temp. of 50°F.



ELEVATION AT ABUT.
(Looking East)

SECTION B-B

TYPE I ELASTOMERIC EXP. BRG.
(at North Abutment)



BEARING ASSEMBLY

Notes:
Anchor bolts shall be ASTM F1554 all-thread (or an
Engineer-approved alternate material) of the grade(s)
and diameter(s) specified. The corresponding specified
grade of AASHTO M314 anchor bolts may be used
in lieu of ASTM F1554.

Anchor bolts for side retainers for Type I bearings may
be cast in place or installed in holes drilled before or
after members are in place.

Anchor bolts for Type II bearings shall be placed in
holes drilled in the concrete through holes in the bottom
bearing plate after members are in place. Side retainers
shall be placed after bolts are installed.

Drilled and set anchor bolts shall be installed according
to Article 521.06 of the Standard Specifications.

Side retainers and other steel members required for
the elastomeric bearing assembly shall be included in the
cost of Elastomeric Bearing Assembly, Type I or
Elastomeric Bearing Assembly, Type II.

The $\frac{1}{8}$ " PTFE sheet shall be bonded directly to the
top steel plate with a two-component, medium viscosity
epoxy resin, conforming to the requirements of the
Federal Specification MMM-A-134, Type I. The bond
agent shall be applied on the full area of the contact
surfaces.

Bonding of $\frac{1}{8}$ " PTFE sheet during vulcanizing process
will be permitted provided the process and method of
adjusting assembly height is approved by the Engineer.

Two $\frac{1}{8}$ " adjusting shims shall be provided for each
bearing in addition to all other plates or shims and placed
as shown on bearing details.

All (embedded and separate) bearing plates, side
retainers, anchor bolts, nuts and washers shall be
galvanized according to ASTM M111 or M232 as applicable.

BILL OF MATERIAL

Item	Unit	Total
Elastomeric Bearing Assembly, Type I	Each	9
Elastomeric Bearing Assembly, Type II	Each	9
Anchor Bolts, 1" ϕ	Each	18

11:04:34 PM 01/17/08-60W29-5036-Bearing-AbutDetails.dgn



USER NAME = BAWIort	DESIGNED = JRM	REVISED
	CHECKED = WJC	REVISED
PLOT SCALE = 0x2.0000 '1' / in.	DRAWN = MTS	REVISED
PLOT DATE = 10/28/2013	CHECKED = WJC	REVISED

STATE OF ILLINOIS
DEPARTMENT OF TRANSPORTATION

ABUTMENT BEARING DETAILS
STRUCTURE NO. 016-1708

SHEET NO. 36 OF 55 SHEETS

MUN	SECTION	COUNTY	TOTAL SHEETS	SHEET NO.
2090	2013-011R	COOK	356	168
CONTRACT NO.			60W29	
ILLINOIS FED. AID PROJECT				