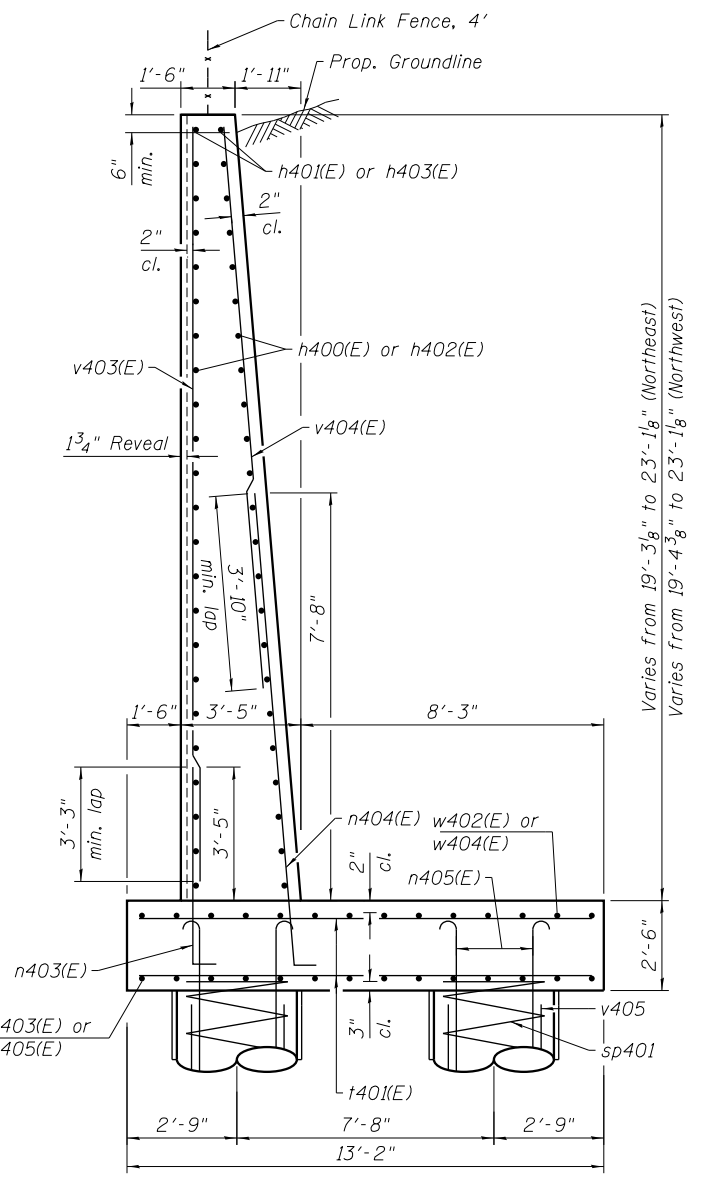
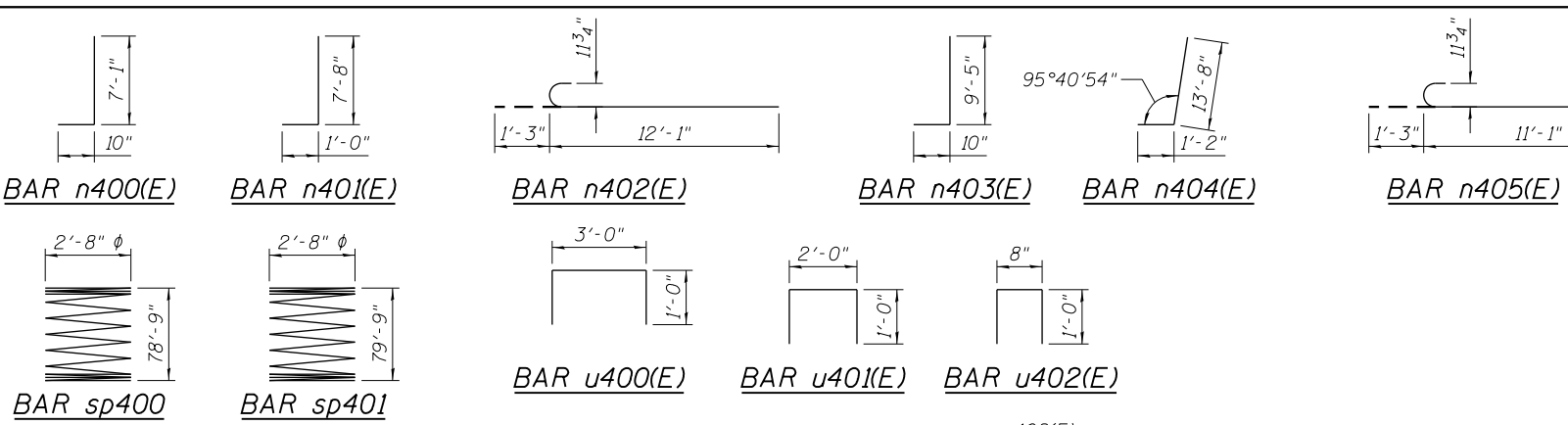
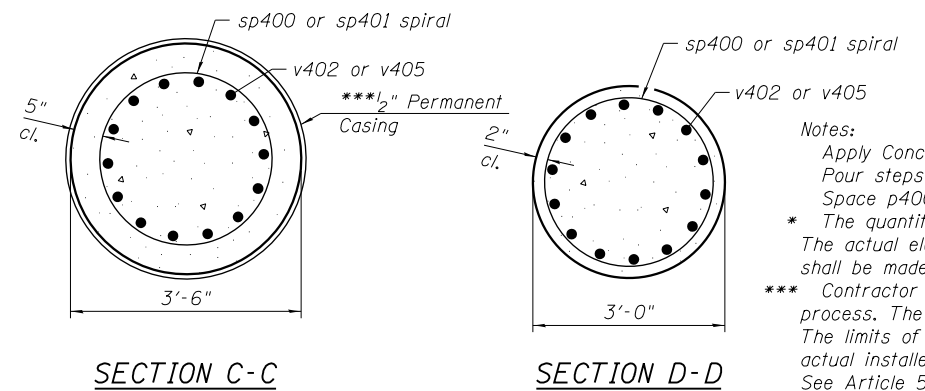


DRILLED SHAFT ELEVATION

Minimum Bar Laps	
Bar	Lap
#4	2'-7"
#5	3'-3"
#6	3'-10"
#7	5'-2"
#9	8'-7"
#6 Spiral	3'-0"



SECTION B-B

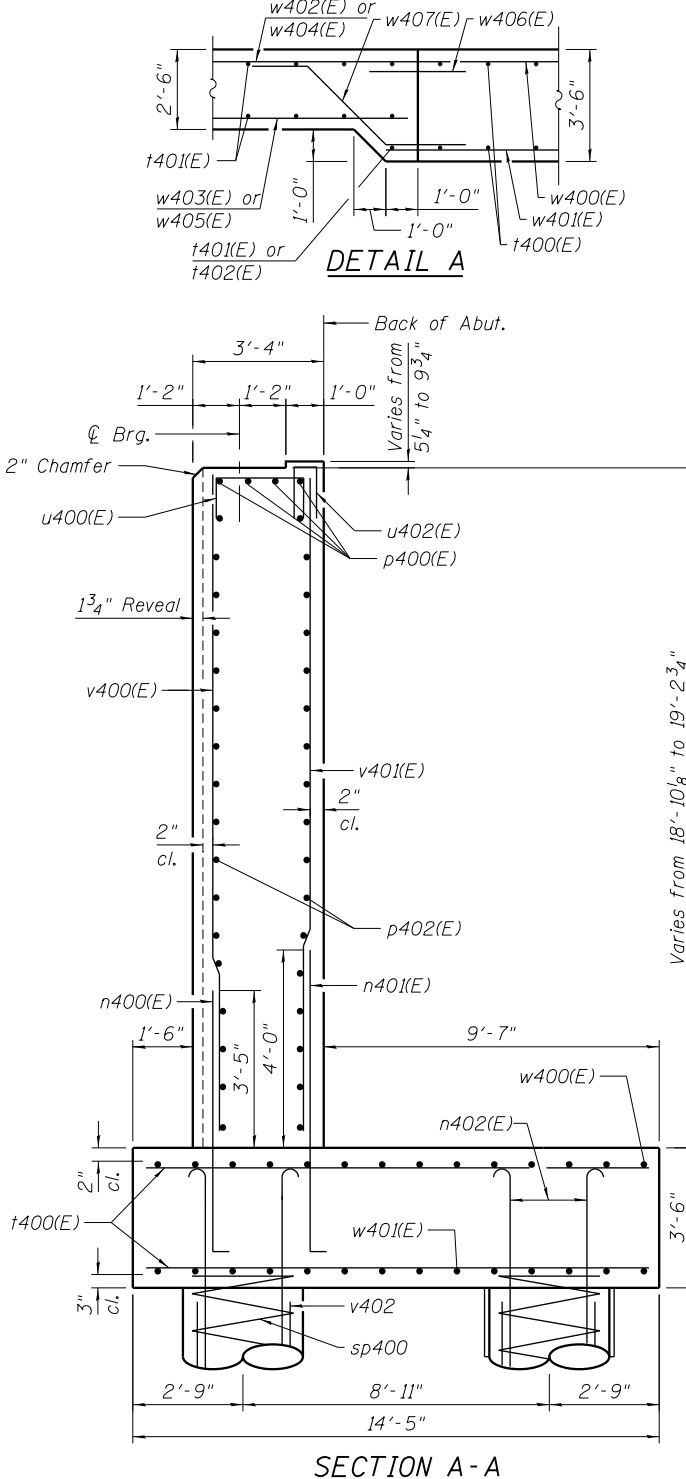
Notes:

Apply Concrete Sealer to all exposed concrete surfaces of the abutment and wingwalls. Pour steps monolithically with cap.

Space p400(E), u400(E) and u401(E) bars to miss anchor bolts.

The quantities and detailing are based on the estimated elevations shown on the plans. The actual elevations may differ at each shaft and corresponding adjustments shall be made to the drilled shaft and reinforcement quantities and payment limits.

*** Contractor may need to increase the casing thickness to withstand the installation process. The Estimated Top of Rock/Bottom of Permanent Casing Elevation is shown. The limits of the casing shall be adjusted as necessary, and as approved, such that the actual installed casing length extends to the as-encountered top of rock at each shaft. See Article 516.06(d) of the Standard Specifications.



SECTION A-A

BILL OF MATERIAL

Bar	No.	Size	Length	Shape
h400(E)	40	#5	24'-8"	—
h401(E)	8	#5	24'-11"	—
h402(E)	38	#5	28'-8"	—
h403(E)	8	#5	28'-11"	—
h404(E)	4	#5	2'-0"	—
n400(E)	57	#5	7'-11"	L
n401(E)	113	#6	8'-8"	L
n402(E)	140	#9	13'-4"	C
n403(E)	56	#5	10'-3"	L
n404(E)	110	#7	14'-10"	L
n405(E)	112	#9	12'-4"	C
p400(E)	4	#6	56'-0"	—
p401(E)	3	#6	5'-11"	—
p402(E)	40	#5	56'-0"	—
sp400	10	#6	78'-9"	—
sp401	8	#6	79'-9"	—
t400(E)	226	#6	14'-1"	—
t401(E)	223	#7	12'-10"	—
t402(E)	7	#7	12'-11"	—
u400(E)	57	#6	5'-0"	□
u401(E)	7	#6	4'-0"	□
u402(E)	57	#5	2'-8"	□
v400(E)	57	#5	18'-6"	—
v401(E)	113	#6	18'-6"	—
v402	280	#9	42'-1"	—
v403(E)	56	#5	19'-0"	—
v404(E)	110	#6	15'-4"	—
v405	224	#9	42'-7"	—
v406(E)	6	#5	1'-7"	—
w400(E)	14	#5	56'-0"	—
w401(E)	14	#5	58'-0"	—
w402(E)	14	#5	24'-8"	—
w403(E)	27	#9	24'-8"	—
w404(E)	14	#5	28'-8"	—
w405(E)	32	#9	28'-8"	—
w406(E)	28	#5	4'-4"	—
w407(E)	28	#5	8'-7"	—
Structure Excavation		Cu. Yd.	1638	
Concrete Structures		Cu. Yd.	411.1	
Reinforcement Bars		Pound	108,440	
Reinforcement Bars, Epoxy Coated		Pound	49,790	
Permanent Casing		Foot	763	
Drilled Shaft in Soil		Cu. Yd.	488.3	
Drilled Shaft in Rock		Cu. Yd.	14.3	
Concrete Sealer		Sq. Ft.	2062	
Geocomposite Wall Drain		Sq. Yd.	254	
Granular Backfill for Structures		Cu. Yd.	339	

Bars indicated thus, 1x15-#5 etc., indicates 1 line of bars with 15 lengths per line.

** Length is height of spiral.

11:04:46 PM 01/17/08 60W29-5042-Abutment_NorthDetails1.dgn



USER NAME = BAWItoft	DESIGNED = JRM	REVISOR =
CHECKED = SAS	REVISOR =	REVISOR =
PLOT SCALE = 0x2.0000 '1' / 1in.	DRAWN = RLS	REVISOR =
PLOT DATE = 10/28/2013	CHECKED = MDS	REVISOR =

STATE OF ILLINOIS
DEPARTMENT OF TRANSPORTATION

NORTH ABUTMENT DETAILS 1
STRUCTURE NO. 016-1708
SHEET NO. 42 OF 55 SHEETS

MUN	SECTION	COUNTY	TOTAL SHEETS	SHEET NO.
2090	2013-011R	COOK	356	174
CONTRACT NO. 60W29			ILLINOIS FED. AID PROJECT	