

**NORTH ABUTMENT ELEVATION - ARCHITECTURAL DETAILS**

(Looking North)

Note:  
The 3" x 1/2" reveal will not be paid separately and shall be included in the cost of the pay item "Concrete Structures".

Fabric Reinforced Elastomeric Mat according to Section 1028 of the Std. Specs. Fabric mat shall be 24" wide and attached full width and vertically at edges to the abutment cap with a 3/8" x 5" steel plate and 1/2" φ studs with nuts and washers at 12" cts. See Fig. 3.8.4-2. Cost included with Concrete Superstructures.

2" PJF (per Article 1051.09 of the Standard Specifications) full width and vertically at edges bonded to abutment cap with suitable adhesive as recommended by supplier. See Fig. 3.8.4-2.

Over excavation beyond the limits of structure excavation. This area not measured for payment.

Granular Backfill For Structures  
Geocomposite Wall Drain

Structure Excavation

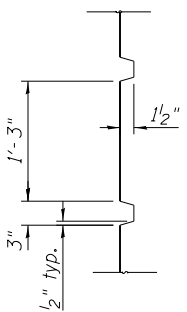
\*Geotechnical Filter Fabric For French Drains

\*Drainage Aggregate

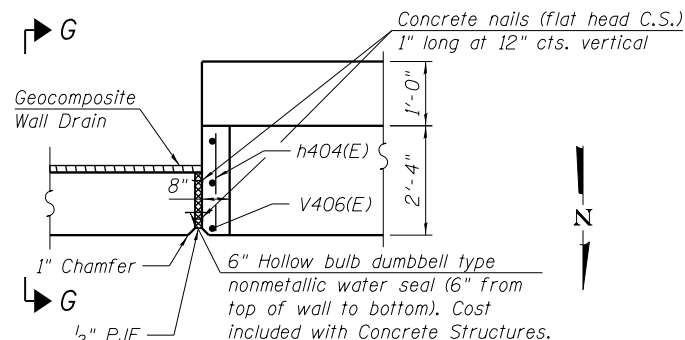
\*4" φ Perforated pipe drain  
\*Included in the cost of Pipe Underdrains for Structures 4".

**SECTION THRU ABUTMENT**

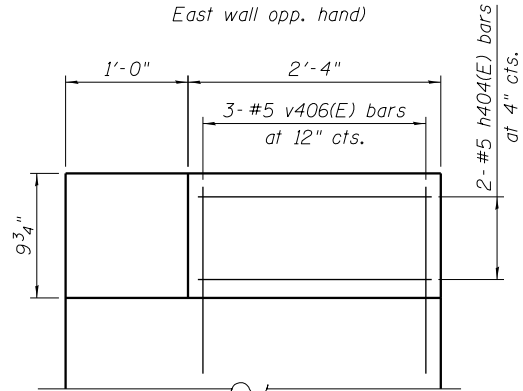
All drainage system components shall extend to 2'-0" from the end of each wingwall except an outlet pipe shall extend until intersecting with the side slopes. The pipes shall drain into concrete headwalls. (See Article 601.05 of the Standard Specifications and Highway Standard 601101).



**DETAIL C**  
(Typical Reveal Detail)



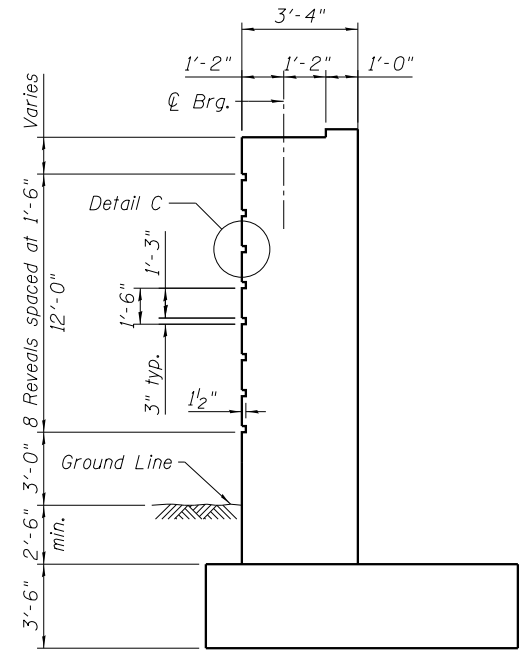
**DETAIL B**  
(West Wall shown, East wall opp. hand)



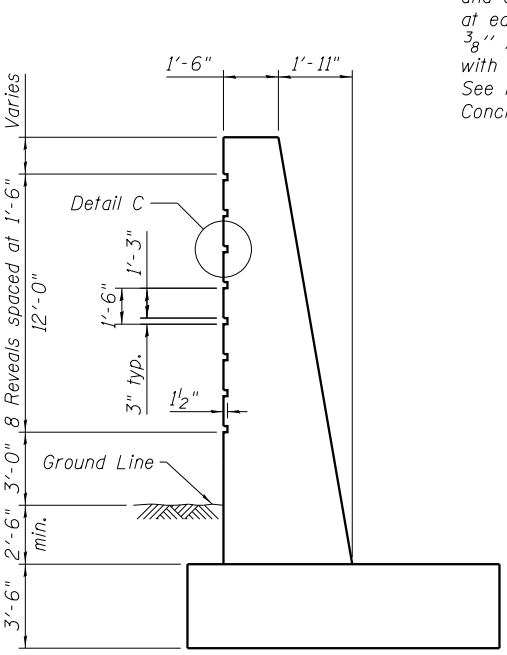
**SECTION G-G**

**BILL OF MATERIAL**

Item	Unit	Total
Pipe Underdrains for Structures 4"	Foot	115



**SECTION E-E**



**SECTION F-F**

11:04:49 PM 01/17/08 60W29-5043-Abutment\_NorthDetails2.dgn



USER NAME = BAWIort	DESIGNED = JRM	REVISED
CHECKED = SAS	REVISIONS	
PLOT SCALE = 0x2.0000 '1" / in.	DRAWN = RLS	REVISED
PLOT DATE = 10/28/2013	CHECKED = MDS	REVISED

**STATE OF ILLINOIS  
DEPARTMENT OF TRANSPORTATION**

**NORTH ABUTMENT DETAILS 2  
STRUCTURE NO. 016-1708**

SHEET NO. 43 OF 55 SHEETS

MUN	SECTION	COUNTY	TOTAL SHEETS	SHEET NO.
2090	2013-011R	COOK	356	175
CONTRACT NO.			60W29	
ILLINOIS FED. AID PROJECT				