

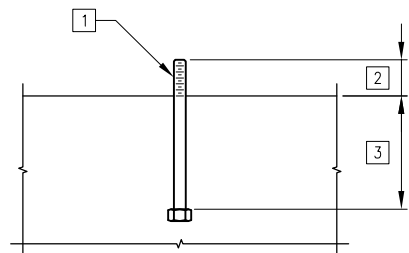
**KEYED NOTES:**

- 1. (9) #5 TOP  $\square$  BARS EQUALLY SPACED.
- 2. (9) #5 BOT  $\sqsubset$  BARS EQUALLY SPACED.
- 3. (4) #6 BOT  $\sqsubset$  BARS EQUALLY SPACED.
- 4. (4) #6 TOP  $\square$  BARS EQUALLY SPACED.
- 5.  $\odot$  PILE CAP AND DRILLED SHAFT.
- 6. DRILLED SHAFT.
- 7.  $\odot$  PILE CAP AND DRILLED SHAFT.
- 8. 36" DEEP PC-2 PILE CAP.
- 9. EXTEND (3) #9 WITH STD HOOK INTO PILE CAP AT EACH SIDE.
- 10. (18) #9, TYPICAL DRILLED SHAFT VERTICAL REINFORCING.

**PILE CAP PC-2 PLAN AND SECTION**

3/4" = 1'-0"

B1



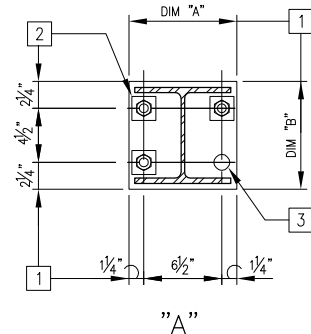
**DETAIL KEYED NOTES:**

- 1. HEAVY HEX HEADED, ASTM F1554 ANCHOR ROD.
- 2. PROJECTION AS REQUIRED.
- 3. EMBED PER BASE PLATE DETAILS.
- 4. J-TYPE AND L-TYPE ANCHOR RODS ARE PROHIBITED FROM USE.

**B2 ANCHOR ROD DETAIL**

1-1/2" = 1'-0"

BASE PLATE SCHEDULE										
MARK	SIZE AxB (INxIN)	THICK (IN)	NUMBER BOLTS "A" SIDE	NUMBER BOLTS "B" SIDE	BOLT DIAMETER (IN)	BOLT EDGE DISTANCE (IN)	BOLT EMBED LENGTH (IN)	BOLT HOLE DIAMETER (IN)	WASHER SIZE (INxIN)	WASHER THICK (IN)
A	9x9	3/4	2	2	3/4	1 1/4	20	1 5/16	2x2	1/4



**DETAIL KEYED NOTES:**

- 1. BOLT GAUGE AND EDGE DISTANCE.
- 2. ADDITIONAL SQUARE PLATE WASHER AT EACH BOLT. SEE SCHEDULE FOR SIZE AND THICKNESS.
- 3. SEE SCHEDULE FOR OVER SIZED HOLE DIAMETER.

**C2 TYPICAL BASE PLATE DETAIL AND SCHEDULE**

1-1/2" = 1'-0"



USER NAME = MAC	DESIGNED — KLT	REVISED — — —
PLOT SCALE =	CHECKED — AFK	REVISED — — —
PLOT DATE = 10/28/13	DRAWN — MAC	REVISED — — —
	CHECKED — AFK	REVISED — — —

**STATE OF ILLINOIS  
DEPARTMENT OF TRANSPORTATION**

**PEORIA STREET STATION  
DRILLED SHAFT AND PILE CAP DETAILS**

SHEET NO. S-003 OF 117 SHEETS

PRELIMINARY NOT FOR CONSTRUCTION

MUN	SECTION	COUNTY	TOTAL SHEETS	SHEET NO.
2090	2013-011R	COOK	356	194
ILLINOIS FED. AID PROJECT			CONTRACT NO. 60W29	
FED. AID PROJECT				