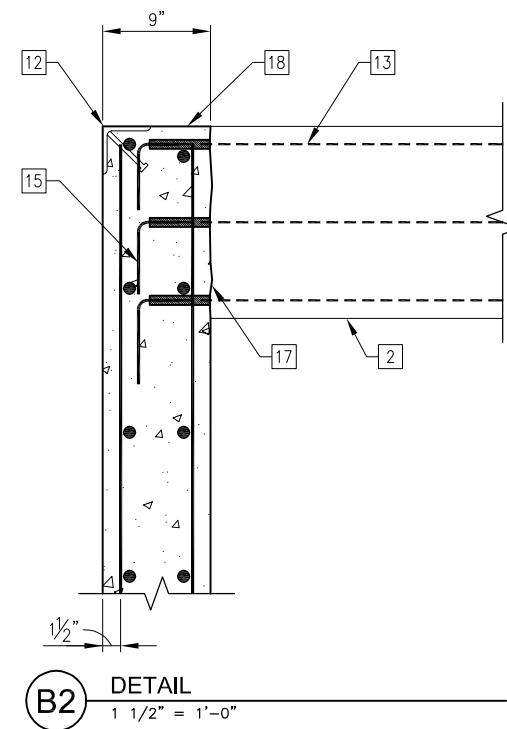


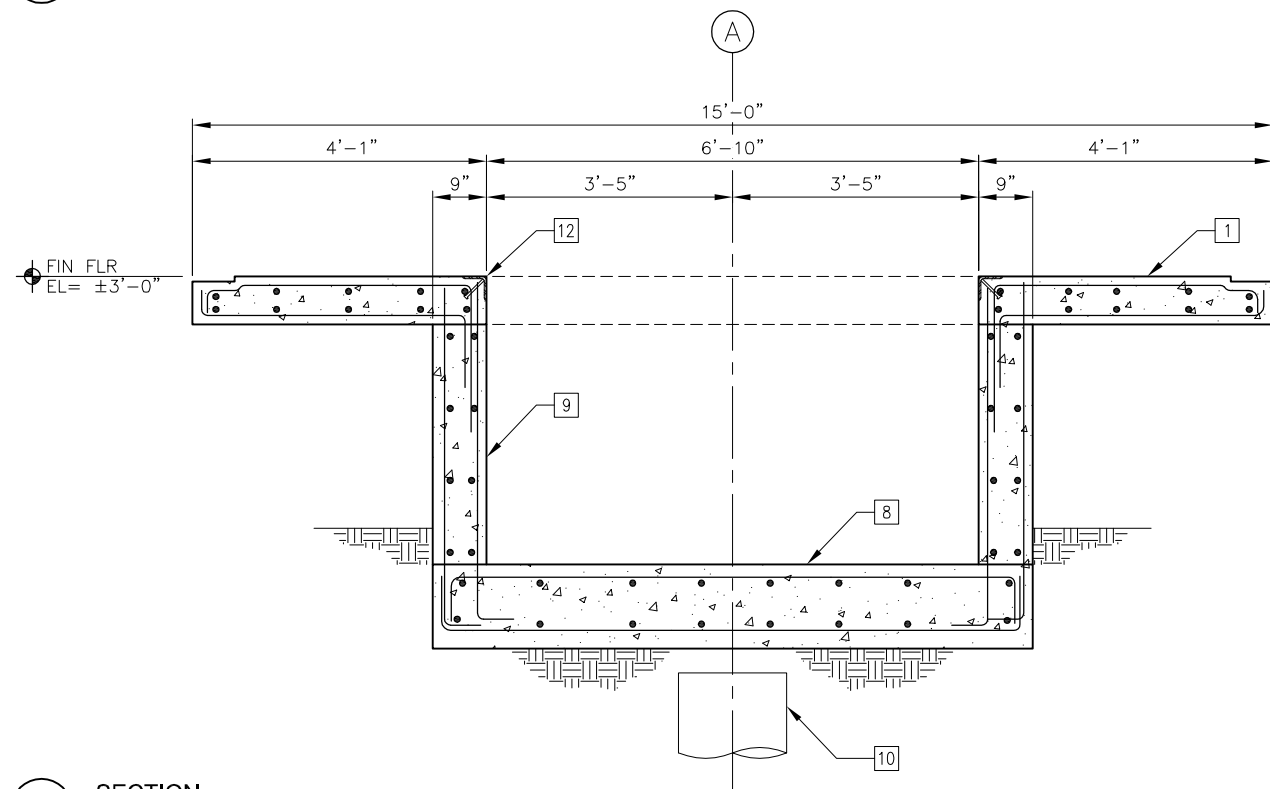
**B1 SECTION**  
3/4" = 1'-0"



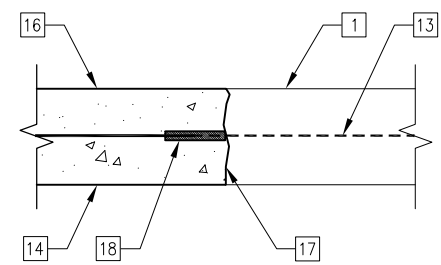
**B2 DETAIL**  
1 1/2" = 1'-0"

**SHEET NOTES:**  
1. ALL EXISTING DIMENSIONS ARE SHOWN FOR REFERENCE ONLY AND SHALL BE VERIFIED PRIOR TO COMMENCEMENT OF CONSTRUCTION TO DETERMINE ANY CRITICAL DIMENSIONS.

- KEYED NOTES:**
- EXISTING PLATFORM SLAB.
  - EXISTING LONGITUDINAL PLATFORM BEAM.
  - NEW WF STEEL COLUMN, SEE PLAN FOR SIZE.
  - INFILL SLAB.
  - INFILL CONCRETE.
  - P-2 PILE CAP.
  - DRILLED SHAFT.
  - ELEVATOR MAT SLAB. REINF. W/ #6 AT 12" O.C., EA. WAY, TOP AND BOTTOM.
  - 9" THICK ELEVATOR PIT WALL. REINF. W/ #5 AT 12" O.C., EA. WAY, EA. SIDE.
  - EXISTING DRILLED SHAFT. REMOVE TO 3" BELOW BOTTOM OF NEW ELEVATOR MAT SLAB.
  - NEW 8" ALUMINUM POST, EACH SIDE OF PLATFORM.
  - L4x4x3/8 CONTINUOUS WITH 3/8"Øx4" HCA AT 12" O.C.
  - EXISTING SLAB OR BEAM REINF. EXPOSE SUFFICIENTLY TO INSTALL MECHANICAL SPLICE.
  - PROVIDE REINFORCING TO MATCH EXISTING SLAB REINFORCING.
  - SPLICE EXISTING BEAM REINFORCING AND PROVIDE STD. HOOK.
  - NEW 8" THICK CONCRETE PLATFORM SLAB.
  - ROUGHEN EXISTING CONCRETE TO 1/4" AMPLITUDE AND APPLY CONCRETE BONDING AGENT IN ACCORDANCE WITH THE MANUFACTURER'S CRITERIA PRIOR TO NEW CONCRETE PLACEMENT.
  - PROVIDE MECHANICAL REINF. SPLICE AT ALL EXISTING REINFORCING.

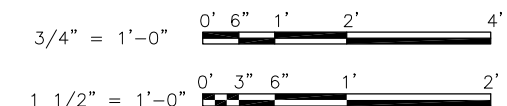


**A1 SECTION**  
3/4" = 1'-0"



**A2 DETAIL**  
1 1/2" = 1'-0"

**GRAPHIC SCALES**



PRELIMINARY NOT FOR CONSTRUCTION

	USER NAME = MAC	DESIGNED — KLT	REVISED — — —	<b>STATE OF ILLINOIS</b> <b>DEPARTMENT OF TRANSPORTATION</b>	<b>PEORIA STREET STATION</b> <b>FOUNDATION SECTIONS AND DETAILS</b>	MUN	SECTION	COUNTY	TOTAL SHEETS	SHEET NO.
	PLOT SCALE =	CHECKED — AFK	REVISED — — —			2090	2013-011R	COOK	356	207
	PLOT DATE = 10/28/13	DRAWN — MAC	REVISED — — —			CONTRACT NO. 60W29			ILLINOIS	FED. AID PROJECT