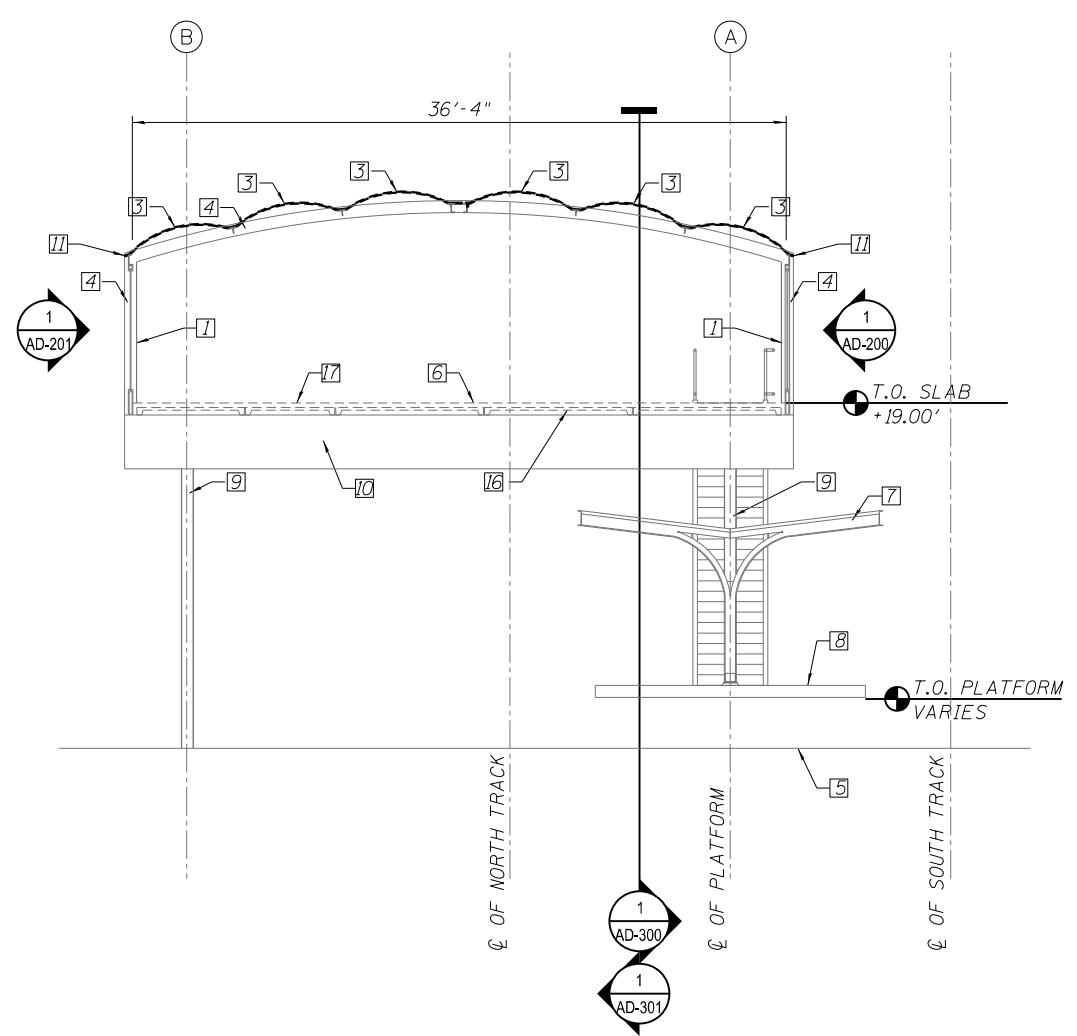
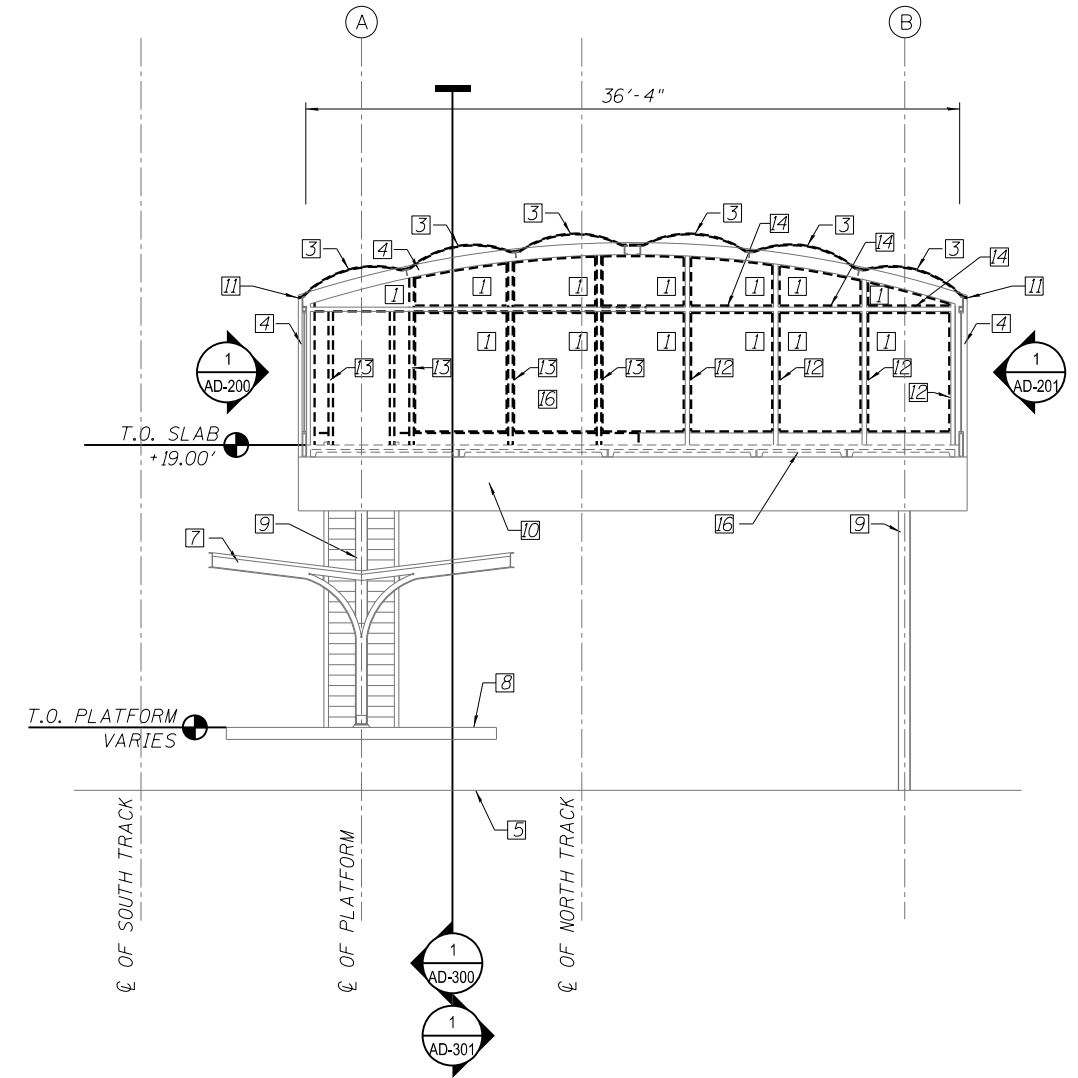


- KEY NOTES:
1. REMOVE GLAZING, GLAZING STOPS AND SCREWS.
 2. NOT USED.
 3. REMOVE SKYLIGHT UNIT IN ITS ENTIRETY.
 4. EXISTING STEEL TUBE STRUCTURE TO REMAIN.
 5. FINISH GRADE.
 6. FINISH FLOOR.
 7. PLATFORM CANOPY.
 8. PLATFORM LEVEL.
 9. EXISTING STATION COLUMN TO REMAIN
 10. EXISTING STRUCTURAL STEEL BEAM TO REMAIN
 11. EXISTING STRUCTURAL FRAMING TO REMAIN, TYP.
 12. EXISTING 3" X 3" STRUCTURAL COLUMN TO REMAIN, TYP.
 13. REMOVE 3" X 3" STRUCTURAL COLUMN
 14. EXISTING 3" X 3" STRUCTURAL BEAM TO REMAIN
 15. NOT USED.
 16. EXISTING PRECAST CONCRETE PLANK TO REMAIN, TYP.
 17. REMOVE EXISTING CONCRETE TOPPING SLAB WHERE INDICATED ON DEMOLITION PLAN 23. PROTECT EXISTING PRECAST CONCRETE PLANK, TO REMAIN.



1 STATION SECTION LOOKING EAST
 SCALE: 3/16" = 1'-0"
 * ROADWAY BRIDGE NOT SHOWN FOR CLARITY



2 STATION SECTION LOOKING WEST
 SCALE: 3/16" = 1'-0"

10/16/27 AM 0161708-60W29-AD-302.dgn



USER NAME = BAWitor†	DESIGNED - WHB	REVISED
	CHECKED - CRR	REVISED
PLOT SCALE = 10:8.0012 ' / in.	DRAWN - WHB	REVISED
PLOT DATE = 10/29/2013	CHECKED - CRR	REVISED

STATE OF ILLINOIS
 DEPARTMENT OF TRANSPORTATION

PEORIA STREET STATION
 DEMOLITION STATION SECTIONS

SHEET NO. AD-3020F 117 SHEETS

PRELIMINARY NOT FOR CONSTRUCTION

MUN	SECTION	COUNTY	TOTAL SHEETS	SHEET NO.
2090	2013-011R	COOK	356	225
CONTRACT NO.			60W29	
ILLINOIS		FED. AID PROJECT	FED. AID PROJECT	