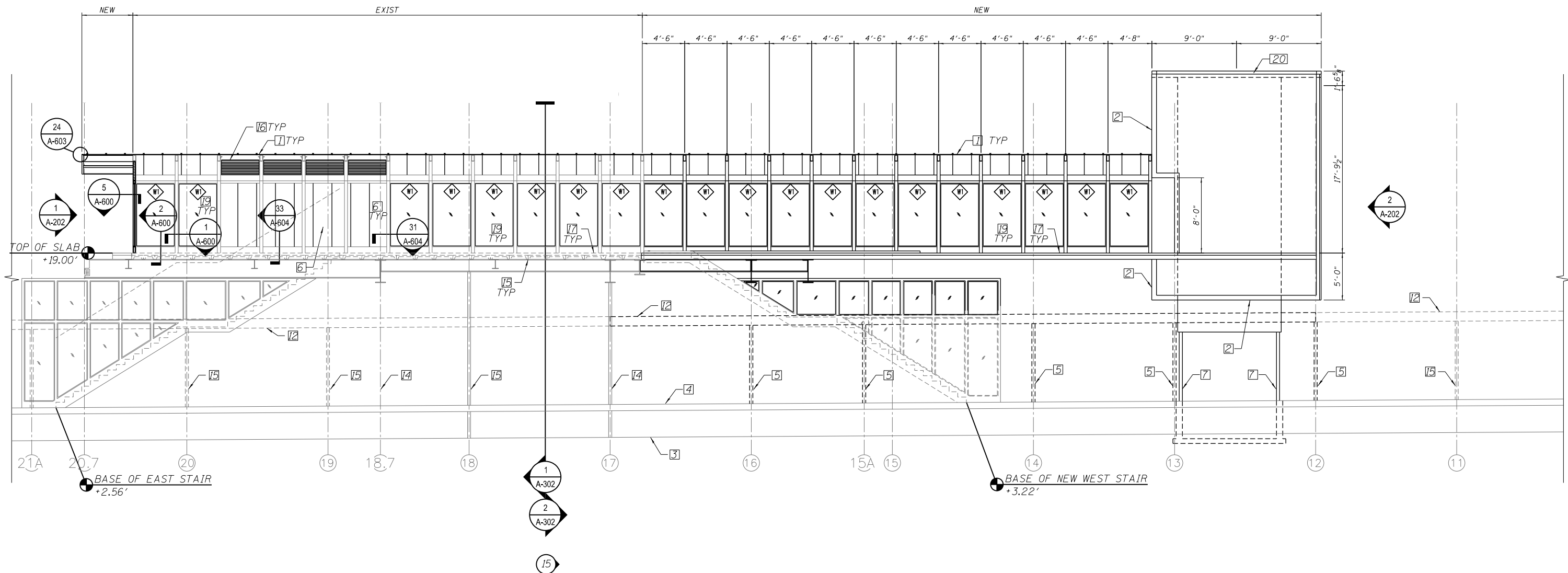


- KEY NOTES:
1. TRANSLUCENT PANEL ROOF SYSTEM
  2. INSULATED STAINLESS STEEL PANEL SYSTEM
  3. FINISH GRADE
  4. PLATFORM
  5. NEW CANOPY COLUMN
  6. TRANSLUCENT SYSTEM TO MATCH ROOF COLOR
  7. PAINTED STEEL HOISTWAY STRUCTURE - SEE STR DWGS
  8. NEW STEEL TUBE STRUCTURAL - SEE STR DWGS
  9. NEW STRUCTURAL FRAMING - SEE STR DWGS - SEE STR DWGS
  10. STRUCTURAL BEAM
  11. FINISH FLOOR LEVEL
  12. PLATFORM CANOPY AND CANOPY COLUMNS DASHED FOR CLARITY
  13. LOUVER
  14. EXIST STATION COLUMN TO BE REMOVED
  15. EXIST STATION COLUMN TO REMAIN
  16. LINEAR METAL CEILING SYSTEM
  17. NEW CONC SLAB
  18. EXIST PRECAST PLANK
  19. W/ TEMPERED GLASS
  20. SINGLE PLY MEMBRANE ROOF



1 STATION SECTION LOOKING SOUTH  
 SCALE: 3/16" = 1'-0"  
 \*STAIR RAILINGS NOT SHOWN FOR CLARITY

10/16/14 4:44 AM 0161708-60W29-A-300.dgn



USER NAME = BAWitorf	DESIGNED - WHB	REVISED
	CHECKED - CRR	REVISED
PLOT SCALE = 10:8.0012 ' / in.	DRAWN - WHB	REVISED
PLOT DATE = 10/29/2013	CHECKED - CRR	REVISED

STATE OF ILLINOIS  
 DEPARTMENT OF TRANSPORTATION

PEORIA STREET STATION  
 STATION SECTIONS

SHEET NO. A-300 OF 117 SHEETS

PRELIMINARY NOT FOR CONSTRUCTION

MUN	SECTION	COUNTY	TOTAL SHEETS	SHEET NO.
2090	2013-011R	COOK	356	237
CONTRACT NO. 60W29				
ILLINOIS FED. AID PROJECT		FED. AID PROJECT		