

## PLUMBING FIXTURE SCHEDULE

QTY.	FIXTURE	SYMBOL	SIZE	TYPE	MANUFACTURER	MODEL NO.	COLOR	MATERIAL	TRAP	CARRIER	MOUNTING HEIGHT	SUPPLY FITTING	STOP VALVE	REMARKS
1	LAVATORY	LAV	20"x18-1/4"	WALL MOUNTED	AMERICAN STANDARD	0356.015	WHITE	VITREOUS CHINA	1-1/4" C.P. "P" TRAP WITH ESCUTHEON	J.R. SMITH 0750	34" TO RIM	CHICAGO FAUCETS 404-VE-2805CP	PAIR CHICAGO FAUCET 1005-CP	FAUCET HOLES ON 8" CENTERS. LAVATORY TO BE ADA COMPLIANT, PIPE ACCORDINGLY. GRID DRAIN, INSULATE WITH TRUEBRO INSULATION.
1	WATER CLOSET	WC	31-3/4"x19-1/2"	WALL MOUNTED	AMERICAN STANDARD	3351.001	WHITE	VITREOUS CHINA	INTEGRAL	J.R. SMITH 0230	17" TO RIM	SLOAN 115-1.6	INTEGRAL	WATER CLOSET TO BE ADA COMPLIANT. SEAT TO BE CHURCH #2955SSC WITH OPEN FRONT, WITHOUT COVER.
1	MOP SINK	MS	24"x24"x12"	FLOOR MOUNTED	FIAT	TSBC-1610	GRAY	CEMENT	3" C.P. "P" TRAP WITH ESCUTHEON	--	ON FLOOR	CHICAGO FAUCETS 911-ISC	INTEGRAL	MOP SINK TO BE PROVIDED WITH VACUUM BREAKER (MTD 7'-6" AFF). INCLUDE FIAT #832-AA HOSE W/BACKET AND FIAT #889-CC MOP HANGER.

KOHLER, ELJER, AND CRANE ARE APPROVED EQUALS FOR LAVATORIES AND WATER CLOSETS. FLORESTONE, CREATIVE INDUSTRIES, AND ELSMERE ARE APPROVED EQUALS FOR MOP SINKS.

## DRAIN FITTING SCHEDULE

SYM.	TYPE	SIZE	MANUFACTURER	MODEL NO.	TOP FINISH	REMARKS
FD	FLOOR DRAIN	4"	J.R. SMITH	2010-B-U	8" SQUARE NICKEL-BRONZE	GALVANIZED BODY; 2" CAST IRON "P" TRAP; CLAMPING RING.
CO	CLEAN OUT	4"	J.R. SMITH	4420	---	CAST IRON CLEANOUT FERRULE, BRONZE COUNTERSUNK PLUG.
FCO	FLOOR CLEAN OUT	4"	J.R. SMITH	4023	SATIN NIKALOY	CAST IRON CLEANOUT FERRULE, BRONZE COUNTERSUNK PLUG.
WCO	WALL CLEAN OUT	4"	J.R. SMITH	4422	5-1/2" ROUND STAINLESS STEEL	ACCESS COVER, CENTER SCREW, COATED CAST IRON CLEANOUT FERRULE WITH NO-HUB CONNECTION AND BRONZE COUNTERSUNK PLUG.
OSD	OPEN SITE DRAIN	4"	J.R. SMITH	3824	5" FUNNEL INLET	DEEP SEAL "P" TRAP WITH INDIRECT WASTE FUNNEL AND SIDE OUTLET THREADED CONNECTION.

JOSAM, ZURN, AND WADE ARE APPROVED EQUALS.  
CLEANOUTS TO BE ADDED AS NEEDED, AT INTERVALS NO LARGER THAN FIFTY FEET AND ANY CHANGE IN DIRECTION.

## WATER HEATER (WH)

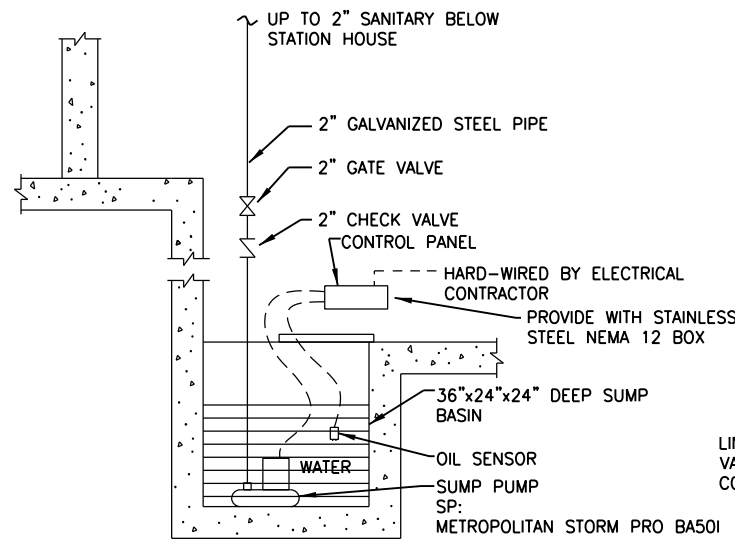
(QTY. 1) INSTANTANEOUS ELECTRIC WATER HEATER (WH) TO BE BRADFORD WHITE MODEL EFC-8300-2-S-10 OR APPROVED EQUAL. 208 VOLTS, 1 PHASE, 8.3KW, 39.0 AMPS. CAPABLE OF HEATING 0.75 GPM AT A TEMPERATURE RISE OF 76°F. UNIT TO HAVE ABS UL 94 VO RATED COVER. HEATER BODY AND ELEMENT TO BE GLASS REINFORCED NORYL. ELEMENT TO BE REPLACABLE CARTRIDGE INSERT. UNIT TO HAVE A REPLACABLE FILTER IN THE INLET CONNECTOR. ELEMENT TO BE IRON FREE, NICKEL-CHROME MATERIAL. HEATER TO BE FITTED WITH 1/2" COMPRESSION NUTS AND SLEEVES TO ELIMINATE NEED FOR SOLDERING. MAXIMUM OPERATING PRESSURE OF 150 PSI. HOT WATER STORAGE TANKS ARE PROHIBITED.

## SUMP PUMPS (SP)

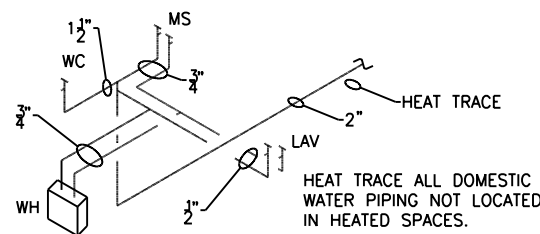
SUMP PUMP (SP) TO BE METROPOLITAN MODEL "STORM-PRO" BA501 HEAVY-DUTY SUBMERSIBLE PUMP, WITH STAINLESS STEEL HOUSING AND PUMP STRAINER, NON-CLOGGING VORTEX CAST IRON IMPELLER, STAINLESS STEEL SHAFT, BUNA-N O-RINGS, DUAL MECHANICAL, TYPE 21 OIL LUBRICATED SEALS, UPPER & LOWER BEARINGS (SINGLE RING BALL, OIL LUBRICATED). MOTOR TO BE 1/2-HP, 115-VOLT, 1-PH, 5.8-AMP DRAW. DISCHARGE TO BE 2", AND THE PUMP IS TO BE CAPABLE OF 15 GPM@26 FT. HD. SUMP PUMP TO BE PROVIDED WITH A STAINLESS STEEL NEMA 12 BOX. ACCEPTABLE ALTERNATIVES STAINLESS INCLUDE WEIL PUMP AND APPROVED EQUALS. SEE SPECIFICATION SECTION 22 40 00 PLUMBING FOR ALL REQUIRED ACCESSORIES.

## PLUMBING SYMBOL & ABBREVIATION LIST

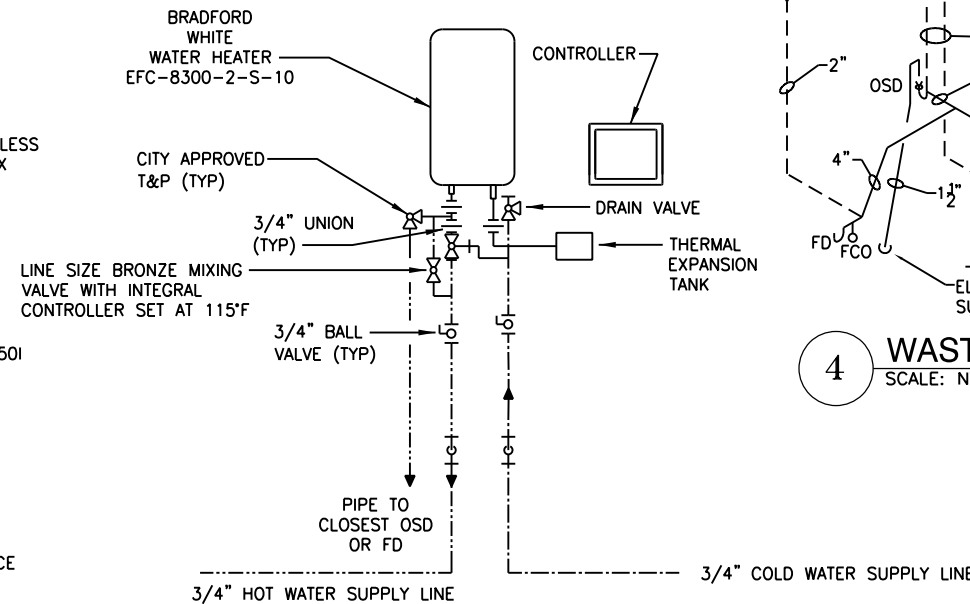
CO	CLEAN OUT	RD	ROOF DRAIN
CONT.	CONTINUED	S	SANITARY SEWER
CW	COLD WATER	SP	SUMP PUMP
DN	DOWN	SS	SERVICE SINK
DS	DOWN SPOUT	ST	STORM SEWER
F/B	FROM BELOW	TYP	TYPICAL
FCO	FLOOR CLEAN OUT	V	VENT
FD	FLOOR DRAIN	VB	VACUUM BREAKER
HB	HOSE BIBB	VTR	VENT THRU ROOF
HW	HOT WATER	WC	WATER CLOSET
LAV	LAVATORY	WCO	WALL CLEAN OUT
NTS	NOT TO SCALE	WH	WATER HEATER
OSD	OPEN-SITE DRAIN		CONNECT TO EXISTING
	SANITARY SEWER (ABOVE GROUND)		
	SANITARY SEWER (BELOW GROUND)		
	STORM SEWER (ABOVE GROUND)		
	STORM SEWER (BELOW GROUND)		
	VENT PIPING		
	COLD WATER PIPING		
	HOT WATER PIPING		
	HEAT-TRACED PIPING		
	PIPE TURNED DOWN		
	PIPE TURNED UP		
	TEE TURNED DOWN		
	TEE TURNED UP		
	GATE VALVE		
	CHECK VALVE		
	BALL VALVE		



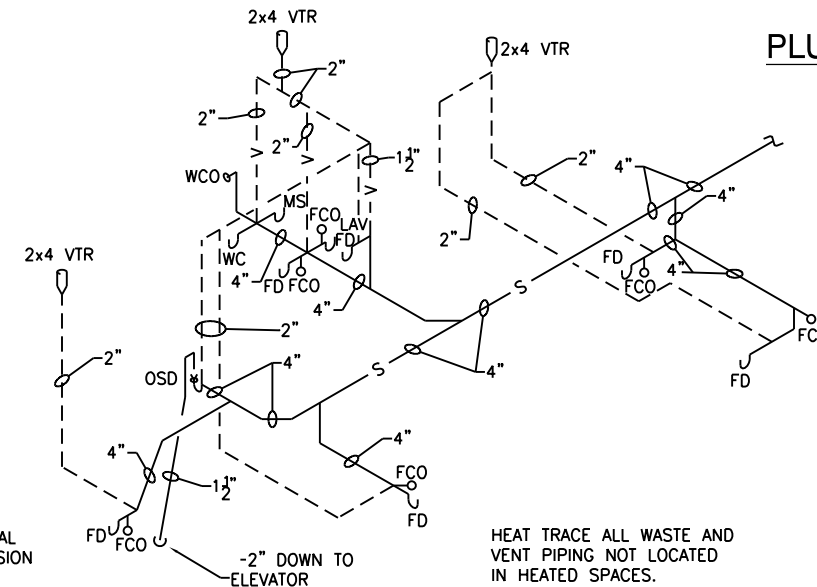
**1 ELEVATOR SUMP PUMP PIPING DIAGRAM**  
SCALE: NTS



**2 WATER SUPPLY DIAGRAM**  
SCALE: NTS



**3 INSTANTANEOUS ELECTRIC WATER HEATER DIAGRAM**  
SCALE: NTS



**4 WASTE AND VENT RISER DIAGRAM**  
SCALE: NTS

### NOTES:

- ALL WASTE, HOT & COLD WATER PIPING IN NON-HEATED AREAS TO BE HEAT-TRACED AND INSULATED.
- COLD WATER SUPPLY CONNECTIONS FOR FIXTURES TO BE ON THE RIGHT AND HOT WATER SUPPLY CONNECTIONS FOR FIXTURES TO BE ON THE LEFT.
- HEAT TRACING AND HEAT TRACING CONTROLS BY ELECTRICAL CONTRACTOR. SEE ELECTRICAL DRAWINGS.

**THIS IS A BUY USA (AMERICAN) PROJECT,  
ALL EQUIPMENT TO BE MANUFACTURED IN THE USA**



3940 West Touhy Avenue, Suite 210, Niles, IL 60714  
Phone: 847-647-9999 • Fax: 847-647-4719



USER NAME = habib	DESIGNED -	REVISED
	CHECKED -	REVISED
PLOT SCALE = 2x0' in / in.	DRAWN -	REVISED
PLOT DATE = 10/28/2013	CHECKED -	REVISED

**STATE OF ILLINOIS  
DEPARTMENT OF TRANSPORTATION**

**PEORIA STREET STATION  
PLUMBING NOTES, DIAGRAMS AND SYMBOL LIST**

SHEET NO. 75 OF 117 SHEETS

MUN	SECTION	COUNTY	TOTAL SHEETS	SHEET NO.
2090	2013-011R	COOK	356	266
CONTRACT NO.				60W29

ILLINOIS FED. AID PROJECT