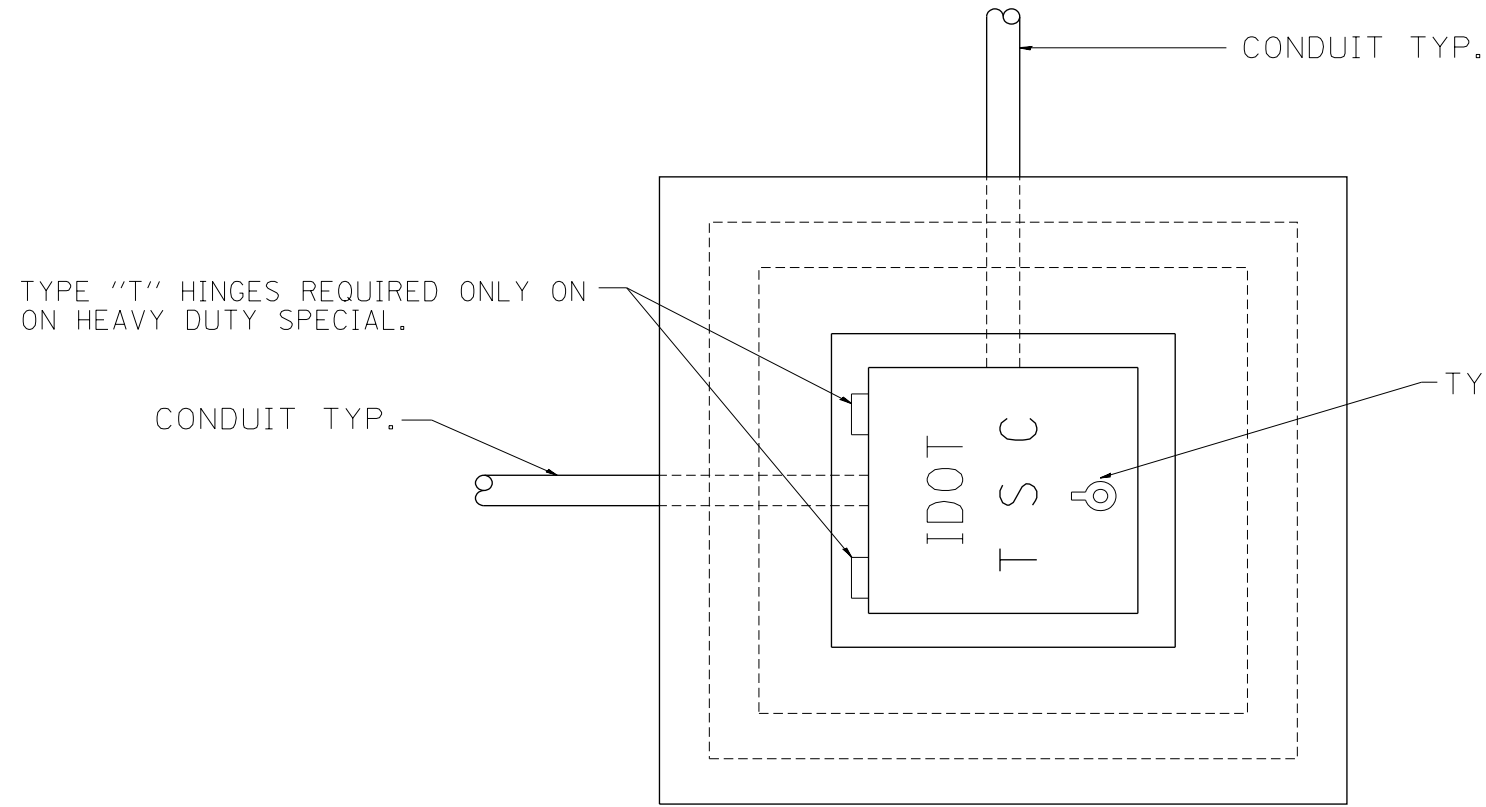


FILE PATH = p:\388035-paint\ascomon\me\local\pawec\000\Documents\01_Americas\Transportation\60269938_Circle\Phase_1\1000_CAD\005_Roadway_Sheets\60W29_Sht-1TS-04

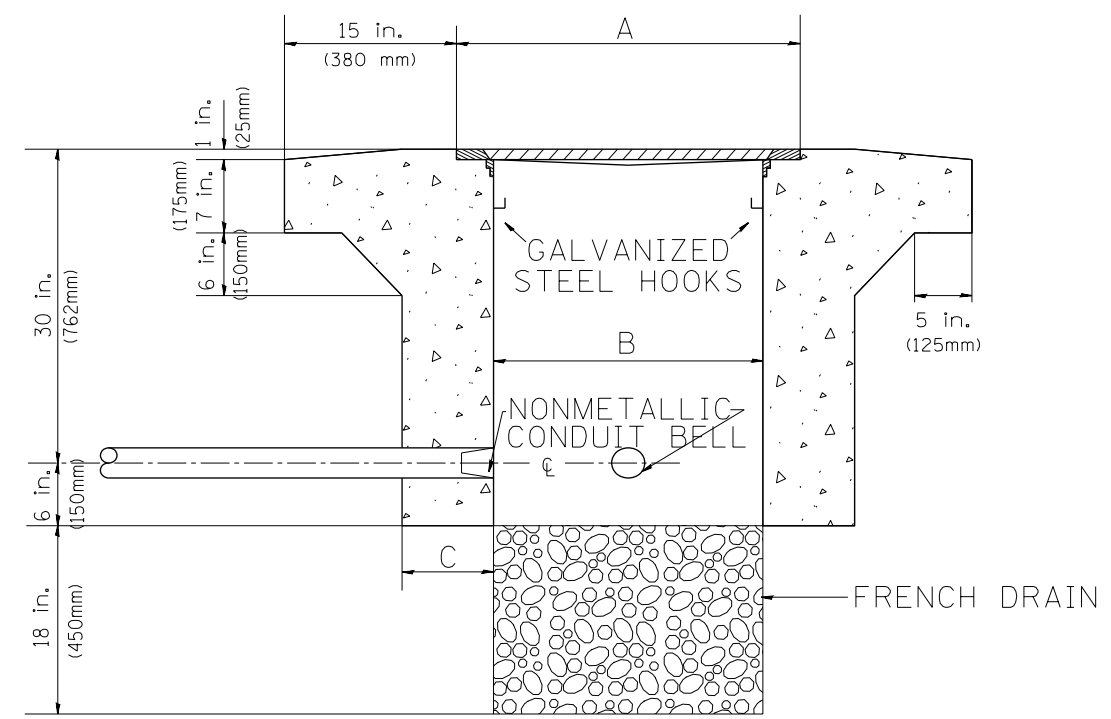


PLAN

HEAVY DUTY HANDHOLE MINIMUM DIMENSIONS (UNHINGED)

A	28" (711 mm)
B	22" (559 mm)
C	8" (200 mm)

(FRAME AND COVER 260 LBS. (118 Kg.) MIN.)



ELEVATION

HEAVY DUTY HANDHOLE SPECIAL MINIMUM DIMENSIONS

A	31.5" (800 mm)
B	30.0" (762 mm)
C	10.0" (250 mm)

(FRAME AND COVER 405 LBS. (184 Kg. (405))

PC CONCRETE - HEAVY DUTY HAND HOLE

FILE NAME = D160W29-sht-1TS-04	USER NAME = BAW:ort	DESIGNED - R.L.	REVISED - 04/97	STATE OF ILLINOIS DEPARTMENT OF TRANSPORTATION TRAFFIC SYSTEMS CENTER	IDOT TRAFFIC SYSTEMS CENTER STANDARD DRAWINGS TY-1TSC-400#15	F.A.I. RTE. = 90/94/290	SECTION = 2013-01R	COUNTY = COOK	TOTAL SHEETS = 356	SHEET NO. = 331		
PLOT SCALE = 100.0000' / in.	CHECKED - R.L.	REVISED -	SCALE: NO SCALE			SHEET 1 OF 1 SHEETS	STA. TO STA.	ILLINOIS FED. AID PROJECT				
PLOT DATE = 10/28/2013	DATE - 09/11/96	REVISED -	CONTRACT NO. 60W29									
TRAFFIC SYSTEMS CENTER (TY-1TSC-400#15)												