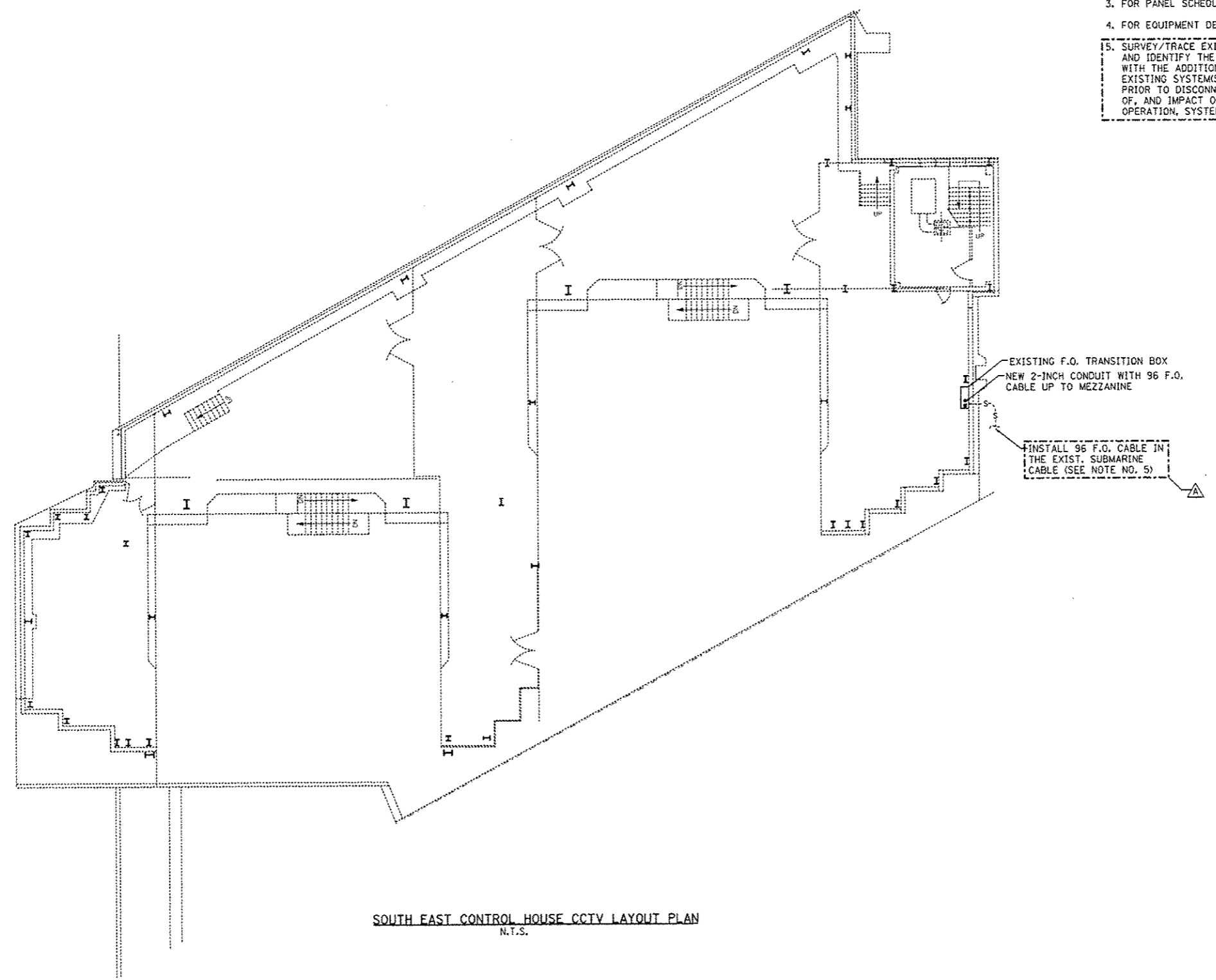




- NOTES:**
1. FOR GENERAL AND ELECTRICAL NOTES, SEE DWG'S 2, 3 & 4.
 2. FOR ELECTRICAL SYMBOLS AND ABBREVIATIONS, SEE DWG. 5
 3. FOR PANEL SCHEDULES, SEE DWG 22.
 4. FOR EQUIPMENT DESCRIPTIONS SEE ELECTRICAL SPECIFICATIONS.
 5. SURVEY/TRACE EXISTING CIRCUITS IN THE SUBMARINE CABLE TUBE AND IDENTIFY THE SYSTEM(S) AFFECTED. REINSTALL AS REQUIRED WITH THE ADDITIONAL 96 STRAND FO CABLE, RETEST AND VERIFY EXISTING SYSTEM(S) FUNCTIONALITY UPON COMPLETION OF THE WORK. PRIOR TO DISCONNECTING EXISTING CIRCUITS, DOCUMENT THE FUNCTIONALITY OF, AND IMPACT ON EXISTING SYSTEM(S) AND POTENTIAL ISSUES, E.G. BRIDGE OPERATION, SYSTEM(S) RE-CERTIFICATION. COORDINATE WITH ENGINEER.



SOUTH EAST CONTROL HOUSE CCTV LAYOUT PLAN
N.T.S.

T:\16843A\CCTV\Files From NY\16843A-CCTV-E09-14_Est-DockLV-REV.10-16-2013.dgn
19-DEC-2013 18:15

PARSONS BRINCKERHOFF
230 West Monroe Street
Suite 200
Chicago, IL 60606

USER NAME: pbr101d	DESIGNED: D. DRAKULICH	REVISED: 12/20/2013 D.C.P.
FILE NAME:	DRAWN: E. MALUSEL	REVISED: -
PLOT SCALE: NONE	CHECKED: S. STERN	REVISED: -
PLOT DATE: 12/18/2013	DATE: 10/18/2013	REVISED: -

**STATE OF ILLINOIS
DEPARTMENT OF TRANSPORTATION**

**CCTV SYSTEM, I-9094 TO CONGRESS PARKWAY
EAST SIDE DOCK LEVEL**

SCALE: AS SHOWN	SHEET NO. OF SHEETS	STA. 353+46.00 TO STA. 382+50.00
-----------------	---------------------	----------------------------------

F.A.P. RTE. 389	SECTION 2013-026-1	COUNTY COOK	TOTAL SHEETS 37	SHEET NO. 14
FED. ROAD DIST. NO. 1 ILLINOIS FED. AID PROJECT			CONTRACT NO. 60W49	