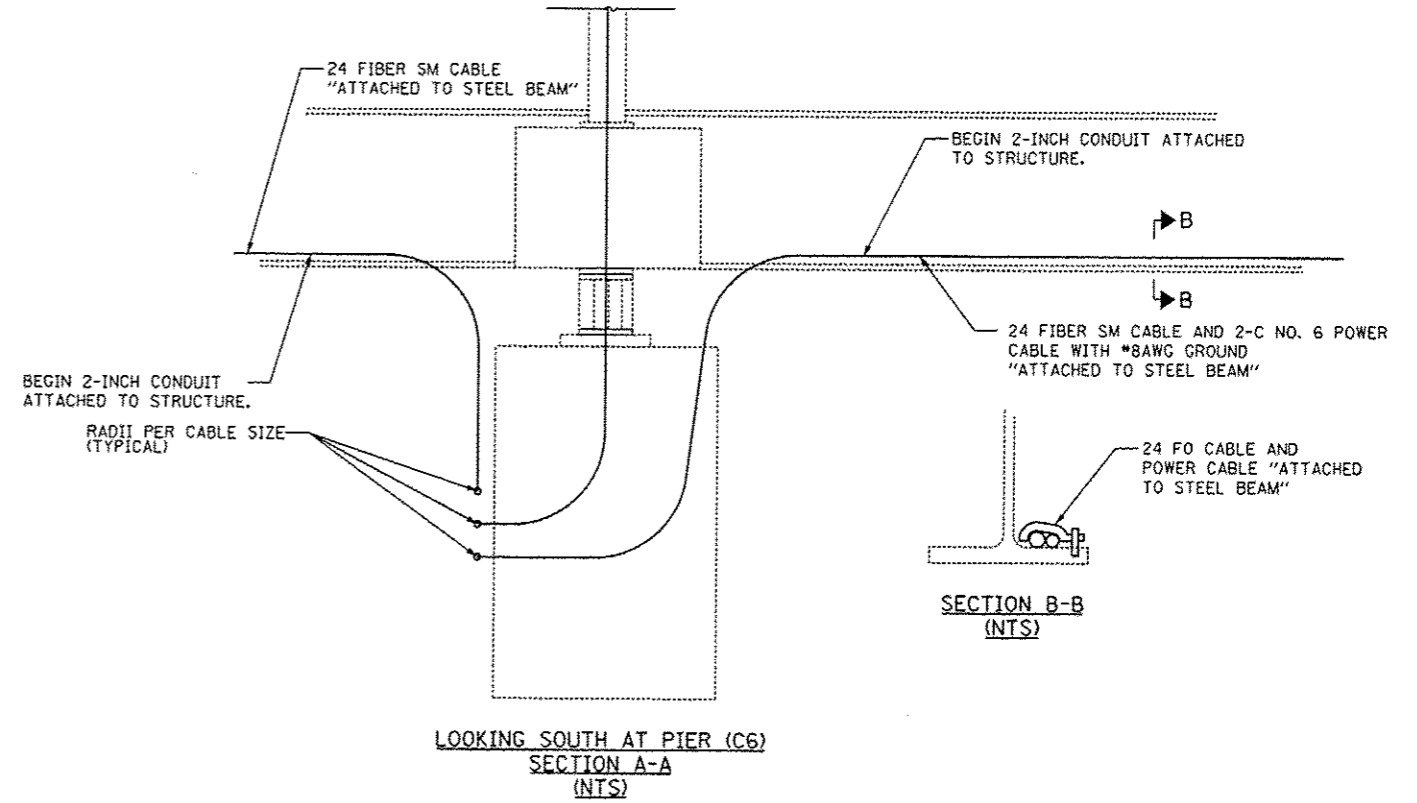
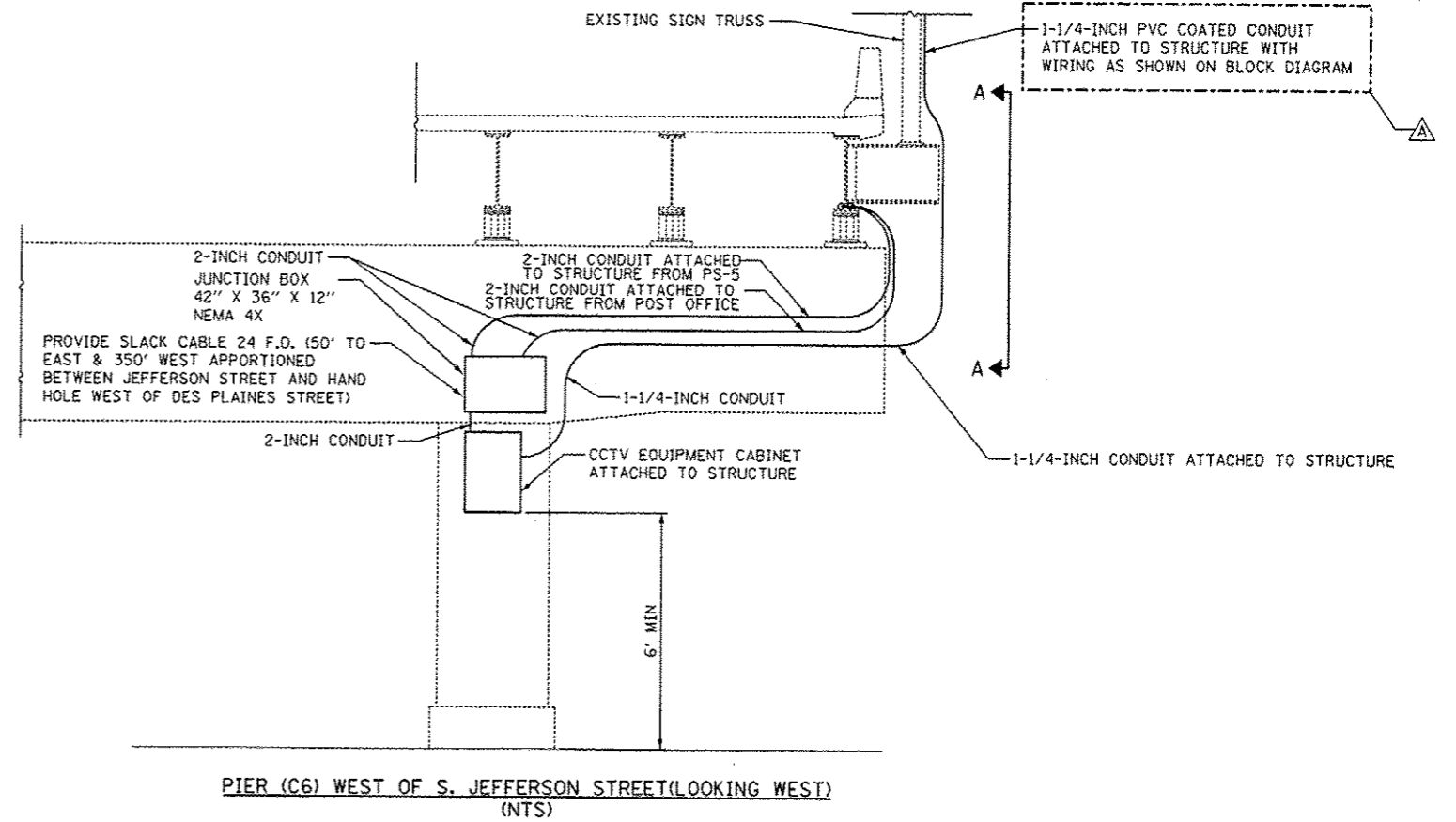


OVERHEAD SIGN STRUCTURE (F1)  
GENERAL PLAN & ELEVATION - LOOKING WEST  
ALUMINUM TRUSS & STEEL SUPPORTS  
(NTS)



I:\16843A\CCTV\Files From NY\09-17-2013\16843A-CongrPrK8F-CCTV\_E-09\_ST\_rev\_10-16-2013.dgn  
19-DEC-2013 10:15

**PARSONS  
BRINCKERHOFF**  
220 West Monroe Street  
Suite 700  
Chicago, IL 60606

USER NAME - patold	DESIGNED - D. DRAKULICH	REVISED - 12/20/2013 D.C.P.
FILE NAME	DRAWN - E. MALUSEL	REVISED -
PLOT SCALE - NONE	CHECKED - S. STERN	REVISED -
PLOT DATE - 10/18/2013	DATE - 10/18/2013	REVISED -

STATE OF ILLINOIS  
DEPARTMENT OF TRANSPORTATION

CCTV SYSTEM, I-9094 TO CONGRESS PARKWAY  
CCTV DETAIL AT JEFFERSON STREET

SCALE: AS SHOWN SHEET NO. OF SHEETS STA. 353+46.00 TO STA. 382+50.00

F.A.P. RTE.	SECTION	COUNTY	TOTAL SHEETS	SHEET NO.
389	2013-026-1	CODK	37	20
CONTRACT NO. 60W49				

FED. ROAD DIST. NO. 1 ILLINOIS FED. AID PROJECT