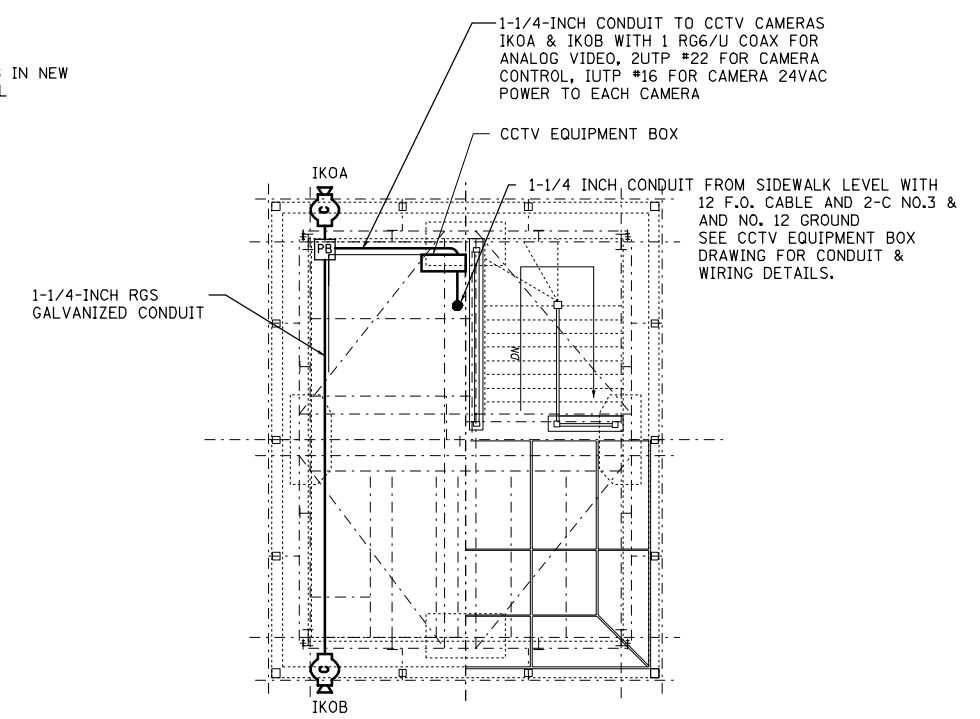
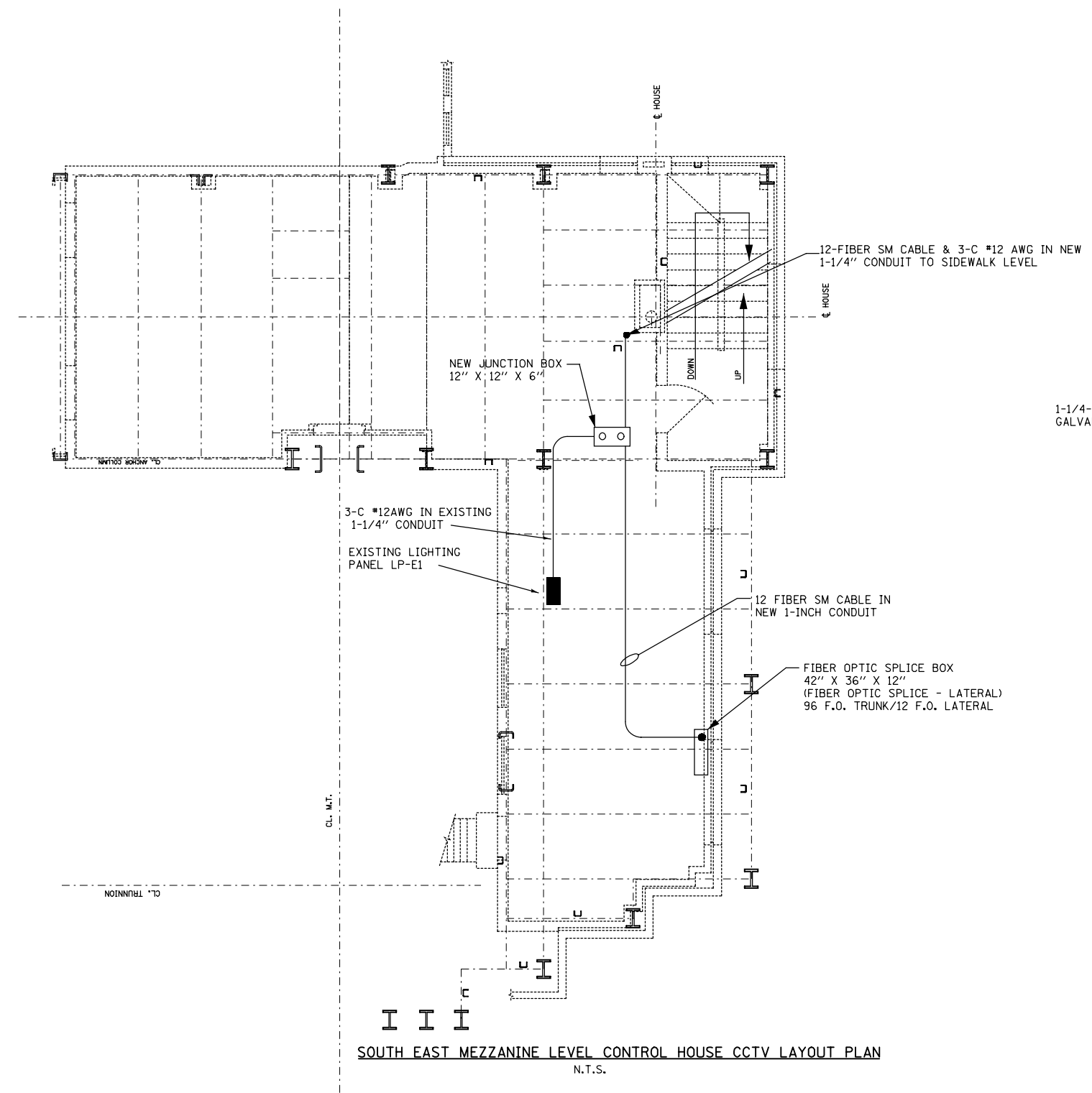




- NOTES:**
1. FOR GENERAL AND ELECTRICAL NOTES, SEE DWG'S 2, 3 & 4.
 2. FOR ELECTRICAL SYMBOLS AND ABBREVIATIONS, SEE DWG. 5
 3. FOR PANEL SCHEDULES, SEE DWG 22.
 4. FOR EQUIPMENT DESCRIPTIONS SEE ELECTRICAL SPECIFICATIONS.



EAST SIDE OPERATOR'S ROOM PLAN
N.T.S.

SOUTH EAST MEZZANINE LEVEL CONTROL HOUSE CCTV LAYOUT PLAN
N.T.S.

T:\168434\CCTV\Files from NY\168434-17-2013\168434-CCTV-E10-15-Est-MezzLv-OperRm_rev10-17-2013.dgn 28-OCT-2013 13:46



USER NAME = pteid	DESIGNED - D. DRAKULICH	REVISED -
FILE NAME	DRAWN - E. MALUSEL	REVISED -
PLOT SCALE = NONE	CHECKED - S. STERN	REVISED -
PLOT DATE = 10/18/2013	DATE - 10/18/2013	REVISED -

**STATE OF ILLINOIS
DEPARTMENT OF TRANSPORTATION**

**CCTV SYSTEM, I-90/94 TO CONGRESS PARKWAY
EAST SIDE MEZZANINE LEVEL AND OPERATOR'S ROOM**

F.A.P. RTE.	SECTION	COUNTY	TOTAL SHEETS	SHEET NO.
389	2013-026-I	COOK	37	15
SCALE: AS SHOWN			CONTRACT NO. 60W49	
SHEET NO. OF SHEETS			FED. ROAD DIST. NO. 1 (ILLINOIS) FED. AID PROJECT	

STA. 353+46.00 TO STA. 382+50.00