

EAST ELEVATION
S.E. House

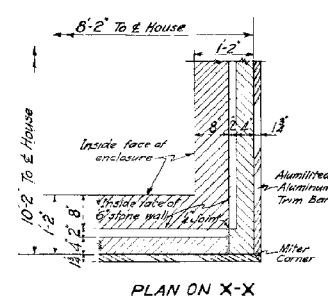
WEST ELEVATION
N.W. House
Scale 3/16" = 1'-0"

WEST ELEVATION
S.E. House
EAST ELEVATION
N.W. House

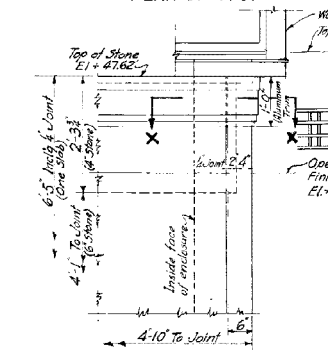
NOTE:
Unless otherwise shown -
All horizontal dimensions for stone joints are to & of joints.
All vertical dimensions are to & of joints.
All actual (horizontal) stone joints are at points supported by steel. All other apparent joints are 1/4" cut lines only in stone.
For elev. of wall in back of building, show on right hand side and east enclosure wall - See Drwg. No. 17554.
All stone shall be Select Buff Indiana Limestone See Specifications.

SOUTH ELEVATION
S.E. House

North Elevation N.W. House similar except stairs & cable slot are omitted & also construction of operators house is omitted.

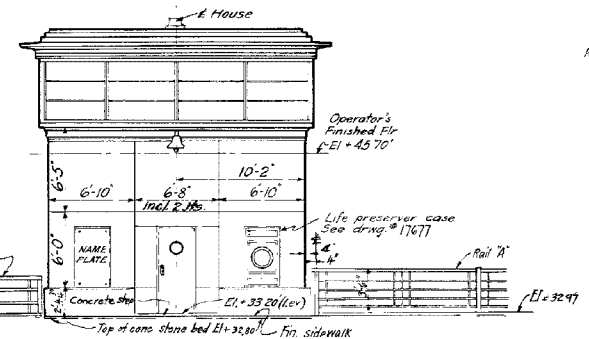


PLAN ON X-X

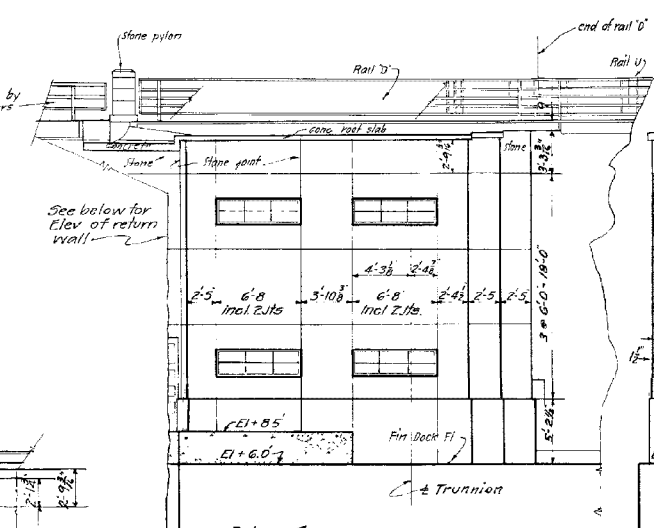


ELEVATION

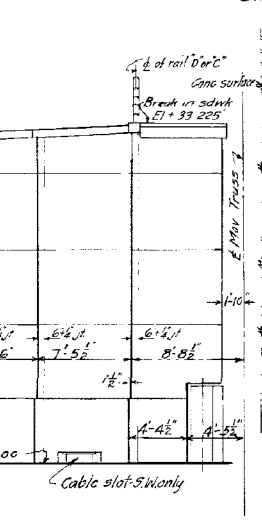
TYPICAL DETAIL AT TOP OF STONE WALL CORNER
Scale 3/8" = 1'-0"



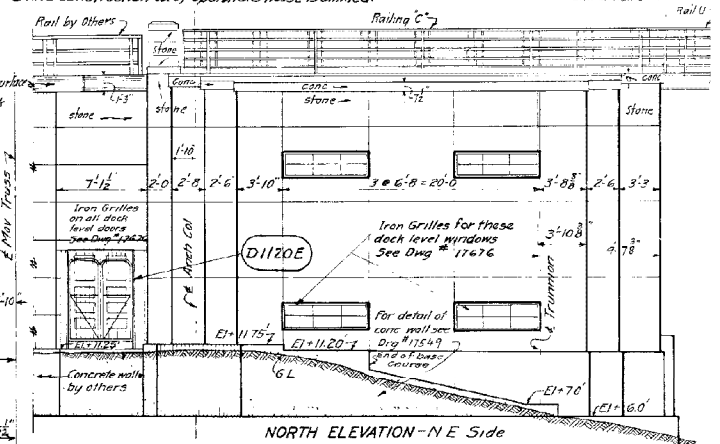
ROADWAY ELEVATION (South)
N.W. House
S.E. House similar except for sidewalk grades and stairway at left.
Scale 3/16" = 1'-0"



SOUTH ELEVATION - S.W. Side



WEST ELEVATION - N.E. Side
EAST ELEVATION - S.W. Side



NORTH ELEVATION - N.E. Side

NOTE:
EXISTING PLAN FOR REFERENCE ONLY.

T:\168434\CCTV\Files from NY\17-2013\168434-CCTV-E16-21-E-DETS.dgn 28-OCT-2013 13:49

PARSONS BRINCKERHOFF 230 West Monroe Street Suite 900 Chicago, IL 60606	USER NAME = pated	DESIGNED - D. DRAKULICH	REVISED -	STATE OF ILLINOIS DEPARTMENT OF TRANSPORTATION	CCTV SYSTEM, I-90/94 TO CONGRESS PARKWAY BRIDGE HOUSES AND ENCLOSURES	F.A.P. RTE. 389	SECTION 2013-026-I	COUNTY COOK	TOTAL SHEETS 37	SHEET NO. 37	
	FILE NAME	DRAWN - E. MALUSEL	REVISED -			SCALE: AS SHOWN	SHEET NO. OF SHEETS	STA. 353+46.00 TO STA. 382+50.00	FED. ROAD DIST. NO. 1	ILLINOIS FED. AID PROJECT	CONTRACT NO. 60W49
	PLOT SCALE = NONE	CHECKED - S. STERN	REVISED -								
	PLOT DATE = 10/18/2013	DATE - 10/18/2013	REVISED -								