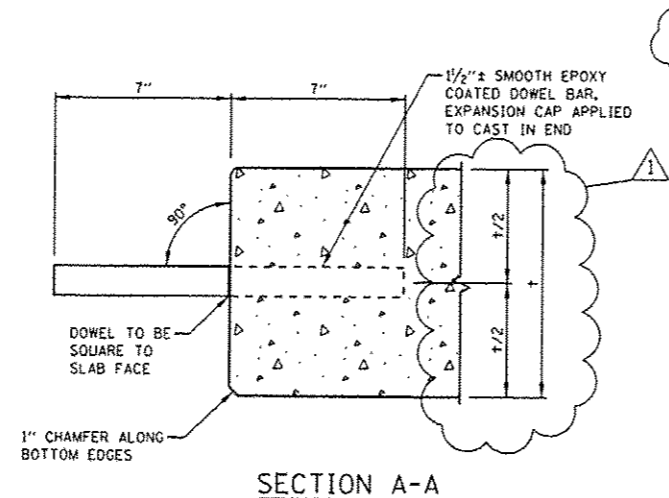
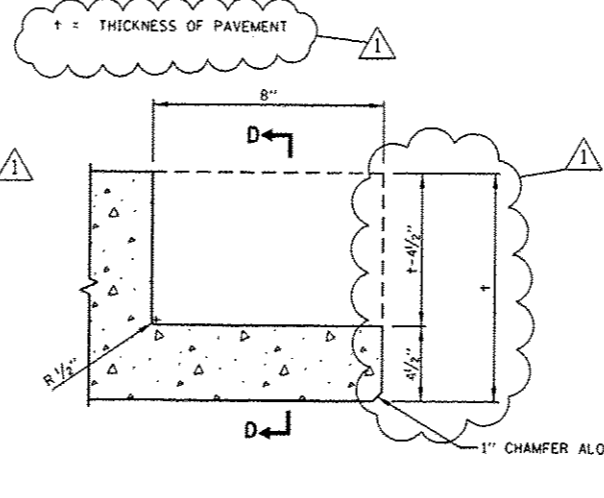


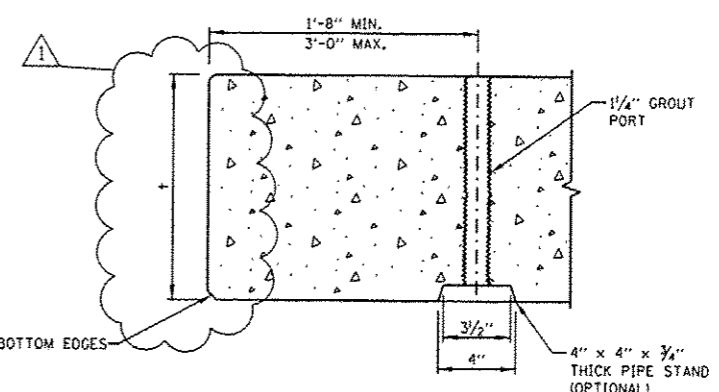
DETAIL A
GROUT PIPE STAND



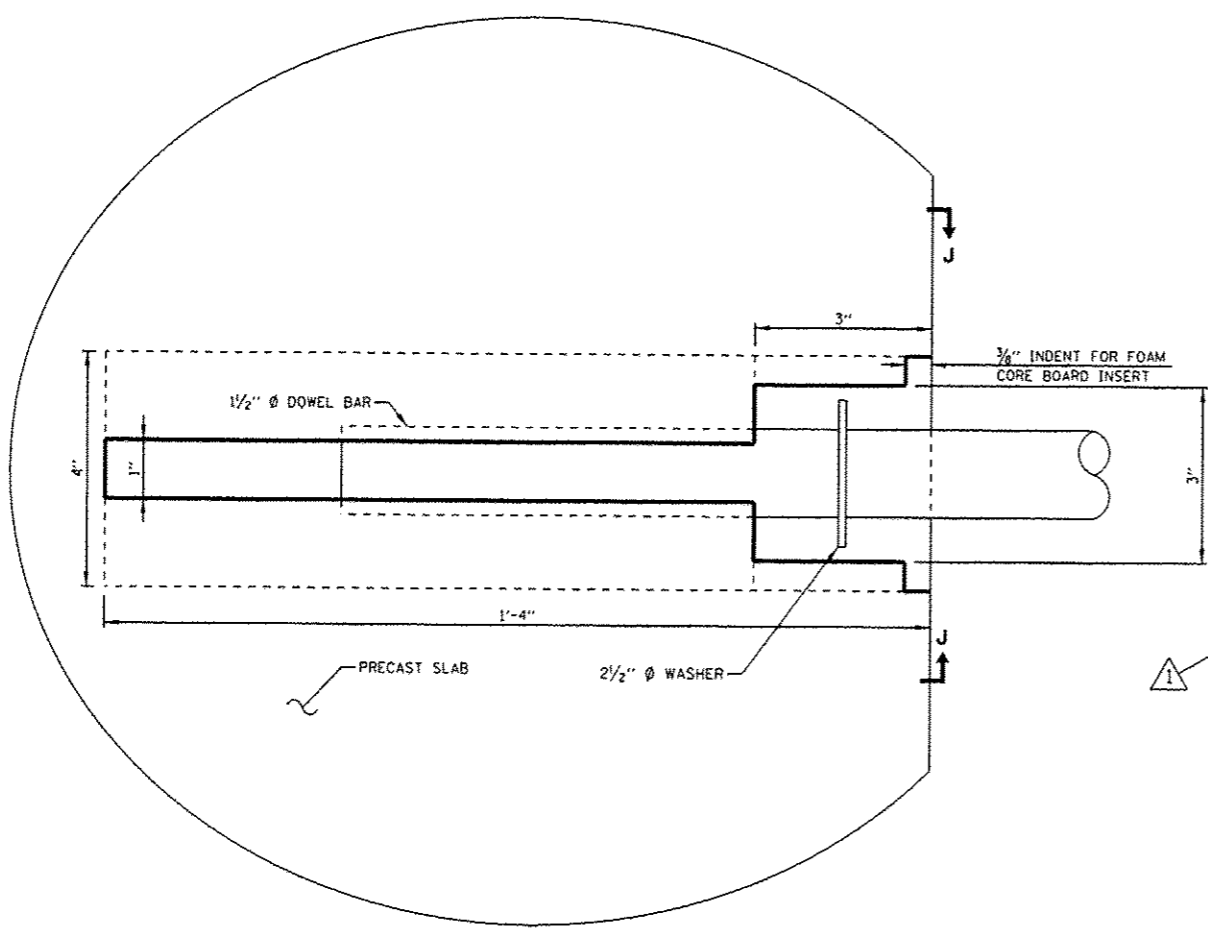
SECTION A-A
TRANSVERSE JOINT-DOWEL BAR (EMBEDDED INTO STANDARD PRECAST PAVEMENT SLAB FOR BOTH ISOLATED AND CONSECUTIVE PLACEMENT-TYP.)



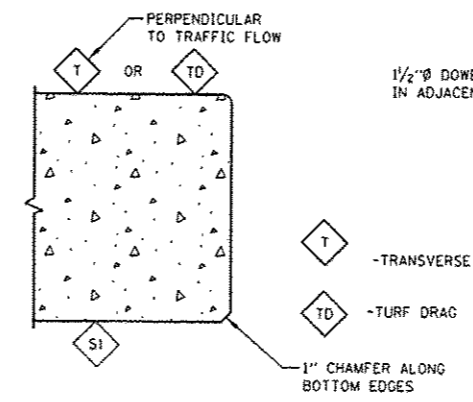
SECTION B-B
TRANSVERSE WIDE MOUTH OPEN SLOT DETAIL FOR CONSECUTIVE STANDARD SLABS



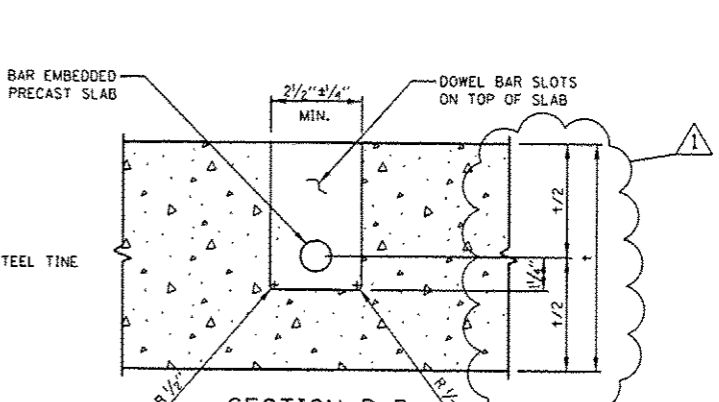
SECTION C-C
GROUT CHANNEL & PORT LOCATION



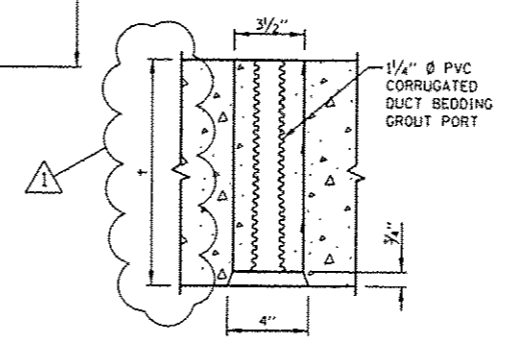
DETAIL B
TRANSVERSE NARROW MOUTH SLOT
DETAIL FOR ISOLATED SLABS



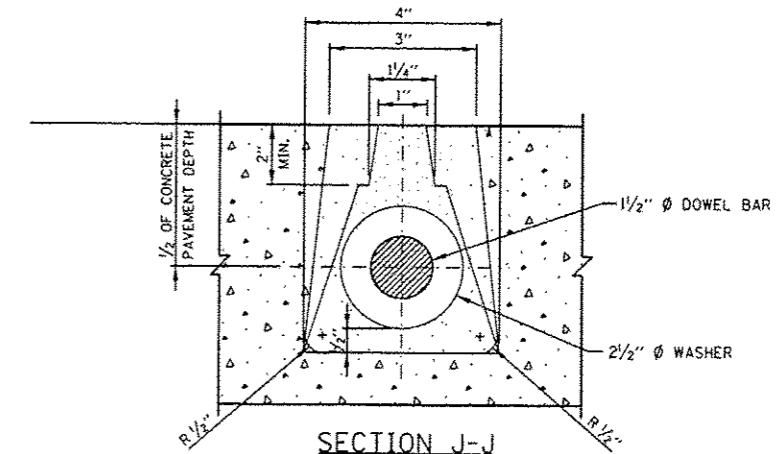
FINISH SCHEDULE



SECTION D-D
DOWEL BAR SECTION FOR WIDE MOUTH OPEN SLOTS



SECTION H-H
PIPE STAND ELEVATION



SECTION J-J
3" TAPER TO 4"x16" LONG DOWEL SLOT

FABRICATION DETAILS

FILE NAME =	USER NAME = PnceaPL	DESIGNED - O. PATEL	REVISED - 1-9-14 PLP	STATE OF ILLINOIS DEPARTMENT OF TRANSPORTATION	PRECAST CONCRETE PAVEMENT SLABS			F.A.P. RTE. 339	SECTION 116R&R-31PCC-PP	COUNTY COOK	TOTAL SHEETS 29	SHEET NO. 20C
cr:\p-work\pvidat\pnceapl\0350268\Dist	td.dgn	DRAWN -	REVISED -		SCALE: NONE	SHEET NO. 7 OF 19 SHEETS	STA. TO STA.	BD 57	CONTRACT NO. 60W56	FED. ROAD DIST. NO. 1 ILLINOIS FED. AID PROJECT		
		CHECKED -	REVISED -									
		DATE - 10-25-2013	REVISED -									