

STATE OF ILLINOIS
DEPARTMENT OF TRANSPORTATION
DIVISION OF HIGHWAYS

**PROPOSED
HIGHWAY PLANS**

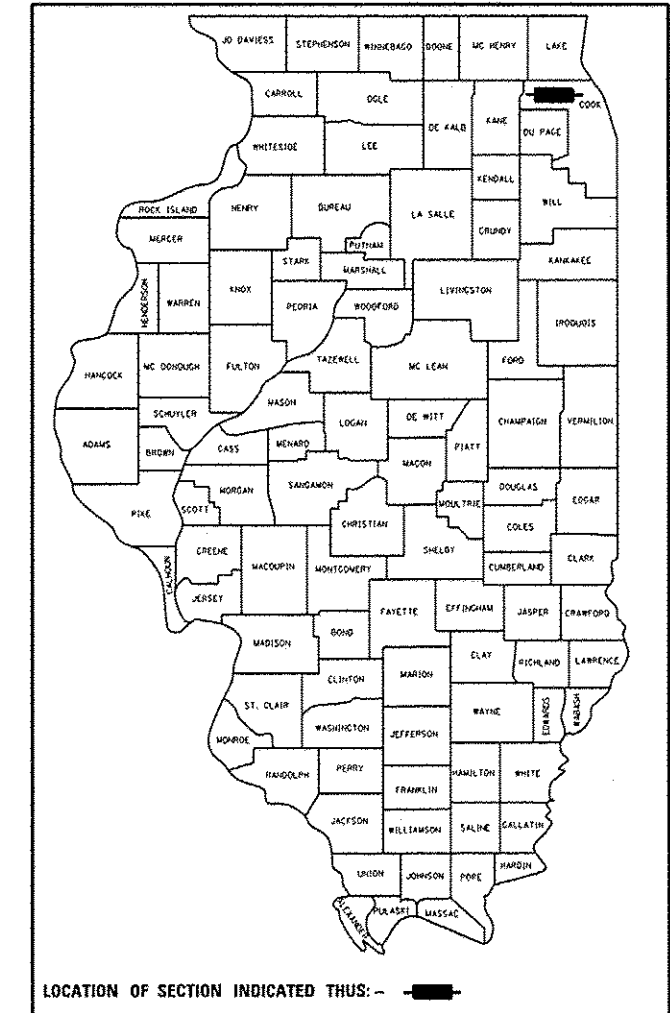
F.A.P. ROUTE 339 : IL ROUTE 62 (ALGONQUIN ROAD)
PENNY ROAD TO WEST OF ROSELLE ROAD
SECTION 116(R&R-3)PCC-PP
PAVEMENT PATCHING AND DIAMOND GRINDING
COOK COUNTY

C-91-324-13

F.A.P. RTE.	SECTION	COUNTY	TOTAL SHEETS	SHEET NO.
339	116(R&R-3)PCC-PP	COOK	29	1
		ILLINOIS	CONTRACT NO. 60W56	

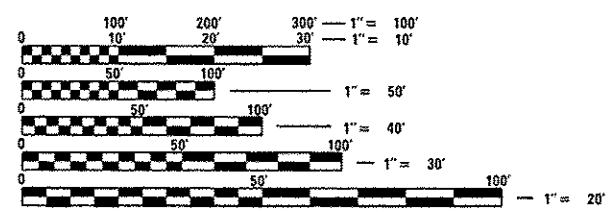
* 29 & 19 = 48

D-91-324-13



FOR INDEX OF SHEETS, SEE SHEET NO. 2

THIS PROJECT IS LOCATED IN:
THE VILLAGE OF HOFFMAN ESTATES
THE VILLAGE OF INVERNESS
THE VILLAGE OF SOUTH BARRINGTON

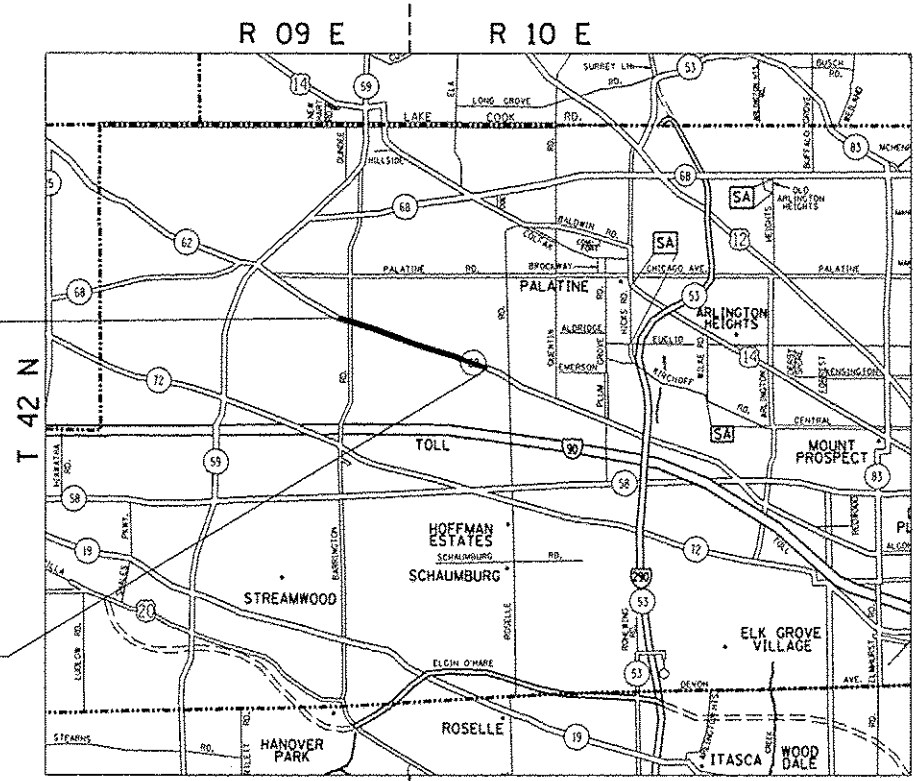


FULL SIZE PLANS HAVE BEEN PREPARED USING STANDARD ENGINEERING SCALES. REDUCED SIZED PLANS WILL NOT CONFORM TO STANDARD SCALES. IN MAKING MEASUREMENTS ON REDUCED PLANS, THE ABOVE SCALES MAY BE USED.

J.U.L.I.E.
JOINT UTILITY LOCATION INFORMATION FOR EXCAVATION
1-800-892-0123
OR 811

PROJECT BEGINS
STA 18+35

PROJECT ENDS
STA 205+00



BARRINGTON TOWNSHIP | PALATINE TOWNSHIP
GROSS AND NET LENGTH = 18,665 FT. = 3.54 MILES



LOCATION MAP (NOT TO SCALE)

TRAFFIC DATA:
2010 ADT = 28,900
SPEED LIMIT = 45 MPH

STATE OF ILLINOIS
DEPARTMENT OF TRANSPORTATION
DIVISION OF HIGHWAYS

SUBMITTED October 30, 2013

John Frattina, Jr.
DEPUTY DIRECTOR OF HIGHWAYS, REGION 9 ENGINEER

Dec 6, 2013
John D. Baranelli, P.E.
ENGINEER OF DESIGN AND ENVIRONMENT

Dec 6, 2013
Omer Osman, P.E.
DIRECTOR OF HIGHWAYS, CHIEF ENGINEER

PROJECT ENGINEER: DAN WILGREEN / (847) 705-4240
PROJECT MANAGER: KEN ENG / (847) 705-4247

CONTRACT NO. 60W56

PRINTED BY THE AUTHORITY
OF THE STATE OF ILLINOIS