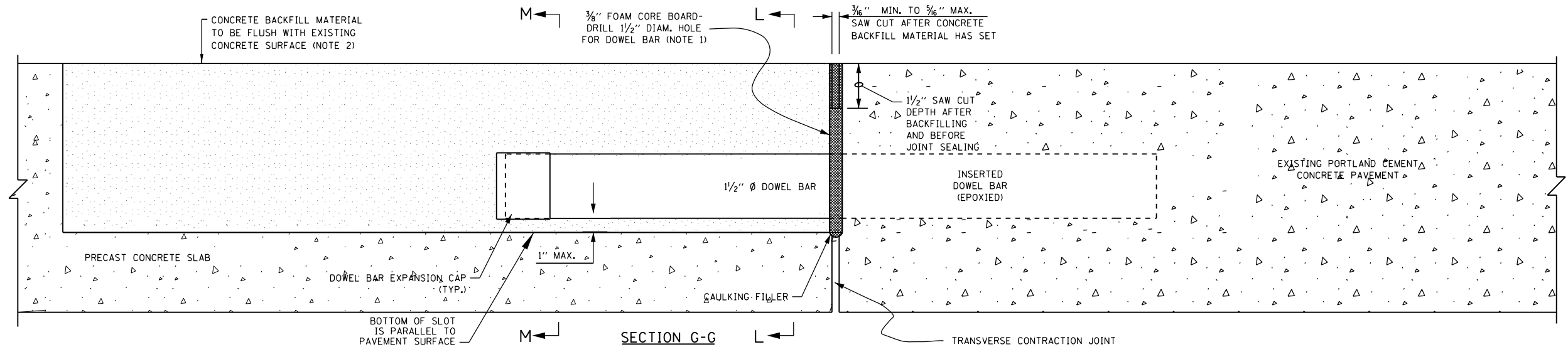
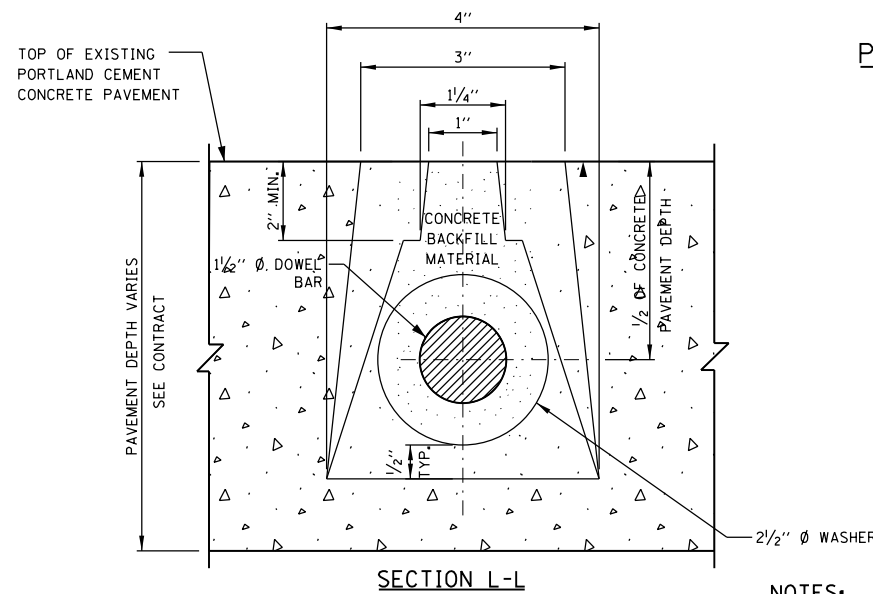


PLAN VIEW



SECTION G-G

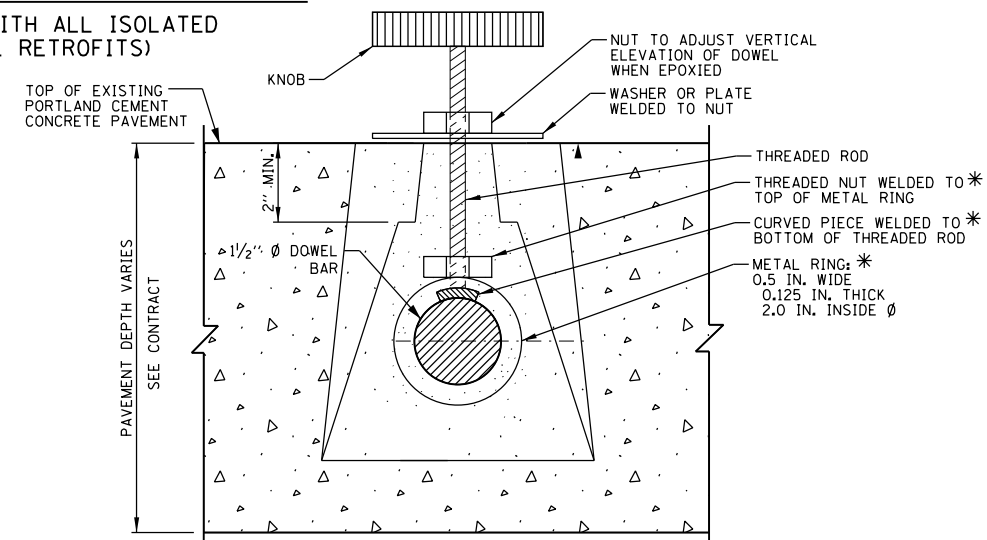
**DETAIL G - NARROW MOUTH DOWEL BAR  
PLACEMENT DETAIL FOR ISOLATED PRECAST PANELS  
(FOR OPTIONAL APPLICATION WITH ALL ISOLATED  
SLABS IN PLACE OF FULL RETROFITS)**



SECTION L-L

**NOTES:**

1. PLACE FOAM CORE BOARDS TO THE TOP OF PATCH.
2. UPON COMPLETION, THE FINISHED SURFACE OF THE CONCRETE BACKFILL MATERIAL SHALL NOT BE BELOW EXISTING CONCRETE SURFACE.



SECTION M-M  
**CLAMP DETAIL FOR SLIDING DOWEL BAR SLOTS**

\* METAL RING MAY BE REPLACED WITH A STRONG MAGNET WELDED TO THE THREADED ROD, AT LEAST ONE CLAMP WILL BE NEEDED FOR EACH INSERTED DOWEL BAR TO MAINTAIN ALIGNMENT.

FILE NAME =	USER NAME = PencePL	DESIGNED - O. PATEL	REVISED -	<b>STATE OF ILLINOIS DEPARTMENT OF TRANSPORTATION</b>	<b>PRECAST CONCRETE PAVEMENT SLABS</b>			F.A.P. RTE.	SECTION	COUNTY	TOTAL SHEETS	SHEET NO.
c:\pwork\work\p1dot\pencepl\d0350260\Dist\d.dgn		DRAWN -	REVISED -		339	116(R&R-3)PCC-PP	COOK	29	200			
PLOT SCALE = 100.0000' / 1in.		CHECKED -	REVISED -		<b>BD 57</b>			<b>CONTRACT NO. 60W56</b>				
PLOT DATE = 12/13/2013		DATE - 10-25-2013	REVISED -		SCALE: NONE	SHEET NO. 17 OF 19 SHEETS	STA.	TO STA.		FED. ROAD DIST. NO. 1 ILLINOIS FED. AID PROJECT		