

GENERAL NOTES

All structural steel shall conform to AASHTO Classification M-270 Gr. 36, unless otherwise noted.

Plan dimensions and details relative to existing plans are subject to nominal construction variations. The Contractor shall field verify existing dimensions and details affecting new construction and make necessary approved adjustments prior to construction or ordering of materials. Such variations shall not be cause for additional compensation for a change in scope of the work, however, the Contractor will be paid for the quantity actually furnished at the unit price bid for the work.

Cost of removal and re-installation of all members necessary to complete the work as detailed on the plans and as specified in the Special Provisions shall be included with Furnishing and Erecting Structural Steel.

The Inorganic Zinc Rich Primer / Acrylic / Acrylic Paint System shall be used for shop and field painting of new structural steel except where otherwise noted. The color of the final finish coat for all interior steel surfaces shall be gray, Munsell No. 5B 7/1. The color of the final finish coat for the exterior and bottom flange of the fascia beams shall be Reddish Brown, Munsell No. 2.5YR 3/4.

The existing structural steel coating contains lead. The Contractor shall take appropriate precautions to deal with the presence of lead on this project.

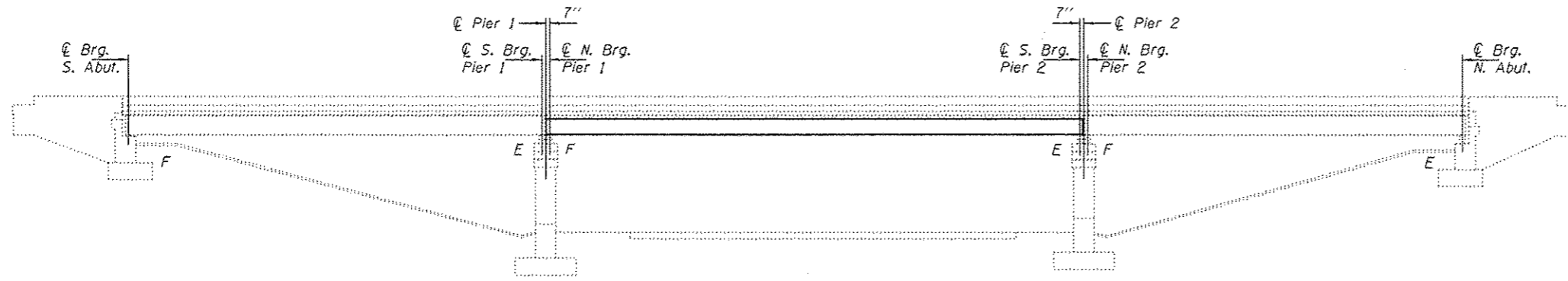
Existing structural steel that will be in contact with new structural steel shall be cleaned and painted prior to erection as required by the GBSP "Cleaning and Painting Contact Surface Areas of Existing Steel Structures".

The Contractor shall provide support and/or shoring systems for the slab and beam in the area of existing beam removal. See Special Provision "Temporary Slab Support System."

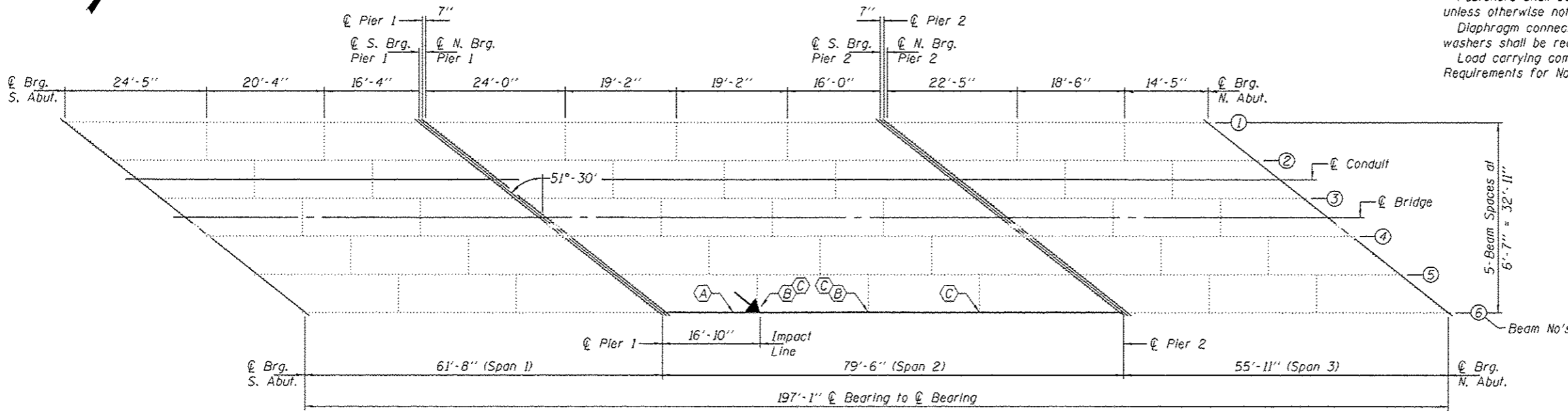
Fasteners shall be high strength bolts. Bolts 7/8"φ, open holes 15/16"φ, unless otherwise noted.

Diaphragm connection holes shall be 15/16"φ for 3/4"φ bolts. Two hardened washers shall be required at diaphragm connections.

Load carrying components designated "NTR" shall conform to the Supplemental Requirements for Notch Toughness, Zone 2.



ELEVATION



FRAMING PLAN

- (A) - Remove & Replace Partial Beam Segment
- (B) - Remove & Replace Bottom Clip Angles
- (C) - Remove Top Clip Angle & Install Side Clip Angles



Expires November 30, 2014

DESIGNED - *[Signature]*
 CHECKED - *[Signature]*
 DRAWN - Kyle M. Staffen
 CHECKED - *[Signature]*

EXAMINED - *[Signature]*
 PASSED - *[Signature]*
 ACTING ENGINEER OF BRIDGES AND STRUCTURES

DATE - NOVEMBER 15 2013

STATE OF ILLINOIS
 DEPARTMENT OF TRANSPORTATION

GENERAL PLAN & ELEVATION
 ILLINOIS ROUTE 171 - ARCHER AVENUE (WB) OVER RAMP A
 SN 016-0209

SHEET NO. 1 OF 3 SHEETS

F.A. RTE.	SECTION	COUNTY	TOTAL SHEETS	SHEET NO.
VAR	2013-044BR	COOK	35	12
CONTRACT NO. 60W94			ILLINOIS FED. AID PROJECT	

TOTAL BILL OF MATERIAL

ITEM	UNIT	QUANTITY
Structural Steel Removal	Pound	11,700
Furnishing & Erecting Structural Steel	Pound	13,700
Temporary Slab Support System	L.S.	0.33