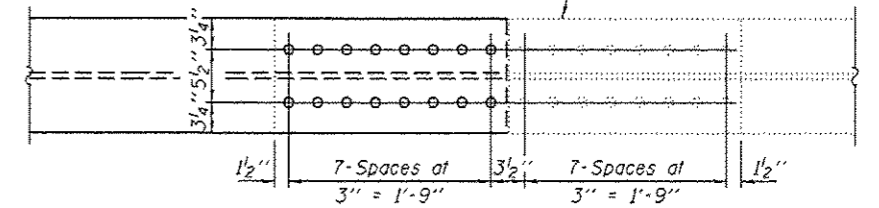
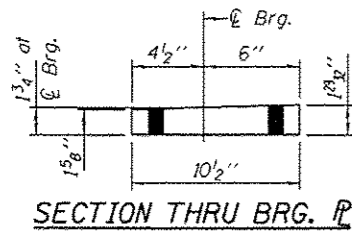


**SPAN 1, BEAM 12 ELEVATION**

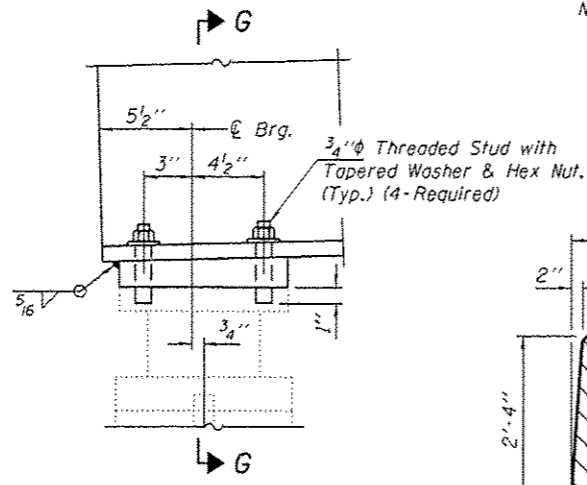
Notes:  
 Natural camber of new beam shall be placed upward for fabrication.  
 All holes to be field drilled using holes in existing steel as template.



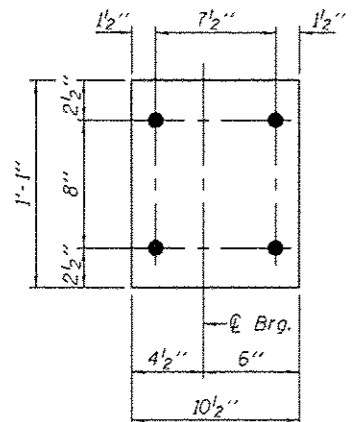
**FLANGE SPLICE DETAIL**



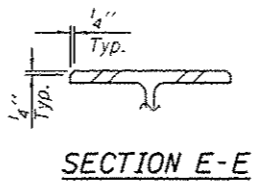
**SECTION THRU BRG. P**



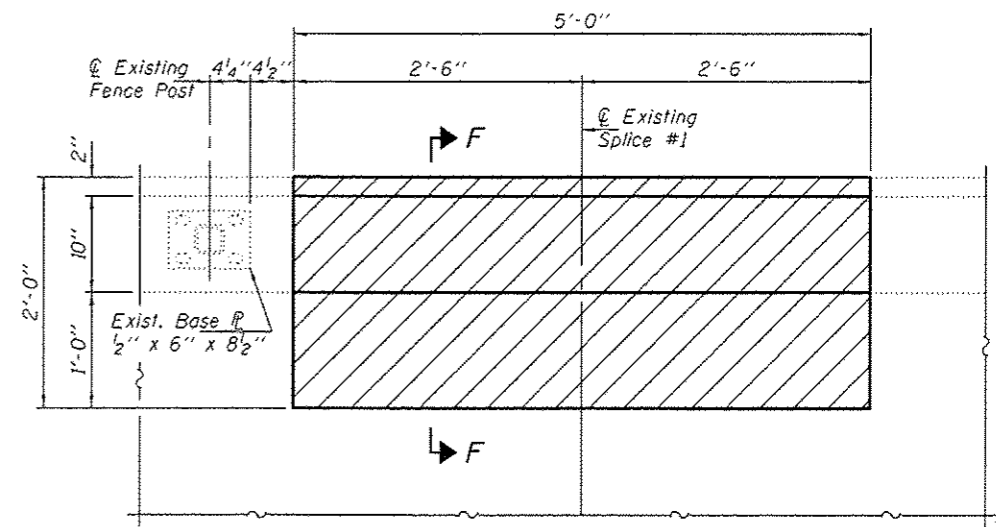
**ELEVATION AT BEARING**



**BEARING P PLAN**

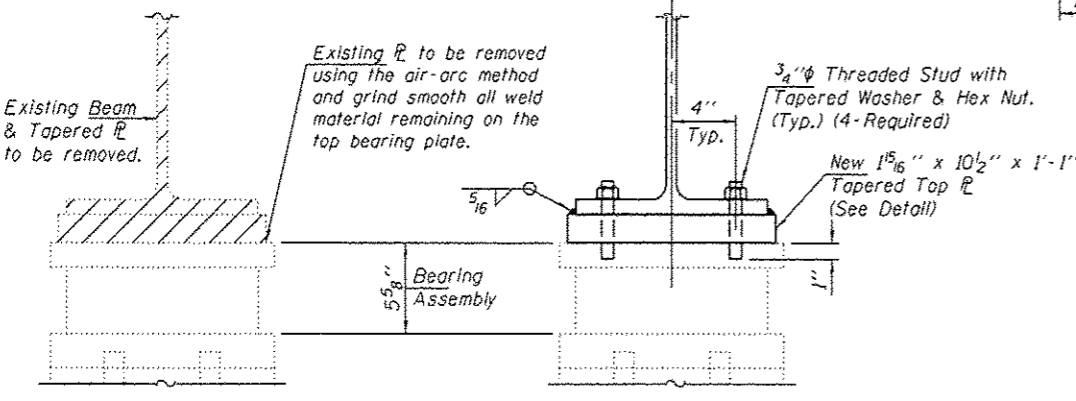


**SECTION E-E**



**CONCRETE SURFACE REMOVAL AND REPLACEMENT**

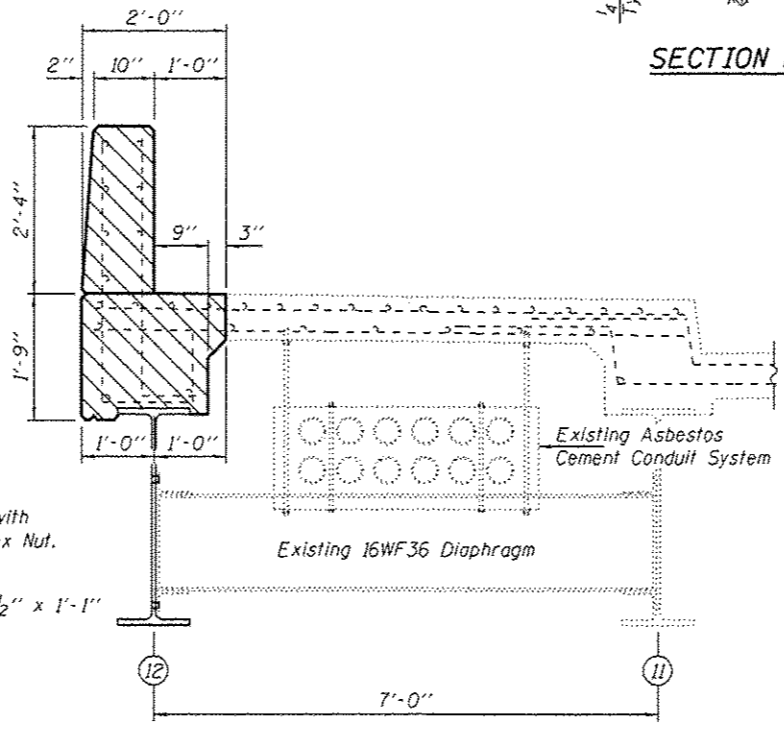
Hatched areas indicate concrete sections to be removed and replaced. Perimeters of concrete removal areas shall be saw cut 3/4" prior to the removal of concrete. Reinforcement shall be cut only if required for fitting bolts. Cut reinforcement shall be spliced as directed by the Engineer. Cost shall be included with Concrete Removal.



**BEARING P REMOVAL**

Hatched area indicates Structural Steel Removal.

**SECTION G-G**



**SECTION F-F**

DESIGNED - DAB	EXAMINED - <i>Timothy A. Anhalt</i>	DATE - NOVEMBER 15, 2013	STATE OF ILLINOIS DEPARTMENT OF TRANSPORTATION		BEAM 12 REPLACEMENT DETAILS SN 016-2068		F.A. RTE.	SECTION	COUNTY	TOTAL SHEETS	SHEET NO.
CHECKED - TLC	PASSED - <i>Carl Perry</i>						VAR	2013-044BR	COOK	35	25
DRAWN - Kyle M. Steffan	ACTING ENGINEER OF BRIDGES AND STRUCTURES		SHEET NO. 4 OF 7 SHEETS		CONTRACT NO. 60W94		ILLINOIS FED. AID PROJECT				