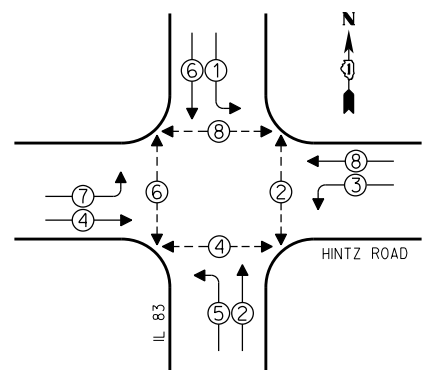
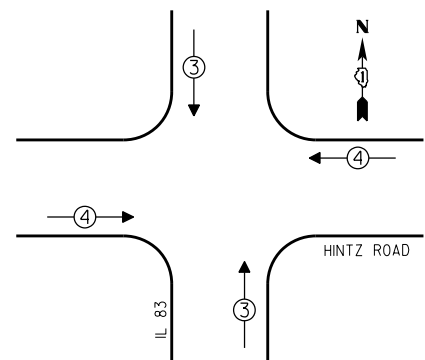


CONTROLLER SEQUENCE



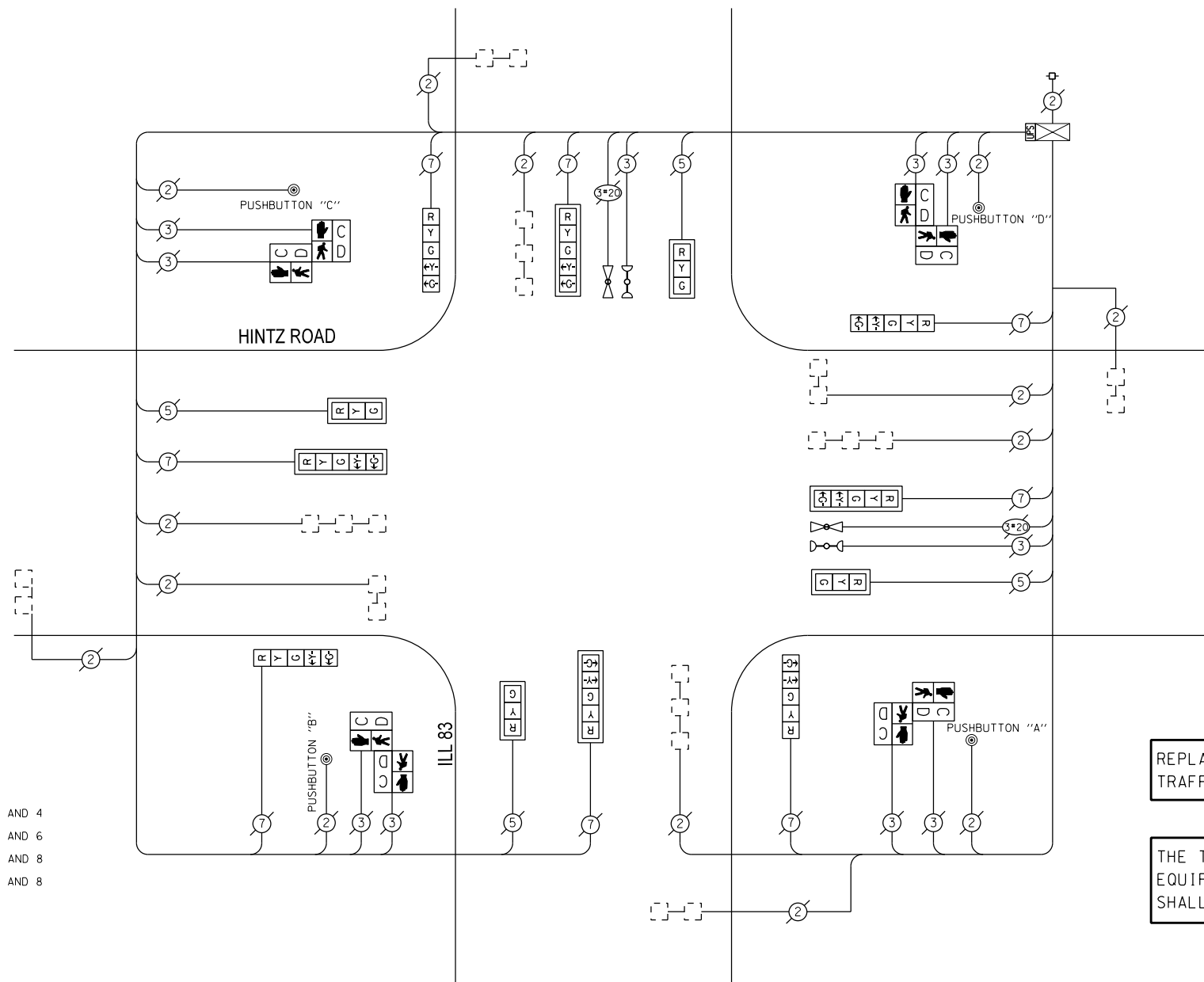
- LEGEND**
- SINGLE ENTRY PHASE
 - DUAL ENTRY PHASE
 - OVERLAP
 - PEDESTRIAN PHASE
 - * NUMBER REFERS TO ASSOCIATED PHASE

EMERGENCY VEHICLE PREEMPTION SEQUENCE



| EMERGENCY VEHICLE PREEMPTORS | | |
|------------------------------|---|---|
| EMERGENCY VEHICLE PREEMPTOR | 3 | 4 |
| MOVEMENT | ↕ | ↔ |

NOTE:
 PUSHBUTTON "A" SHALL PLACE A CALL IN PHASES 2 AND 4
 PUSHBUTTON "B" SHALL PLACE A CALL IN PHASES 4 AND 6
 PUSHBUTTON "C" SHALL PLACE A CALL IN PHASES 6 AND 8
 PUSHBUTTON "D" SHALL PLACE A CALL IN PHASES 2 AND 8



CABLE PLAN

REPLACE ALL EXISTING TRAFFIC SIGNAL HEADS

THE TRAFFIC SIGNAL CONTROL EQUIPMENT FOR THIS PROJECT SHALL BE "ECONOLITE".

| I.D.O.T. TRAFFIC SIGNAL INSTALLATION ELECTRICAL SERVICE REQUIREMENTS | | | | |
|--|--------------|---------|--------------------|----------------|
| TYPE | NO. OF LAMPS | WATTAGE | | TOTAL WATTAGE |
| | | INCAND | LED X % OPERATIONS | |
| SIGNAL (RED) | 12 | 17 | 0.50 | 102.00 |
| (YELLOW) | 12 | 25 | 0.25 | 75.00 |
| (GREEN) | 12 | 15 | 0.25 | 45.00 |
| ARROW | 16 | 12 | 0.10 | 19.20 |
| PED. SIGNAL | 8 | 25 | 1.00 | 200.00 |
| CONTROLLER | 1 | 100 | 1.00 | 100.00 |
| ILLUM. SIGN | | 25 | 0.05 | |
| LUMINAIRE | | 250 | 0.50 | |
| VIDEO SYSTEM | | 150 | 1.00 | |
| FLASHER | | | 0.50 | |
| ENERGY COSTS TO: | | | | TOTAL = 541.20 |

VILLAGE OF WHEELING
 2 COMMUNITY BOULEVARD
 WHEELING, ILLINOIS 60090

ENERGY SUPPLY - CONTACT: TERRI BLECK
 PHONE: (847) 816-5239
 COMPANY:

REMOVE EXISTING TRAFFIC SIGNAL EQUIPMENT

THE FOLLOWING ITEMS SHALL BE REMOVED BY THE CONTRACTOR AND SHALL BE DISPOSED OF BY THEM OUTSIDE THE RIGHT-OF-WAY AT THEIR EXPENSE. THE SALVAGE VALUE OF THE REMOVED EQUIPMENT SHALL BE REFLECTED IN THE CONTRACT BID PRICE.

| QUANTITY | UNIT | DESCRIPTION |
|----------|------|--------------------------------|
| 4 | EACH | SIGNAL HEAD, I-FACE, 3-SECTION |
| 8 | EACH | SIGNAL HEAD, I-FACE, 5-SECTION |
| 4 | EACH | PEDESTRIAN SIGNAL HEAD, 2-FACE |
| 4 | EACH | PEDESTRIAN PUSHBUTTON |
| 8 | EACH | TRAFFIC SIGNAL BACKPLATE |

SCHEDULE OF QUANTITIES

| QUAN. | UNIT | ITEM |
|-------|------|---|
| 1 | EACH | MAINTENANCE OF EXISTING TRAFFIC SIGNAL INSTALLATION |
| 4 | EACH | SIGNAL HEAD, LED, I-FACE, 3-SECTION, MAST ARM MOUNTED |
| 4 | EACH | SIGNAL HEAD, LED, I-FACE, 5-SECTION, BRACKET MOUNTED |
| 4 | EACH | SIGNAL HEAD, LED, I-FACE, 5-SECTION, MAST ARM MOUNTED |
| 4 | EACH | PEDESTRIAN SIGNAL HEAD, LED, 2-FACE, BRACKET MOUNTED WITH COUNTDOWN TIMER |
| 8 | EACH | TRAFFIC SIGNAL BACKPLATE, LOUVERED, ALUMINUM |
| 4 | EACH | PEDESTRIAN PUSH-BUTTON, NON-LATCHING |
| 1 | EACH | MODIFY EXISTING CONTROLLER CABINET |
| 1 | EACH | REMOVE EXISTING TRAFFIC SIGNAL EQUIPMENT |
| 1 | EACH | UNINTERRUPTIBLE POWER SUPPLY, SPECIAL |

| | |
|-----------------|-----------|
| DESIGNED - JAM | REVISED - |
| DRAWN - JAM | REVISED - |
| CHECKED - LMM | REVISED - |
| DATE - 10-14-13 | REVISED - |

STATE OF ILLINOIS
 DEPARTMENT OF TRANSPORTATION

SCHEDULE OF QUANTITIES, CABLE PLAN, PHASE DESIGNATION
 DIAGRAM, AND EMERGENCY VEHICLE PREEMPTION SEQUENCE,
 IL RTE 83 ELMHURST ROAD AT HINTZ ROAD

SCALE: NONE SHEET OF SHEETS STA. TO STA.

| F.A. RTE. | SECTION | COUNTY | TOTAL SHEETS | SHEET NO. |
|-----------|------------|--------|--------------|--------------------|
| VAR | 2013-054TS | COOK | 99 | 89 |
| | | | | CONTRACT NO. 60X15 |

ILLINOIS FED. AID PROJECT

SAM SCHWARTZ ENGINEERING
 3100 W. HIGGINS, STE. 100, HOFFMAN ESTATES, IL 60169

