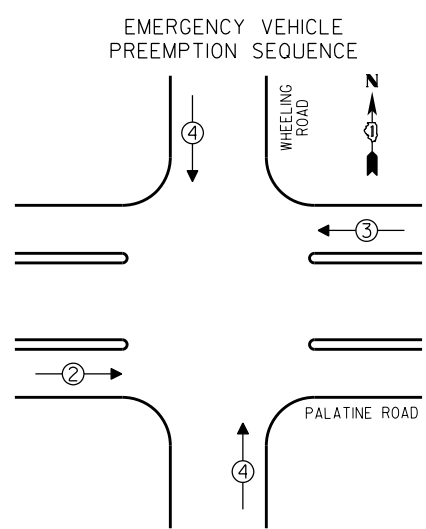


LEGEND

- ◻ → SINGLE ENTRY PHASE
- ⊙ → DUAL ENTRY PHASE
- ⊕ → OVERLAP
- ⊙ → PEDESTRIAN PHASE
- * NUMBER REFERS TO ASSOCIATED PHASE

PHASE DESIGNATION DIAGRAM



| EMERGENCY VEHICLE PREEMPTORS | | | |
|------------------------------|---|---|---|
| EMERGENCY VEHICLE PREEMPTOR | 2 | 3 | 4 |
| MOVEMENT | → | ← | ↕ |

| I.D.O.T. TRAFFIC SIGNAL INSTALLATION ELECTRICAL SERVICE REQUIREMENTS | | | | | TOTAL WATTAGE |
|--|--------------|--------|------------------|------|----------------|
| TYPE | NO. OF LAMPS | INCAND | LED % OPERATIONS | | |
| SIGNAL (RED) | 20 | | 17 | 0.50 | 170.00 |
| (YELLOW) | 20 | | 25 | 0.25 | 125.00 |
| (GREEN) | 24 | | 15 | 0.25 | 90.00 |
| ARROW | 8 | | 12 | 0.10 | 9.60 |
| PED. SIGNAL | | | 25 | 1.00 | |
| CONTROLLER | 1 | | 100 | 1.00 | 100.00 |
| ILLUM. SIGN | | | 25 | 0.05 | |
| LUMINAIRE | | 250 | | 0.50 | |
| VIDEO SYSTEM | | 150 | | 1.00 | |
| FLASHER | | | | 0.50 | |
| ENERGY COSTS TO: | | | | | TOTAL = 494.60 |

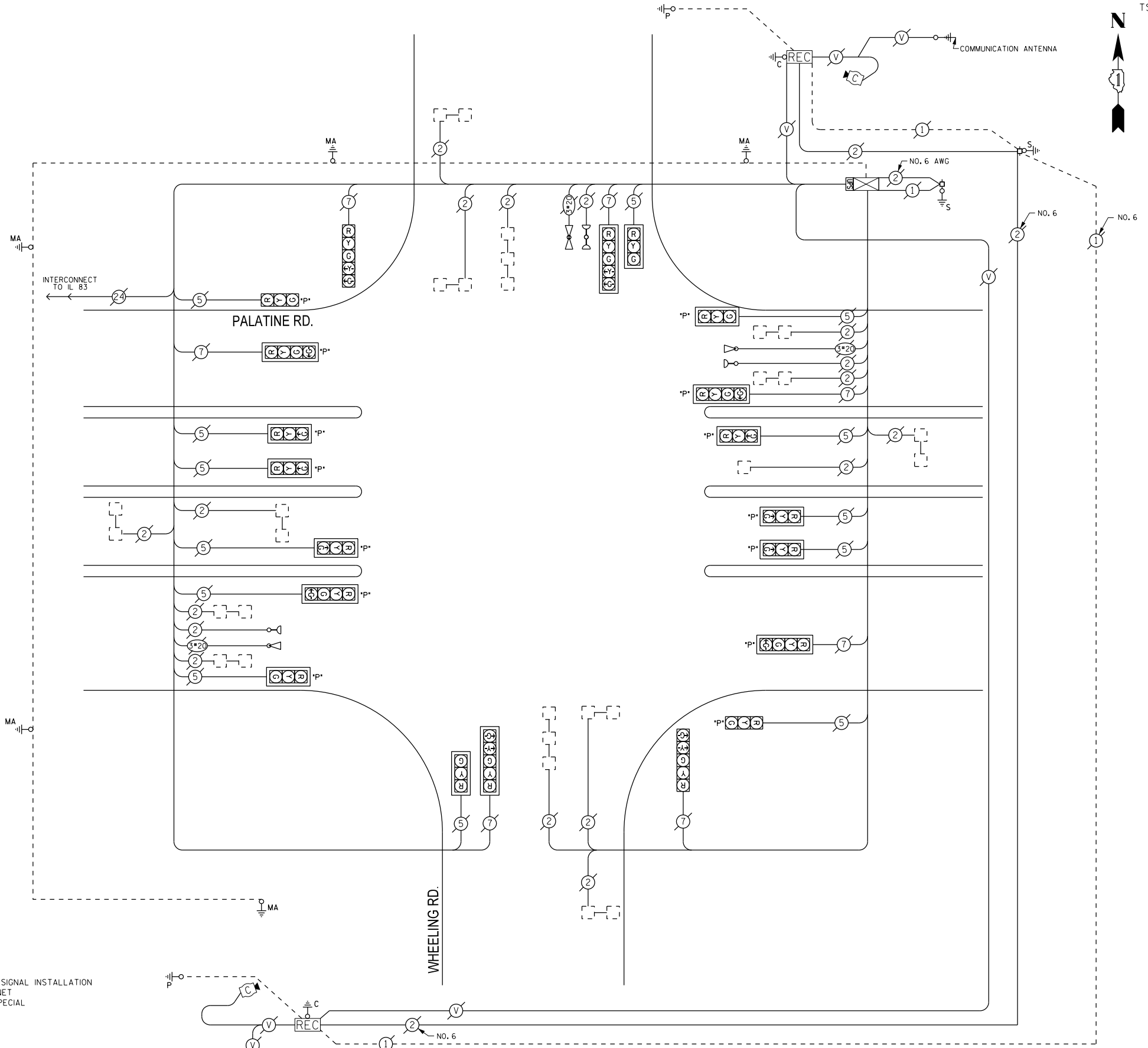
VILLAGE OF WHEELING
2 COMMUNITY BOULEVARD
WHEELING, ILLINOIS 60090

ENERGY SUPPLY - CONTACT: TERRI BLECK
PHONE: (847) 816-5239
COMPANY:

THE TRAFFIC SIGNAL CONTROL EQUIPMENT FOR THIS PROJECT SHALL BE "ECONOLITE".

SCHEDULE OF QUANTITIES

| QUAN. | UNIT | ITEM |
|-------|------|---|
| 1 | EACH | MAINTENANCE OF EXISTING TRAFFIC SIGNAL INSTALLATION |
| 1 | EACH | MODIFY EXISTING CONTROLLER CABINET |
| 1 | EACH | UNINTERRUPTIBLE POWER SUPPLY, SPECIAL |



| | |
|-----------------|-----------|
| DESIGNED - JAM | REVISED - |
| DRAWN - JAM | REVISED - |
| CHECKED - LMM | REVISED - |
| DATE - 10-14-13 | REVISED - |

**STATE OF ILLINOIS
DEPARTMENT OF TRANSPORTATION**

**SCHEDULE OF QUANTITIES, CABLE PLAN, PHASE DESIGNATION
DIAGRAM, AND EMERGENCY VEHICLE PREEMPTION SEQUENCE,
PALATINE ROAD AT WHEELING ROAD**

SCALE: NONE SHEET OF SHEETS STA. TO STA.

| F.A. RTE. | SECTION | COUNTY | TOTAL SHEETS | SHEET NO. |
|---------------------------|------------|--------|--------------|-----------|
| VAR | 2013-054TS | COOK | 99 | 92 |
| CONTRACT NO. 60X15 | | | | |
| ILLINOIS FED. AID PROJECT | | | | |

