

F.A.P. RTE.	SECTION	COUNTY	TOTAL SHEETS	SHEET NO.
	2013-055TS	COOK	73	1

STATE OF ILLINOIS
DEPARTMENT OF TRANSPORTATION
DIVISION OF HIGHWAYS

**PROPOSED
HIGHWAY PLANS**

VARIOUS LOCATIONS IN NORTH COOK COUNTY
LIGHT EMITTING DIODE (LED) INSTALLATION
CONTRACT #5

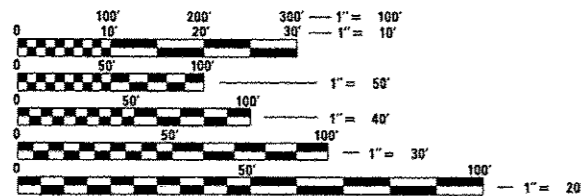
SECTION 2013-055TS
COOK COUNTY
C-91-021-14



FOR INDEX OF SHEETS, SEE SHEET NO. 2

HIGHWAY STANDARD

- 701001-02 OFF-ROAD OPERATIONS, 2L, 2W, MORE THAN 15' (4.5 m) AWAY
- 701006-05 OFF-ROAD OPERATIONS, 2L, 2W, 15' (4.5m) TO 24" (600 mm) FROM PAVEMENT EDGE
- 701701-09 URBAN LANE CLOSURE, MULTILANE INTERSECTION
- 701901-03 TRAFFIC CONTROL DEVICES
- 720001-01 SIGN PANEL MOUNTING DETAILS
- 720006-04 SIGN PANEL ERECTION DETAIL
- 857001-01 STANDARD PHASE DESIGNATION DIAGRAMS AND PHASE SEQUENCES
- 862001-01 UNINTERRUPTABLE POWER SUPPLY
- 880006-01 TRAFFIC SIGNAL MOUNTING DETAILS

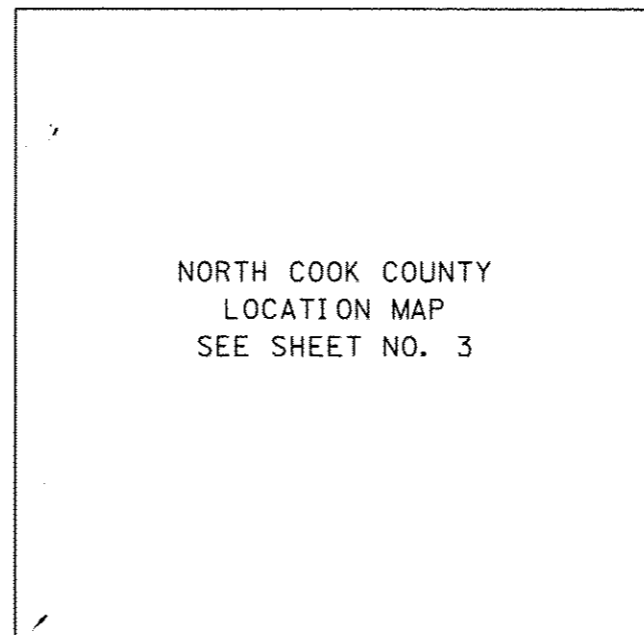


FULL SIZE PLANS HAVE BEEN PREPARED USING STANDARD ENGINEERING SCALES. REDUCED SIZED PLANS WILL NOT CONFORM TO STANDARD SCALES. IN MAKING MEASUREMENTS ON REDUCED PLANS, THE ABOVE SCALES MAY BE USED.

J.U.L.I.E.
JOINT UTILITY LOCATING INFORMATION FOR EXCAVATORS
1-800-892-0123
OR 811

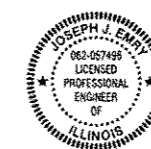
PROJECT ENGINEER: STEVEN NGUYEN (847) 705-4184
PROJECT MANAGER: SUDUD MAHMOUD (847) 705-4420

CONTRACT NO. 60X16



NORTH COOK COUNTY
LOCATION MAP
SEE SHEET NO. 3

LOCATION MAP



SIGNED *Joseph Emry*
JOSEPH EMBRY, D.E. IL LIC. NO. 062-057496
EXPIRES 11-30-2013
DATE 10/10/13

STATE OF ILLINOIS
DEPARTMENT OF TRANSPORTATION
DIVISION OF HIGHWAYS

SUBMITTED Oct 11 2013
John Furthman
DEPUTY DIRECTOR OF HIGHWAYS, REGION ENGINEER

Dec 6 2013
John D. Baranella, P.E.
actg ENGINEER OF DESIGN AND ENVIRONMENT

Dec 6 2013
Omer Osman, P.E.
DIRECTOR OF HIGHWAYS, CHIEF ENGINEER

PRINTED BY AUTHORITY
OF THE STATE OF ILLINOIS

PLANS PREPARED BY:



450 E. Devon Ave, Suite 300 - Itasca, Illinois 60143
Tel: 630.773.3900 - Fax: 630.773.3975
www.civiltechinc.com