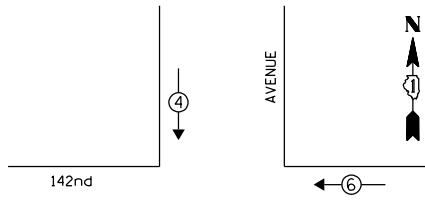


DATE: \_\_\_\_\_ BY: \_\_\_\_\_  
 SURVEYED: \_\_\_\_\_ GRADES CHECKED: \_\_\_\_\_  
 ALIGNED: \_\_\_\_\_ RT. OF WAY CHECKED: \_\_\_\_\_  
 NOTE BOOK NO.: \_\_\_\_\_  
 FILE NAME: \_\_\_\_\_

ENGINEERING LTD.  
**CHRISTOPHER B. BURKE**  
 8575 West Higgins Road, Suite 600  
 Rosemont, Illinois 60018  
 (617) 823-5500

DATE: \_\_\_\_\_ BY: \_\_\_\_\_  
 SURVEYED: \_\_\_\_\_ GRADES CHECKED: \_\_\_\_\_  
 ALIGNED: \_\_\_\_\_ RT. OF WAY CHECKED: \_\_\_\_\_  
 NOTE BOOK NO.: \_\_\_\_\_  
 FILE NAME: \_\_\_\_\_

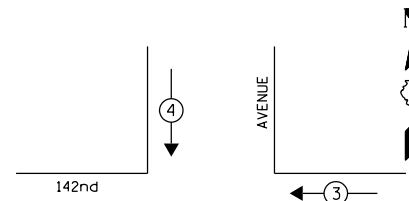
EXISTING CONTROLLER SEQUENCE



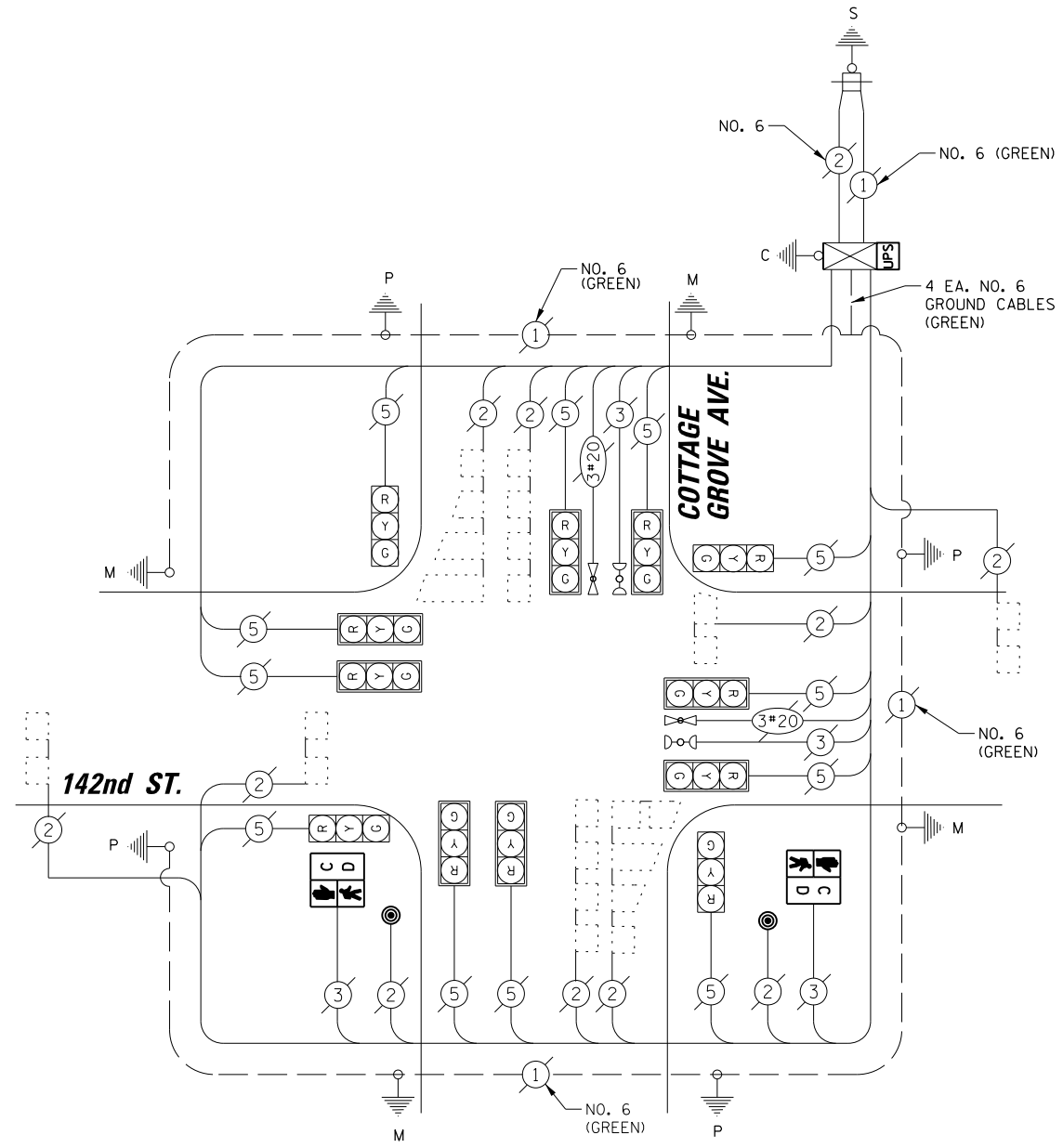
- LEGEND**
- ⊛ DUAL ENTRY PHASE
  - ⊙ SINGLE ENTRY PHASE
  - OL OVERLAP
  - ⊙ PEDESTRIAN PHASE
  - \* NUMBER REFERS TO ASSOCIATED PHASE

PHASE DESIGNATION DIAGRAM

EXISTING EMERGENCY VEHICLE PREEMPTION SEQUENCE



EMERGENCY VEHICLE PREEMPTORS		
EMERGENCY VEHICLE PREEMPTOR	3	4
MOVEMENT	← →	↓ ↑



**CABLE PLAN**

I.D.O.T. TRAFFIC SIGNAL INSTALLATION ELECTRICAL SERVICE REQUIREMENTS					TOTAL WATTAGE
TYPE	NO. OF LAMPS	WATTAGE		% OPERATION	
		INCAND.	LED		
SIGNAL (RED)	12		17	0.50	102.00
(YELLOW)	12		25	0.25	75.00
(GREEN)	12		15	0.25	45.00
ARROW	-		12	0.10	-
PED. SIGNAL	2		25	1.00	50.00
CONTROLLER	1		100	1.00	100.00
ILLUMINATED SIGN	-		25	0.05	-
VIDEO SYSTEM	-		150	1.00	-
LUMINAIRE	-	250		0.50	-
BATTERY BACKUP	1	25		1.00	25.00
FLASHER	-			0.50	-
ENERGY COSTS TO:				TOTAL =	397.00

**REMOVAL OF EXISTING TRAFFIC SIGNAL EQUIPMENT**

THE FOLLOWING ITEMS SHALL BE REMOVED BY THE CONTRACTOR AND SHALL BE DISPOSED OF BY THEM OUTSIDE THE RIGHT-OF-WAY AT THEIR EXPENSE. THE SALVAGE VALUE OF THE REMOVED EQUIPMENT SHALL BE REFLECTED IN THE CONTRACT BID PRICE.

- 2 EACH PEDESTRIAN SIGNAL HEAD, 1-FACE
- 2 EACH PEDESTRIAN PUSH-BUTTON

**SCHEDULE OF QUANTITIES**

ITEM	UNIT	QUANTITY
MAINTENANCE OF EXISTING TRAFFIC SIGNAL INSTALLATION	EACH	1
PEDESTRIAN SIGNAL HEAD, LED, 1-FACE, BRACKET MOUNTED WITH COUNTDOWN TIMER	EACH	2
PEDESTRIAN PUSH-BUTTON	EACH	2
MODIFY EXISTING CONTROLLER CABINET	EACH	1
REMOVE EXISTING TRAFFIC SIGNAL EQUIPMENT	EACH	1
UNINTERRUPTIBLE POWER SUPPLY, SPECIAL	EACH	1

**ILLINOIS DEPARTMENT OF TRANSPORTATION**  
 DIVISION OF HIGHWAY/DISTRICT 1  
 201 WEST CENTER COURT/SCHAUMBURG, ILLINOIS 60196  
 ENERGY SUPPLY: CONTACT: **BRAD SHINABARGAR**  
 PHONE: (708)-235-2692  
 COMPANY: **COMED**

FILE NAME =	USER NAME = fpaceione	DESIGNED - EAJ	REVISED -
N:\dot\130116\Work Order 13019 - South Cook County LED Traffic\CAB_142nd-Cottage Grove	DRAWN - FPB / FCP	CHECKED - GMZ	REVISED -
	PLOT SCALE = 48"	DATE - SEPT. , 2013	REVISED -
	PLOT DATE = 10/7/2013		

**STATE OF ILLINOIS DEPARTMENT OF TRANSPORTATION**

**SCHEDULE OF QUANTITIES, CABLE PLAN, PHASE DESIGNATION DIAGRAM AND EMERGENCY VEHICLE PREEMPTION SEQUENCE**  
**142nd STREET AT COTTAGE GROVE AVENUE**

SCALE: SHEET NO. OF SHEETS STA. TO STA.

F.A.P. RTE.	SECTION	COUNTY	TOTAL SHEETS	SHEET NO.
	VARIOUS	COOK	87	34
FED. ROAD DIST. NO. ILLINOIS FED. AID PROJECT			CONTRACT NO. 60X24	

TS # 12105  
 DOLTON