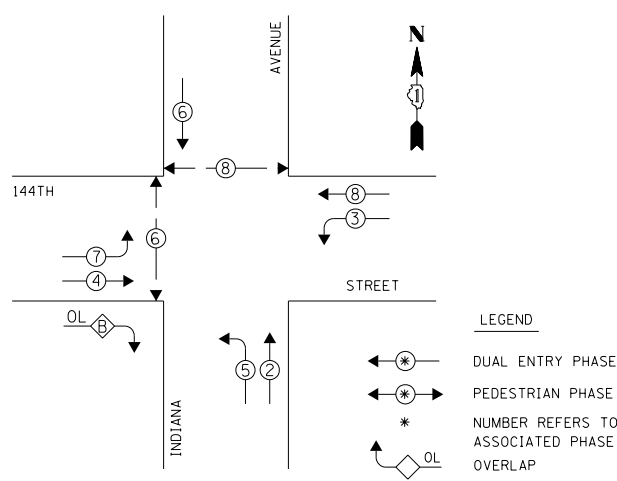


DATE: \_\_\_\_\_ BY: \_\_\_\_\_  
 SURVEYED: \_\_\_\_\_ GRADES CHECKED: \_\_\_\_\_  
 ALIGNED: \_\_\_\_\_ RT. OF WAY CHECKED: \_\_\_\_\_  
 NOTE BOOK NO. \_\_\_\_\_  
 PROJECT: \_\_\_\_\_  
 STRUCTURE NOTATIONS: OK/NO

CHRISTOPHER B. BURKE ENGINEERING LTD.  
 8575 West Higgins Road, Suite 600  
 Rosemont, Illinois 60018  
 (617) 823-5930

EXISTING CONTROLLER SEQUENCE

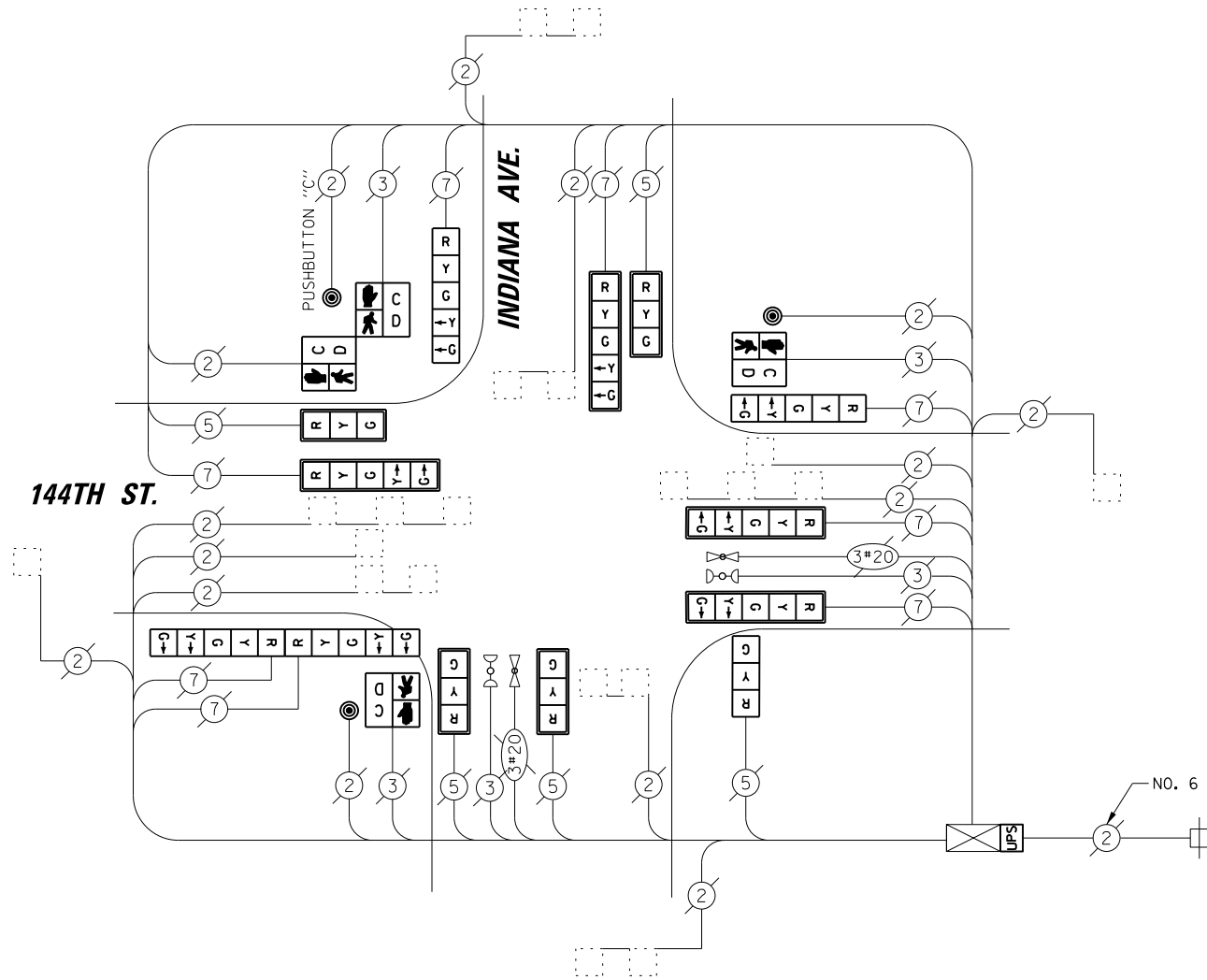
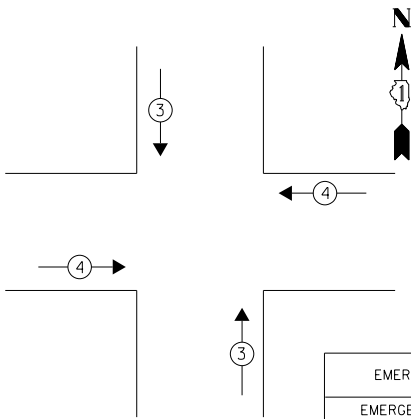


PHASE DESIGNATION DIAGRAM

RIGHT TURN OVERLAP PHASE DESIGNATION

OVERLAP LETTER	PERMISSIVE PHASE	PROTECTED PHASE
B	= 4	+ 5

EXISTING EMERGENCY VEHICLE PREEMPTION SEQUENCE



RETROFIT ALL EXISTING SIGNAL HEADS TO L.E.D.

CABLE PLAN

REMOVAL OF EXISTING TRAFFIC SIGNAL EQUIPMENT

THE FOLLOWING ITEMS SHALL BE REMOVED BY THE CONTRACTOR AND SHALL BE DISPOSED OF BY THEM OUTSIDE THE RIGHT-OF-WAY AT THEIR EXPENSE. THE SALVAGE VALUE OF THE REMOVED EQUIPMENT SHALL BE REFLECTED IN THE CONTRACT BID PRICE.

- 1 EACH PEDESTRIAN SIGNAL HEAD, 2-FACE
- 2 EACH PEDESTRIAN SIGNAL HEAD, 1-FACE.
- 3 EACH PEDESTRIAN PUSH-BUTTON

NOTE:  
 PUSHBUTTON "C" SHALL PLACE A CALL IN PHASES 6 AND 8.

SCHEDULE OF QUANTITIES

ITEM	UNIT	QUANTITY
MAINTENANCE OF EXISTING TRAFFIC SIGNAL INSTALLATION	EACH	1
PEDESTRIAN SIGNAL HEAD, LED, 1-FACE, BRACKET MOUNTED WITH COUNTDOWN TIMER	EACH	2
PEDESTRIAN SIGNAL HEAD, LED, 2-FACE, BRACKET MOUNTED WITH COUNTDOWN TIMER	EACH	1
MODIFY EXISTING CONTROLLER CABINET	EACH	1
REMOVE EXISTING TRAFFIC SIGNAL EQUIPMENT	EACH	1
UNINTERRUPTABLE POWER SUPPLY, SPECIAL	EACH	1
PEDESTRIAN PUSH-BUTTON, NON-LATCHING	EACH	3
SIGNAL HEAD, LED, 1-FACE, 3-SECTION, BRACKET MOUNTED, RETROFIT	EACH	1
SIGNAL HEAD, LED, 1-FACE, 3-SECTION, MAST ARM MOUNTED, RETROFIT	EACH	4
SIGNAL HEAD, LED, 1-FACE, 5-SECTION, MAST ARM MOUNTED, RETROFIT	EACH	4
SIGNAL HEAD, LED, 1-FACE, 5-SECTION, BRACKET MOUNTED, RETROFIT	EACH	2
SIGNAL HEAD, LED, 2-FACE, 5-SECTION, BRACKET MOUNTED RETROFIT	EACH	1

I.D.O.T. TRAFFIC SIGNAL INSTALLATION ELECTRICAL SERVICE REQUIREMENTS					TOTAL WATTAGE
TYPE	NO. OF LAMPS	WATTAGE X INCAND.	LED	% OPERATION	
SIGNAL (RED)	13		17	0.50	110.50
(YELLOW)	13		25	0.25	81.25
(GREEN)	13		15	0.25	48.75
ARROW	16		12	0.10	19.20
PED. SIGNAL	4		25	1.00	100.00
CONTROLLER	1		100	1.00	100.00
ILLUMINATED SIGN	-		25	0.05	-
VIDEO SYSTEM	-		150	1.00	-
LUMINAIRE	-	250		0.50	-
BATTERY BACKUP	1	25		1.00	25.0
FLASHER				0.50	-
ENERGY COSTS TO:				TOTAL =	484.45

VILLAGE OF DOLTON  
 14014 PARK AVENUE  
 DOLTON, IL 60419  
 ENERGY SUPPLY: CONTACT: BRAD SHINABARGAR  
 PHONE: (708)-235-2692  
 COMPANY: COMED

FILE NAME = N:\dot\130116\Work Order 13019 - South Cook County LED\Traffic\CAB_144th-Indiana.sht	USER NAME = fpacione	DESIGNED - EAJ	REVISED -
PLOT SCALE = 48"		DRAWN - FPB / FCP	REVISED -
PLOT DATE = 10/7/2013		CHECKED - GMZ	REVISED -
		DATE - SEPT. , 2013	REVISED -

STATE OF ILLINOIS  
 DEPARTMENT OF TRANSPORTATION

SCHEDULE OF QUANTITIES, CABLE PLAN, PHASE DESIGNATION  
 DIAGRAM AND EMERGENCY VEHICLE PREEMPTION SEQUENCE  
 144th STREET AT INDIANA AVENUE

SCALE: SHEET NO. OF SHEETS STA. TO STA.

F.A.P. RTE.	SECTION	COUNTY	TOTAL SHEETS	SHEET NO.
	VARIOUS	COOK	87	40
FED. ROAD DIST. NO. ILLINOIS FED. AID PROJECT			CONTRACT NO. 60X24	

TS # 13090  
 DOLTON