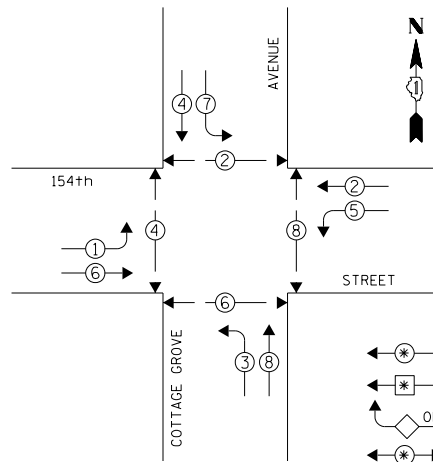


PROFILE SURVEYED GRADES CHECKED  
 NOTE BOOK NO. \_\_\_\_\_  
 STRUCTURE NOTATIONS OKWD  
 BY: \_\_\_\_\_ DATE: \_\_\_\_\_  
 CHRISTOPHER B. BURKE ENGINEERING LTD.  
 8575 West Higgins Road, Suite 600  
 Rosemont, Illinois 60018  
 (647) 923-5500

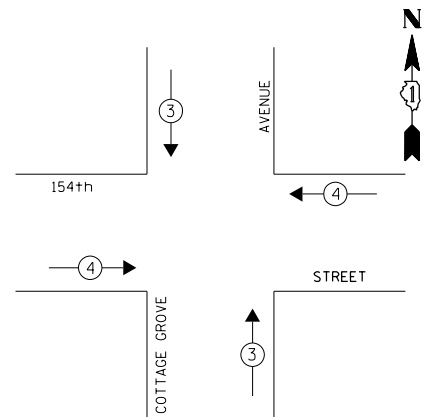
EXISTING CONTROLLER SEQUENCE



PHASE DESIGNATION DIAGRAM

- LEGEND
- DUAL ENTRY PHASE
  - SINGLE ENTRY PHASE
  - OVERLAP
  - PEDESTRIAN PHASE
  - NUMBER REFERS TO ASSOCIATED PHASE

EXISTING EMERGENCY VEHICLE PREEMPTION SEQUENCE



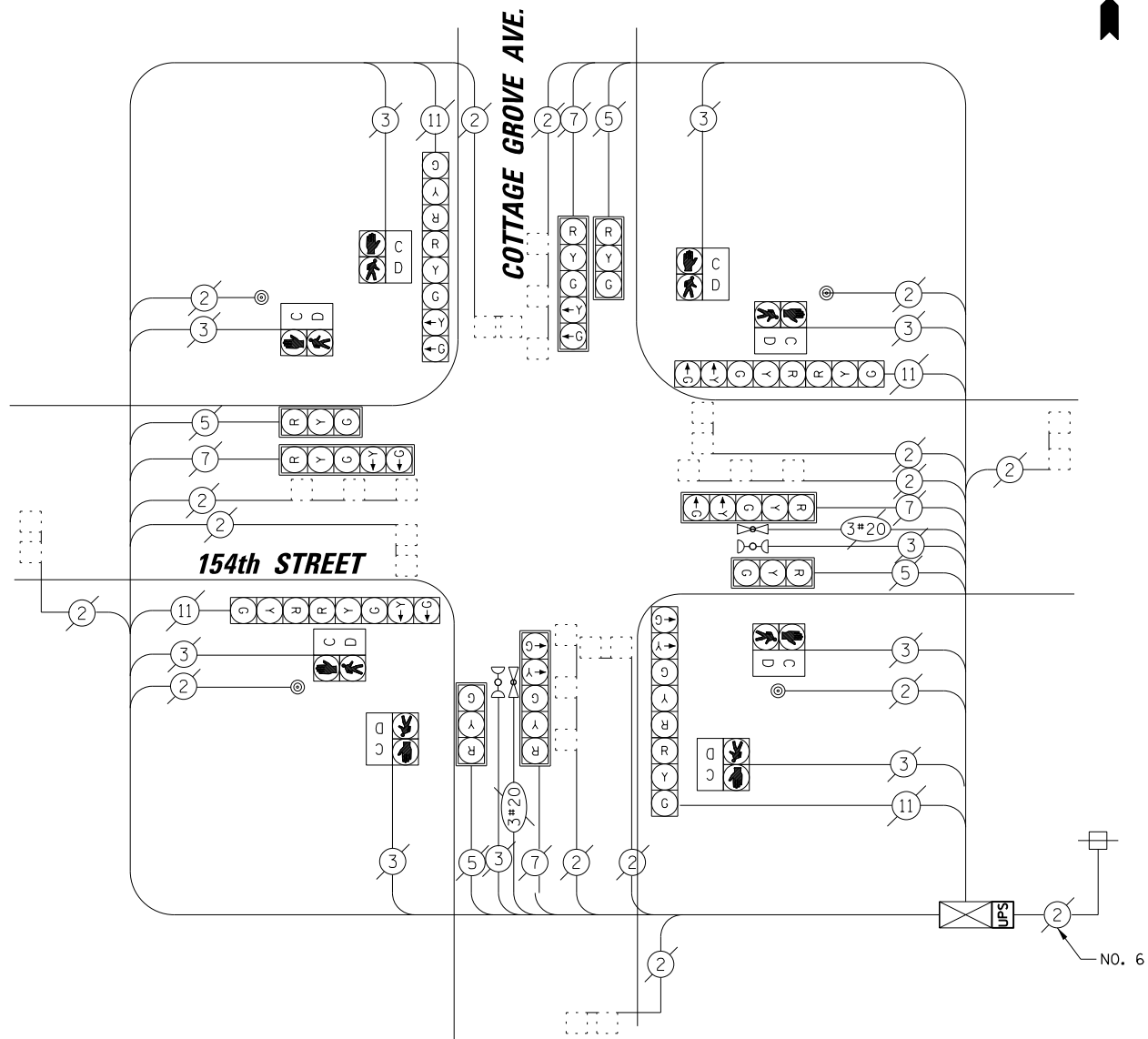
EXISTING EMERGENCY VEHICLE PREEMPTORS			
EMERGENCY VEHICLE PREEMPTOR	3	4	
MOVEMENT	↓ ↑	← →	

I.D.O.T. TRAFFIC SIGNAL INSTALLATION ELECTRICAL SERVICE REQUIREMENTS					TOTAL WATTAGE
TYPE	NO. OF LAMPS	WATTAGE		% OPERATION	
		INCAND.	LED		
SIGNAL (RED)	16		17	0.50	136.00
(YELLOW)	16		25	0.25	100.00
(GREEN)	16		15	0.25	60.00
ARROW	16		12	0.10	19.20
PED. SIGNAL	8		25	1.00	200.00
CONTROLLER	1		100	1.00	100.00
ILLUMINATED SIGN	-		25	0.05	-
VIDEO SYSTEM	-		150	1.00	-
LUMINAIRE	-	250		0.50	-
BATTERY BACKUP	1	25		1.00	25.0
FLASHER	-			0.50	-
ENERGY COSTS TO:				TOTAL =	640.20

VILLAGE OF DOLTON

14014 PARK AVENUE  
DOLTON, IL 60419

ENERGY SUPPLY: CONTACT: BRAD SHINABARGAR  
PHONE: (708)-235-2692  
COMPANY: COMED



CABLE PLAN

SCHEDULE OF QUANTITIES

ITEM	UNIT	QUANTITY
MAINTENANCE OF EXISTING TRAFFIC SIGNAL INSTALLATION	EACH	1
MODIFY EXISTING CONTROLLER CABINET	EACH	1
UNINTERRUPTABLE POWER SUPPLY, SPECIAL	EACH	1

FILE NAME =	USER NAME = fpaceione	DESIGNED - EAJ	REVISED -
N:\dot\130116\Work Order 13019 - South Cook County LED\Traffic\CAB.CottageGrove-154th		DRAWN - FPB / FCP	REVISED -
	PLOT SCALE = 48"	CHECKED - GMZ	REVISED -
	PLOT DATE = 10/7/2013	DATE - SEPT. , 2013	REVISED -

STATE OF ILLINOIS  
DEPARTMENT OF TRANSPORTATION

SCHEDULE OF QUANTITIES, CABLE PLAN, PHASE DESIGNATION  
DIAGRAM AND EMERGENCY VEHICLE PREEMPTION SEQUENCE  
COTTAGE GROVE AVENUE AT 154TH STREET

SCALE: SHEET NO. OF SHEETS STA. TO STA.

F.A.P. RTE.	SECTION	COUNTY	TOTAL SHEETS	SHEET NO.
	VARIOUS	COOK	87	41
FED. ROAD DIST. NO.			ILLINOIS FED. AID PROJECT	
			CONTRACT NO. 60X24	

TS # 11480  
DOLTON