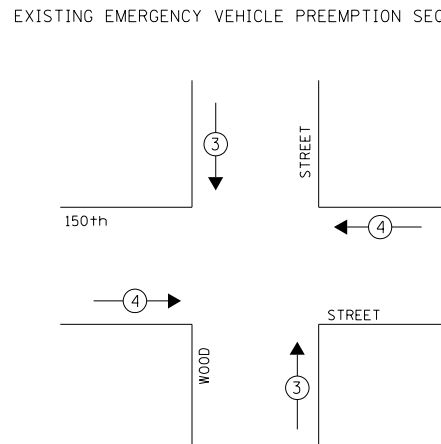
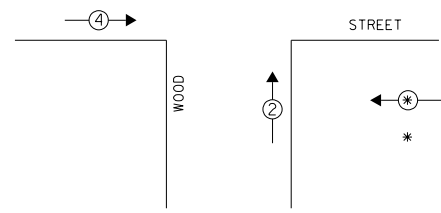
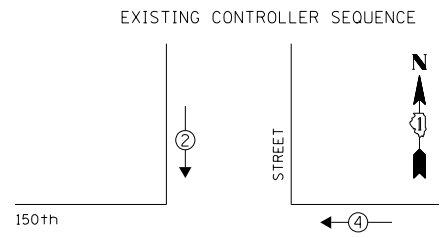


BY: \_\_\_\_\_ DATE: \_\_\_\_\_  
 SURVEYED \_\_\_\_\_ CHECKED \_\_\_\_\_  
 ALIGNMENT \_\_\_\_\_  
 RT. OF WAY CHECKED \_\_\_\_\_  
 CADD FILE NAME \_\_\_\_\_

PLAN NO. \_\_\_\_\_  
 NOTE BOOK NO. \_\_\_\_\_

ENGINEERING LTD.  
**CHRISTOPHER B. BURKE**  
 8575 West Higgins Road, Suite 600  
 Rosemont, Illinois 60018  
 (647) 923-5500

DATE: \_\_\_\_\_ BY: \_\_\_\_\_  
 SURVEYED \_\_\_\_\_ CHECKED \_\_\_\_\_  
 GRADES \_\_\_\_\_  
 ELEM. NOTED \_\_\_\_\_  
 STRUCTURE NOTATIONS OKWD



EXISTING EMERGENCY VEHICLE PREEMPTORS

EMERGENCY VEHICLE PREEMPTOR	3	4
MOVEMENT	↓ ↑	← →

**REMOVAL OF EXISTING TRAFFIC SIGNAL EQUIPMENT**

THE FOLLOWING ITEMS SHALL BE REMOVED BY THE CONTRACTOR AND SHALL BE DISPOSED OF BY THEM OUTSIDE THE RIGHT-OF-WAY AT THEIR EXPENSE. THE SALVAGE VALUE OF THE REMOVED EQUIPMENT SHALL BE REFLECTED IN THE CONTRACT BID PRICE.

4	EACH	SIGNAL HEAD, 2-FACE, 3-SECTION
4	EACH	SIGNAL HEAD, 1-FACE, 3-SECTION
3	EACH	STEEL POST

LEGEND

⊛ DUAL ENTRY PHASE

\* NUMBER REFERS TO ASSOCIATED PHASE

**NOTES**

- 1) ALL COSTS RELATED TO ATTACHING THE POSTS TO THE EXISTING FOUNDATION SHALL BE INCLUDED IN THE UNIT COST OF TRAFFIC SIGNAL POST OF THE SIZE SPECIFIED
- 2) PRIOR TO REMOVING ANY TRAFFIC SIGNAL POST SPECIFIED TO BE REPLACED IN THE SAME LOCATION, THE CONTRACTOR SHALL VERIFY THAT THE PATTERN, SPACING, AND CONDITION OF THE EXISTING BOLTS ARE SUITABLE FOR RE-USE WITH A NEW POST. IF THE BOLTS ARE NOT REUSABLE, REPLACE AS DIRECTED BY THE ENGINEER.
- 3) THE CONTRACTOR SHALL RELOCATE EXISTING SIGN PANELS FROM POSTS THAT ARE INDICATED FOR REPLACEMENT TO THE NEW POSTS AS SHOWN ON THE PLANS OR AS DIRECTED BY THE ENGINEER. THE COST OF REMOVAL, RELOCATION AND ANY NEW MOUNTING HARDWARE NECESSARY TO COMPLETE THIS WORK SHALL BE INCLUDED IN THE UNIT COST OF TRAFFIC SIGNAL POST OF THE SIZE SPECIFIED.

I.D.O.T. TRAFFIC SIGNAL INSTALLATION ELECTRICAL SERVICE REQUIREMENTS

TYPE	NO. OF LAMPS	WATTAGE X INCAND. LED	% OPERATION	TOTAL WATTAGE
SIGNAL (RED)	12	17	0.50	102.00
(YELLOW)	12	25	0.25	75.00
(GREEN)	12	15	0.25	45.00
ARROW	-	12	0.10	-
PED. SIGNAL	-	25	1.00	-
CONTROLLER	1	100	1.00	100.00
ILLUMINATED SIGN	-	25	0.05	-
VIDEO SYSTEM	-	150	1.00	-
LUMINAIRE	-	250	0.50	-
BATTERY BACKUP	1	25	1.00	25.0
FLASHER	-	-	0.50	-
ENERGY COSTS TO:				TOTAL = 347.00

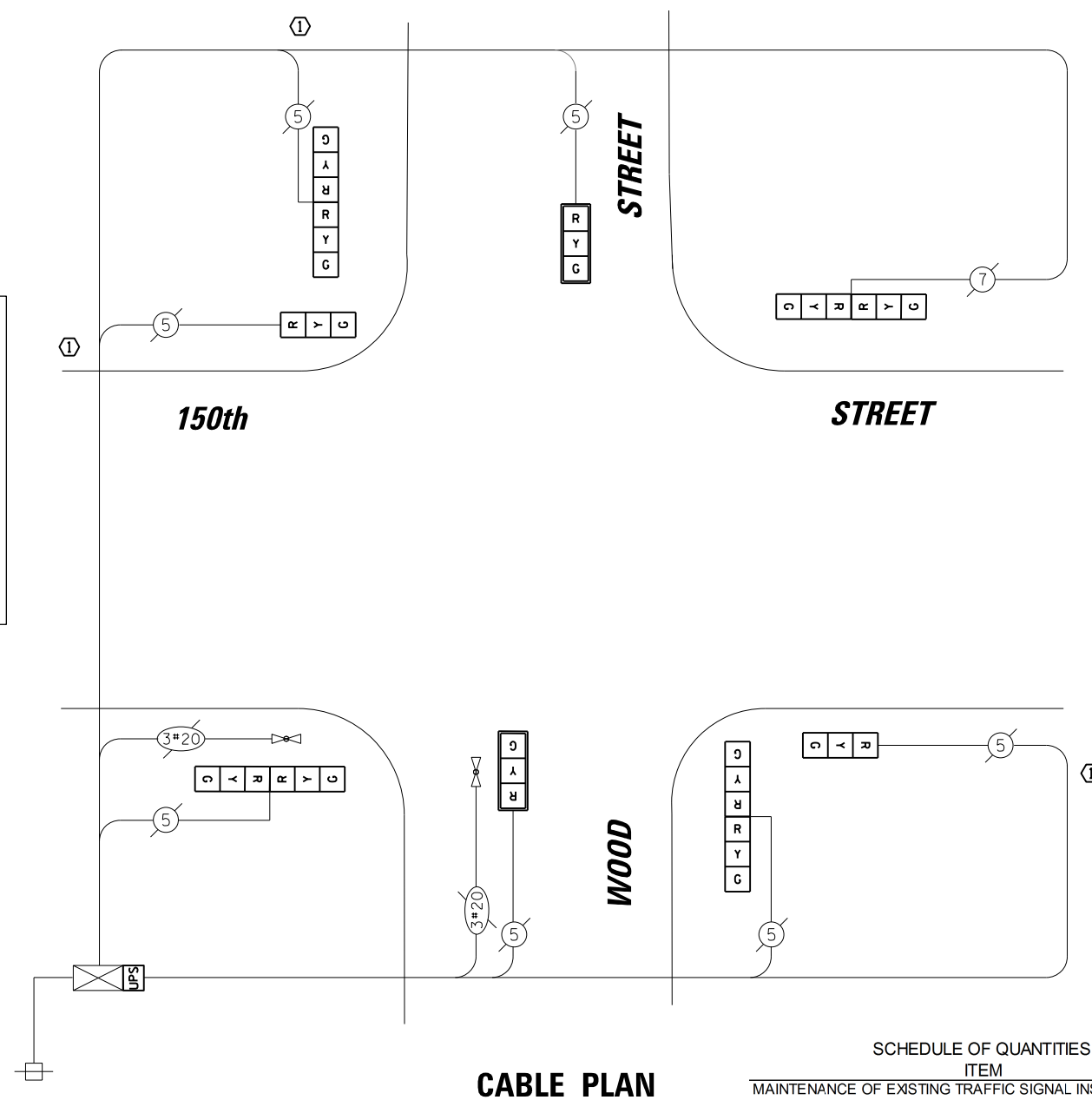
**CITY OF HARVEY**

15320 BROADWAY AVENUE  
 HARVEY, IL 60426

ENERGY SUPPLY: CONTACT: **BRAD SHINABARGAR**  
 PHONE: (708)-235-2692  
 COMPANY: **COMED**

**CONSTRUCTION NOTE:**

① THE CONTRACTOR SHALL REPLACE THE EXISTING TRAFFIC SIGNAL POST WITH THE PROPOSED TRAFFIC SIGNAL POST, 14 FT. AND ATTACH THE PROPOSED POST TO THE EXISTING FOUNDATION.



**SCHEDULE OF QUANTITIES**

ITEM	UNIT	QUANTITY
MAINTENANCE OF EXISTING TRAFFIC SIGNAL INSTALLATION	EACH	1
TRAFFIC SIGNAL POST, GALVANIZED STEEL 14 FT.	EACH	3
SIGNAL HEAD, LED, 1-FACE, 3-SECTION, MAST-ARM MOUNTED	EACH	2
SIGNAL HEAD, LED, 1-FACE, 3-SECTION, BRACKET MOUNTED	EACH	2
SIGNAL HEAD, LED, 2-FACE, 3-SECTION, BRACKET MOUNTED	EACH	4
TRAFFIC SIGNAL BACKPLATE, LOUVERED, ALUMINUM	EACH	2
MODIFY EXISTING CONTROLLER SIGNAL CABINET	EACH	1
REMOVE EXISTING TRAFFIC SIGNAL EQUIPMENT	EACH	1
UNINTERRUPTIBLE POWER SUPPLY, SPECIAL	EACH	1

FILE NAME = N:\dot\130116\Work Order 13019 - South Cook County LED\Traffic\CAB_150th-Wood.L.sht	USER NAME = fpaceone	DESIGNED - EAJ	REVISED -
		DRAWN - FPB / FCP	REVISED -
		CHECKED - GMZ	REVISED -
		DATE - SEPT. , 2013	REVISED -

**STATE OF ILLINOIS  
 DEPARTMENT OF TRANSPORTATION**

**SCHEDULE OF QUANTITIES, CABLE PLAN, PHASE DESIGNATION  
 DIAGRAM AND EMERGENCY VEHICLE PREEMPTION SEQUENCE  
 150TH STREET AT WOOD STREET**

SCALE: \_\_\_\_\_ SHEET NO. \_\_\_\_\_ OF \_\_\_\_\_ SHEETS STA. \_\_\_\_\_ TO STA. \_\_\_\_\_

F.A.P. RTE.	SECTION	COUNTY	TOTAL SHEETS	SHEET NO.
	VARIOUS	COOK	87	54
CONTRACT NO. 60X24			ILLINOIS FED. AID PROJECT	

TS # 13795  
 HARVEY