

STATE OF ILLINOIS
 DEPARTMENT OF TRANSPORTATION
 DIVISION OF HIGHWAYS

**PROPOSED
 HIGHWAY PLANS**

VARIOUS ROUTES
 SECTION 2013-057SG
 VARIOUS - SOUTH (WRONG WAY DRIVING)
 SIGNING
 PROJECT: ACHSIP-000S(954)
 COOK, DUPAGE, AND KANE COUNTIES
 C-91-059-14

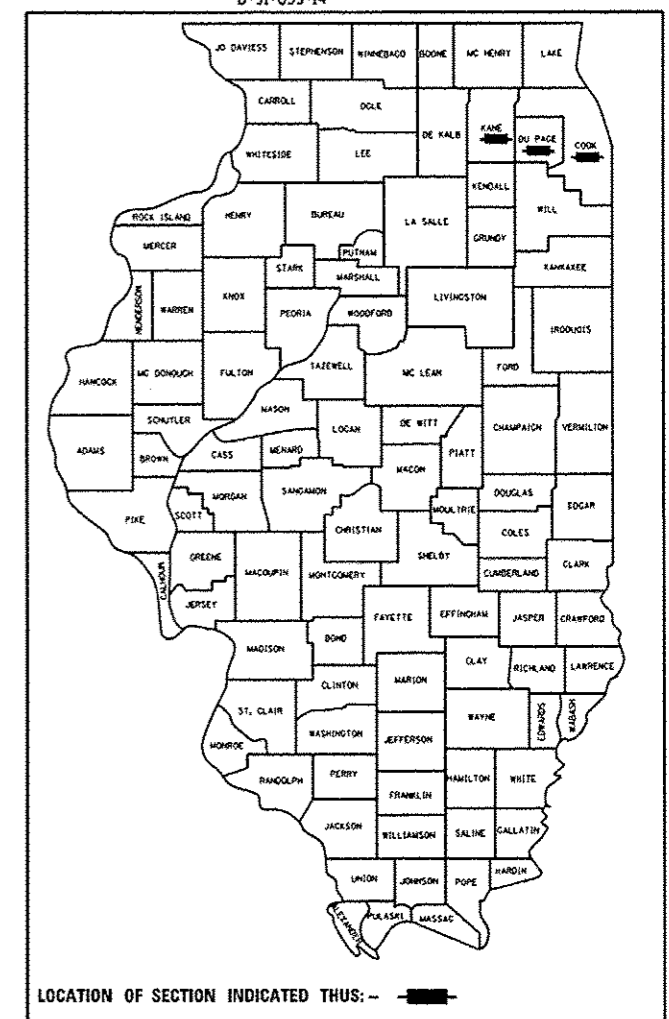
FOR INDEX OF SHEETS, SEE SHEET NO. 2

THIS PROJECT IS LOCATED IN THE MUNICIPALITIES OF BARTLETT, BEDFORD PARK, CALUMET CITY, DOWNERS GROVE, ELGIN, ELMHURST, HANOVER PARK, Lisle, LOMBARD, LYONS, MCCOOK, MELROSE PARK, NORTHLAKE, OAK BROOK, PALOS PARK, SCHAUMBURG, STONE PARK, STREAMWOOD, SUGAR GROVE, SUMMIT, AND UNINCORPORATED AREAS

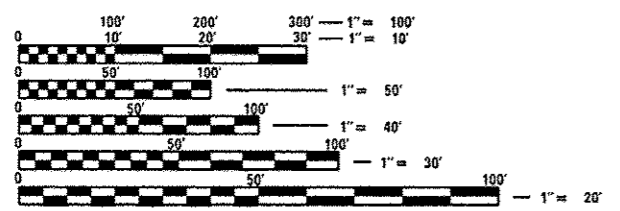
F.A. RTE.	SECTION	COUNTY	TOTAL SHEETS	SHEET NO.
	2013-057SG	VARIOUS*	50	1
		ILLINOIS	CONTRACT NO. 60X31	

*COOK, DUPAGE, AND KANE

D-91-059-14



FOR LOCATION MAPS, SEE SHEETS 4 - 6



FULL SIZE PLANS HAVE BEEN PREPARED USING STANDARD ENGINEERING SCALES. REDUCED SIZED PLANS WILL NOT CONFORM TO STANDARD SCALES. IN MAKING MEASUREMENTS ON REDUCED PLANS, THE ABOVE SCALES MAY BE USED.

J.U.L.I.E.
 JOINT UTILITY LOCATION INFORMATION FOR EXCAVATION
 1-800-892-0123
 OR 811

PROJECT ENGINEER: DAN WILGREEN (847) 705-4240
 PROJECT MANAGER: KEN ENG (847) 705-4247

CONTRACT NO. 60X31

STATE OF ILLINOIS
 DEPARTMENT OF TRANSPORTATION
 DIVISION OF HIGHWAYS

SUBMITTED October 16, 2013
John P. ...
 DEPUTY DIRECTOR OF HIGHWAYS, REGION ENGINEER

Dec 6, 2013
John D. Baranzelli P.E.
 acting ENGINEER OF DESIGN AND ENVIRONMENT

Dec 6, 2013
Omer Osman P.E.
 DIRECTOR OF HIGHWAYS, CHIEF ENGINEER

PRINTED BY THE AUTHORITY
 OF THE STATE OF ILLINOIS