

1-17-14 LETTING ITEM 026

STATE OF ILLINOIS
DEPARTMENT OF TRANSPORTATION
DIVISION OF HIGHWAYS
**PLANS FOR PROPOSED
FEDERAL AID PROJECT**
FAU ROUTE 2505 (RANDALL ROAD)
OAK STREET TO ORCHARD ROAD
RESURFACING
SECTION 13-00054-00-RS
PROJECT M-4003(161)
NORTH AURORA
KANE COUNTY
C-91-213-13

F.A.D. RTE.	SECTION	COUNTY	TOTAL SHEETS	SHEET NO.
2505	13-00054-00-RS	KANE	16	1
FED. ROAD DIST. NO. 1	ILLINOIS	CONTRACT NO. 63879		

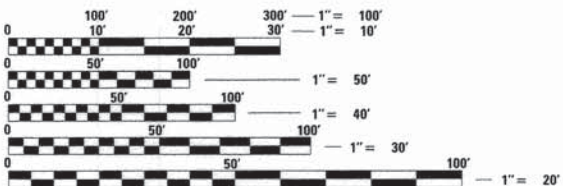
INDEX OF SHEETS

NO.	DESCRIPTION
1	COVER SHEET
2	APPLICABLE HIGHWAY STANDARDS, GENERAL NOTES AND SUMMARY OF QUANTITIES
3	TYPICAL SECTIONS
4	SCHEDULE OF QUANTITIES
5-7	RANDALL ROAD RESURFACING PLANS
8-10	RANDALL ROAD STRIPING PLANS
11-16	DISTRICT ONE DETAILS

TRAFFIC DATA

ADT (2006) = 16,700
POSTED SPEED LIMIT = 50 MPH
DESIGN SPEED = 55 MPH
CLASSIFICATION = MINOR ARTERIAL

REMPE-SHARPE
CONSULTING ENGINEERS
IL P.D.F. LICENSE NO. 184-000895
324 WEST STATE STREET - GENEVA, ILLINOIS 60134
Telephone (630) 232-0827 - Fax (630) 232-1629

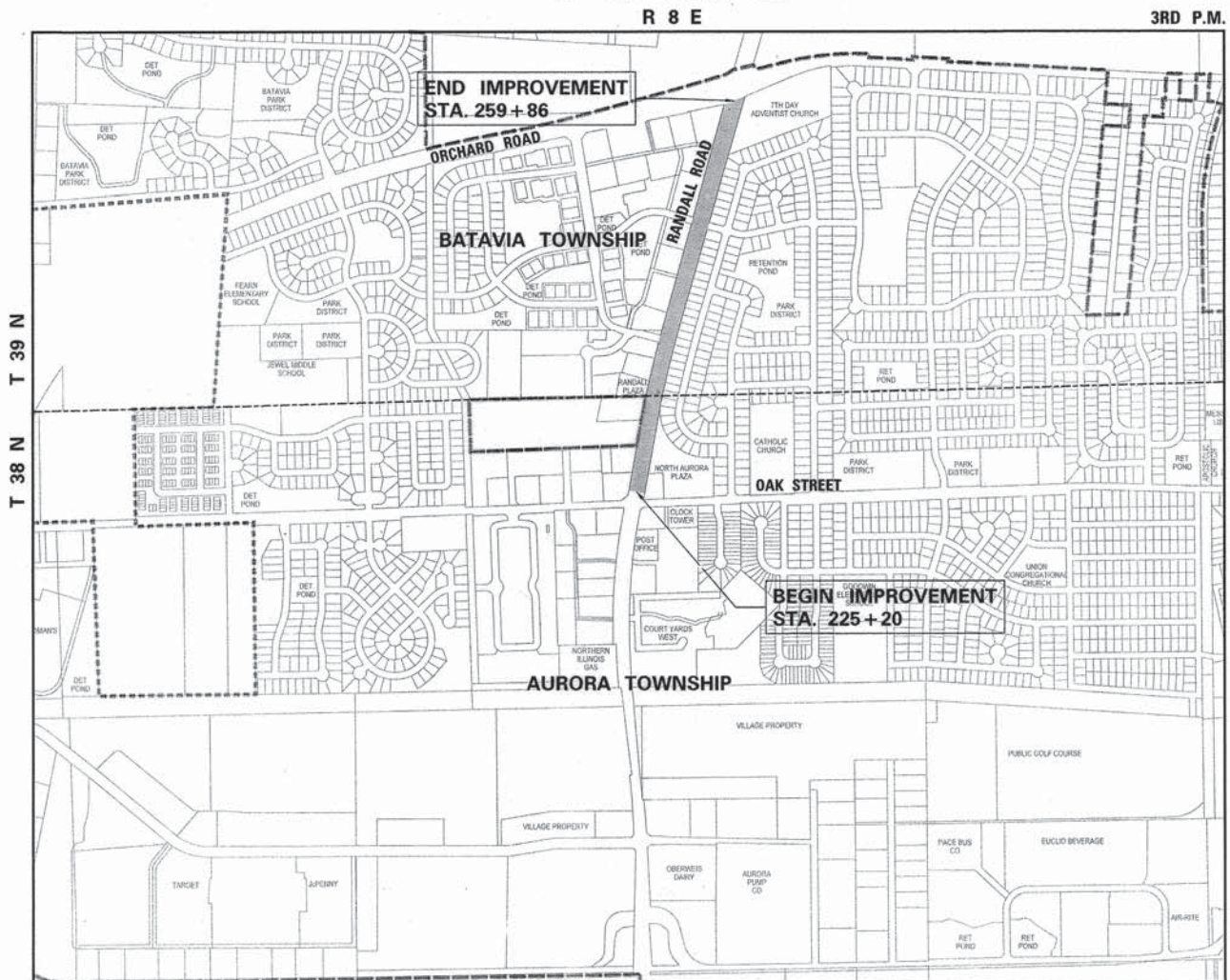


FULL SIZE PLANS HAVE BEEN PREPARED USING STANDARD ENGINEERING SCALES. REDUCED SIZED PLANS WILL NOT CONFORM TO STANDARD SCALES. IN MAKING MEASUREMENTS ON REDUCED PLANS, THE ABOVE SCALES MAY BE USED.

J.U.L.I.E.
JOINT UTILITY LOCATION INFORMATION FOR EXCAVATION
1-800-892-0123
OR 811

PROJECT ENGINEER - DOUGLAS W. RANNEY II, P.E.
PROJECT MANAGER - JAMES J. BIBBY, P.E.

CONTRACT NO. 63879



LOCATION MAP
NO SCALE

GROSS LENGTH OF IMPROVEMENT: 3,466 LF = 0.66 MILES
NET LENGTH OF IMPROVEMENT: 3,466 LF = 0.66 MILES



STATE OF ILLINOIS
DEPARTMENT OF TRANSPORTATION
DIVISION OF HIGHWAYS

APPROVED 10-18 2013
Dale Berner
VILLAGE OF NORTH AURORA

PASSED OCTOBER 29 2013
C. J. Hart
DISTRICT ONE ENGINEER OF LOCAL ROADS AND STREETS

RELEASING FOR BID BASED ON LIMITED REVIEW October 29 2013
John Peterson
DEPUTY DIRECTOR OF HIGHWAYS, REGION ONE ENGINEER

Douglas W. Ranney
DOUGLAS W. RANNEY
ILLINOIS REGISTERED PROFESSIONAL ENGINEER
NO. 062-061276 EXPIRES 11-30-15

**PRINTED BY THE AUTHORITY
OF THE STATE OF ILLINOIS**

PROGRAM AND OFFICE ENGINEER: CHARLES F. RIDDLE, P.E. 847-705-4406 SCHAUMBURG, IL

APPLICABLE IDOT HIGHWAY STANDARDS

IDOT NO.	STANDARD DRAWINGS
000001-06	STANDARD SYMBOLS, ABBREVIATIONS AND PATTERNS
701426-06	LANE CLOSURE, MULTILANE, INTERMITTENT OR MOVING OPER., FOR SPEEDS > 45 MPH
701606-09	URBAN LANE CLOSURE, MULTILANE, 2W WITH MOUNTABLE MEDIAN
701701-09	URBAN LANE CLOSURE, MULTILANE INTERSECTION
701901-03	TRAFFIC CONTROL DEVICES
780001-04	TYPICAL PAVEMENT MARKINGS

SUMMARY OF QUANTITIES

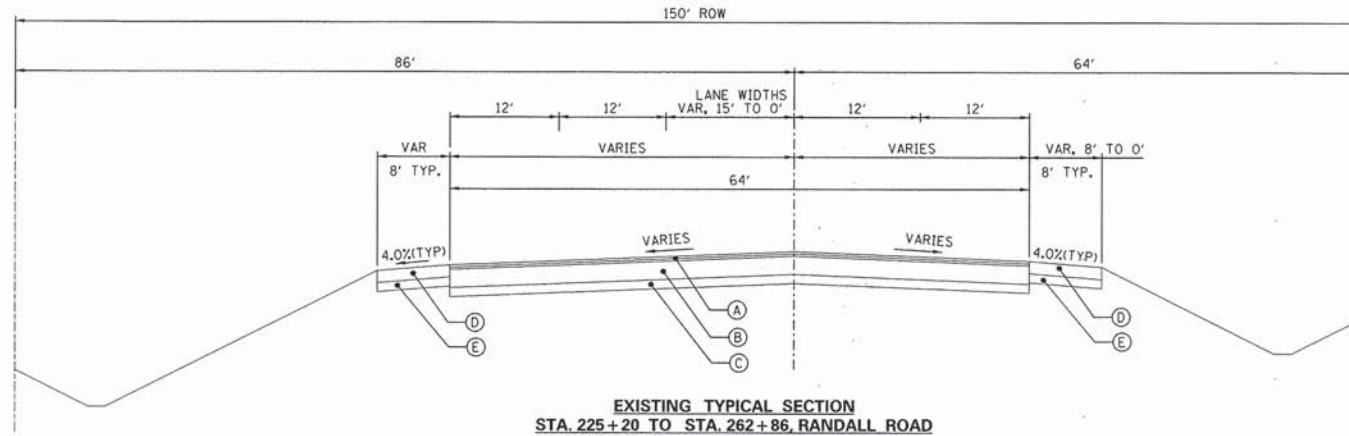
CODE NO.	ITEM	UNITS	TOTAL QUANTITY	CONSTRUCTION TYPE CODE
				0005
40600100	BITUMINOUS MATERIALS (PRIME COAT)	GALLON	3610	3610
40600400	MIXTURE FOR CRACKS, JOINTS, AND FLANGEWAYS	TON	100	100
40600895	CONSTRUCTING TEST STRIP	EACH	1	1
40600982	HOT-MIX ASPHALT SURFACE REMOVAL - BUTT-JOINT	SQ YD	606	606
40603085	HOT-MIX ASPHALT BINDER COURSE, IL-19.0, N70	TON	5026	5026
40603340	HOT-MIX ASPHALT SURFACE COURSE, MIX "D", N70	TON	3016	3016
40800030	AGGREGATE (PRIME COAT)	TON	100	100
44000165	HOT-MIX ASPHALT SURFACE REMOVAL, 4"	SQ YD	35900	35900
44201765	CLASS D PATCHES, TYPE II, 10 INCH	SQ YD	44	44
44201769	CLASS D PATCHES, TYPE III, 10 INCH	SQ YD	17	17
44201771	CLASS D PATCHES, TYPE IV, 10 INCH	SQ YD	377	377
67100100	MOBILIZATION	L SUM	1	1
70102625	TRAFFIC CONTROL AND PROTECTION, STANDARD 701606	L SUM	1	1
70102635	TRAFFIC CONTROL AND PROTECTION, STANDARD 701701	L SUM	1	1
70106800	CHANGEABLE MESSAGE SIGN	CAL MO	6	6
70300100	SHORT TERM PAVEMENT MARKING	FOOT	5500	5500
78301000	PAVEMENT MARKING REMOVAL	SQ FT	1315	1315
Δ 78000100	THERMOPLASTIC PAVEMENT MARKING - LETTERS AND SYMBOLS	SQ FT	328	328
Δ 78000200	THERMOPLASTIC PAVEMENT MARKING-LINE 4"	FOOT	21918	21918
Δ 78000400	THERMOPLASTIC PAVEMENT MARKING-LINE 6"	FOOT	1605	1605
Δ 78000600	THERMOPLASTIC PAVEMENT MARKING-LINE 12"	FOOT	257	257
Δ 78000650	THERMOPLASTIC PAVEMENT MARKING-LINE 24"	FOOT	190	190
78300200	RAISED REFLECTIVE PAVEMENT MARKER REMOVAL	EACH	200	200
X6030310	FRAMES AND LIDS TO BE ADJUSTED (SPECIAL)	EACH	2	2
Z0030850	TEMPORARY INFORMATION SIGNING	SQ FT	51.4	51.4

Δ SPECIALTY ITEMS

GENERAL NOTES

- SPECIFICATIONS, STANDARDS AND SPECIAL PROVISIONS:**
ALL CONSTRUCTION SHALL BE PERFORMED IN ACCORDANCE WITH THE ILLINOIS DEPARTMENT OF TRANSPORTATION "STANDARD SPECIFICATIONS FOR ROAD AND BRIDGE CONSTRUCTION", ADOPTED JAN. 1, 2012 (HEREINAFTER REFERRED TO AS THE STANDARD SPECIFICATIONS); THE "SUPPLEMENTAL SPECIFICATIONS AND RECURRING SPECIAL PROVISIONS", ADOPTED JANUARY 1, 2014; THE LATEST EDITION OF THE "ILLINOIS MANUAL ON UNIFORM TRAFFIC CONTROL DEVICES FOR STREETS AND HIGHWAYS"; THE "DETAILS" ON THE PLANS AND THE "SPECIAL PROVISIONS" INCLUDED IN THE CONTRACT DOCUMENTS.
ANY REFERENCE TO STANDARDS THROUGHOUT THE PLANS OR SPECIAL PROVISIONS SHALL BE INTERPRETED AS THE LATEST STANDARD OF THE DEPARTMENT.
- PROTECTION OF PUBLIC/PRIVATE PROPERTY:**
THE CONTRACTOR SHALL PROTECT ALL EXISTING TREES TO REMAIN, SHRUBS, FENCES, DRAIN LINES, POWER LINES, AND OTHER PUBLIC/PRIVATE PROPERTY. ANY ITEM THAT IS DAMAGED SHALL BE REPLACED OR REPAIRED BY THE CONTRACTOR AS DIRECTED BY THE ENGINEER AT NO COST.
- EXISTING STREET CLEANLINESS:**
THE CONTRACTOR SHALL KEEP EXISTING AND ADJACENT STREETS CLEAN OF DIRT, MUD, AND OTHER DEBRIS AND, WHEN NECESSARY, CLEAN SAID PAVEMENTS ON A DAILY BASIS.
- REMOVAL, MAINTENANCE AND RESETTING EXISTING MAILBOXES, STREET SIGNS AND STOP SIGNS:**
EXISTING MAILBOXES, STREET SIGNS, AND STOP SIGNS WHICH INTERFERE WITH CONSTRUCTION SHALL BE REMOVED AND TEMPORARILY RELOCATED DURING CONSTRUCTION BY THE CONTRACTOR. AFTER THE WORK HAS BEEN SUBSTANTIALLY COMPLETED, SAID MAILBOXES AND SIGNS SHALL BE RESET AT A LOCATION SPECIFIED BY THE ENGINEER. THE COST OF THIS WORK SHALL BE CONSIDERED AS INCLUDED IN THE COST OF THE CONTRACT WITH NO ADDITIONAL COMPENSATION ALLOWED. ANY SIGN DAMAGED OR LOST SHALL BE REPLACED AT THE CONTRACTOR'S EXPENSE. TEMPORARY STOP SIGNS SHALL BE PLACED AS REQUIRED BY THE ENGINEER AS PART OF THE TRAFFIC CONTROL AND PROTECTION PAY ITEM.
- CONSTRUCTION LIMITS:**
THE CONTRACTOR SHALL CONFINE HIS OPERATIONS WITHIN THE DEDICATED ROADWAY RIGHT-OF-WAY OR EASEMENTS OBTAINED BY THE VILLAGE OF NORTH AURORA. ANY DAMAGE OUTSIDE OF SAID RIGHT-OF-WAY OR EASEMENTS SHALL BE REPAIRED AT THE CONTRACTOR'S EXPENSE.
- BARRICADES:**
THE CONTRACTOR SHALL PROVIDE AND INSTALL TWO (2) WEIGHTED SANDBAGS ON EACH TYPE I OR TYPE II BARRICADE USED. ONE (1) WEIGHTED SANDBAG ACROSS EACH RAIL.
- SOIL REPORT:**
GEOTECHNICAL SOILS REPORTS AND OTHER ADVANCED PLANNING DOCUMENTS WERE PREPARED FOR THIS PROJECT AND ARE AVAILABLE FOR BIDDERS' REVIEW BY CONTACTING THE LEAD LOCAL AGENCY AT TELEPHONE NUMBER (630) 897-8228.

FILE NAME = #FILE#	USER NAME = #USER#	DESIGNED -	REVISED -	STATE OF ILLINOIS DEPARTMENT OF TRANSPORTATION	APPLICABLE HIGHWAY STANDARDS, GENERAL NOTES AND SUMMARY OF QUANTITIES				F.A.U. RTE.	SECTION	COUNTY	TOTAL SHEETS	SHEET NO.	
		CHECKED -	REVISED -		SCALE:	NONE	SHEET NO. 2 OF 16 SHEETS	STA.	TO STA.	2505	13-00054-00-RS	KANE	16	2
		DRAWN -	REVISED -		CONTRACT NO. 63879									
		CHECKED -	REVISED -		FED. ROAD DIST. NO. ILLINOIS FED. AID PROJECT									



EXISTING TYPICAL SECTION
STA. 225+20 TO STA. 262+86, RANDALL ROAD

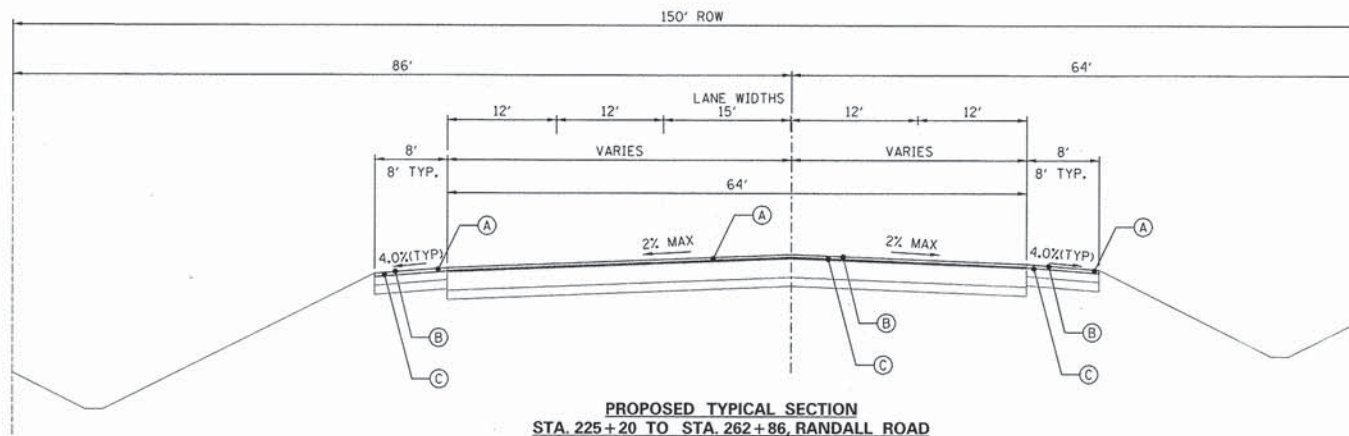
HOT MIX ASPHALT MIXTURE REQUIREMENT

ITEM	AIR VOIDS @ Ndes
PAVEMENT RESURFACING	
HOT-MIX ASPHALT SURFACE COURSE, MIX D, N70 (IL 9.5 mm), 1 1/2"	4% @ 70 GYR
HOT-MIX ASPHALT BINDER COURSE, IL 19.0, N70, 2 1/2"	4% @ 70 GYR
PATCHING	
CLASS D PATCHES (HMA BINDER IL-19.0, N70)	4% @ 70 GYR

LEGEND

- (A) EXISTING HMA COURSE - 4"
- (B) EXISTING HMA BASE COURSE - 10"
- (C) EXISTING AGGREGATE BASE - 8"
- (D) EXISTING HMA SHOULDER - 8"
- (E) EXISTING AGGREGATE BASE - 6"

NOTE:
THE UNIT WEIGHT USED TO CALCULATE ALL HMA SURFACE MIXTURE QUANTITIES IS 112#/SY-IN.
THE "AC TYPE" FOR POLYMERIZED HMA MIXES SHALL BE "SBS/SBR PG 76-22" AND FOR NON-POLYMERIZED HMA THE "AC TYPE" SHALL BE "PG 64-22" UNLESS MODIFIED BY DISTRICT ONE SPECIAL PROVISIONS.
FOR "PERCENT OF RAP" SEE SPECIAL PROVISIONS.



PROPOSED TYPICAL SECTION
STA. 225+20 TO STA. 262+86, RANDALL ROAD

LEGEND

- (A) HMA SURFACE REMOVAL, 4"
- (B) HMA SURFACE COURSE, 1 1/2"
- (C) HMA BINDER COURSE, 2 1/2"

FILE NAME = #FILE#	USER NAME = #USER#	DESIGNED -	REVISED -
		CHECKED -	REVISED -
	PLOT SCALE = #SCALE#	DRAWN -	REVISED -
	PLOT DATE = #DATE#	CHECKED -	REVISED -

STATE OF ILLINOIS
DEPARTMENT OF TRANSPORTATION

RANDALL ROAD
TYPICAL SECTIONS

SCALE: NONE SHEET NO. 3 OF 16 SHEETS STA. TO STA.

F.A.U. RTE. 2505	SECTION 13-00054-00-RS	COUNTY KANE	TOTAL SHEETS 16	SHEET NO. 3
FED. ROAD DIST. NO. ILLINOIS FED. AID PROJECT CONTRACT NO. 63879				

HOT-MIX ASPHALT SURFACE REMOVAL-BUTT JOINT		
LOCATION	OFFSET	AREA (SY)
STA 225+20	0	178
STA 229+40	86' LT	42
STA 239+50	86' LT	36
STA 245+60	86' LT	36
STA 250+93	86' LT	50
STA 250+93	64' RT	53
STA 258+00	86' LT	33
STA 262+86	0	178
TOTAL		606

THERMOPLASTIC PAVEMENT MARKING 4" SOLID WHITE LINE	
LOCATION	QUANTITY (LF)
STA 225+20 TO STA 229+60, LT	440
STA 225+20 TO STA 250+42, RT	2522
STA 230+07 TO STA 239+07, LT	900
STA 239+95 TO STA 250+25, LT	1030
STA 251+50 TO STA 262+86, LT	1136
STA 251+56 TO STA 262+86, RT	1130
TOTAL	7158

THERMOPLASTIC PAVEMENT MARKING 6" SOLID WHITE LINE	
LOCATION	QUANTITY (LF)
STA 225+20 TO STA 226+55, LT	135
STA 229+60 TO STA 231+60, LT	200
STA 236+68 TO STA 238+93, RT	225
STA 239+40, LT	15
STA 239+95 TO STA 241+45, LT	150
STA 248+10 TO STA 250+40, RT	230
STA 251+5, RT	6
STA 251+50 TO STA 253+70, LT	220
STA 262+72 TO STA 262+86, RT	14
TOTAL	1195

FRAMES AND LIDS TO BE ADJUSTED (SPECIAL)		
LOCATION	OFFSET	QUANTITY (EACH)
STA 239+10	60' LT	1
STA 239+75	60' LT	1
TOTAL		2

CLASS D PATCHES, 10"		
LOCATION	AREA (SY)	TYPE
STA 230+45, RT	28	IV
STA 235+10, RT	11	II
STA 235+45, RT	11	II
STA 236+00, RT	56	IV
STA 238+05, LT	8	II
STA 238+80, RT	17	III
STA 239+50, LT	56	IV
STA 240+30, LT	14	II
STA 241+00, RT	28	IV
STA 241+25, RT	28	IV
STA 241+80, LT	28	IV
STA 243+50, LT	28	IV
STA 249+55, LT	42	IV
STA 251+25, LT	83	IV
TOTAL	44	II
TOTAL	17	III
TOTAL	377	IV

THERMOPLASTIC PAVEMENT MARKING 6" WHITE SKIP-DASH (2' DASH, 6' SKIP)	
LOCATION	LENGTH (LF) SOLID LINE
STA 228+55 TO STA 228+70, LT	56
STA 231+60 TO STA 233+25, LT	46
STA 234+45 TO STA 237+70, RT	50
STA 241+45 TO STA 243+45, LT	50
STA 246+10 TO STA 248+10, RT	50
STA 251+00 TO STA 251+50	32
STA 253+70 TO STA 255+75, LT	52
STA 259+75 TO STA 261+86, RT	74
TOTAL	410

THERMOPLASTIC PAVEMENT MARKING 24" SOLID WHITE LINE		
LOCATION	OFFSET	LENGTH (LF)
STA 229+20	60' LT	13
STA 238+92	0' RT	42
STA 239+40	70' LT	28
STA 239+95	0' LT	38
STA 250+42	60' RT	29
STA 251+50	0' LT	40
TOTAL		190

THERMOPLASTIC PAVEMENT MARKING 4" WHITE SKIP-DASH (10' DASH, 30' SKIP)	
LOCATION	LENGTH (LF) SOLID LINE
STA 225+20 TO STA 250+50, LT	530
STA 225+20 TO STA 250+50, RT	530
STA 251+50 TO STA 262+86, LT	290
STA 251+50 TO STA 262+86, RT	290
TOTAL	1840

THERMOPLASTIC PAVEMENT MARKING 12" SOLID YELLOW DIAGONAL	
LOCATION	LENGTH (LF) 12" YELLOW LINE
STA 227+75	9
STA 229+25	19
STA 230+75	19
STA 232+25	19
STA 233+75	19
STA 235+25	12
STA 240+70	19
STA 242+20	19
STA 243+70	19
STA 245+20	19
STA 246+70	12
STA 255+70	19
STA 257+20	19
STA 258+70	19
STA 260+20	15
TOTAL	257

THERMOPLASTIC PAVEMENT MARKING 4" DOUBLE YELLOW	
LOCATION	LENGTH (LF) 4" SINGLE LINE
STA 225+20 TO STA 238+92, LT	2746
STA 225+20 TO STA 236+60, RT	2298
STA 239+90 TO STA 250+40, LT	2148
STA 240+00 TO STA 248+10, RT	1624
STA 251+50 TO STA 262+86, RT	2270
STA 253+70 TO STA 262+86, LT	1834
TOTAL	12920

THERMOPLASTIC PAVEMENT MARKING LETTERS AND SYMBOLS		
LOCATION	LETTERS SYMBOL	AREA (SF)
STA 228+10	LEFT ARROW	15.6
STA 226+25	ONLY	20.8
STA 231+20	RIGHT ARROW	15.6
STA 231+45	ONLY	20.8
STA 236+80	ONLY	20.8
STA 237+05	LEFT ARROW	15.6
STA 238+55	ONLY	20.8
STA 238+80	LEFT ARROW	15.6
STA 241+05	RIGHT ARROW	15.6
STA 241+30	ONLY	20.8
STA 248+25	ONLY	20.8
STA 248+50	LEFT ARROW	15.6
STA 250+05	ONLY	20.8
STA 250+30	LEFT ARROW	15.6
STA 251+65	LEFT ARROW	15.6
STA 251+90	ONLY	20.8
STA 253+30	LEFT ARROW	15.6
STA 253+55	ONLY	20.8
TOTAL		328

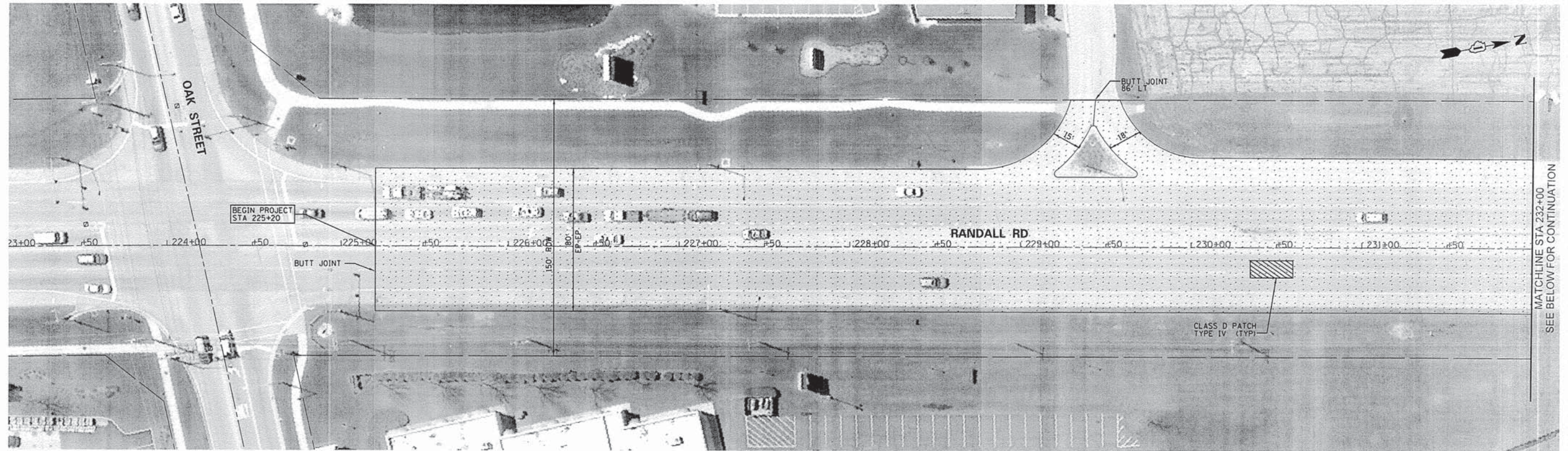
FILE NAME = #FILE#	USER NAME = #USER#	DESIGNED -	REVISOR -
		CHECKED -	REVISIONS -
		DRAWN -	REVISIONS -
		CHECKED -	REVISIONS -

**STATE OF ILLINOIS
DEPARTMENT OF TRANSPORTATION**

SCHEDULE OF QUANTITIES

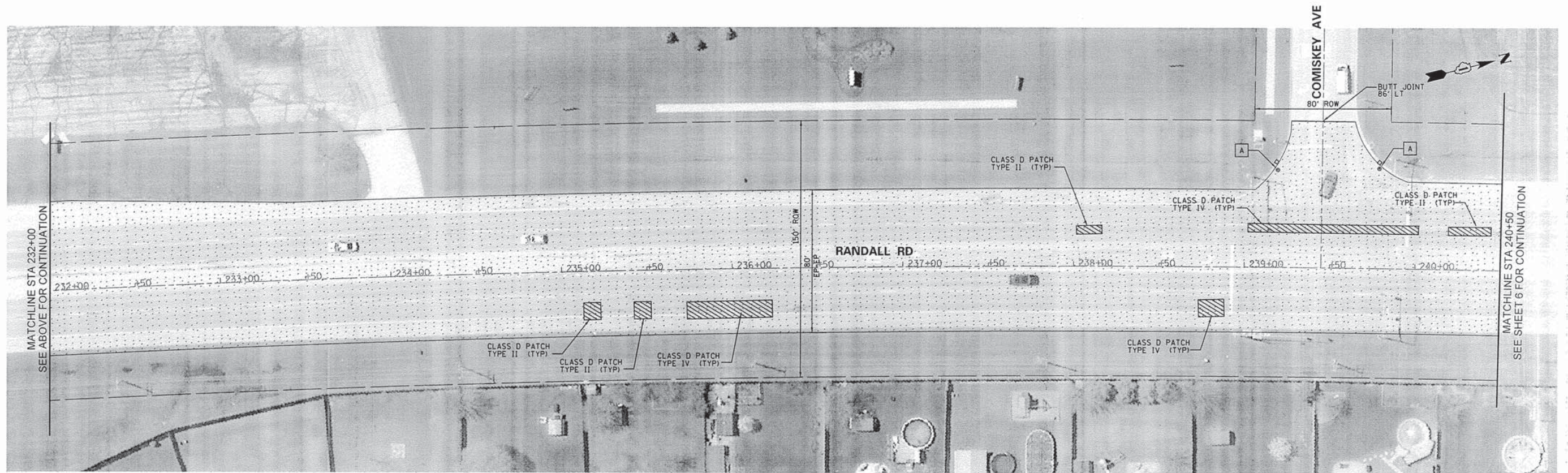
SCALE: NONE SHEET NO. 4 OF 16 SHEETS STA. TO STA.

F.A.U. RTE.	SECTION	COUNTY	TOTAL SHEETS	SHEET NO.
2505	13-00054-00-RS	KANE	16	4
FED. ROAD DIST. NO. ILLINOIS FED. AID PROJECT			CONTRACT NO. 63879	



MATCHLINE STA 232+00
SEE BELOW FOR CONTINUATION

LEGEND
 - 4" HMA SURFACE REMOVAL



MATCHLINE STA 232+00
SEE ABOVE FOR CONTINUATION

MATCHLINE STA 240+50
SEE SHEET 6 FOR CONTINUATION

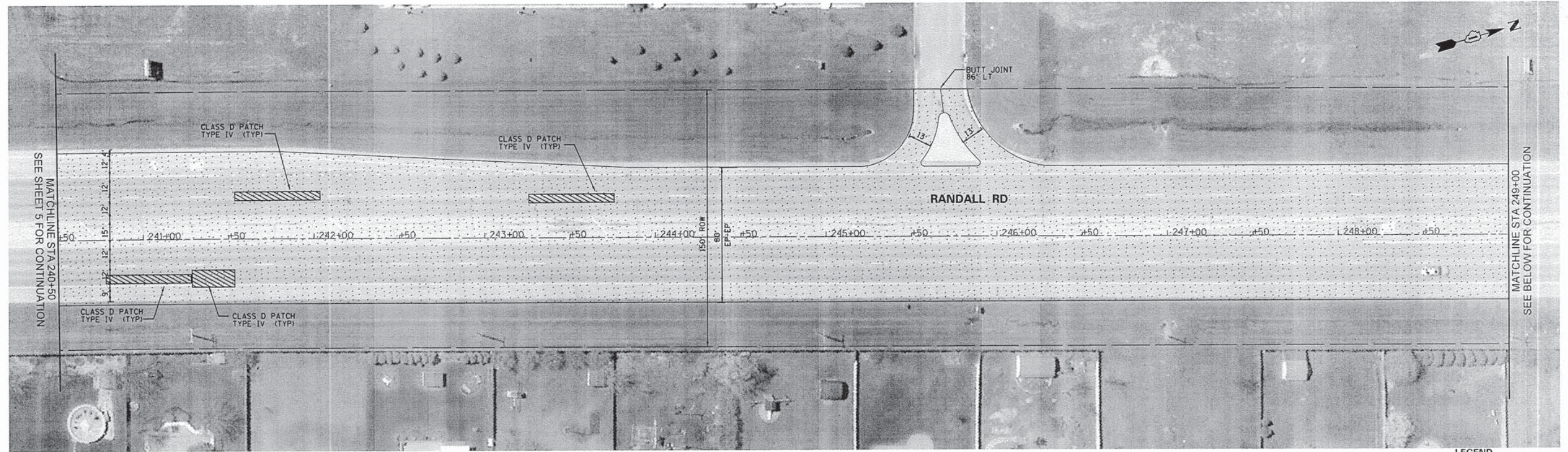
FILE NAME = #FILE#	USER NAME = #USER#	DESIGNED -	REVISED -
		CHECKED -	REVISED -
	PLOT SCALE = #SCALE#	DRAWN -	REVISED -
	PLOT DATE = #DATE#	CHECKED -	REVISED -

**STATE OF ILLINOIS
DEPARTMENT OF TRANSPORTATION**

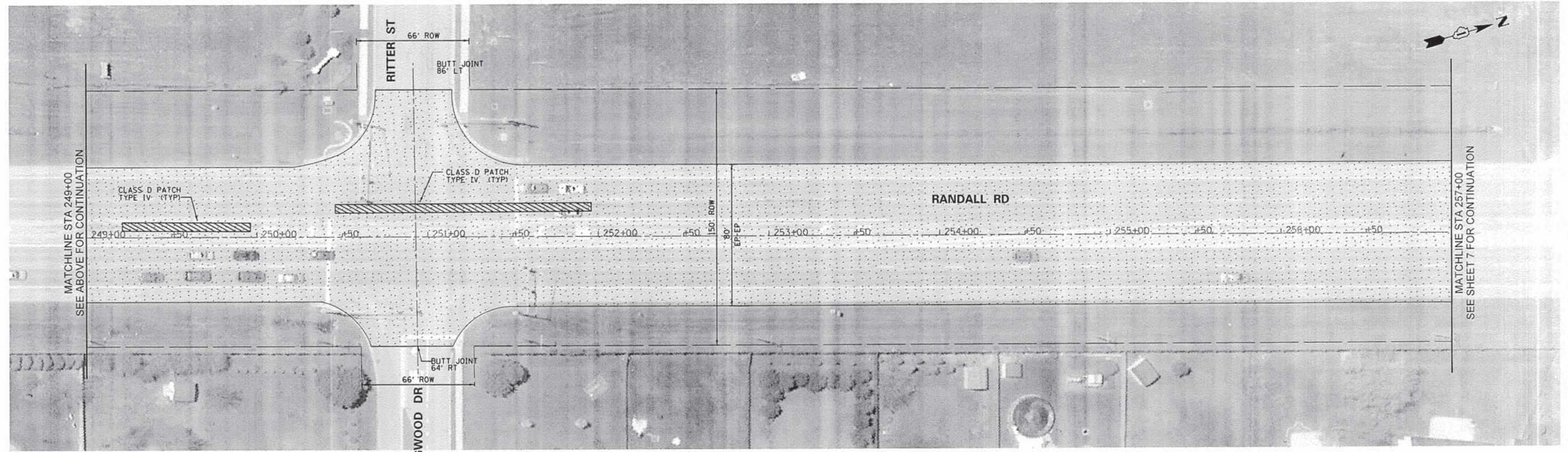
**RANDALL ROAD
RESURFACING PLAN**

SCALE: 1"=30' SHEET NO. 5 OF 16 SHEETS STA. 225+20 TO STA. 240+50

F.A.U. RTE. 2505	SECTION 13-00054-00-RS	COUNTY KANE	TOTAL SHEETS 16	SHEET NO. 5
FED. ROAD DIST. NO.		ILLINOIS FED. AID PROJECT		
CONTRACT NO. 63879				



LEGEND
 - 4" HMA SURFACE REMOVAL



FILE NAME =
#FILE#

USER NAME = #USER#
 PLOT SCALE = #SCALE#
 PLOT DATE = #DATE#

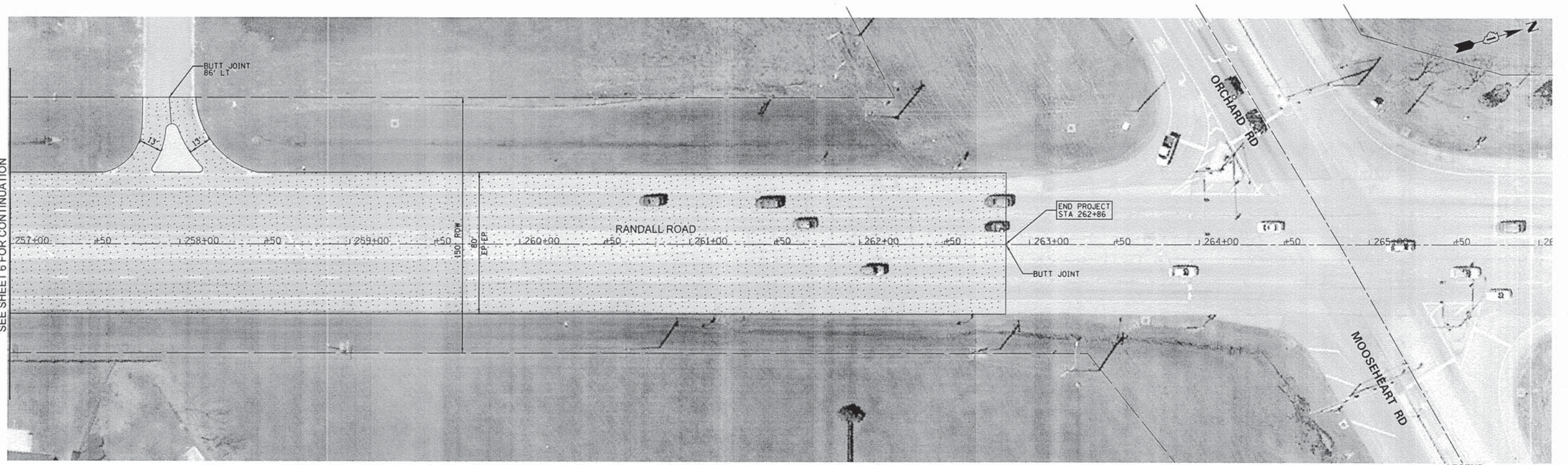
DESIGNED -	REVISD -
CHECKED -	REVISD -
DRAWN -	REVISD -
CHECKED -	REVISD -

**STATE OF ILLINOIS
 DEPARTMENT OF TRANSPORTATION**

**RANDALL ROAD
 RESURFACING PLAN**
 SCALE: 1"=30' SHEET NO. 6 OF 16 SHEETS STA. 240+50 TO STA. 257+00

F.A.U. RTE.	SECTION	COUNTY	TOTAL SHEETS	SHEET NO.
2505	13-00054-00-RS	KANE	16	6
FED. ROAD DIST. NO.		ILLINOIS FED. AID PROJECT		
		CONTRACT NO. 63879		

MATCHLINE STA 257+00
SEE SHEET 6 FOR CONTINUATION



LEGEND
 - 4" HMA SURFACE REMOVAL

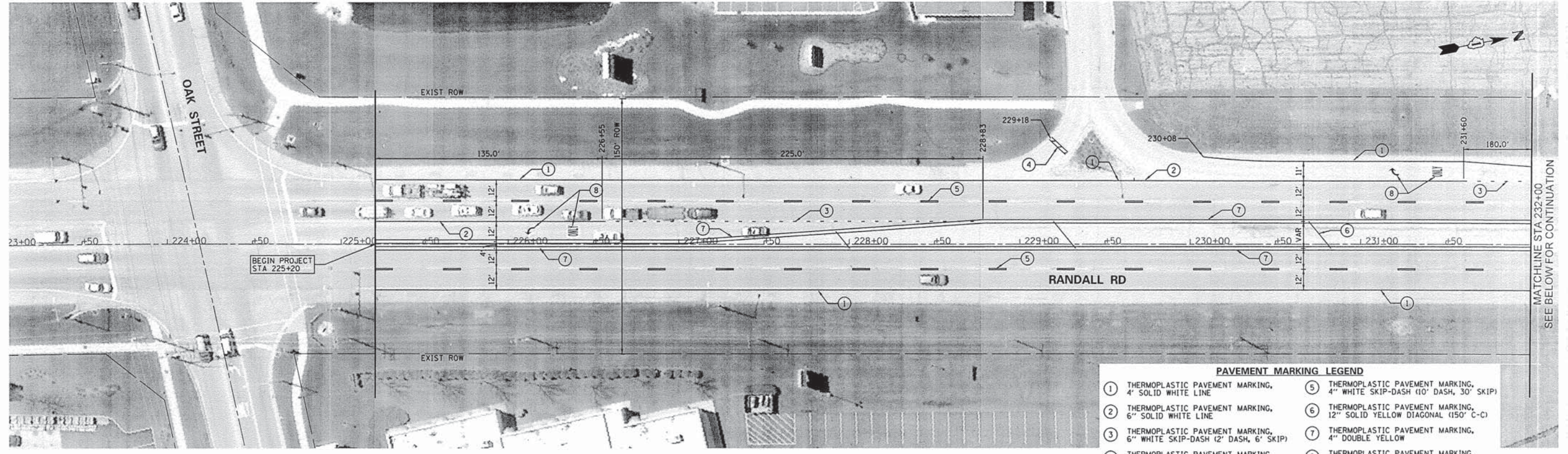
FILE NAME = #FILE#	USER NAME = #USER#	DESIGNED -	REVISED -
		CHECKED -	REVISED -
	PLOT SCALE = #SCALE#	DRAWN -	REVISED -
	PLOT DATE = #DATE#	CHECKED -	REVISED -

STATE OF ILLINOIS
DEPARTMENT OF TRANSPORTATION

RANDALL ROAD
RESURFACING PLAN

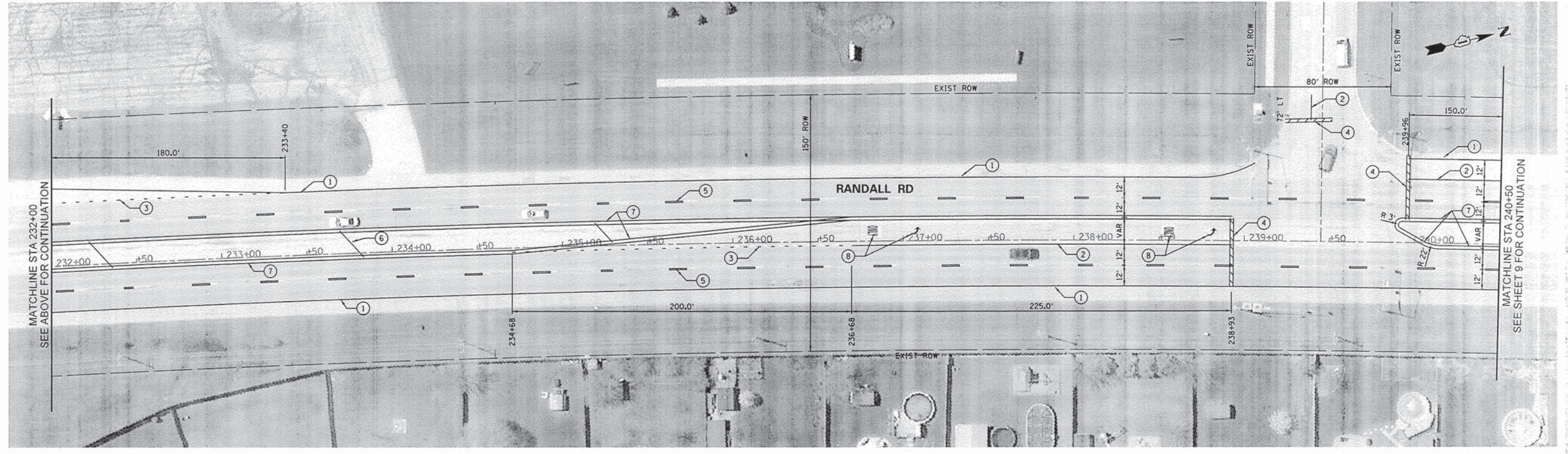
SCALE: 1"=30' SHEET NO. 7 OF 16 SHEETS STA. 257+00 TO STA. 262+86

F.A.U. RTE.	SECTION	COUNTY	TOTAL SHEETS	SHEET NO.
2505	13-00054-00-RS	KANE	16	7
FED. ROAD DIST. NO.			ILLINOIS FED. AID PROJECT	
			CONTRACT NO. 63879	

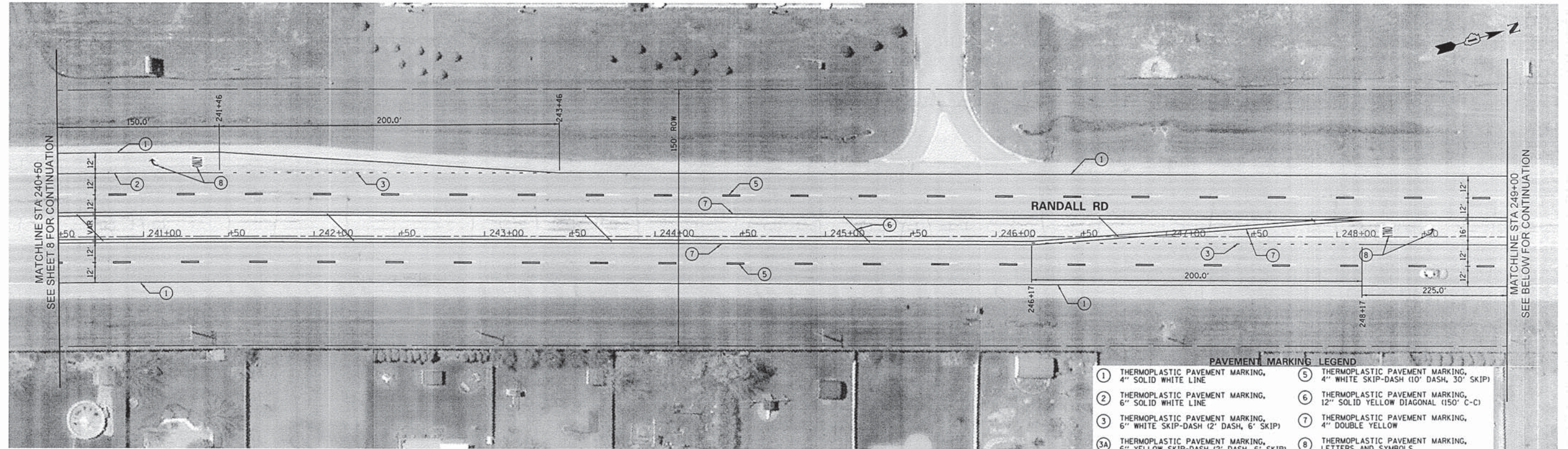


PAVEMENT MARKING LEGEND

① THERMOPLASTIC PAVEMENT MARKING, 4" SOLID WHITE LINE	⑤ THERMOPLASTIC PAVEMENT MARKING, 4" WHITE SKIP-DASH (10' DASH, 30' SKIP)
② THERMOPLASTIC PAVEMENT MARKING, 6" SOLID WHITE LINE	⑥ THERMOPLASTIC PAVEMENT MARKING, 12" SOLID YELLOW DIAGONAL (150' C-C)
③ THERMOPLASTIC PAVEMENT MARKING, 6" WHITE SKIP-DASH (2' DASH, 6' SKIP)	⑦ THERMOPLASTIC PAVEMENT MARKING, 4" DOUBLE YELLOW
④ THERMOPLASTIC PAVEMENT MARKING, 24" SOLID WHITE	⑧ THERMOPLASTIC PAVEMENT MARKING, LETTERS AND SYMBOLS

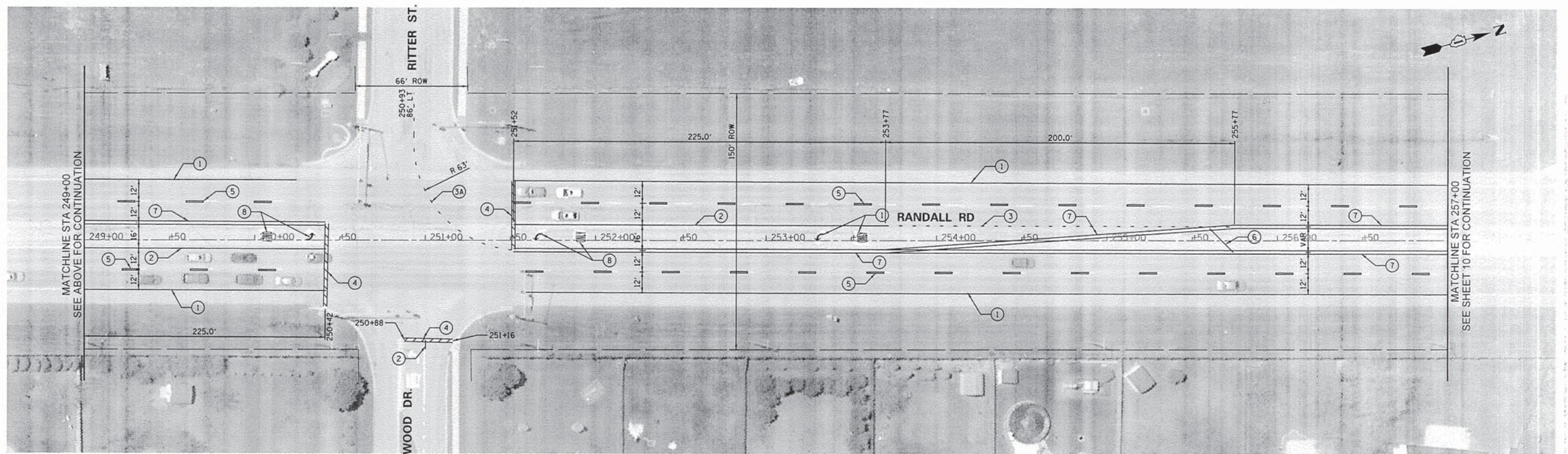


FILE NAME = #FILE#	USER NAME = #USER#	DESIGNED -	REVISED -	STATE OF ILLINOIS DEPARTMENT OF TRANSPORTATION	RANDALL ROAD STRIPING PLAN	F.A.U. RTE. 2505	SECTION 13-00054-00-RS	COUNTY KANE	TOTAL SHEETS 16	SHEET NO. 8	
	PLOT SCALE = #SCALE#	CHECKED -	REVISED -			SCALE: 1"=30' SHEET NO. 8 OF 16 SHEETS STA. 225+20 TO STA. 240+50					
	PLOT DATE = #DATE#	DRAWN -	REVISED -			CONTRACT NO. 63879					
		CHECKED -	REVISED -			FED. ROAD DIST. NO. [ILLINOIS] FED. AID PROJECT					



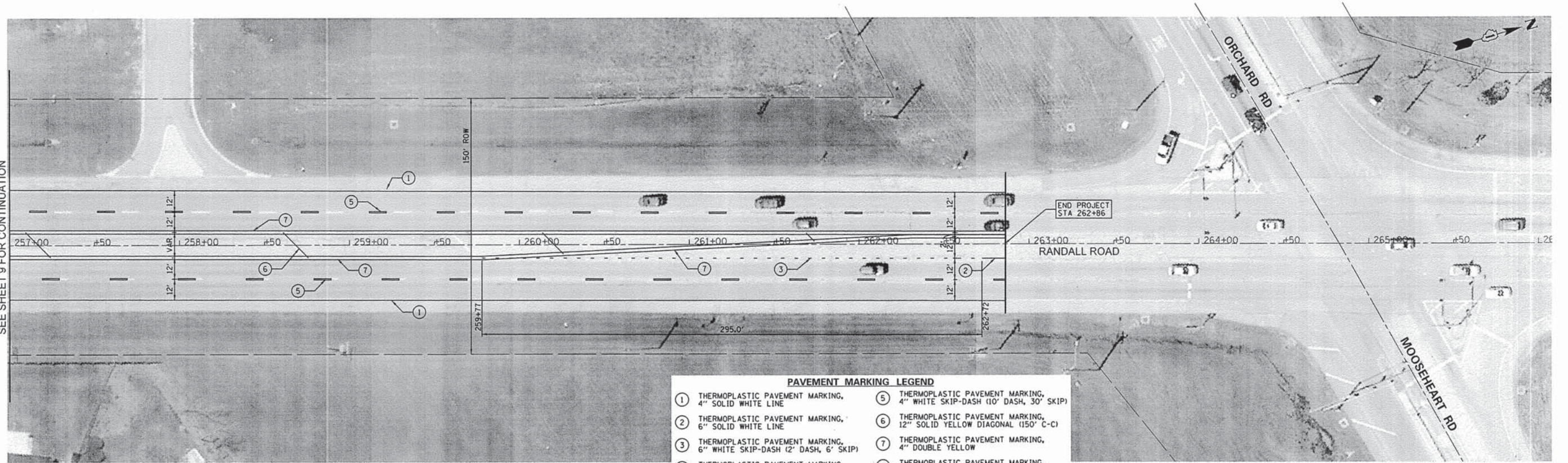
PAVEMENT MARKING LEGEND

① THERMOPLASTIC PAVEMENT MARKING, 4" SOLID WHITE LINE	⑤ THERMOPLASTIC PAVEMENT MARKING, 4" WHITE SKIP-DASH (10' DASH, 30' SKIP)
② THERMOPLASTIC PAVEMENT MARKING, 6" SOLID WHITE LINE	⑥ THERMOPLASTIC PAVEMENT MARKING, 12" SOLID YELLOW DIAGONAL (150' C-C)
③ THERMOPLASTIC PAVEMENT MARKING, 6" WHITE SKIP-DASH (2' DASH, 6' SKIP)	⑦ THERMOPLASTIC PAVEMENT MARKING, 4" DOUBLE YELLOW
③A THERMOPLASTIC PAVEMENT MARKING, 6" YELLOW SKIP-DASH (2' DASH, 6' SKIP)	⑧ THERMOPLASTIC PAVEMENT MARKING, LETTERS AND SYMBOLS
④ THERMOPLASTIC PAVEMENT MARKING, 24" SOLID WHITE	



FILE NAME = #FILE#	USER NAME = #USER#	DESIGNED -	REVISED -	STATE OF ILLINOIS DEPARTMENT OF TRANSPORTATION	RANDALL ROAD STRIPING PLAN	F.A.U. RTE. 2505	SECTION 13-00054-00-R5	COUNTY KANE	TOTAL SHEETS 16	SHEET NO. 9	
	PLOT SCALE = #SCALE#	CHECKED -	REVISED -			SCALE: 1"=30'	SHEET NO. 9 OF 16 SHEETS	FED. ROAD DIST. NO.	ILLINOIS FED. AID PROJECT	CONTRACT NO. 63879	
	PLOT DATE = #DATE#	DRAWN -	REVISED -			STA. 240+50	TO STA. 257+00				
		CHECKED -	REVISED -								

MATCHLINE STA 257+00
SEE SHEET 9 FOR CONTINUATION



PAVEMENT MARKING LEGEND

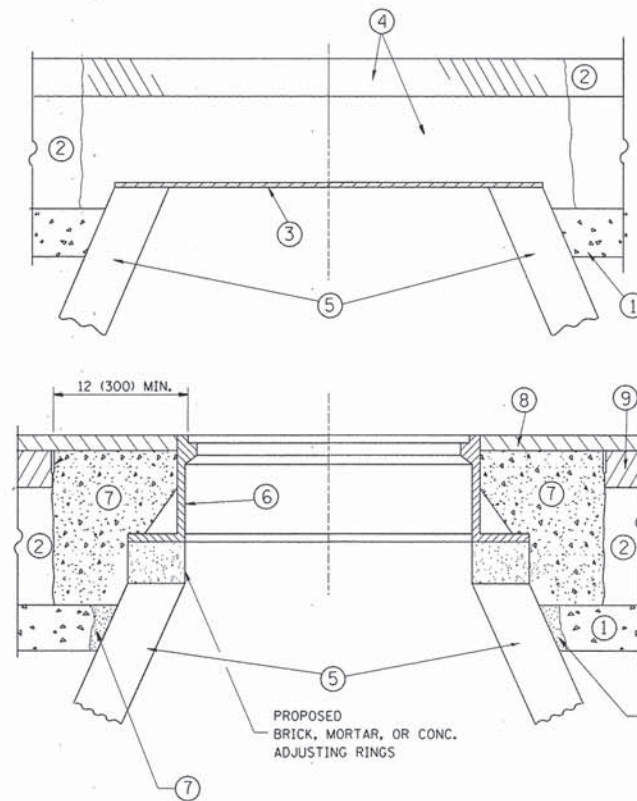
① THERMOPLASTIC PAVEMENT MARKING, 4" SOLID WHITE LINE	⑤ THERMOPLASTIC PAVEMENT MARKING, 4" WHITE SKIP-DASH (10' DASH, 30' SKIP)
② THERMOPLASTIC PAVEMENT MARKING, 6" SOLID WHITE LINE	⑥ THERMOPLASTIC PAVEMENT MARKING, 12" SOLID YELLOW DIAGONAL (150' C-C)
③ THERMOPLASTIC PAVEMENT MARKING, 6" WHITE SKIP-DASH (2' DASH, 6' SKIP)	⑦ THERMOPLASTIC PAVEMENT MARKING, 4" DOUBLE YELLOW
④ THERMOPLASTIC PAVEMENT MARKING, 24" SOLID WHITE	⑧ THERMOPLASTIC PAVEMENT MARKING, LETTERS AND SYMBOLS

FILE NAME =	USER NAME = #USER#	DESIGNED -	REVISED -
#FILE#		CHECKED -	REVISED -
		DRAWN -	REVISED -
		CHECKED -	REVISED -

**STATE OF ILLINOIS
DEPARTMENT OF TRANSPORTATION**

RANDALL ROAD STRIPING PLAN	
SCALE: 1"=30'	SHEET NO. 10 OF 16 SHEETS
STA. 257+00	TO STA. 262+86

F.A.J. RTE.	SECTION	COUNTY	TOTAL SHEETS	SHEET NO.
2505	13-00054-00-RS	KANE	16	10
FED. ROAD DIST. NO. ILLINOIS FED. AID PROJECT			CONTRACT NO. 63879	



NOTES:

EXISTING BROKEN FRAMES AND LIDS SHALL BE REMOVED AND DISPOSED OF BY THE CONTRACTOR AND SHALL BE REPLACED AS DIRECTED BY THE ENGINEER. REPLACEMENT FRAMES AND LIDS WILL BE PAID FOR IN ACCORDANCE WITH ARTICLE 109.04 OF THE STANDARD SPECIFICATIONS UNLESS A SEPARATE PAY ITEM HAS BEEN PROVIDED.

IF THE EXISTING LIDS ARE OPEN, THE FRAME WILL BE ADJUSTED TO THE ELEVATION OF THE MILLED PAVEMENT SURFACE PRIOR TO THE MILLING OPERATION. THE FRAME WILL NOT BE REMOVED AND COVERED BY THE METAL PLATE.

CITY OF CHICAGO CASTINGS ARE THE PROPERTY OF THE CITY AND THE CONTRACTOR SHALL NOTIFY THE CITY FOR REMOVAL AND DISPOSITION OF THE CASTINGS.

THE METAL PLATE USED TO COVER THE STRUCTURE SHALL REMAIN THE PROPERTY OF THE CONTRACTOR.

WHEN STRUCTURES ARE TO BE ADJUSTED OR RECONSTRUCTED, THE LOWERING AND RAISING OF THE FRAMES AND LIDS WILL NOT BE PAID FOR SEPARATELY BUT WILL BE INCLUDED IN THE COST OF THE CORRESPONDING PAY ITEM.

CONSTRUCTION PROCEDURES

STAGE 1 (BEFORE PAVEMENT MILLING)

- A) REMOVE A MINIMUM OF 12 (300) OF THE PAVEMENT FROM AROUND THE STRUCTURE.
- B) REMOVE THE EXISTING FRAME AND LID FROM THE STRUCTURE.
- C) COVER THE STRUCTURE OPENING WITH A 36 (900) DIAMETER METAL PLATE.
- D) BACKFILL WITH CRUSHED STONE AND A MINIMUM 1/2 (40) THICK HMA SURFACE MIX APPROVED BY THE ENGINEER.

STAGE 2 (AFTER PAVEMENT MILLING)

- A) REMOVE THE HMA SURFACE MIX AND CRUSHED STONE.
- B) INSTALL THE FRAME AND LID; ADJUST THE FRAME TO ITS FINAL SURFACE ELEVATION.
- C) THE SURROUNDING SPACE SHALL BE FILLED WITH CLASS PP-1* CONCRETE TO THE ELEVATION OF THE SURFACE OF THE EXISTING BASE COURSE OR THE BINDER COURSE.

* UNLESS OTHERWISE SPECIFIED IN THE PLANS.

THE PROCEDURE EXPLAINED ABOVE SHALL CONFORM TO THE APPLICABLE PORTIONS OF SECTIONS 353, 406, 602, AND 603 OF THE STANDARD SPECIFICATIONS EXCEPT THAT "THE CONTRACTOR SHALL ADJUST THE STRUCTURES TO THE FINISHED PAVEMENT ELEVATION NO MORE THAN 5 CALENDAR DAYS PRIOR TO PLACEMENT OF THE FINAL LIFT OF SURFACE UNLESS APPROVED BY THE ENGINEER."

LEGEND

- ① SUB-BASE GRANULAR MATERIAL
- ② EXISTING PAVEMENT
- ③ 36 (900) DIAMETER METAL PLATE
- ④ PROPOSED CRUSHED STONE AND HMA SURFACE MIX
- ⑤ EXISTING STRUCTURE
- ⑥ FRAME AND LID (SEE NOTES)
- ⑦ CLASS PP-1* CONCRETE
- ⑧ PROPOSED HMA SURFACE COURSE
- ⑨ PROPOSED HMA BINDER COURSE

LOCATION OF STRUCTURES:

THE CONTRACTOR WILL BE REQUIRED TO KEEP A RECORD OF THE LOCATIONS OF THE BURIED STRUCTURES ACCORDING TO THE STATION AND DISTANCE LEFT OR RIGHT OF THE CENTERLINE OF PAVEMENT. UPON COMPLETION OF THE WORK, THE CONTRACTOR WILL DELIVER THE RECORD TO THE ENGINEER.

BASIS OF PAYMENT:

REMOVING FRAMES AND LIDS ON DRAINAGE AND UTILITY STRUCTURES IN THE PAVEMENT PRIOR TO MILLING, AND ADJUSTING TO FINAL GRADE PRIOR TO PLACING THE SURFACE COURSE, WILL BE PAID FOR AT THE CONTRACT UNIT PRICE EACH FOR "FRAMES AND LIDS TO BE ADJUSTED (SPECIAL)."

THIS WORK WILL NOT BE PAID FOR WHEN DRAINAGE AND UTILITY STRUCTURES ARE SPECIFIED FOR PAYMENT AS STRUCTURE RECONSTRUCTION.

NEW FRAMES AND LIDS, WHEN SPECIFIED, WILL BE PAID FOR SEPARATELY.

DETAILS FOR FRAMES AND LIDS ADJUSTMENT WITH MILLING

ALL DIMENSIONS ARE IN INCHES (MILLIMETERS) UNLESS OTHERWISE SHOWN

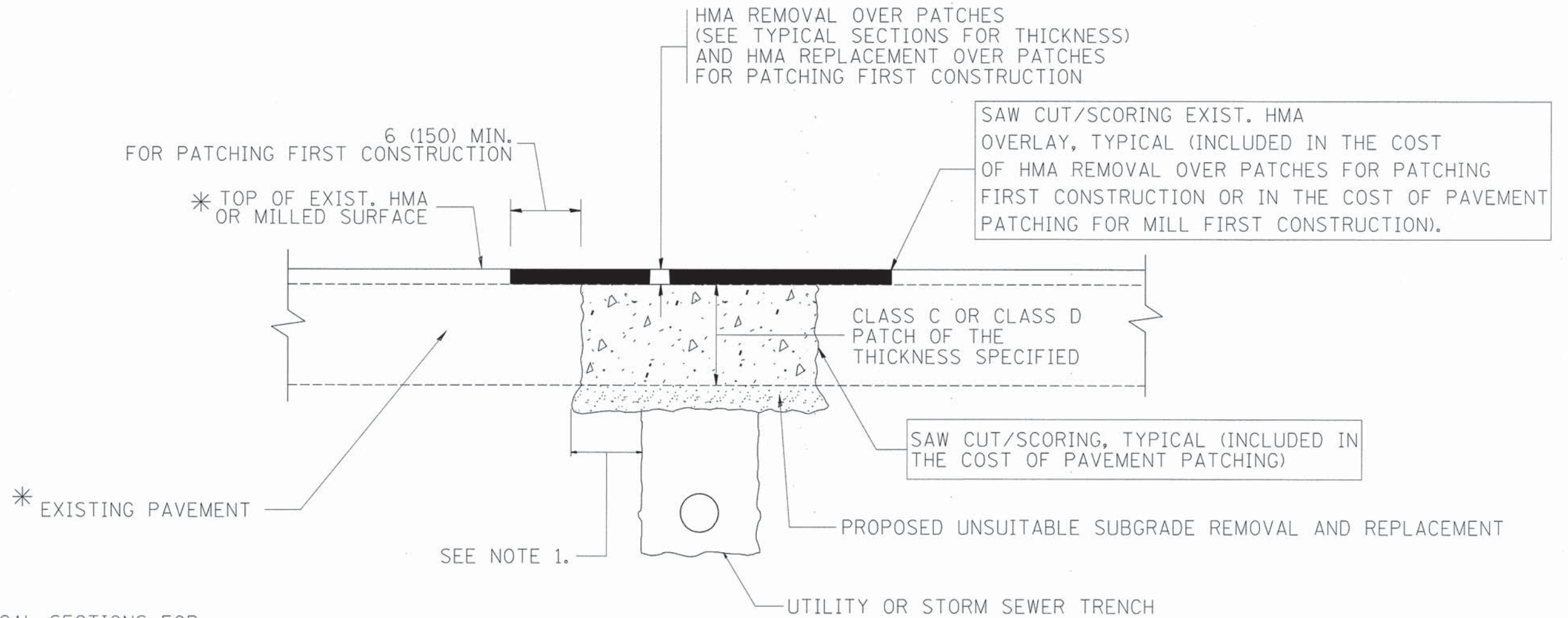
FILE NAME =	USER NAME = #USER#	DESIGNED - R. SHAH	REVISED - R. WIEDEMAN 05-14-04
#FILE#		DRAWN -	REVISED - R. BORO 01-01-07
	PLOT SCALE = #SCALE#	CHECKED -	REVISED - R. BORO 03-09-11
	PLOT DATE = #DATE#	DATE - 10-25-94	REVISED - R. BORO 12-06-11

**STATE OF ILLINOIS
DEPARTMENT OF TRANSPORTATION**

**DETAILS FOR
FRAMES AND LIDS ADJUSTMENT WITH MILLING**

SCALE: NONE SHEET NO. 11 OF 16 SHEETS STA. TO STA.

F.A.U. RTE.	SECTION	COUNTY	TOTAL SHEETS	SHEET NO.
2505	13-00054-00-RS	KANE	16	11
BD600-03 (BD-8)			CONTRACT NO. 63879	
FED. ROAD DIST. NO. 1 (ILLINOIS) FED. AID PROJECT				



* SEE TYPICAL SECTIONS FOR THICKNESS AND MATERIALS

NOTES:

1. THE WIDTH OF THE FULL DEPTH PATCH OVER A TRENCH SHALL BE 12 (300) WIDER ON EACH SIDE OF THE TRENCH.
2. FOR METHOD OF MEASUREMENT AND BASIS OF PAYMENT, SEE RECURRING SPECIAL PROVISION "PATCHING WITH HOT-MIX ASPHALT OVERLAY REMOVAL".

SEQUENCE OF CONSTRUCTION (PATCHING FIRST)

1. REMOVE THE EXISTING HMA MATERIAL OVER THE AREA TO BE PATCHED.
2. REMOVE AND REPLACE WITH CLASS C OR D PATCH.
3. REPLACE HMA MATERIAL OVER THE AREA TO BE PATCHED.

SEQUENCE OF CONSTRUCTION (MILLING FIRST)

1. MILL HMA FIRST IF THERE IS AT LEAST 4 1/2 INCHES OR MORE OF HMA MATERIAL ON TOP OF THE EXISTING PAVEMENT OR IF THE PAVEMENT IS FULL DEPTH HMA. A MINIMUM OF 2 INCHES OF HMA MATERIAL SHALL BE IN PLACE AFTER MILLING.
2. REMOVE AND REPLACE WITH FULL DEPTH CLASS D PATCHES TO TOP OF MILLED SURFACE.

ALL DIMENSIONS ARE IN INCHES (MILLIMETERS) UNLESS OTHERWISE SHOWN.

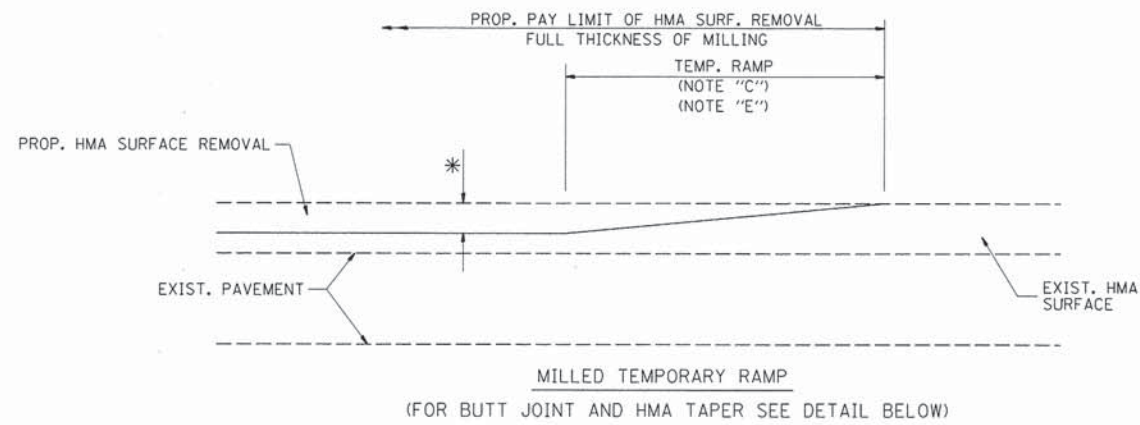
FILE NAME = #FILE#	USER NAME = #USER#	DESIGNED - R. SHAH	REVISED - A. ABBAS 04-27-98
		DRAWN -	REVISED - R. BORO 01-01-07
	PLOT SCALE = #SCALE#	CHECKED -	REVISED - R. BORO 09-04-07
	PLOT DATE = #DATE#	DATE - 10-25-94	REVISED - K. ENG 10-27-08

**STATE OF ILLINOIS
DEPARTMENT OF TRANSPORTATION**

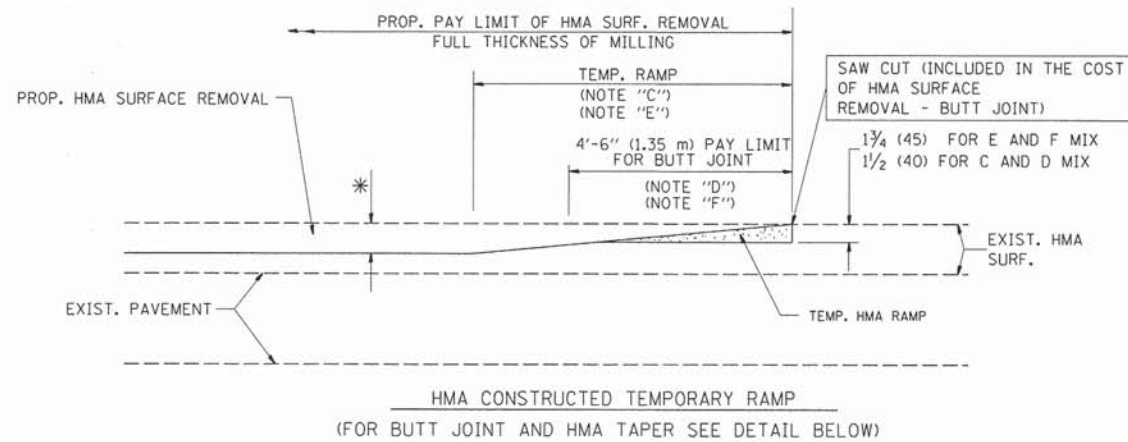
**PAVEMENT PATCHING FOR
HMA SURFACED PAVEMENT**

SCALE: NONE SHEET NO. 12 OF 16 SHEETS STA. TO STA.

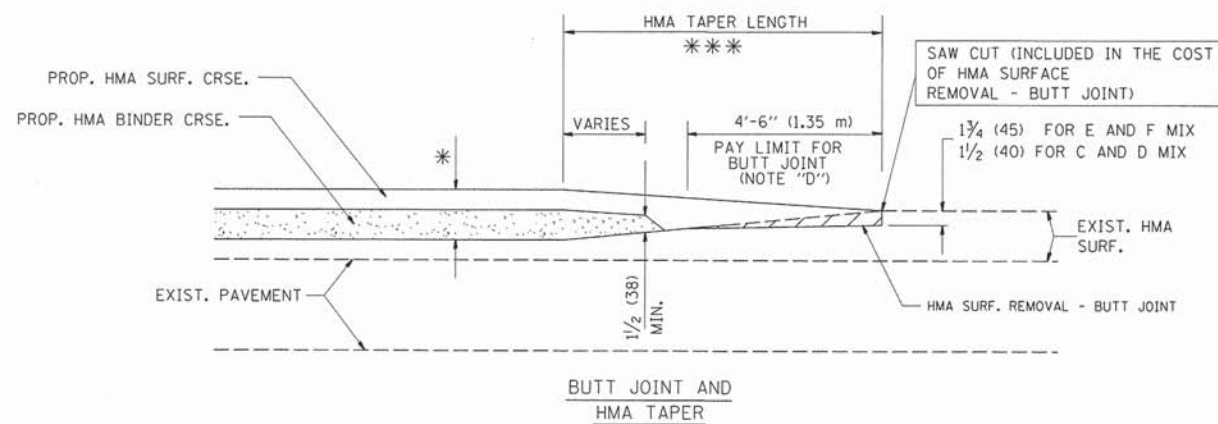
F.A.U. RTE.	SECTION	COUNTY	TOTAL SHEETS	SHEET NO.
2505	13-00054-00-RS	KANE	16	12
BD400-04 (BD-22)			CONTRACT NO. 63879	
FED. ROAD DIST. NO. 1 ILLINOIS FED. AID PROJECT				



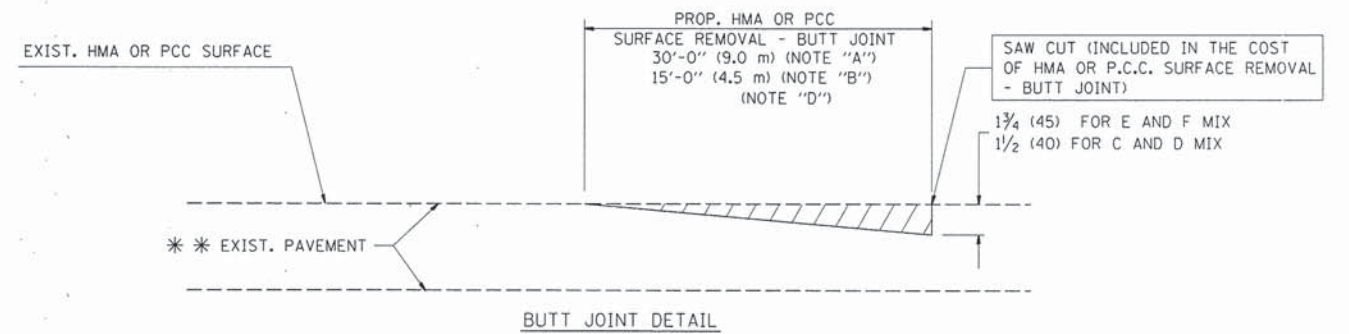
OPTION 1



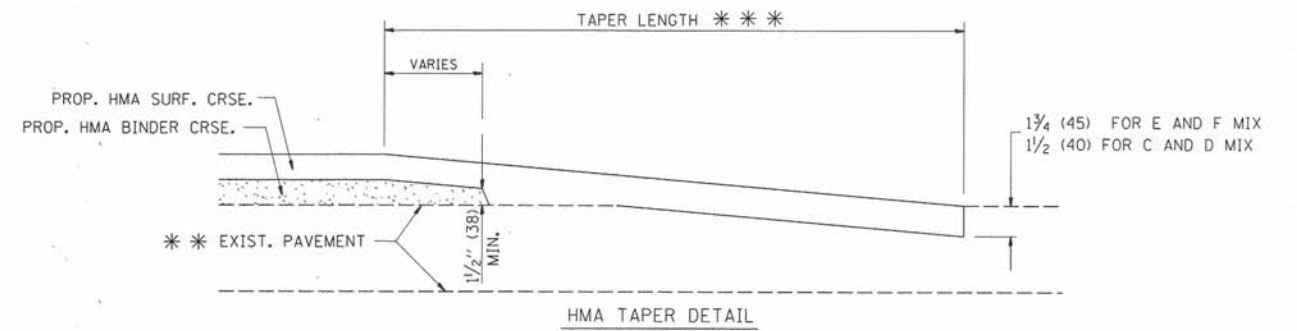
OPTION 2
TYPICAL TEMPORARY RAMP



TYPICAL BUTT JOINT AND HMA TAPER
FOR MILLING AND RESURFACING



BUTT JOINT DETAIL



HMA TAPER DETAIL

TYPICAL BUTT JOINT AND HMA TAPER
FOR RESURFACING ONLY

*** PC CONCRETE, HMA OR HMA RESURFACED PAVEMENT.

NOTES

- A: MAINLINE ROADWAYS AND MAJOR SIDE ROADS.
 - B: MINOR SIDE ROADS.
 - C: THE TEMP. RAMP SHALL BE CONSTRUCTED IMMEDIATELY UPON REMOVAL OF THE EXISTING HMA SURFACE.
 - D: THE BUTT JOINT SHALL BE CONSTRUCTED IMMEDIATELY PRIOR TO PLACING THE PROPOSED HMA COURSES.
 - E: TAPER THE TEMP. RAMP AT A RATE OF 3'-0" (900 mm) PER 1 INCH (25 mm) OF MILLING THICKNESS.
 - F: INSTALLATION AND REMOVAL OF THE 4'-6" (1.35 m) TEMP. RAMP IS INCLUDED IN COST OF HMA SURFACE REMOVAL - BUTT JOINT
 - G: SEE ARTICLE 406.08 AND 406.14 OF THE STANDARD SPECIFICATIONS FOR "HMA AND/OR PCC SURFACE REMOVAL, BUTT JOINT".
- * SEE TYPICAL SECTIONS FOR MILLING THICKNESS.
- *** 20'-0" (6.1 m) PER 1 (25) RESURFACING (NOTE "A")
10'-0" (3.0 m) PER 1 (25) RESURFACING (NOTE "B")

BASIS OF PAYMENT:

THE BUTT JOINT WILL BE PAID FOR AT THE CONTRACT UNIT PRICE PER SQUARE YARD (SQUARE METER) FOR "HOT-MIX ASPHALT SURFACE REMOVAL - BUTT JOINT" OR FOR "PORTLAND CEMENT CONCRETE SURFACE REMOVAL - BUTT JOINT".

ALL DIMENSIONS ARE IN INCHES (MILLIMETERS) UNLESS OTHERWISE SHOWN.

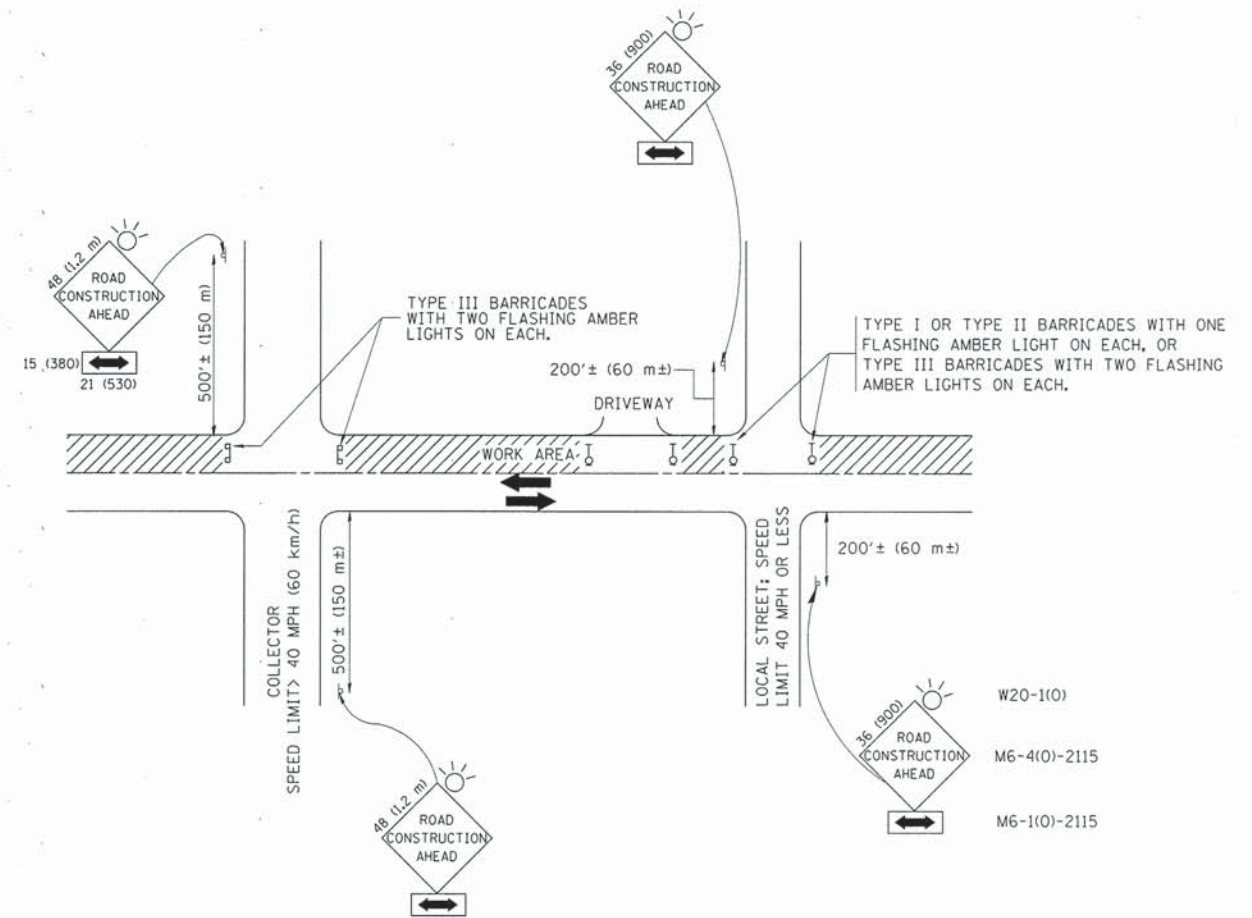
FILE NAME = #FILE#	USER NAME = #USER#	DESIGNED - M. DE YONG	REVISED - R. SHAH 10-25-94
		DRAWN -	REVISED - A. ABBAS 03-21-97
	PLOT SCALE = #SCALE#	CHECKED -	REVISED - M. GOMEZ 04-06-01
	PLOT DATE = #DATE#	DATE - 06-13-90	REVISED - R. BORO 01-01-07

STATE OF ILLINOIS
DEPARTMENT OF TRANSPORTATION

BUTT JOINT AND
HMA TAPER DETAILS

SCALE: NONE SHEET NO. 13 OF 16 SHEETS STA. TO STA.

F.A.U. RTE. 2505	SECTION 13-00054-00-R5	COUNTY KANE	TOTAL SHEETS 16	SHEET NO. 13
BD400-05 BD32		CONTRACT NO. 63879		
FED. ROAD DIST. NO. 1 ILLINOIS FED. AID PROJECT				



TRAFFIC CONTROL AND PROTECTION FOR SIDE ROADS, INTERSECTIONS, AND DRIVEWAYS

NOTES:

A. FOR NO LANE RESTRICTION ON THE SIDE ROAD OR DRIVEWAYS

1. SIDE ROAD WITH A SPEED LIMIT OF 40 MPH (60 km/h) OR LESS AS SHOWN ON THE DRAWING AND AS DIRECTED BY THE ENGINEER:
 - a) ONE ROAD CONSTRUCTION AHEAD SIGN 36 x 36 (900x900) WITH A FLASHER AND FLAG MOUNTED ON IT APPROXIMATELY 200' (60 m) IN ADVANCE OF THE MAIN ROUTE.
 - b) THE CLOSED PORTION OF THE MAIN ROUTE SHALL BE PROTECTED BY BLOCKING WITH TYPE I, TYPE II OR TYPE III BARRICADES, 1/3 OF THE CROSS SECTION OF THE CLOSED PORTION.
2. SIDE ROAD WITH A SPEED LIMIT GREATER THAN 40 MPH (60 km/h) AS SHOWN ON THE DRAWING AND AS DIRECTED BY THE ENGINEER:
 - a) ONE ROAD CONSTRUCTION AHEAD SIGN 48 x 48 (1,2 m x 1,2 m) WITH A FLASHER MOUNTED ON IT APPROXIMATELY 500' (150 m) IN ADVANCE OF THE MAIN ROUTE.
 - b) THE CLOSED PORTION OF THE MAIN ROUTE SHALL BE PROTECTED BY BLOCKING WITH TYPE III BARRICADES, 1/2 OF THE CROSS SECTION OF THE CLOSED PORTION.
3. WHEN THE SIDE ROAD LIES BETWEEN THE BEGINNING OF THE MAINLINE SIGNING AND THE WORK ZONE, A SINGLE HEADED ARROW (M6-1) SHALL BE USED IN LIEU OF THE DOUBLE HEADED ARROW (M6-4).

B. FOR A LANE CLOSURE ON A SIDE ROAD OR DRIVEWAY:

USE APPLICABLE PORTIONS OF THE TYPICAL APPLICATION OF TRAFFIC CONTROL DEVICES (STD. 701501, STD. 701606 OR THE APPROPRIATE STANDARD). THE SPACING OF SIGNS AND BARRICADES SHALL BE ADJUSTED FOR FIELD CONDITIONS AS DIRECTED BY THE ENGINEER. THE DIRECTIONAL ARROW SHALL BE COVERED OR REMOVED WHEN NO LONGER CONSISTENT WITH THE SIDE ROAD LANE CLOSURE.

C. ADVANCE WARNING SIGNS ARE TO BE OMITTED ON DRIVEWAY UNLESS OTHERWISE NOTED.

D. THE TRAFFIC CONTROL AND PROTECTION FOR SIDE ROADS, INTERSECTIONS, AND DRIVEWAYS SHALL BE INCIDENTAL TO THE COST OF SPECIFIED TRAFFIC CONTROL STANDARDS OR ITEMS.

All dimensions are in millimeters (inches) unless otherwise shown.

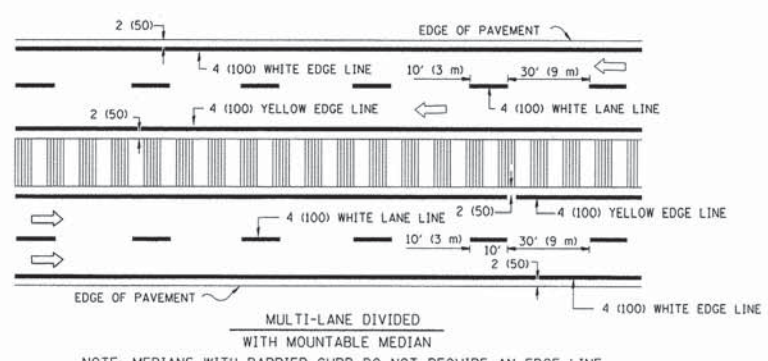
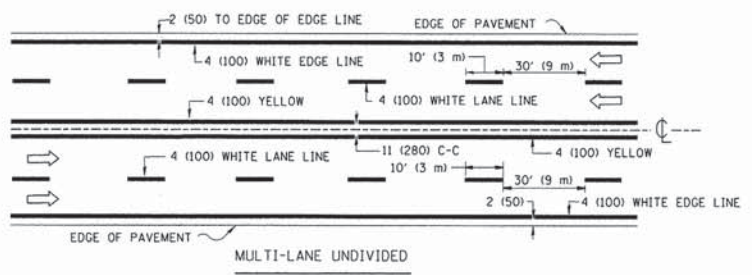
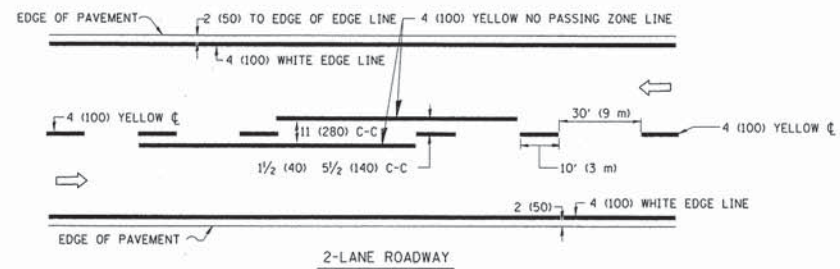
FILE NAME =	USER NAME = #USER#	DESIGNED - LHA	REVISED - J. OBERLE 10-18-95
#FILEL#		DRAWN -	REVISED - A. HOUSEH 03-06-96
	PLOT SCALE = #SCALE#	CHECKED -	REVISED - A. HOUSEH 10-15-96
	PLOT DATE = #DATE#	DATE - 06-89	REVISED - T. RAMMACHER 01-06-00

STATE OF ILLINOIS
DEPARTMENT OF TRANSPORTATION

TRAFFIC CONTROL AND PROTECTION FOR
SIDE ROADS, INTERSECTIONS, AND DRIVEWAYS

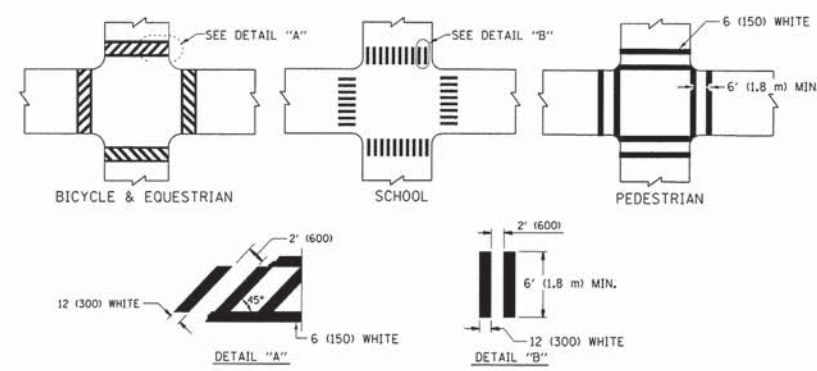
SCALE: NONE SHEET NO. 14 OF 16 SHEETS STA. TO STA.

F.A.J. RTE.	SECTION	COUNTY	TOTAL SHEETS	SHEET NO.
2505	13-00054-00-RS	KANE	16	14
TC-10			CONTRACT NO. 63879	
FED. ROAD DIST. NO. 1 ILLINOIS FED. AID PROJECT				

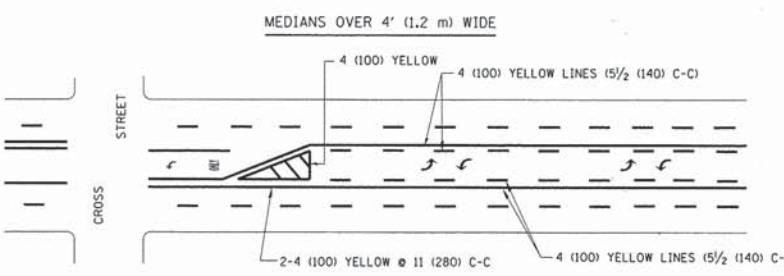
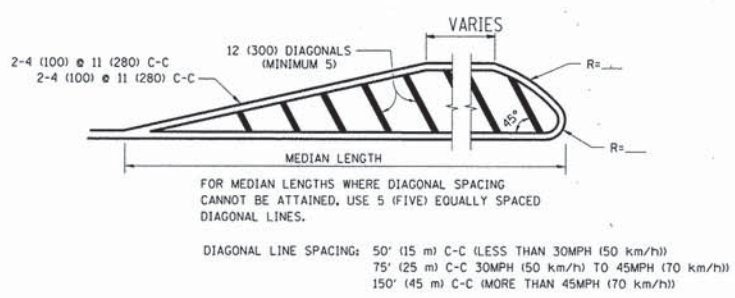
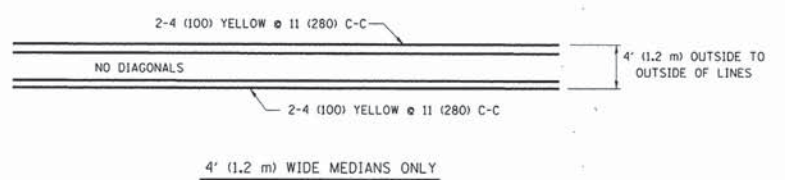


NOTE: MEDIANS WITH BARRIER CURB DO NOT REQUIRE AN EDGE LINE

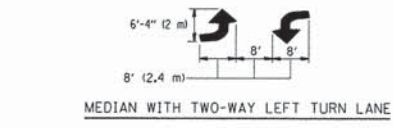
TYPICAL LANE AND EDGE LINE MARKING



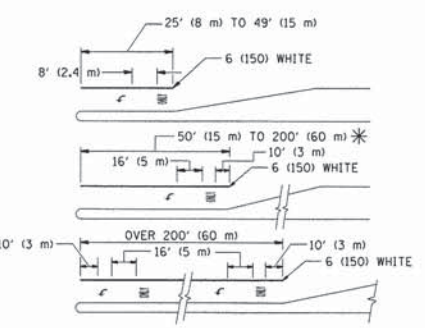
TYPICAL CROSSWALK MARKING



A MINIMUM OF TWO PAIRS OF TURN ARROWS SHALL BE USED, WHITE IN COLOR. ADDITIONAL PAIRS SHALL BE PLACED AT 200' (60 m) TO 300' (90 m) INTERVALS.

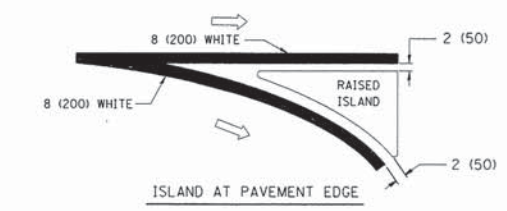
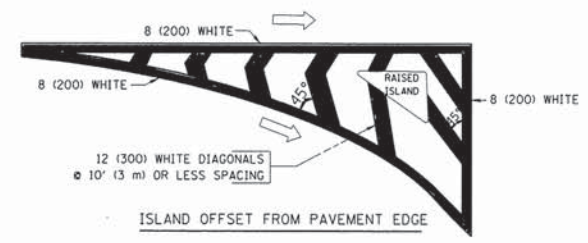


TYPICAL LEFT (OR RIGHT) TURN LANE MARKING



FULL SIZE LETTERS 8' (2.4 m) AND ARROWS SHALL BE USED.
 * TURN LANES IN EXCESS OF 400' (120 m) IN LENGTH MAY HAVE AN ADDITIONAL SET OF ARROW - "ONLY" INSTALLED MIDWAY BETWEEN THE OTHER TWO SETS OF ARROW - "ONLY".

TYPICAL TURN LANE MARKING



TYPICAL ISLAND MARKING

TYPE OF MARKING	WIDTH OF LINE	PATTERN	COLOR	SPACING / REMARKS
CENTERLINE ON 2 LANE PAVEMENT	4 (100)	SKIP-DASH	YELLOW	10' (3 m) LINE WITH 30' (9 m) SPACE
CENTERLINE ON MULTI-LANE UNDIVIDED PAVEMENT	2 @ 4 (100)	SOLID	YELLOW	11 (280) C-C
NO PASSING ZONE LINES: FOR ONE DIRECTION FOR BOTH DIRECTIONS	4 (100) 2 @ 4 (100)	SOLID SOLID	YELLOW YELLOW	5/2' (140) C-C FROM SKIP-DASH CENTERLINE 11 (280) C-C OMIT SKIP-DASH CENTERLINE BETWEEN
LANE LINES	4 (100) 5 (125) ON FREEWAYS	SKIP-DASH SKIP-DASH	WHITE WHITE	10' (3 m) LINE WITH 30' (9 m) SPACE
DOTTED LINES (EXTENSIONS OF CENTER, LANE OR TURN LANE MARKINGS)	SAME AS LINE BEING EXTENDED	SKIP-DASH	SAME AS LINE BEING EXTENDED	2' (600) LINE WITH 6' (1.8 m) SPACE
EDGE LINES	4 (100)	SOLID	YELLOW-LEFT WHITE-RIGHT	OUTLINE MOUNTABLE MEDIANS IN YELLOW; EDGE LINES ARE NOT USED NEXT TO BARRIER CURB
TURN LANE MARKINGS	6 (150) LINE; FULL SIZE LETTERS & SYMBOLS (8' (2.4m))	SOLID	WHITE	SEE TYPICAL TURN LANE MARKING DETAIL
TWO WAY LEFT TURN MARKING	2 @ 4 (100) EACH DIRECTION 8' (2.4m) LEFT ARROW	SKIP-DASH AND SOLID IN PAIRS	YELLOW WHITE	10' (3 m) LINE WITH 30' (9 m) SPACE FOR SKIP-DASH; 5/2' (140) C-C BETWEEN SOLID LINE AND SKIP-DASH LINE SEE TYPICAL TWO-WAY LEFT TURN MARKING DETAIL
CROSSWALK LINES (PEDESTRIAN) A. DIAGONALS (BIKE & EQUESTRIAN) B. LONGITUDINAL BARS (SCHOOL)	2 @ 6 (150) 12 (300) @ 45° 12 (300) @ 90°	SOLID SOLID SOLID	WHITE WHITE WHITE	NOT LESS THAN 6' (1.8 m) APART 2' (600) APART 2' (600) APART SEE TYPICAL CROSSWALK MARKING DETAILS.
STOP LINES	24 (600)	SOLID	WHITE	PLACE 4' (1.2 m) IN ADVANCE OF AND PARALLEL TO CROSSWALK, IF PRESENT. OTHERWISE, PLACE AT DESIRED STOPPING POINT, PARALLEL TO CROSSROAD CENTERLINE, WHERE POSSIBLE
PAINTED MEDIANS	2 @ 4 (100) WITH 12 (300) DIAGONALS @ 45° NO DIAGONALS USED FOR 4' (1.2 m) WIDE MEDIANS	SOLID	YELLOW; TWO WAY TRAFFIC WHITE; ONE WAY TRAFFIC	11 (280) C-C FOR THE DOUBLE LINE SEE TYPICAL PAINTED MEDIAN MARKING.
GORE MARKING AND CHANNELIZING LINES	8 (200) WITH 12 (300) DIAGONALS @ 45°	SOLID	WHITE	DIAGONALS: 15' (4.5 m) C-C (LESS THAN 30MPH (50 km/h)) 20' (6 m) C-C (30MPH (50 km/h) TO 45MPH (70 km/h)) 30' (9 m) C-C (OVER 45MPH (70 km/h))
RAILROAD CROSSING	24 (600) TRANSVERSE LINES; "RR" 15 6' (1.8 m) LETTERS; 16 (400) LINE FOR "X"	SOLID	WHITE	SEE STATE STANDARD 78000 AREA OF: "R"=3.6 SQ. FT. (0.33 m ²) EACH "X"=54.0 SQ. FT. (5.0 m ²)
SHOULDER DIAGONALS	12 (300) @ 45°	SOLID	WHITE - RIGHT YELLOW - LEFT	50' (15 m) C-C (LESS THAN 30MPH (50 km/h)) 75' (25 m) C-C (30 MPH (50 km/h) TO 45MPH (70 km/h)) 150' (45 m) C-C (OVER 45MPH (70 km/h))

FOR FURTHER DETAILS ON PAVEMENT MARKING REFER TO STANDARD SPECIFICATIONS FOR ROAD AND BRIDGE CONSTRUCTION AND STATE STANDARD 78000.

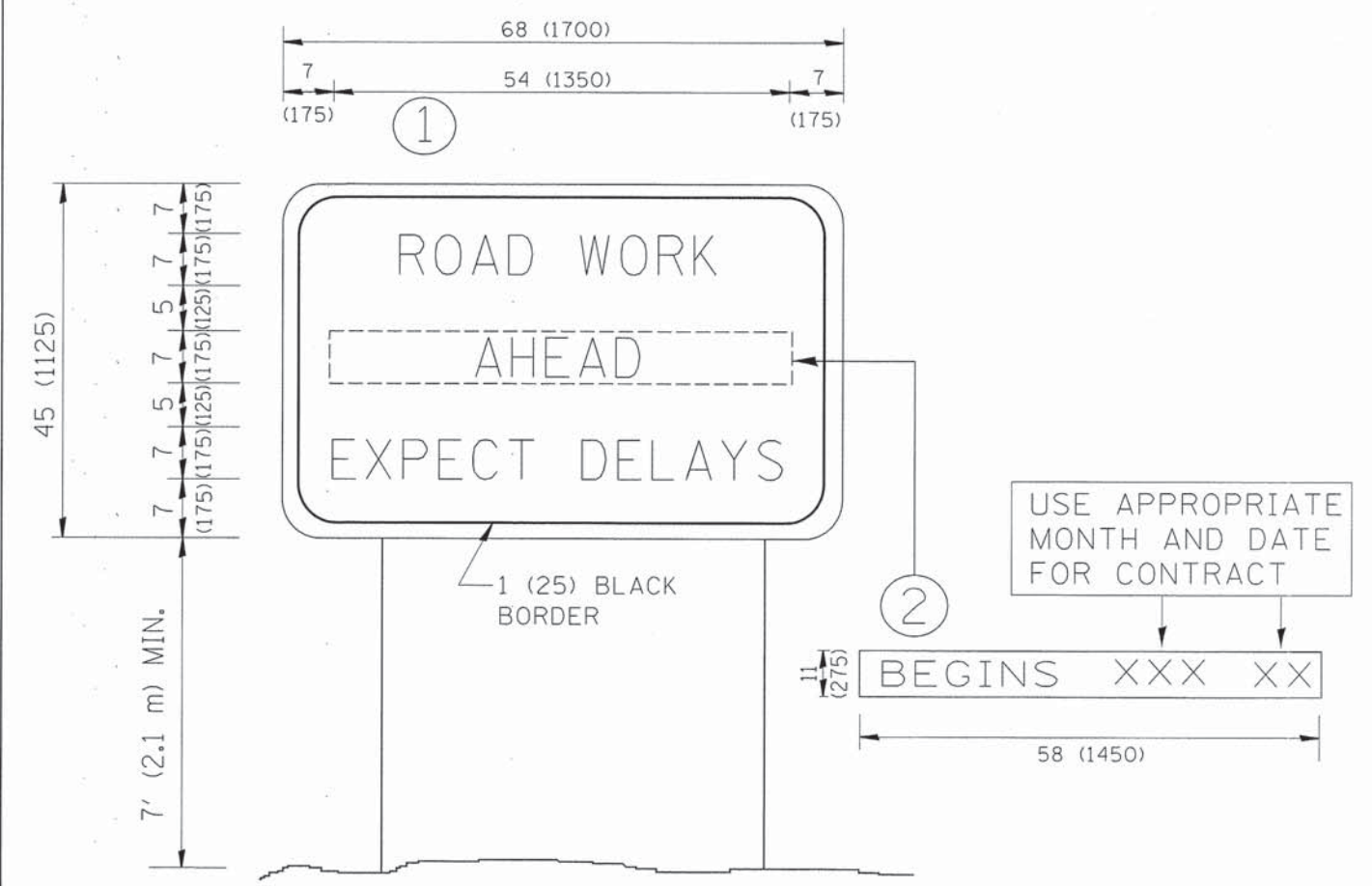
All dimensions are in inches (millimeters) unless otherwise shown.

FILE NAME = #FILE#	USER NAME = #USER#	DESIGNED - EVERS	REVISED - T. RAMMACHER 10-27-94
		DRAWN -	REVISED - C. JUCIUS 09-09-09
		CHECKED -	REVISED -
		DATE - 03-19-90	REVISED -

STATE OF ILLINOIS
DEPARTMENT OF TRANSPORTATION

DISTRICT ONE		F.A.U. RT#	SECTION	COUNTY	TOTAL SHEETS	SHEET NO.
TYPICAL PAVEMENT MARKINGS		2505	13-00054-00-RS	KANE	16	15
SCALE: NONE.		SHEET NO. 15 OF 16 SHEETS		STA.	TO STA.	

TC-13		FED. ROAD DIST. NO. 1 (ILLINOIS) FED. AID PROJECT
CONTRACT NO. 63879		



NOTES:

1. USE BLACK LETTERING ON ORANGE BACKGROUND.
2. ERECT SIGNS IN ADVANCE OF THE LOCATION FOR THE "ROAD CONSTRUCTION AHEAD" SIGN AT LOCATIONS AS DIRECTED BY THE ENGINEER.
3. ERECT SIGN ① WITH INSTALLED PANEL ② ONE WEEK PRIOR TO THE START OF CONSTRUCTION.
4. REMOVE PANEL ② SOON AFTER THE START OF CONSTRUCTION.
5. SEE SPECIAL PROVISION FOR "TEMPORARY INFORMATION SIGNING" FOR ADDITIONAL INFORMATION.
6. ONE SIGN ASSEMBLY EQUALS 25.70 SQ. FT. (2.3 SQ. M.)
7. SHALL BE PAID FOR AS TEMPORARY INFORMATION SIGNING.

ALL DIMENSIONS ARE IN INCHES (MILLIMETERS) UNLESS OTHERWISE SHOWN.

FILE NAME =	USER NAME = #USER#	DESIGNED -	REVISED - R. MIRS 09-15-97
#FILE#		DRAWN -	REVISED - R. MIRS 12-11-97
	PLOT SCALE = #SCALE#	CHECKED -	REVISED - T. RAMMACHER 02-02-99
	PLOT DATE = #DATE#	DATE -	REVISED - C. JUCIUS 01-31-07

STATE OF ILLINOIS
DEPARTMENT OF TRANSPORTATION

ARTERIAL ROAD
INFORMATION SIGN
SCALE: NONE SHEET NO. 16 OF 16 SHEETS STA. TO STA.

F.A.U. RTE.	SECTION	COUNTY	TOTAL SHEETS	SHEET NO.
2505	13-00054-00-RS	KANE	16	16
TC-22		CONTRACT NO. 63879		
FED. ROAD DIST. NO. 1 ILLINOIS FED. AID PROJECT				