

| | | | | |
|-------------|---------|----------|--------------------|-----------|
| F.A.S. RTE. | SECTION | COUNTY | TOTAL SHEETS | SHEET NO. |
| 646 | 5 BR-3 | CARROLL | 84 | 1 |
| | | ILLINOIS | CONTRACT NO. 64DB4 | |

D92-009-08



STATE OF ILLINOIS
DEPARTMENT OF TRANSPORTATION
DIVISION OF HIGHWAYS

SUBMITTED Oct. 16th 2013
Paul E. [Signature]
DEPUTY DIRECTOR OF HIGHWAYS, REGION ENGINEER

Dec 6 2013
John D. Baranzelli, PE
ENGINEER OF DESIGN AND ENVIRONMENT

Dec 6 2013
Omer Osman, PE
DIRECTOR OF HIGHWAYS, CHIEF ENGINEER

APPLIES TO SHEETS
1-23 AND 43-84

[Signature] 10-11-13
November 30, 2013
C.E.P.R.S.

PRINTED BY THE AUTHORITY
OF THE STATE OF ILLINOIS

STATE OF ILLINOIS
DEPARTMENT OF TRANSPORTATION
DIVISION OF HIGHWAYS
**PROPOSED
HIGHWAY PLANS**

FAP ROUTE 646 (IL 40)
SECTION 5 BR-3
PROJECT: ACF-0646(079)
BRIDGE REPLACEMENT
CARROLL COUNTY
C-92-058-11

FOR INDEX OF SHEETS, SEE SHEET 2

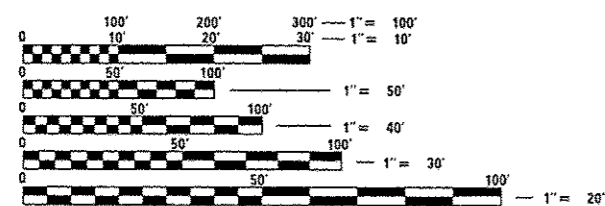
FOR LIST OF HIGHWAY STANDARDS, SEE SHEET 2

PREPARED BY:



ZROKA ENGINEERING, P.C.
LICENSE NO. 184-004783
4216 NORTH HERMITAGE
CHICAGO, IL 60613
TEL. 773-935-6376
CONTACT: DEBORAH ZROKA

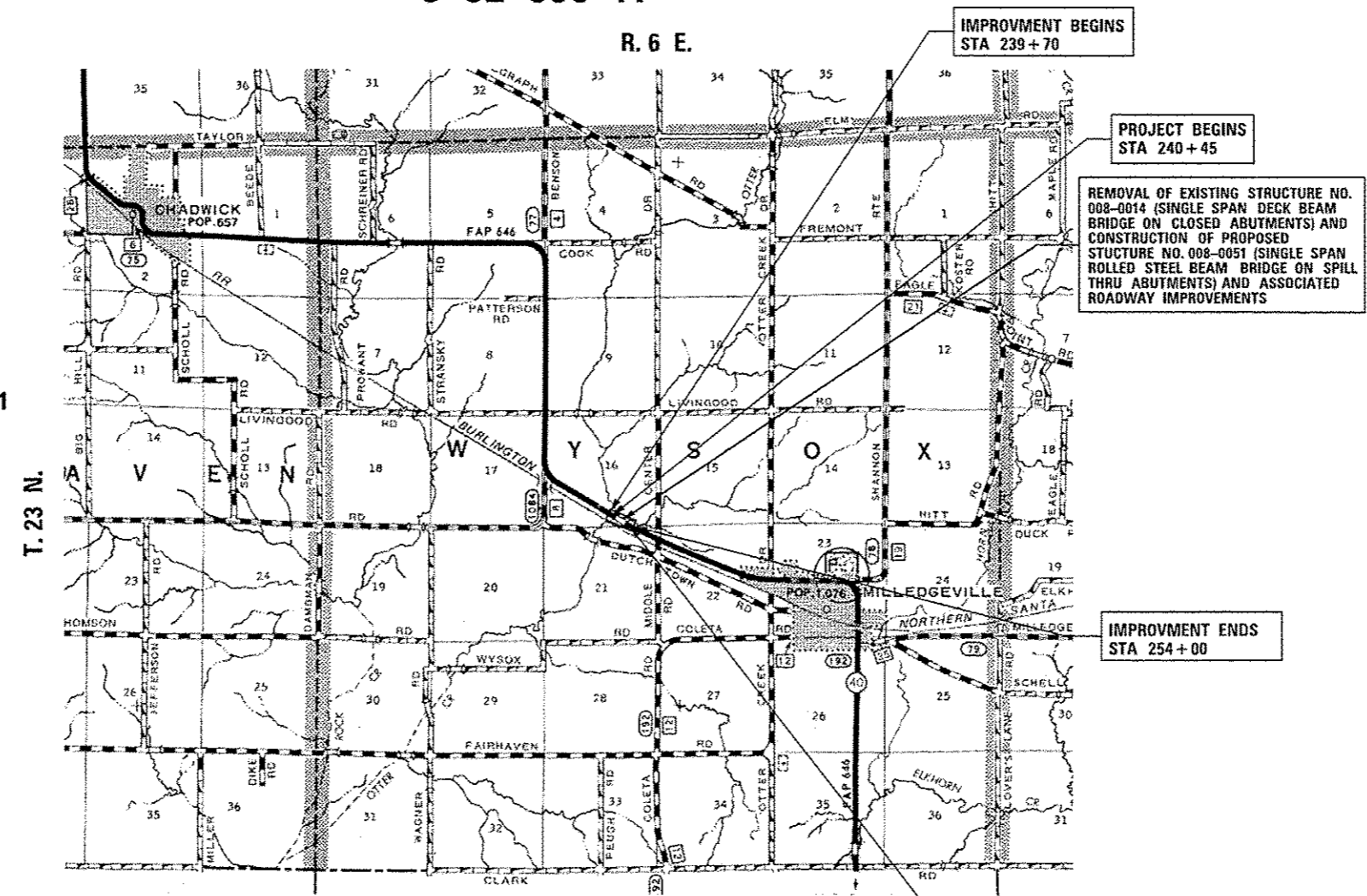
WYSOX TOWNSHIP: SECTION 16 & 21



FULL SIZE PLANS HAVE BEEN PREPARED USING STANDARD ENGINEERING SCALES. REDUCED SIZED PLANS WILL NOT CONFORM TO STANDARD SCALES. IN MAKING MEASUREMENTS ON REDUCED PLANS, THE ABOVE SCALES MAY BE USED.

J.U.L.I.E.
JOINT UTILITY LOCATION INFORMATION FOR EXCAVATION
1-800-892-0123
OR 811

PROJECT ENGINEER JASON FORD (815) 284-5942
PROJECT MANAGER BECKY MARRUFFO (815) 284-5902
CONTRACT NO. 64D84



LOCATION MAP
WYSOX TOWNSHIP
SCALE 1" = 0.8 MILE
GROSS LENGTH = 1430 FT. = 0.27 MILE
NET LENGTH = 1175 FT. = 0.22 MILE