

### INDEX TO SHEETS

Page No.	Title Page
1	Standard Cross Section 1032, 1130
2	12 Ft earth roadway
3	21ft Earth Culvert Section for future gutter section No. 992
4	Plan and Profile Sta 426+25 to Sta. 455+00
5	455+00 to 515+00
6	515+00 to 575+00
7	575+00 to 635+00
8	635+00 to 695+00
9	695+00 to 755+00 + 641+52
10	755+00 to 815+00
11	815+00 to 875+00
12	875+00 to 935+00
13	935+00 to 995+00
14	Inclusive Cross Sections
15	Standard Culvert Design No. 828-1, 828-3, 828-5, 752-1
16	828-1
17	Special Sta. 426+25 to 455+00
18	455+00 to 515+00
19	515+00 to 575+00
20	575+00 to 635+00
21	635+00 to 695+00
22	695+00 to 755+00
23	755+00 to 815+00
24	815+00 to 875+00
25	875+00 to 935+00
26	935+00 to 995+00
27	Drains
28	426+25 to 455+00
29	455+00 to 515+00
30	515+00 to 575+00
31	575+00 to 635+00
32	635+00 to 695+00
33	695+00 to 755+00
34	755+00 to 815+00
35	815+00 to 875+00
36	875+00 to 935+00
37	935+00 to 995+00
38	Standard 1166, 1177
39	Special Side Walk Cross Section

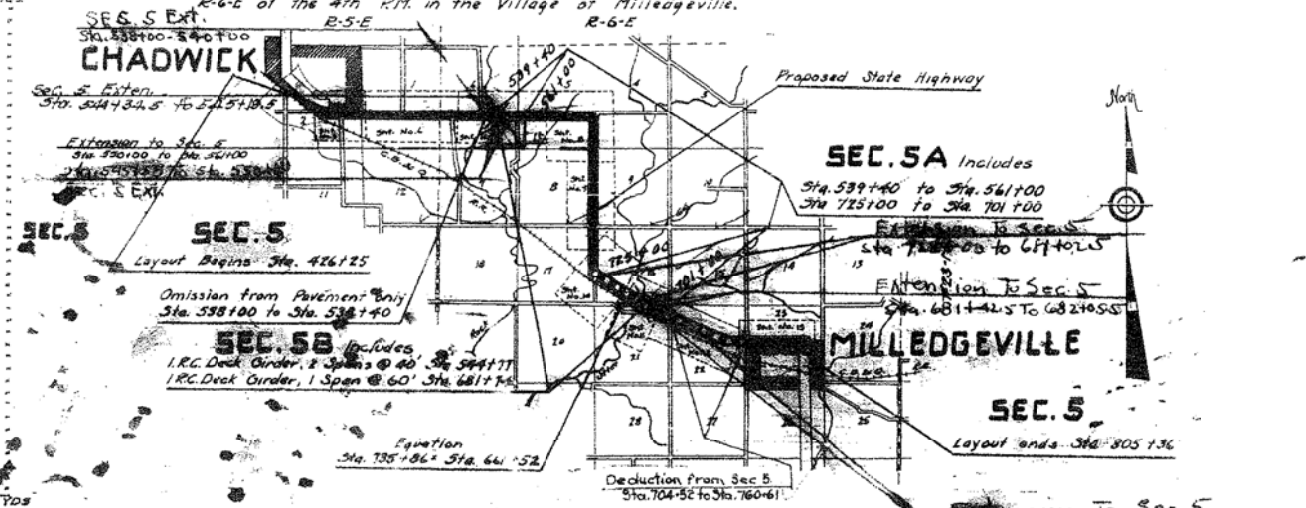
## SUMMARY OF QUANTITIES

### SUMMARY OF CONCRETE

SECTION	Item	Quantity	SECTION	Item	Quantity
SECTION 5	Class A Excavation	17	SECTION 5A	Class A Excavation	17
	Class B Excavation	17		Class B Excavation	17
	Class C Excavation	17		Class C Excavation	17
	Reinforcing Steel	17		Reinforcing Steel	17
	Concrete Side Walk	17		Concrete Side Walk	17
	Standard Culvert Design No. 828-1	17		Standard Culvert Design No. 828-1	17
	Special	17		Special	17
	Standard 1166, 1177	17		Standard 1166, 1177	17
	Special Side Walk Cross Section	17		Special Side Walk Cross Section	17
	SECTION 5B	Class A Concrete		542.0	SECTION 5B
Class B Concrete	391	Class B Concrete	391		
Class C Concrete	123	Class C Concrete	123		
Reinforcing Steel	87,328	Reinforcing Steel	87,328		
Unfinished Pk 10 Ton	1,200	Unfinished Pk 10 Ton	1,200		
Unfinished Pk 12 Ton	1,000	Unfinished Pk 12 Ton	1,000		
Reinforcing Steel	1,000	Reinforcing Steel	1,000		
Structural Steel (2x4)	540	Structural Steel (2x4)	540		
Name Plates	2	Name Plates	2		

## PROJECT 109, SEC'S. 5-5A-5B, CARROLL CO.

From a point near the N.W. Corner of the S.W. 1/4 of Section 2, T-23-N, R-5-E in the Village of Chadwick to a point near the N.E. Corner of the N.W. 1/4 of the S.E. 1/4 of Section 23, T-23-N, R-6-E of the 4th R.M. in the Village of Milledgeville.



## SUMMARY

Station to Station	Gross Length Along Transit Line	Corrections for Curves	Corrections for Relocations	Net Length to be Improved in feet	Pavement over Bridges	Sq. Yds. of Pavement & Roadway			
						18 Ft	21 Ft	18 Ft	Total
426+25 to 455+00	28.75	0.00	0.00	28.75	84	0	0	84	
455+00 to 515+00	60.00	0.00	0.00	60.00	180	0	0	180	
515+00 to 575+00	60.00	0.00	0.00	60.00	180	0	0	180	
575+00 to 635+00	60.00	0.00	0.00	60.00	180	0	0	180	
635+00 to 695+00	60.00	0.00	0.00	60.00	180	0	0	180	
695+00 to 755+00	60.00	0.00	0.00	60.00	180	0	0	180	
755+00 to 815+00	60.00	0.00	0.00	60.00	180	0	0	180	
815+00 to 875+00	60.00	0.00	0.00	60.00	180	0	0	180	
875+00 to 935+00	60.00	0.00	0.00	60.00	180	0	0	180	
935+00 to 995+00	60.00	0.00	0.00	60.00	180	0	0	180	
<b>Total</b>	<b>542.0</b>	<b>0.00</b>	<b>0.00</b>	<b>542.0</b>	<b>1626</b>	<b>0</b>	<b>0</b>	<b>1626</b>	

STATE OF ILLINOIS  
DEPARTMENT OF PUBLIC WORKS  
DIVISION OF HIGHWAYS  
CHADWICK, ILL. 62426  
DATE: Feb. 1, 1968  
BY: [Signature]  
CHECKED: [Signature]  
APPROVED: [Signature]