

STATE OF ILLINOIS
DEPARTMENT OF PUBLIC WORKS AND BUILDINGS
DIVISION OF HIGHWAYS
PLANS FOR PROPOSED
STATE BOND ISSUE HIGHWAY

WORK SHEET ROUTE NO.	SEC.	COUNTY	TOTAL SHEETS	SHEET NO.
SBI 40	5 BR-3	CARROLL	16	1

INDEX OF SHEETS

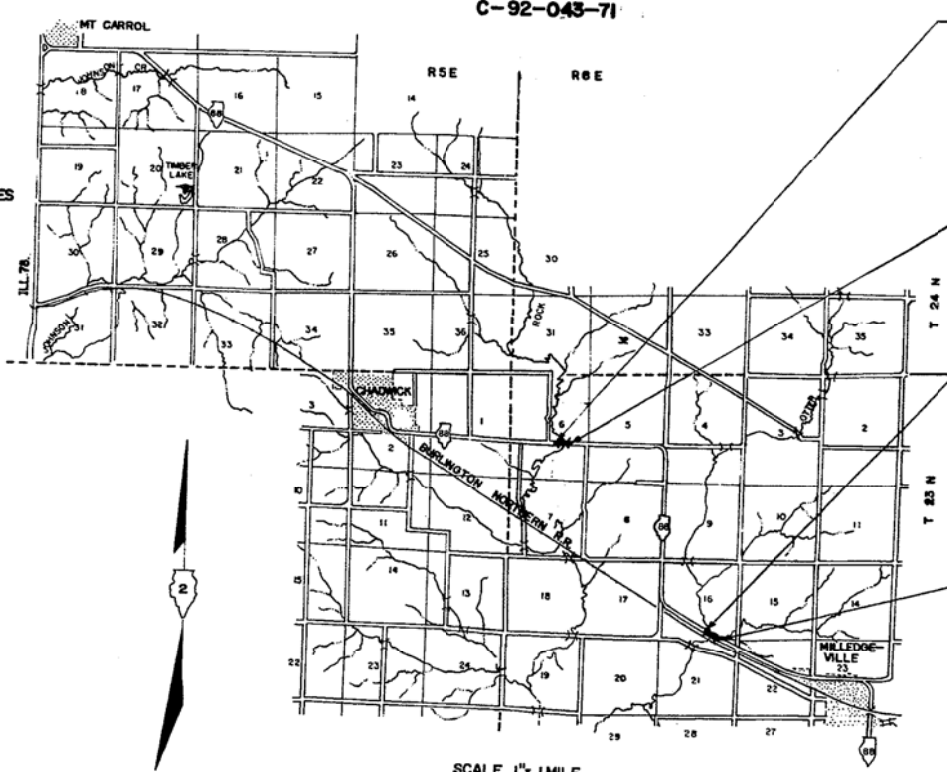
1. COVER SHEET & INDEX OF SHEETS
2. SUMMARY OF QUANTITIES, GENERAL NOTES, SCHEDULE OF QUANTITIES, & TYPICAL SECTION
3. GENERAL PLAN & ELEVATION - STRUCTURE STA. 544+77
4. SUPERSTRUCTURE DETAILS
5. DECK BEAM DETAILS
6. APPROACH DETAILS
7. TYPE W STEEL RAILING
8. ABUTMENTS
9. PIER
10. PILE DETAILS
11. GENERAL PLAN & ELEVATION - STRUCTURE STA. 681+74
12. SUPERSTRUCTURE DETAILS
13. DECK BEAM DETAILS
14. APPROACH DETAILS
15. TYPE W STEEL RAILING
16. ABUTMENTS

- STANDARDS**
- 2113-1 NAME PLATE FOR BRIDGE
 - 2115-3 PAVEMENT FABRIC
 - 2230-7 STEEL PLATE BEAM GUARD RAIL
 - 2231-3 TYPICAL APPLICATION OF STEEL PLATE BEAM GUARD RAIL
 - 2239-4 WIDENING & SHOULDERS FOR PAVEMENT RESURFACING
 - 2298-2 APPLICATION OF TRAFFIC CONTROL DEVICES
 - 2299-1 DESIGN OF TRAFFIC CONTROL DEVICES
 - 2300 FLAGMAN TRAFFIC CONTROL SIGN
 - 2302-1 APPLICATION OF TRAFFIC CONTROL DEVICES
 - 2303-2 " " " " " "
 - 2305-1 " " " " " "
 - 2306-2 " " " " " "
 - 2307-2 " " " " " "
 - 2309-1 " " " " " "

SCALES

- PLAN 1 INCH = 100 FT.
- PROFILE, HOR. 1 INCH = 100 FT.
- PROFILE, VERT. 1 INCH = 10 FT.
- CROSS-SECTIONS 1 INCH = 8 FT.

S.B.I. ROUTE 40
SECTION 5BR & 5BR-1
CARROLL COUNTY



SECTION 5BR
BEGINS STA. 543+34
SECTION 5BR
INCLUDES The Reconstruction of the Superstructure and Portions of the Substructure of the Bridge Carrying SBI Route 40 (LL 88) over ROCK Creek; Spans 2 @ 42'-11" at STA. 544+77 and all other Work Necessary to Complete the Section.

SECTION 5BR
ENDS STA. 546+20

SECTION 5BR-1
BEGINS STA. 680+42.5
SECTION 5BR-1
INCLUDES The Reconstruction of the Superstructure and Portions of the Substructure of the Bridge Carrying SBI Route 40 (LL 88) over OTTER Creek; 2 @ 31'-4 7/8" at STA. 681+74 and all other Work Necessary to Complete the Section.

SECTION 5BR-1
ENDS STA. 683+05.5

SCALE 1" = 1 MILE

NET LENGTH OF SEC. 5BR = 286.0 LIN. FT. = 0.054 MILES
NET LENGTH OF SEC. 5BR-1 = 263.0 LIN. FT. = 0.050 MILES
GROSS LENGTH OF SECTION = 549.0 LIN. FT. = 0.104 MILES



STATE OF ILLINOIS
DEPARTMENT OF PUBLIC WORKS AND BUILDINGS
DIVISION OF HIGHWAYS

SUBMITTED: Nov 14 1971

DESIGNED BY: D. E. Sams

DRAWN BY: W. J. D. [Signature]

CHECKED BY: W. J. D. [Signature]

APPROVED BY: [Signature]

APPROVED BY: [Signature]

CONTRACT

CARROLL COUNTY SECTION 5BR & 5BR-1S. B. I. ROUTE 40