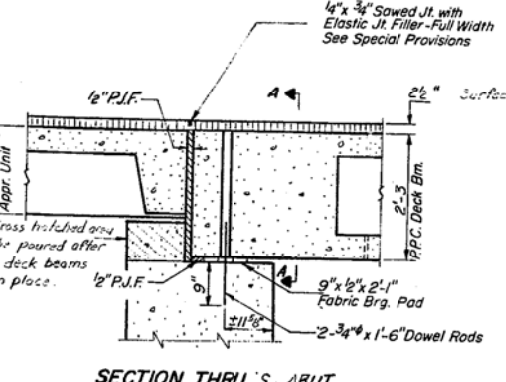
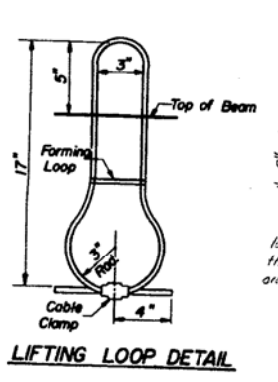
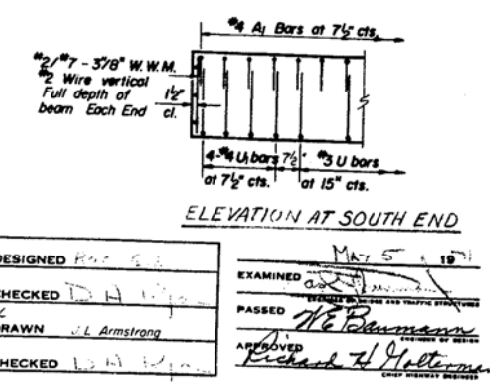
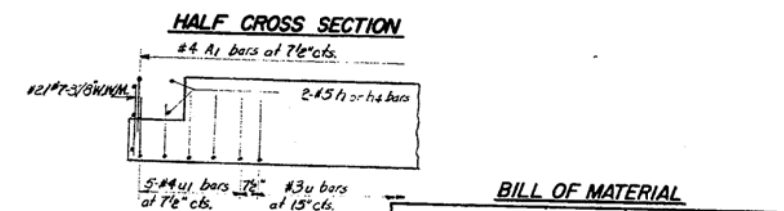
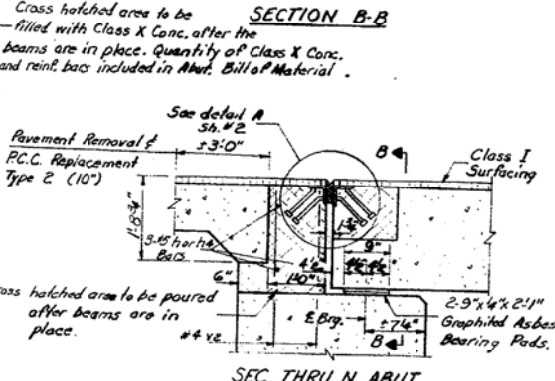
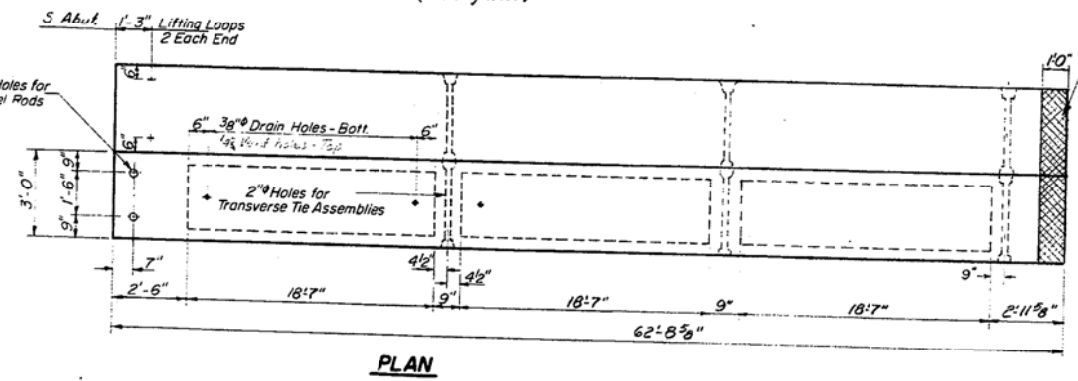
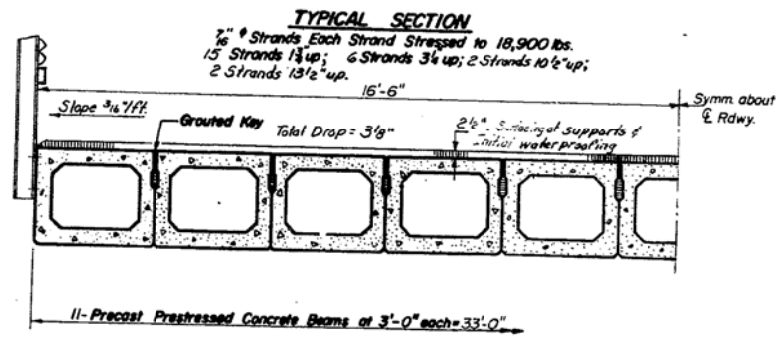
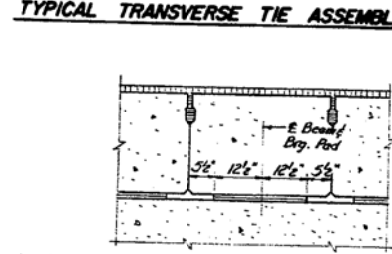
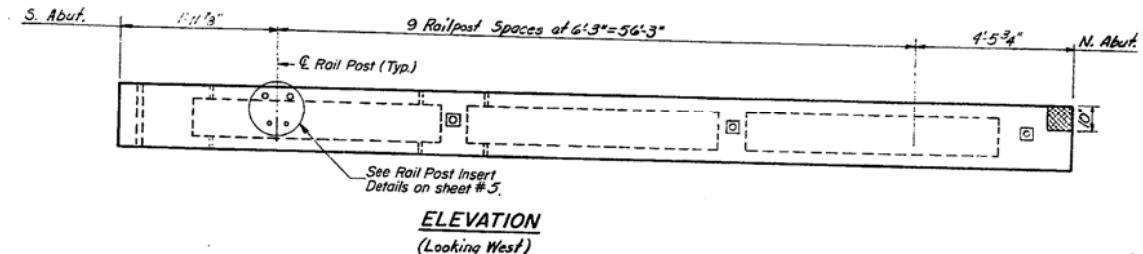
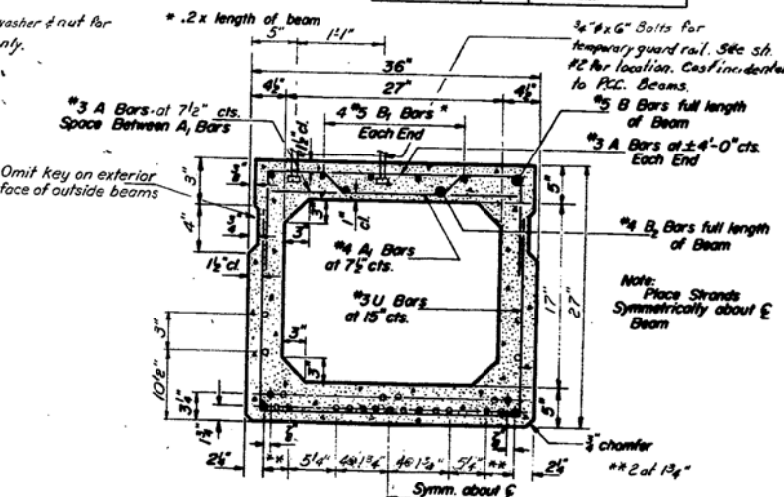
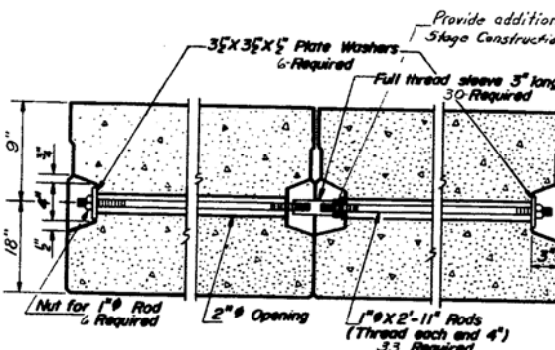
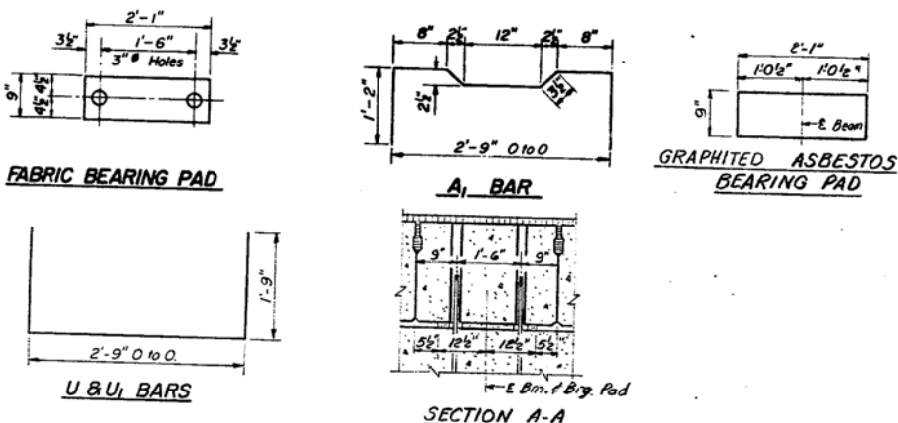


STATE OF ILLINOIS
DEPARTMENT OF PUBLIC WORKS & BUILDINGS
DIVISION OF HIGHWAYS

ROUTE NO.	SECTION	COUNTY	TOTAL SHEETS	SHEET NO.
40	5BR-1	CARROLL	15	6
SHEET NO. 3 6 SHEETS				



GENERAL NOTES

Prestressing steel shall be non-galvanized high strength, stress-relieved 7-wire strand. The nominal diameter shall be 7/16" and the nominal cross-sectional area shall be 0.109 sq. in.. Lifting loops shall be 3/4" diameter, 6x19 class wire rope with fiber core and shall have a minimum ultimate tensile strength of 44,000 lbs.

The 1" rods in the transverse tie assembly shall be tightened to a snug fit and the threads set. Pockets that receive transverse tie bar on outside beam shall be filled with grout after transverse tie assembly is in place.

Longitudinal shear keys shall be packed with a very dry mix of 2-1 sand and P.C. mortar. After beams have been erected, holes for dowel anchors shall be drilled into sub-structure. Grout dowels at fixed end. At expansion end grout dowels into sub-structure & fill holes in beam with P.A.F.-4.

After fabrication the transverse tie assemblies (tie rods, nuts, washers and sleeves) shall be hot-dipped galvanized in accordance with A.S.T.M. Designation: A553.

Cost of reinforcement and accessories cast into the beam, of bearing pads, and of grouting longitudinal shear keys is included in unit price bid for "Precast Prestressed Concrete Deck Beams."

Steel for dowel rods shall be ASTM A-306 or ASTM A-615

Steel for transverse tie rods shall be ASTM A-306, grade 70-80.

BILL OF MATERIAL

Item	Quantity	Unit	Notes
Precast Prestressed Concrete Deck Beams (27')	2070	Sq. Ft.	
Removal of Existing Superstructure No. 2	1	Each	

PD-3-S 11-19-65 Rev. 5-20-68
11-5 27 HPC Deck Bms

P.P.C. DECK BEAMS
S.B.I. RT. 40 SEC. 5BR-1
CARROLL COUNTY
STA. 681+74

FILE NAME = ...N0264084-SHT-Ex-Bridge.dgn

DESIGNED - RAC	REVISIONS
CHECKED - DAZ	REVISIONS
DRAWN - J.L. Armstrong	REVISIONS
CHECKED - J.L. Armstrong	REVISIONS
EXAMINED - M.A.S. 10/19/65	REVISIONS
PASSED - H.E. Blumhagen	REVISIONS
APPROVED - Richard H. Holterman	REVISIONS

STATE OF ILLINOIS
DEPARTMENT OF TRANSPORTATION

ZROKA Engineering, P.C.
4216 North Hermitage
Chicago, IL 60613

EXISTING BRIDGE PLANS
FOR INFORMATION ONLY

F.A.P. RTE.	SECTION	COUNTY	TOTAL SHEETS	SHEET NO.
646	5 BR-3	CARROLL	84	57
CONTRACT NO. 64DB4				
ILLINOIS FED. AID PROJECT				

SCALE: SHEET 15 OF 28 SHEETS STA. TO STA.