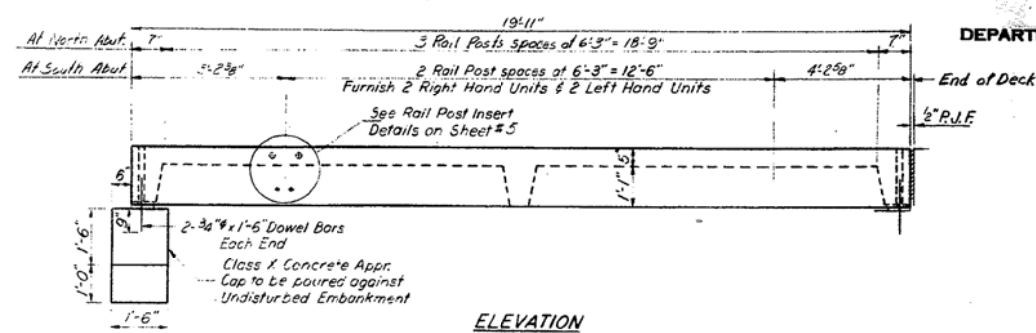
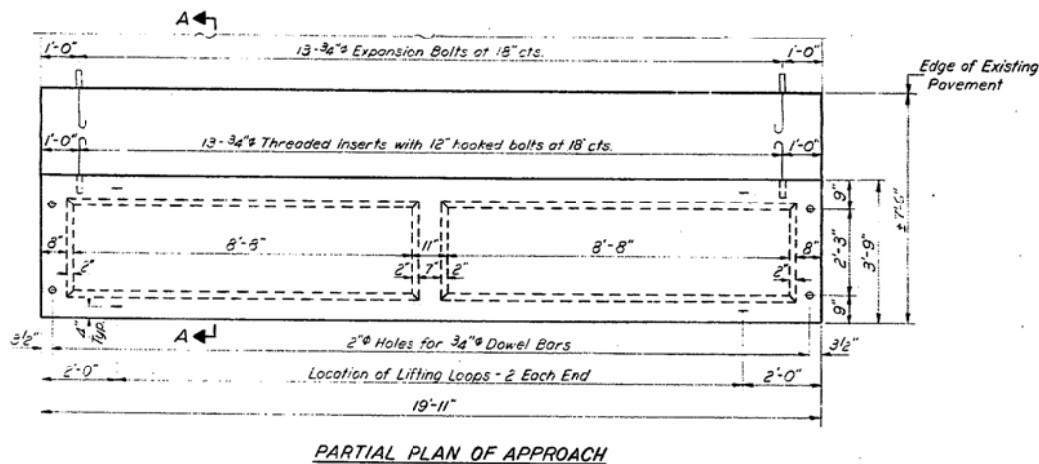
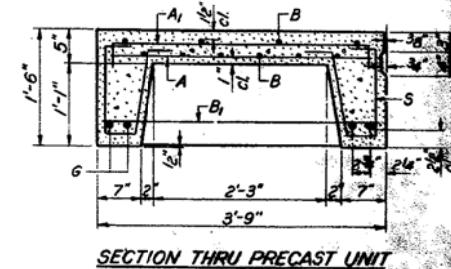
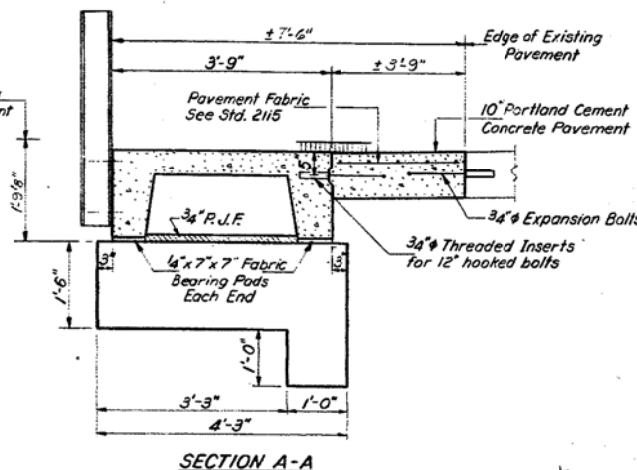


STATE OF ILLINOIS  
DEPARTMENT OF PUBLIC WORKS & BUILDINGS  
DIVISION OF HIGHWAYS

PROJECT NO.	SECTION	COUNTY	TOTAL SHEETS	SHEET NO.	SHEET NO.
40	5BR-1	CARROLL	16	14	6 SHEETS

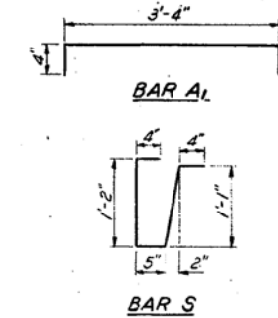


Grade Line Elev. of Rwy Top of exist. conc. pavement



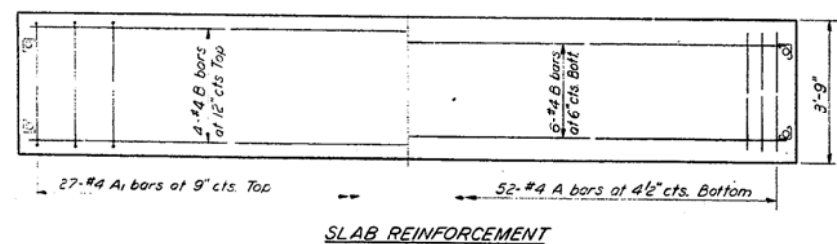
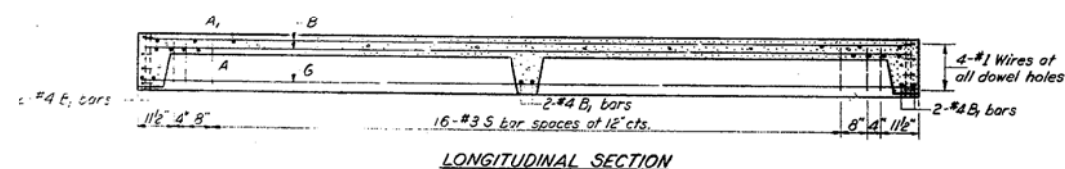
**BAR LIST - ONE UNIT**

Bar	No	Size	Length	Shape
A	52	#4	3'-3"	
A <sub>1</sub>	27	#4	4'-0"	
B	10	#4	19'-6"	
B <sub>1</sub>	6	#4	3'-6"	
G	4	#10	19'-6"	
S	42	#3	3'-4"	U

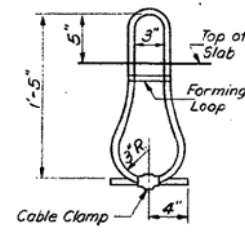


**NOTES**

Unless otherwise approved by the Engineer, lifting loops shall be 1/2" 6 x 19 class wire rope with fiber core and shall have a minimum ultimate strength of 15,700 lbs. Loops shall be burned off after slab has been erected. Holes shall be drilled and anchor dowels grouted in place. Cost of reinforcement and accessories cast into the slab unit, bearing pads, furnishing, drilling for, placing and grouting anchor dowels and 3/4" hooked bolts is included in Unit bid price for "Precast Concrete Bridge Slab." The Precast Concrete Bridge Slab shall be erected and aligned with the exterior face of the exterior Deck Beam after Deck Beams are in final position.



DESIGNED	EXAMINED
CHECKED	PASSED
DRAWN	APPROVED
CHECKED	



**STRESSES**

f<sub>c</sub> = 4,500 psi.  
f<sub>c</sub> = 1,800 psi.  
f<sub>s</sub> = 20,000 psi.  
n = 8  
**LOADING HS-20**

**TWO APPROACHES  
BILL OF MATERIAL**

Item	Unit	Quantity
Precast Concrete Bridge Slab	Sq. Ft.	299
Portland Cement Concrete Pavement (10")	Sq. Yds.	33.2
Pavement Fabric	Sq. Yds.	33.2
Expansion Bolts 3/4"	Each	52
Class X Concrete	Cu. Yds.	1.6

**APPROACH DETAILS**  
SBI. RT. 40 SEC. 5 BR-1  
CARROLL COUNTY  
STA. 681 + 74